



## Director's Update Brief

Friday

22 May 2009 1100 EDT  
Day 34

Day of Surveillance Transition (Next Iteration)



## Key Events

### Novel Influenza A (H1N1) - 22 May 2009 1100 EDT



- Novel Influenza A (H1N1) Declarations
  - HHS: Downgraded to Phase 1 – Awareness (9 May 2009)
  - WHO: Pandemic Phase 5 (29 Apr 1600 EDT)
  - USG: Public Health Emergency declared (26 Apr 2009)

- US Cases:

As of 21 May 2009 0800 EDT	Total Confirmed and Probable		
	Cases	Hosp	Deaths
US TOTAL Cases INCL DC	<b>6552</b>	<b>302</b>	<b>9</b>
US TOTAL States Affected INCL DC	<b>48</b>	<b>35</b>	<b>6</b>

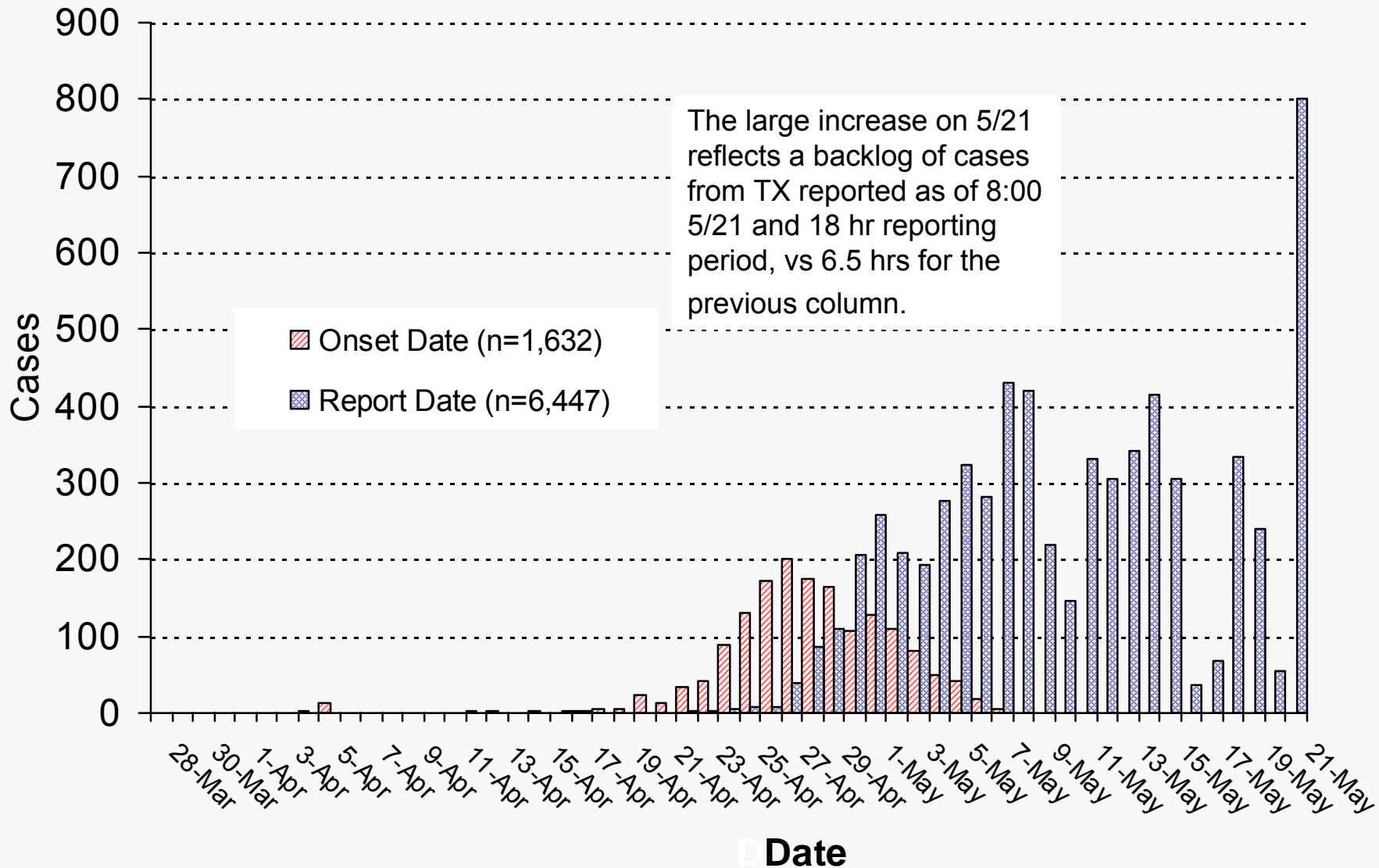
- International Cases: 11,168 in 42 Countries
  - New countries with confirmed cases: Philippines
- Deployments: 51 deployed, 4 pending, 205 potential
- School Dismissals: 60 schools closed
  - 8 states: AZ, MA, MI, NJ, NV, NY (25), TX, and WI



# Epidemiology/Surveillance

## Novel Influenza A (H1N1) - 22 May 2009 1100 EDT

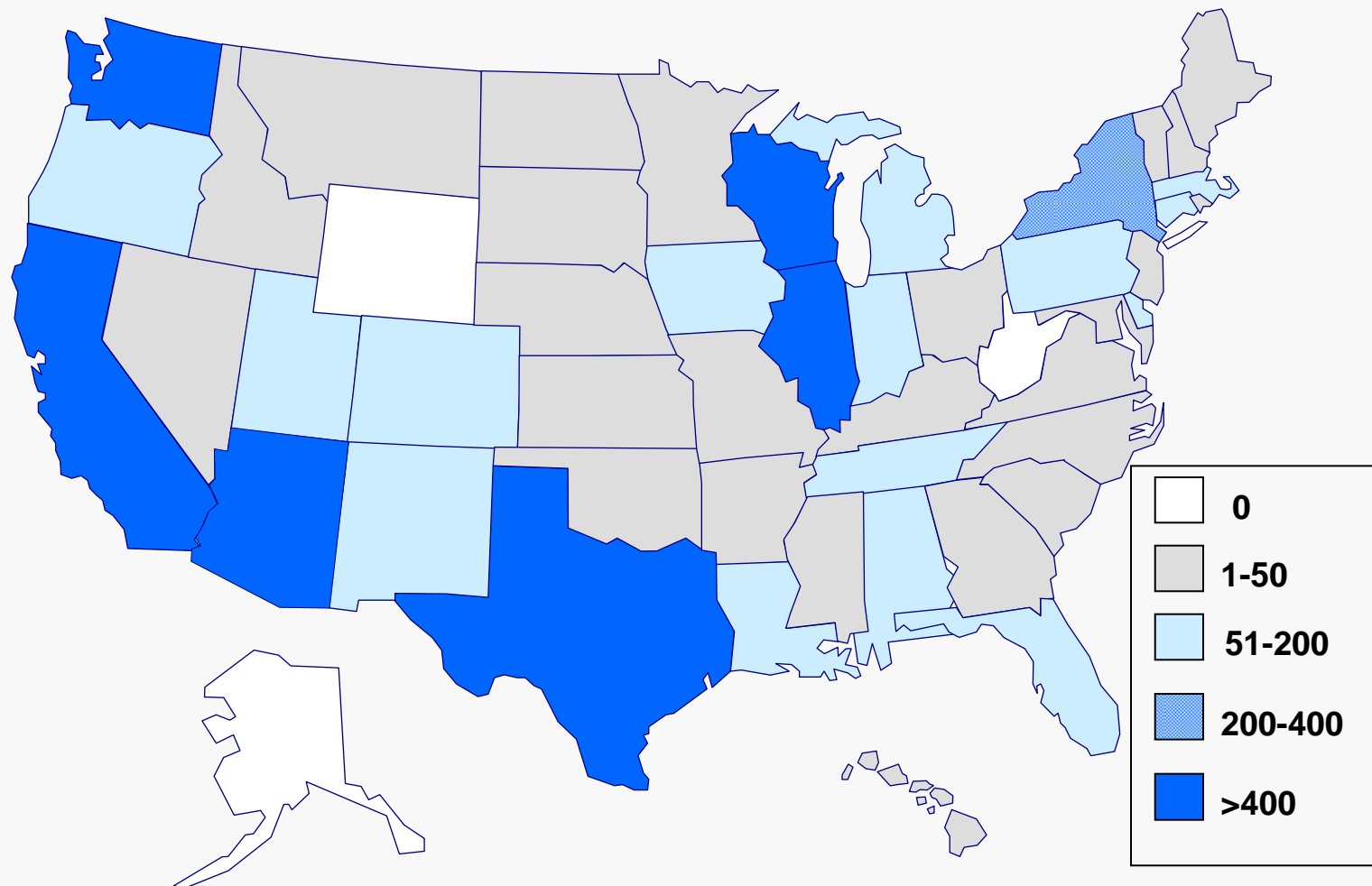
### Confirmed and Probable Cases by Onset\* and Report Date



\*Information on onset date no longer presented after May 12 due to change to aggregate reporting



Epidemiology/Surveillance  
Novel Influenza A (H1N1) - 22 May 2009 1100 EDT  
Number of cases of H1N1 reported to CDC by state  
(n=6,552)

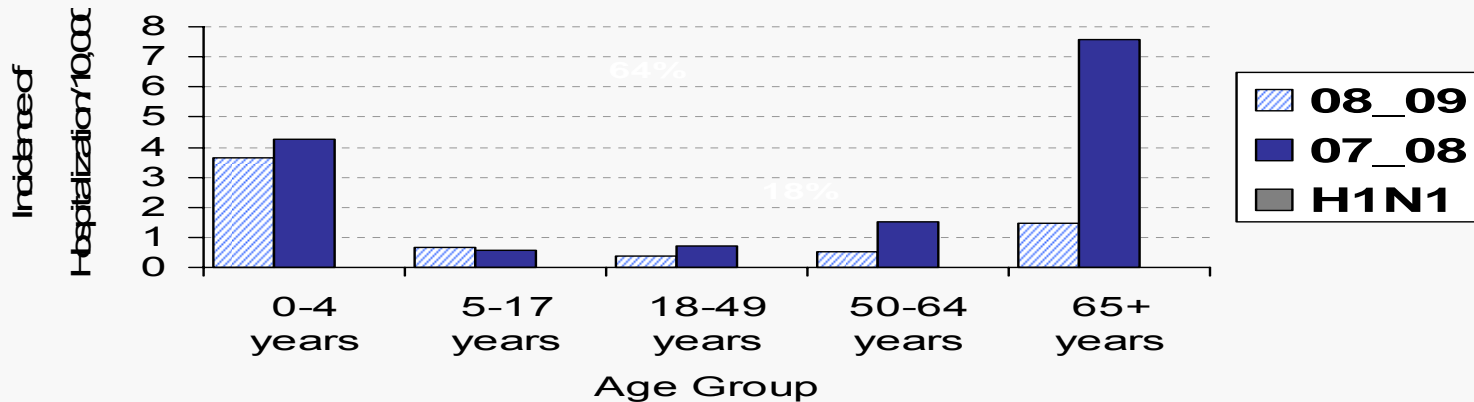




Epidemiology/Surveillance  
Novel Influenza A (H1N1) - 22 May 2009 1100 EDT  
Laboratory Confirmed Influenza Hospitalization Rates by Age



### Seasonal Influenza, EIP sites



### H1N1, United States





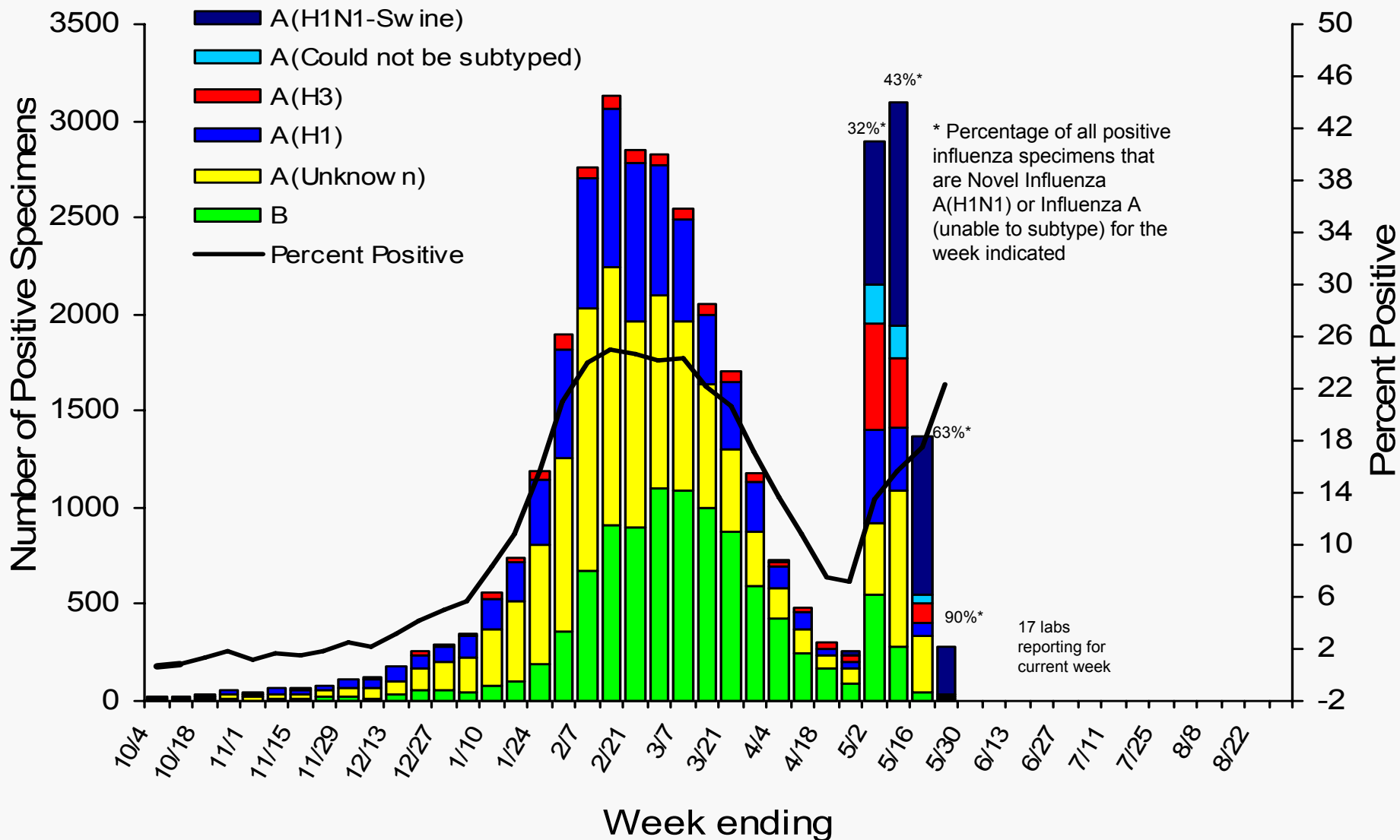
- ***WHO/NREVSS Collaborating Laboratories***
  - Seasonal influenza A (H1), A (H3), and B viruses co-circulated with novel influenza A (H1N1) viruses
- ***Influenza-associated Pediatric Deaths***
  - No new influenza-associated pediatric deaths reported. 08-09 total = 61
- ***ILINet (week ending 16 May)***
  - % of ILI outpatient visits ↓ the national baseline; overall trend remains stable
- ***122 Cities Mortality Reporting System (graph)***
  - % pneumonia and influenza deaths remains within expected
  - % deaths due to pneumonia and influenza are decreasing
- ***Geographic Spread of Influenza as Assessed by State and Territorial Epidemiologists – state reporting:***
  - Widespread: 5 states      Regional: 13 states
  - Local: 15 states + DC      Sporadic: 16 states      None: 1 state



# Epidemiology/Surveillance

## Novel Influenza A (H1N1) - 22 May 2009 1100 EDT

### U.S. WHO/NREVSS Collaborating Laboratories Summary, 2008-09



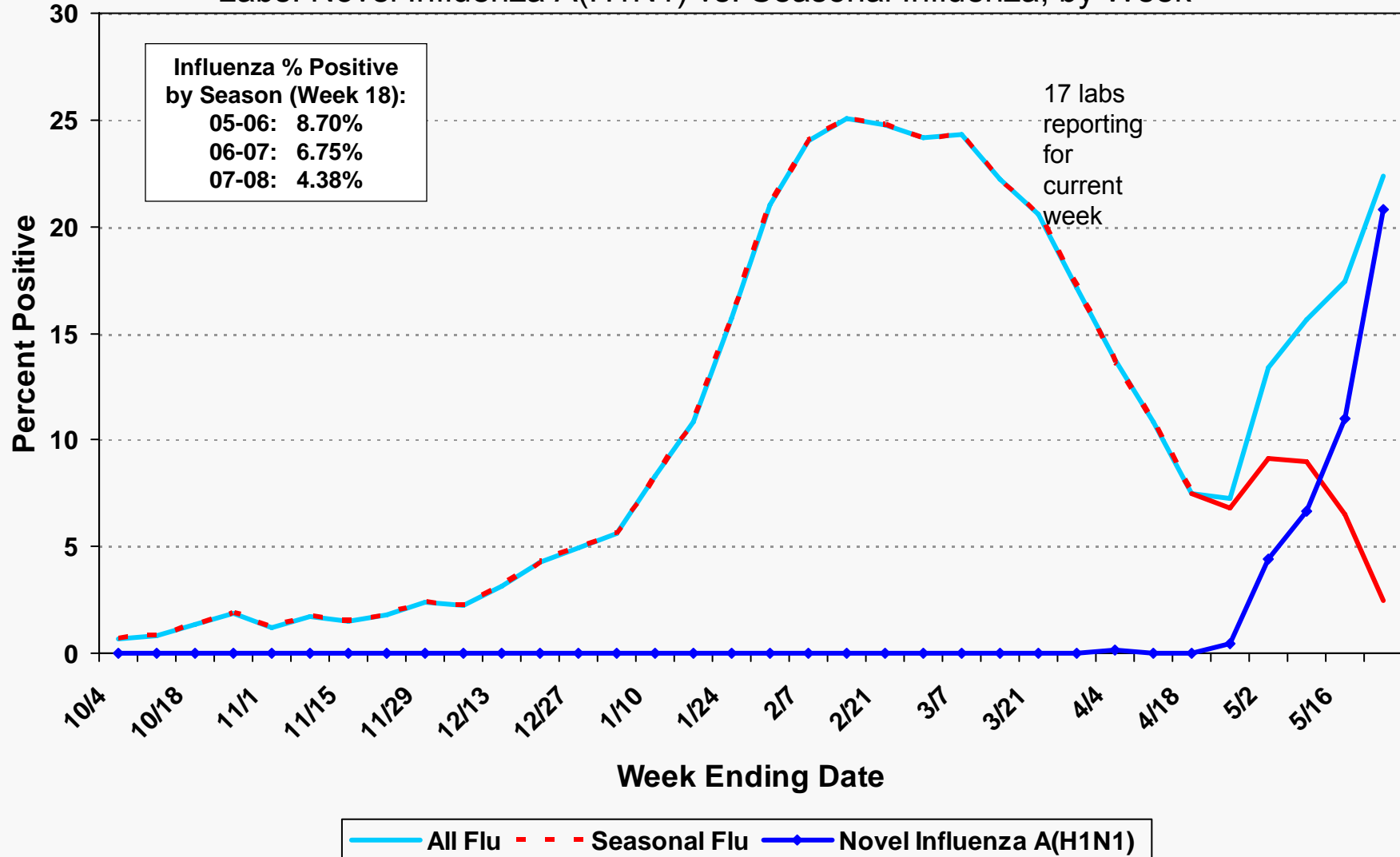


## Epidemiology/Surveillance

Novel Influenza A (H1N1) - 22 May 2009 1100 EDT

Percent of Specimens Positive for Influenza Reported by WHO and NREVSS

Labs: Novel Influenza A(H1N1) vs. Seasonal Influenza, by Week



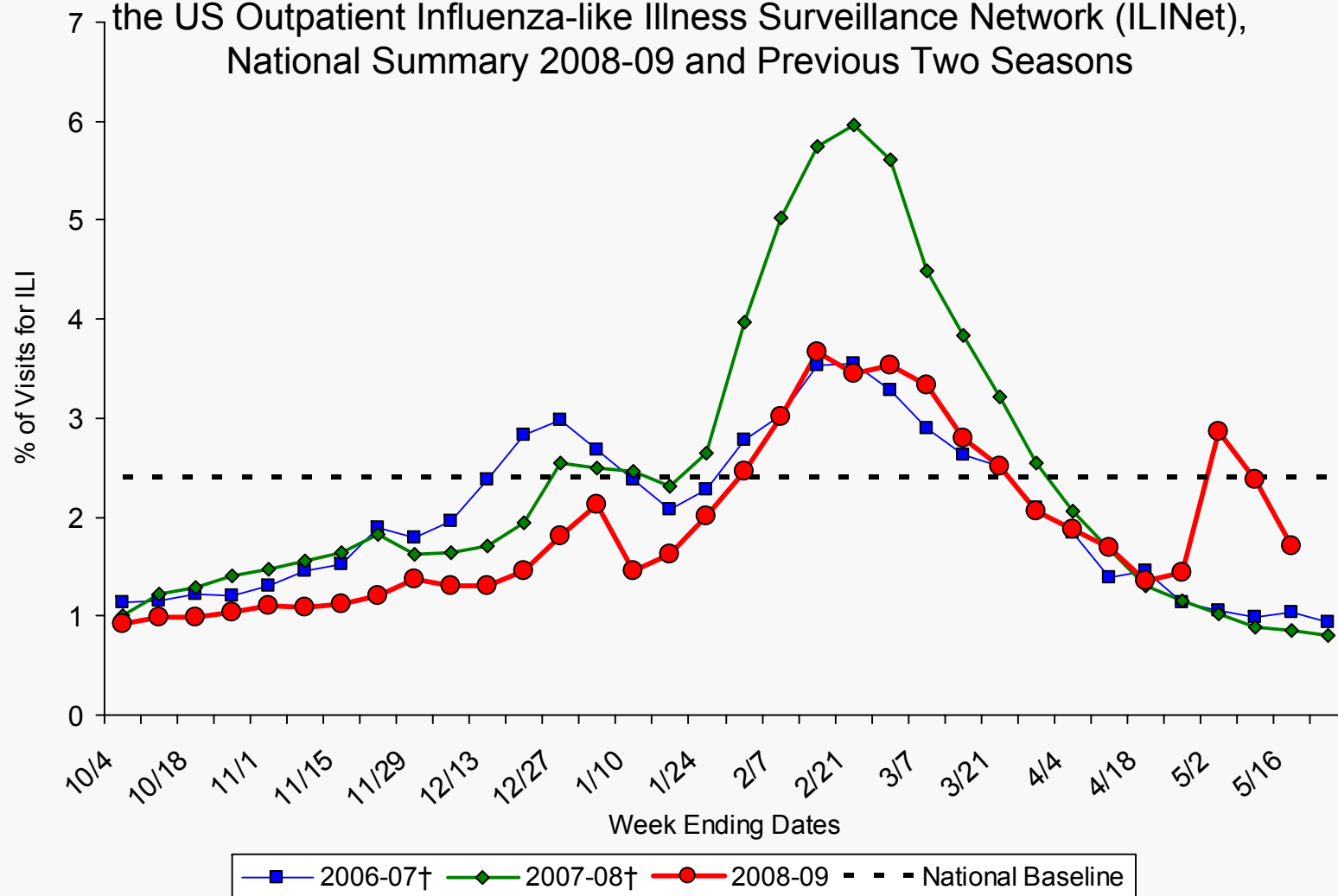




# Epidemiology/Surveillance

## Novel Influenza A (H1N1) - 22 May 2009 1100 EDT

### Percentage of Visits for Influenza-like Illness (ILI) Reported by the US Outpatient Influenza-like Illness Surveillance Network (ILINet), National Summary 2008-09 and Previous Two Seasons



**NOTE: Week ending dates vary by influenza season**

**\*Preliminary ILI data for week 19, as of May 21, 2009 (n=915 weekly ILI reports received from 49 states)**

† There was no week 53 during the 2006-07 and 2007-08 seasons, therefore the week 53 data point for those seasons is an average of weeks 52 and 1.

**Internal Use Only (FIUO)---For Official Use Only (FOUO) NOT FOR FURTHER DISTRIBUTION -Sensitive But Unclassified (SBU)**

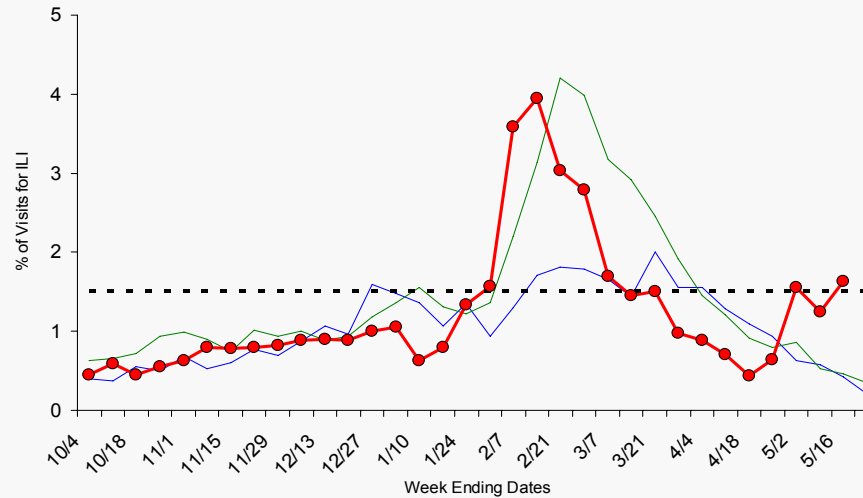


# Epidemiology/Surveillance

## Novel Influenza A (H1N1) - 22 May 2009 1100 EDT

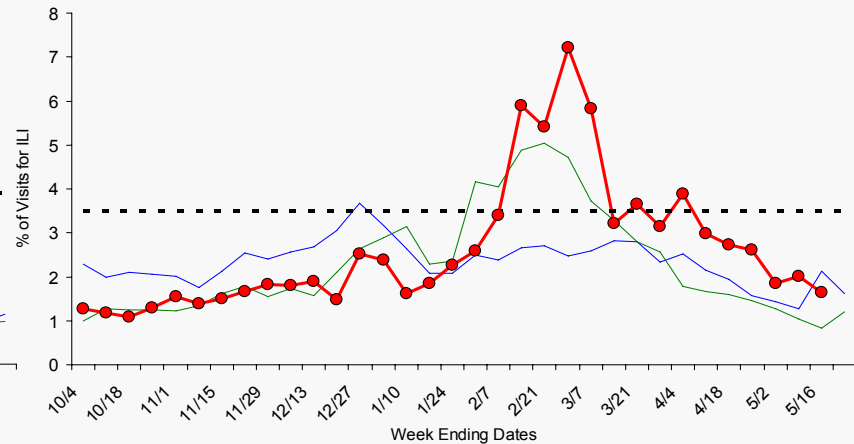
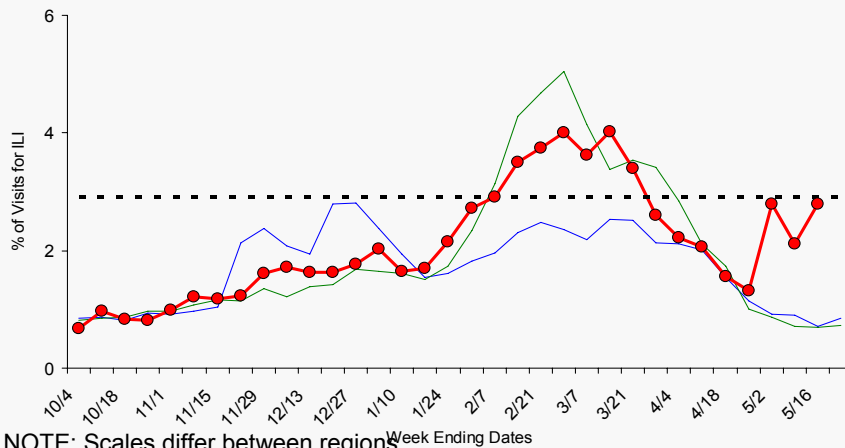
### Current Influenza Surveillance – ILINet Regions I-III

Region I - CT, ME, MA, NH, RI, VT



Region II - NJ, NY

Region III - DE, DC, MD, PA, VA, WV



NOTE: Scales differ between regions

NOTE: There was no week 53 during the 2006-07 and 2007-08 seasons, therefore the week 53 data point for those seasons is an average of weeks 52 and 1.



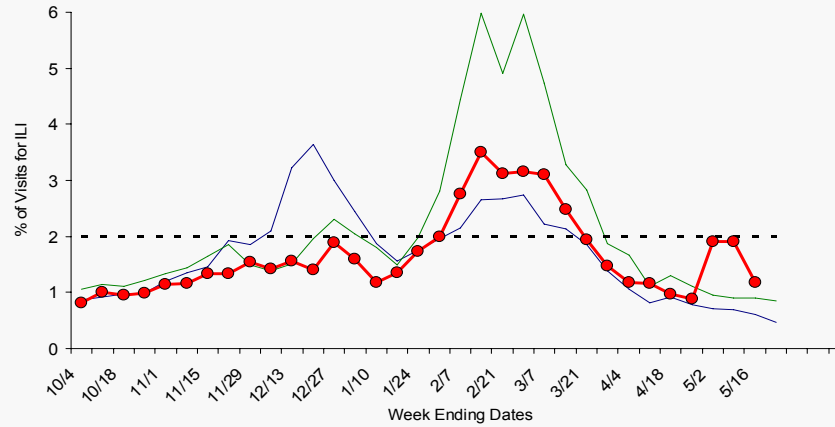
# Epidemiology/Surveillance

## Novel Influenza A (H1N1) - 22 May 2009 1100 EDT

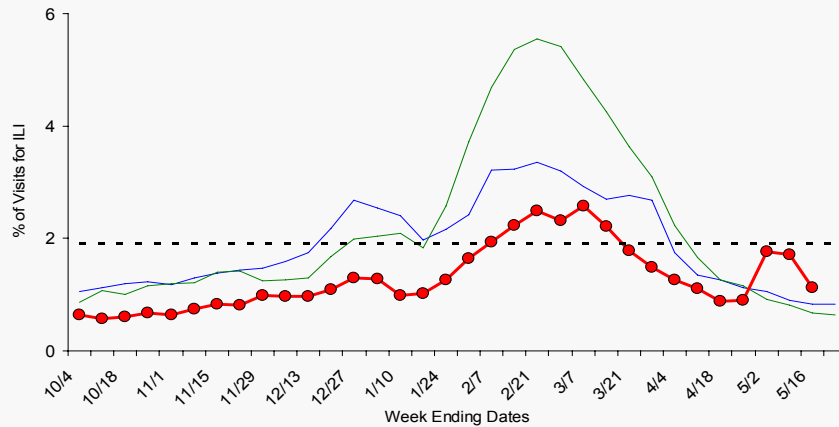
### Current Influenza Surveillance – ILINet Regions IV-VI



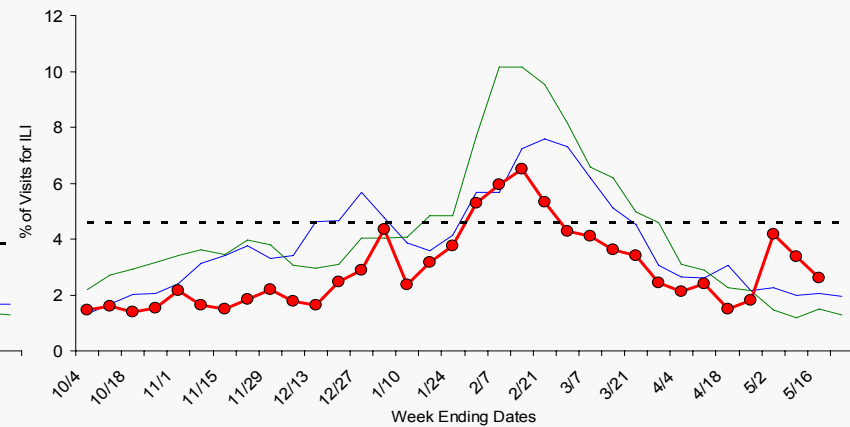
Region IV - AL, FL, GA, KY, MS, NC, SC, TN



Region V - IL, IN, MI, MN, OH, WI



Region VI - AR, LA, NM, OK, TX



NOTE: Scales differ between regions

NOTE: There was no week 53 during the 2006-07 and 2007-08 seasons, therefore the week 53 data point for those seasons is an average of weeks 52 and 1.



# Epidemiology/Surveillance

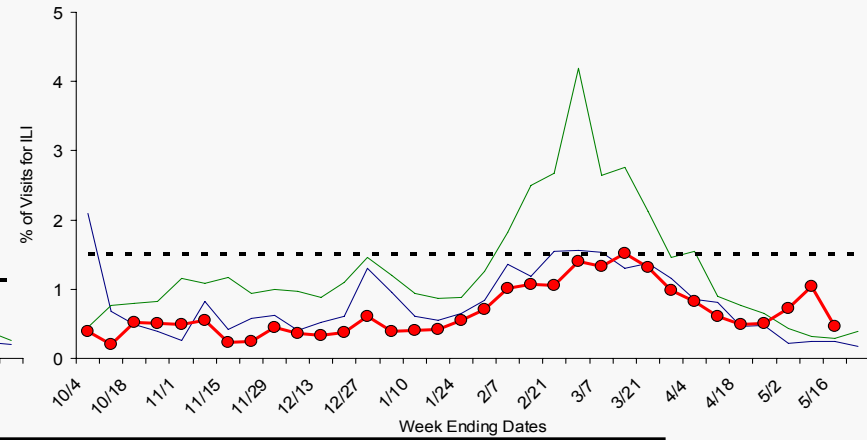
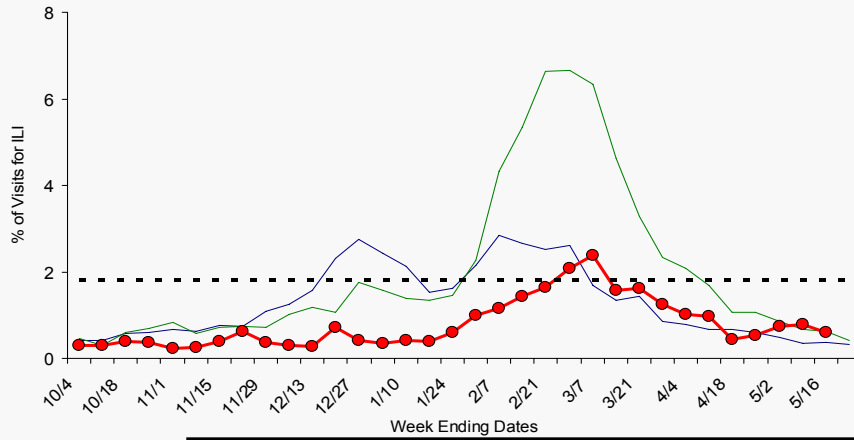
## Novel Influenza A (H1N1) - 22 May 2009 1100 EDT

### Current Influenza Surveillance – ILINet Regions VII-X



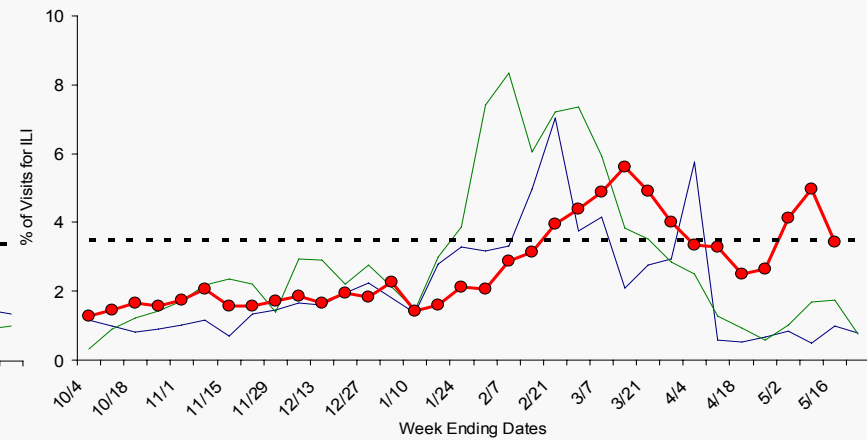
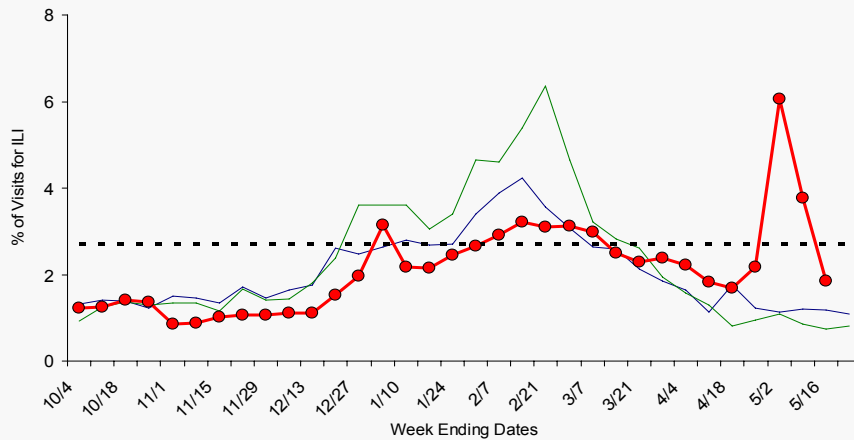
Region VII - IA, KS, MO, NE

Region VIII - CO, MT, ND, SD, UT, WY



Region IX - AZ, CA, HI, NV

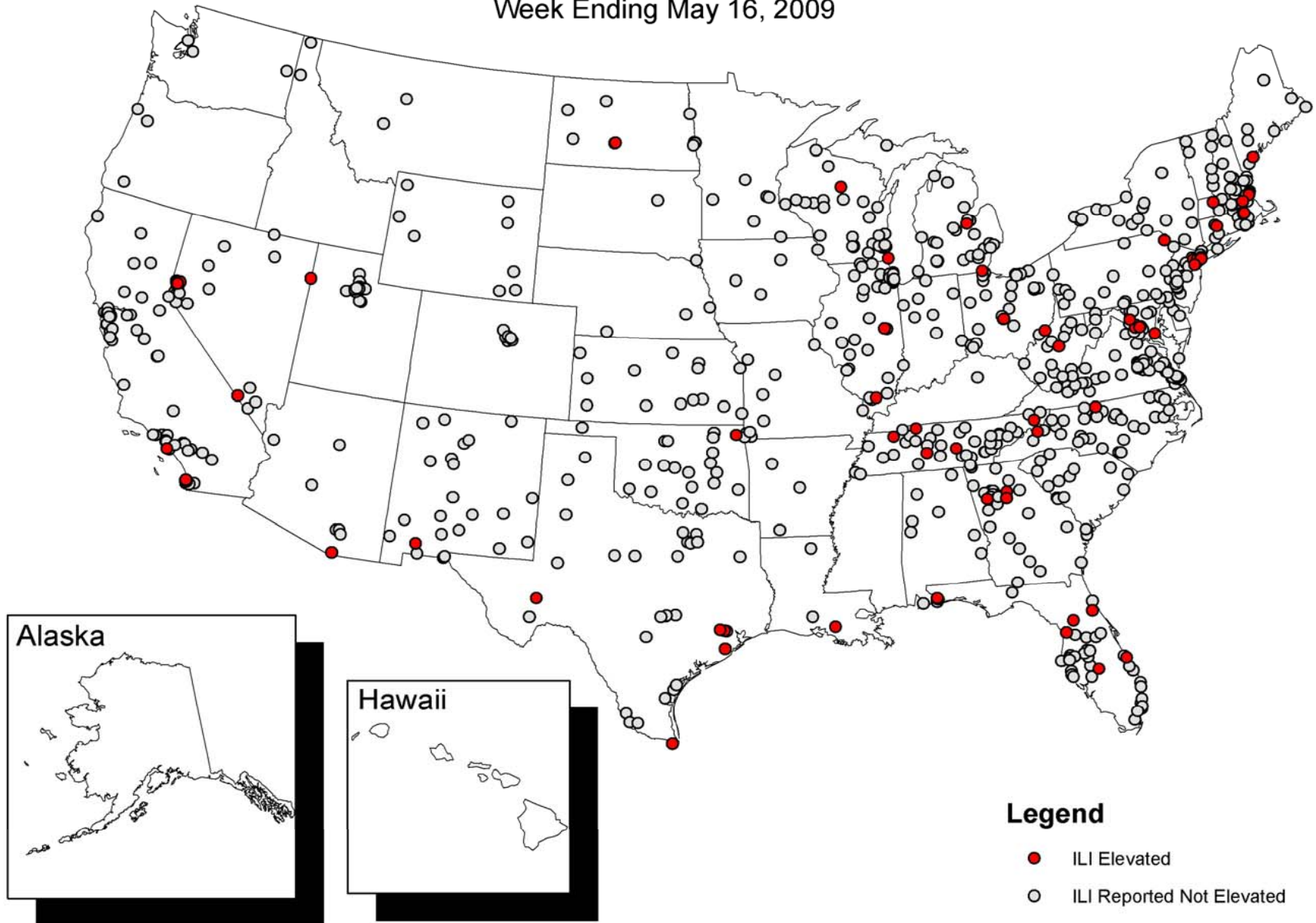
Region X - AK, ID, OR, WA



NOTE: Scales differ between regions

NOTE: There was no week 53 during the 2006-07 and 2007-08 seasons, therefore the week 53 data point for those seasons is an average of weeks 52 and 1.

Influenza-like Illness (ILI) Reported from U.S. Outpatient Influenza-like Illness  
Surveillance Network (ILINet)  
Analyzed by the Early Aberration Reporting System (EARS)  
Week Ending May 16, 2009





International  
Novel Influenza A (H1N1) - 22 May 2009

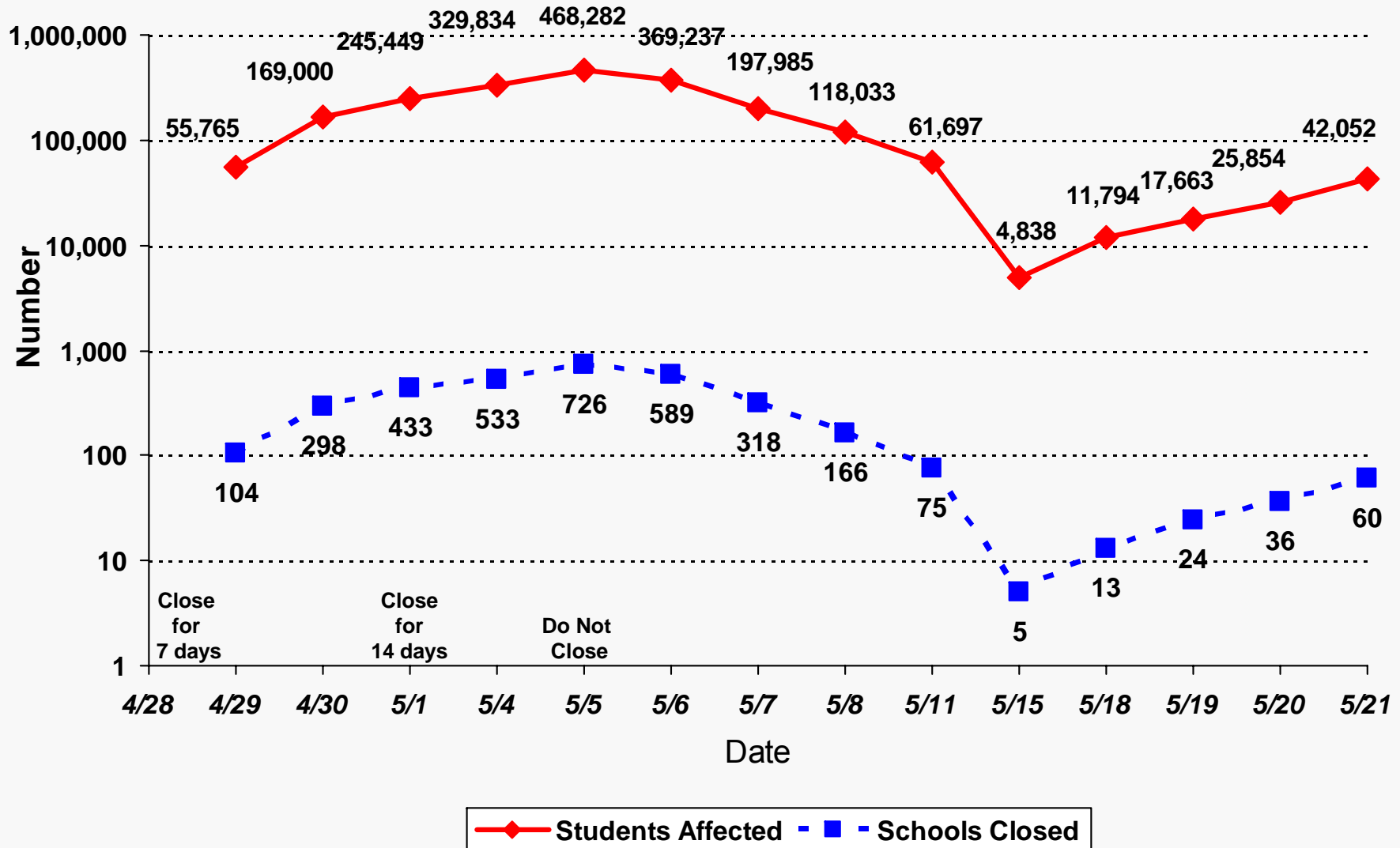


- WHO global case count: 11,168 confirmed cases in 42 countries\*
  - New countries with confirmed cases: Philippines
  - Countries with highest confirmed case count after the US and Mexico:
    - Canada: 719 (↑223: 44% increase in last 48 hours )
    - Japan: 294 (↑84: 40% increase in last 48 hours )
    - Spain: 113 (↑6)
    - UK: 112 (↑10)

*\*Note: WHO case counts are current as of 05/22/09, 6:00 am EDT*



Division of Global Migration and Quarantine  
Novel Influenza A (H1N1) - 22 May 2009  
School Dismissal, United States, 4/29 – 5/21, 2009



Source: ED and CDC Confirmed School Closing Reports released each weekday at 2:00pm.



## Communications Summary Novel Influenza A (H1N1) - 22 May 2009



Channel Traffic	5/17-18 Sun-Mon	5/18-19 Mon-Tue	5/19-20 Tue-Wed	5/20-5/21 Thu-Fri
Public Inquiries	178	510	458	414 (-10%)
Internet/Print News	212	189	202	172 (-15%)
Web	547,371	1,216,785	1,044,297	870,809 (-17%)

- **National and local television (Fewer and generally very brief stories)**
  - Deaths in AZ and UT push U.S. death toll into “double digits”
  - Concerns about school closings –making up lost days
  - People over 60 may have developed greater immunity to H1N1
- **Print/Internet**
  - Mexico City ends swine flu alert, no cases in week
  - Scientists investigate Mexican town's flu mystery
- **Emerging Themes**
  - As Flu Suspicions Spread, Value of Test Is Weighed:
  - NYC--parents asking for “rapid” swine flu test — CDC says no
  - CDC--Swine flu outbreak may be subsiding
  - Health officials didn't act fast enough to close down and sanitize schools