

CAMP GRUBER CANTONMENT AREA AND RANGE LOOP AREA ROAD

TRANSPORTATION

- Primary
- Secondary
- Tertiary
- Unimproved
- Active Multi-Track
- Active
- Abandoned

MISCELLANEOUS

- Forest
- Open Woodland
- Building
- Wastewater Drainfield
- Lagoon
- Utility Water Reservoir
- Recreation Area
- Utility Line (Primary)
- Utility Line (Other)
- Utility Water Tank

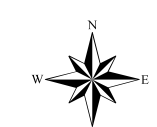
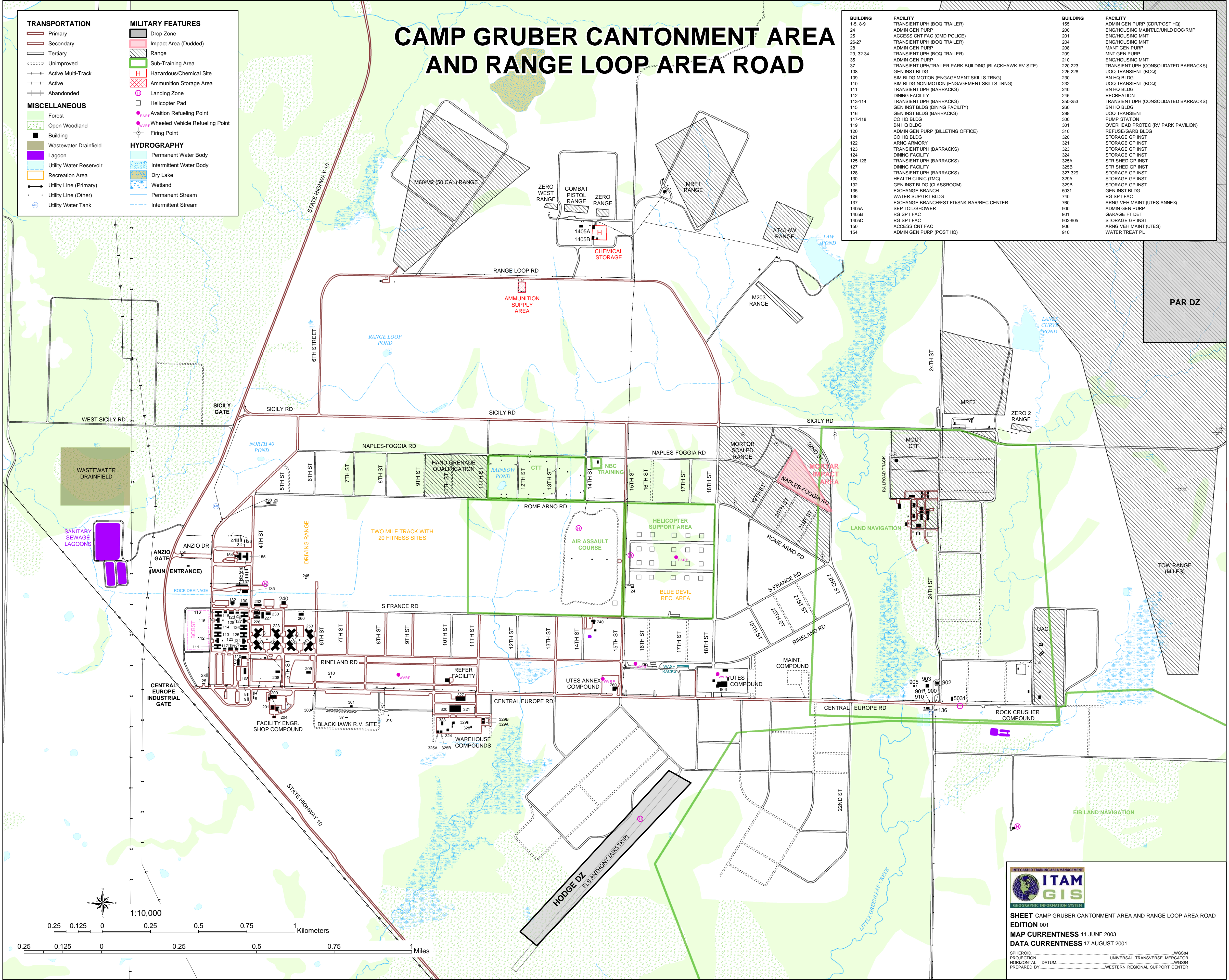
MILITARY FEATURES

- Drop Zone
- Impact Area (Dudded)
- Range
- Sub-Training Area
- Hazardous/Chemical Site
- Ammunition Storage Area
- Landing Zone
- Helicopter Pad
- Aviation Refueling Point
- Wheeled Vehicle Refueling Point
- Firing Point

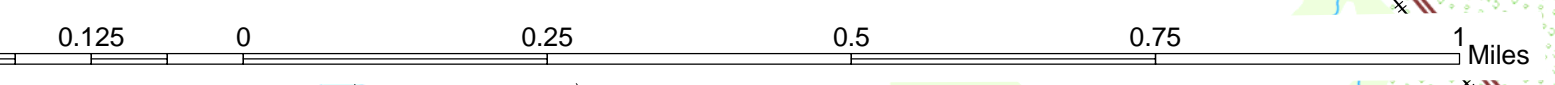
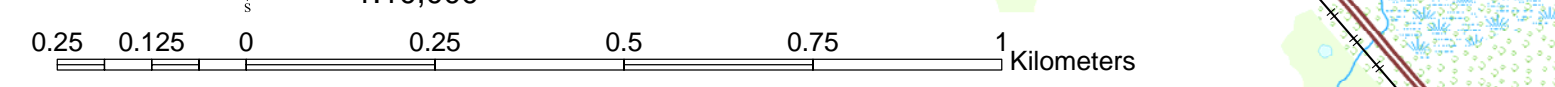
HYDROGRAPHY

- Permanent Water Body
- Intermittent Water Body
- Dry Lake
- Wetland
- Permanent Stream
- Intermittent Stream

BUILDING	FACILITY	BUILDING	FACILITY
1-5, 8-9	TRANSIENT UPH (BOQ TRAILER)	155	ADMIN GEN PURP (CDR/POST HQ)
24	ADMIN GEN PURP	200	ENH HOUSING MAINT/LD UNLD DOC/RMP
25	ACCESS CNT FAC (O/M POLICE)	201	ENH HOUSING MNT
26-27	TRANSIENT UPH (BOQ TRAILER)	204	ENH HOUSING MNT
28	ADMIN GEN PURP	208	MANT GEN PURP
29, 32-34	TRANSIENT UPH (BOQ TRAILER)	209	MNT GEN PURP
35	ADMIN GEN PURP	210	ENH HOUSING MNT
37	TRANSIENT UPH/TRAILER PARK BUILDING (BLACKHAWK RV SITE)	220-223	TRANSIENT UPH (CONSOLIDATED BARRACKS)
108	GEN INST BLDG	226-228	UOQ TRANSIENT (BOQ)
109	SIM BLDG MOTION (ENGAGEMENT SKILLS TRNG)	230	BN HQ BLDG
110	SIM BLDG NON-MOTION (ENGAGEMENT SKILLS TRNG)	232	UOQ TRANSIENT (BOQ)
111	TRANSIENT UPH (BARRACKS)	240	BN HQ BLDG
112	DINING FACILITY	245	RECREATION
113-114	TRANSIENT UPH (BARRACKS)	250-253	TRANSIENT UPH (CONSOLIDATED BARRACKS)
115	GEN INST BLDG (DINING FACILITY)	260	BN HQ BLDG
116	GEN INST BLDG (BARRACKS)	298	UOQ TRANSIENT
117-118	CO HQ BLDG	300	PUMP STATION
119	BN HQ BLDG	301	OVERHEAD PROTEC (RV PARK PAVILION)
120	ADMIN GEN PURP (BILLETING OFFICE)	310	REFUSE/GARB BLDG
121	CO HQ BLDG	320	STORAGE GP INST
122	ARMG ARMORY	321	STORAGE GP INST
123	TRANSIENT UPH (BARRACKS)	323	STORAGE GP INST
124	DINING FACILITY	324	STORAGE GP INST
125-126	TRANSIENT UPH (BARRACKS)	325A	STR SHED GP INST
127	DINING FACILITY	325B	STR SHED GP INST
128	TRANSIENT UPH (BARRACKS)	327-329	STORAGE GP INST
130	HEALTH CLINIC (TNG)	329A	STORAGE GP INST
132	GEN INST BLDG (CLASSROOM)	329B	STORAGE GP INST
135	EXCHANGE BRANCH	5031	GEN INST BLDG
136	WATER SUP/TRT BLDG	740	RG SPT FAC
137	EXCHANGE BRANCH/ST FD/SNK BAR/REC CENTER	760	ARMG VEH MAINT (UTES ANNEK)
1405A	SEP TOLU/SHOWER	900	ADMIN GEN PURP
1405B	RG SPT FAC	901	GARAGE FT DET
1405C	RG SPT FAC	902-905	STORAGE GP INST
1405D	ACCESS CNT FAC	906	ARMG VEH MAINT (UTES)
154	ADMIN GEN PURP (POST HQ)	910	WATER TREAT PL



1:10,000



SHEET CAMP GRUBER CANTONMENT AREA AND RANGE LOOP AREA ROAD
EDITION 001
MAP CURRENTNESS 11 JUNE 2003
DATA CURRENTNESS 17 AUGUST 2001

SPHEROID.....WGS84
 PROJECTION.....UNIVERSAL TRANSVERSE MERCATOR
 HORIZONTAL DATUM.....WGS84
 PREPARED BY.....WESTERN REGIONAL SUPPORT CENTER