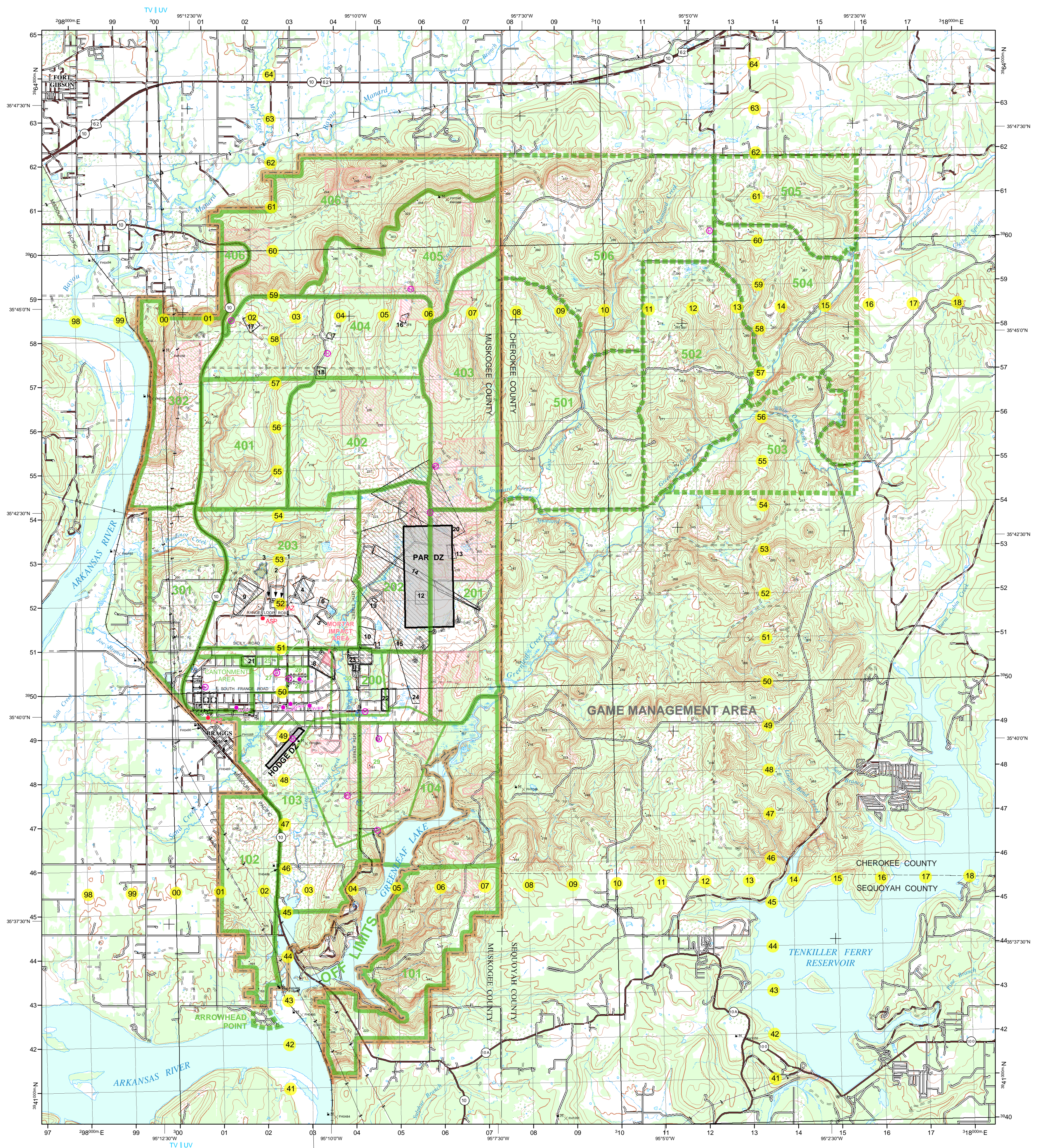


CAMP GRUBER, OKLAHOMA ARMY NATIONAL GUARD

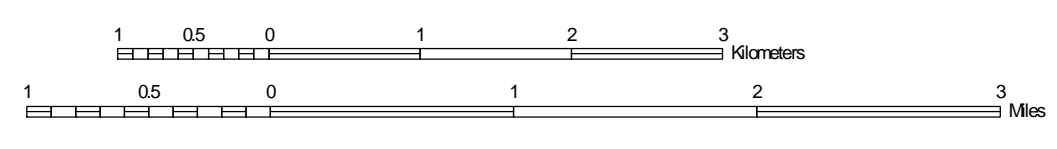


ITAM GIS
 GEOGRAPHIC INFORMATION SYSTEMS

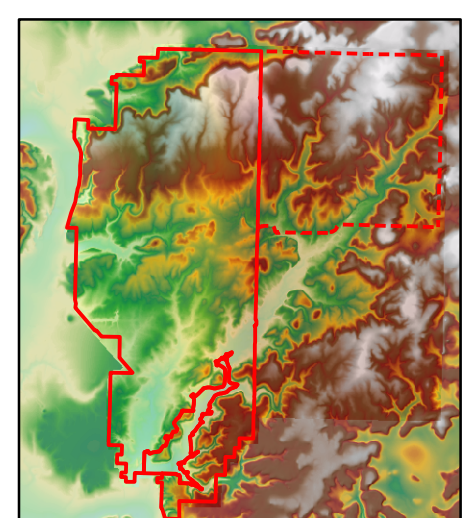
The Camp Gruber special was produced by the Western Regional Support Center located at the Center for Environmental Management of Military Lands in Fort Collins, Colorado. Funding was provided by the Integrated Training Area Management GIS program - U.S. Army Environmental Center (USAEC).

Note: All data layers represented maintain the same accuracy level, therefore the map scale applied does not necessarily equate to the implied horizontal and vertical positional accuracy.

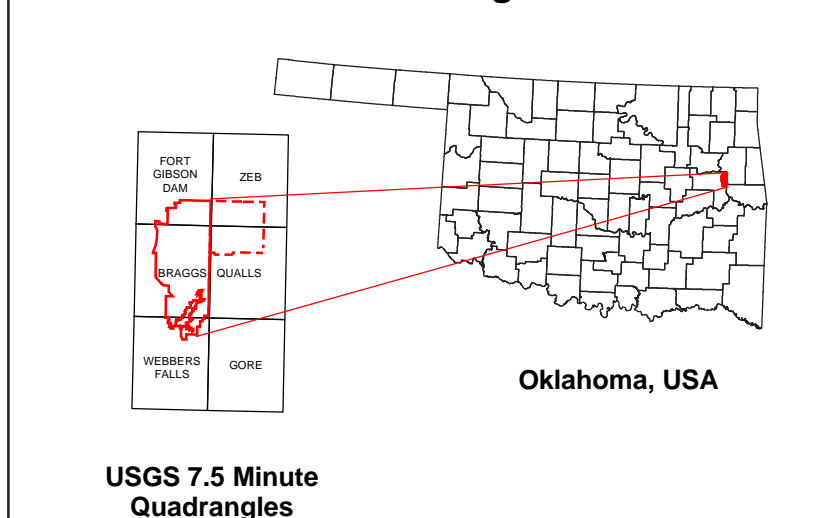
SCALE 1:50,000



Elevation Guide



Location Diagram

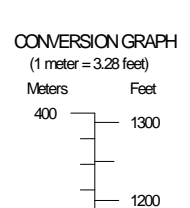
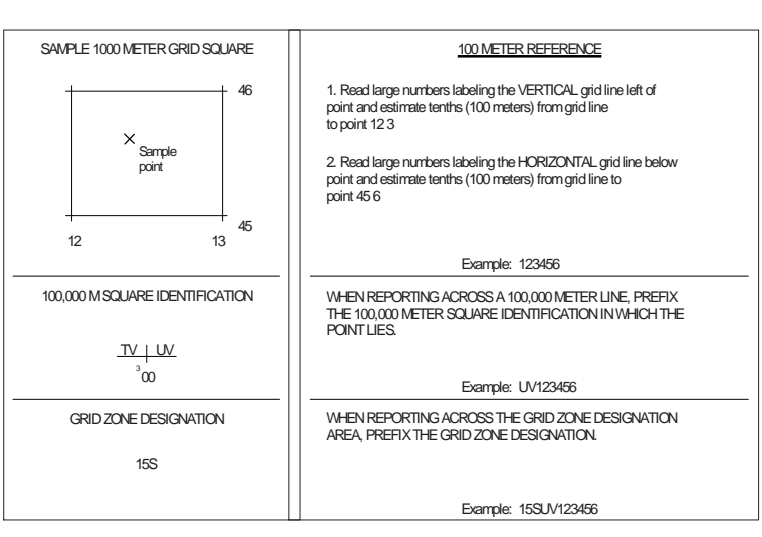


- | | |
|---------------------------|----------------------------|
| TRANSPORTATION | MILITARY FEATURES |
| Primary Road | Drop Zone |
| Secondary Road | Impact Area (Dotted) |
| Tertiary Road | Range |
| Unimproved Road | Land Management Area |
| U.S. Route, State Route | Training Area |
| Railroad, Active | Training Area* |
| Railroad, Abandoned | Sub-Training Area |
| HYDROGRAPHY | Ammunition Supply Point |
| Permanent Water Body | Landing Zone |
| Intermittent Water Body | Firing Point |
| Dry Lake | Forward Arming & Refueling |
| Wetland | Wheeled Vehicle Refueling |
| Permanent Stream | Helicopter Pad |
| Intermittent Stream | Hazardous/Chemical Site |
| BOUNDARIES | MISCELLANEOUS |
| County Boundary | Forest |
| Installation Boundary | Open Woodland |
| HYPSOGRAPHY-METERS | Building |
| Index Contour | Utility Line (Primary) |
| Non-Index Contour | Utility Line (Other) |
| Spot Elevation Point | Hiking Trail |
| UTM GRID | 2.5 Minute Lat/Long Point |
| 10,000 Meter | Bench Mark |
| 1000 Meter | Water Tower |
- * Land available for training upon request

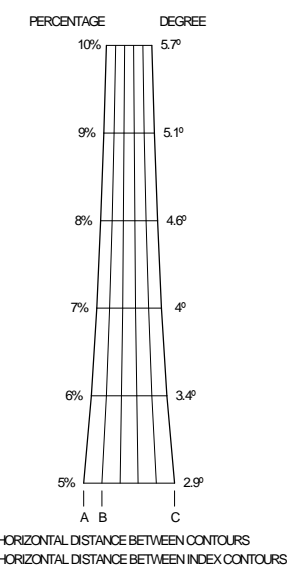
ELEVATIONS IN METERS

CONTOUR INTERVAL (HISTORIC INSTALLATION) - 6 METERS
(OUTSIDE INSTALLATION) - 10 METERS

SPHEROID: WGS84
 GRID: 1000 METER UTM ZONE 15
 PROJECTION: TRANSVERSE MERCATOR
 CENTRAL MERIDIAN: 96° W LONGITUDE
 LATITUDE OF ORIGIN: 37° LATITUDE
 VERTICAL DATUM: 1929 NATIONAL GEODETIC VERTICAL DATUM
 HORIZONTAL DATUM: WGS84
 CONTROL BY: U.S. GEOLOGICAL SURVEY
 PREPARED BY: WESTERN REGIONAL SUPPORT CENTER



SLOPE GUIDE



Ranges and Sub-Training Areas

- | | |
|---------------------------------------|---|
| Live Fire Ranges | Ranges |
| 1 Range 60 - Zero East | 21 Range 100 - Hand Grenade Qualification |
| 2 Range 90 - Combat Pistol | 22 Range 300 - LAC |
| 3 Range 110 - Zero West | 23 Range 420 - MOUT/CTF |
| 4 Range 130 - MRF 1 | 24 TOW Range - TOW MILES |
| 5 Range 140 - M203 | |
| 6 Range 150 - AT4 | Sub-Training Areas |
| 7 Range 190 - Live Fire Ambush | 25 CTT Course |
| 8 Range 210 - Mortar Scaled | 26 Range 200 - NBC |
| 9 Range 220 - M202/MG | 27 Range 300 - Air Assault |
| 10 Range 230 - MRF 2 | 28 Blue Devil |
| 11 Range 260 - Zero 2 | 29 Range 450 - EB Land Navigation |
| 12 Range 300 - Light Demolition | 30 Range 410 - Land Navigation |
| 13 Range 300 - Heavy Demolition | |
| 14 Range 310 - TOW/TPT | |
| 15 Range 310 - MK19 | |
| 16 Range 330 - Deliberate Attack | |
| 17 Range 350 - Squad Assault | |
| 18 Range 360 - Buddy Team Fire Team | |
| 19 Hand Grenade Familiarization Range | |
| 20 Sniper Range | |
- Post Headquarters: (918) 549-6001
 Range Control Contact: (918) 549-6041
- NOTE: SEE CANTONMENT AREA AND RANGE LOOP AREA ROAD MAP FOR MORE DETAIL