

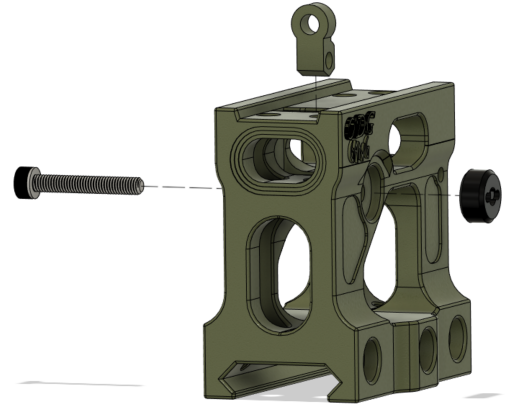


PRINT PARTS

PRINT BODY FACE DOWN
PRINT REAR SIGHT FLAT SIDE DOWN
PRINT WINDAGE NUT SCREW DRIVE UP
NO SUPPORTS NEEDED

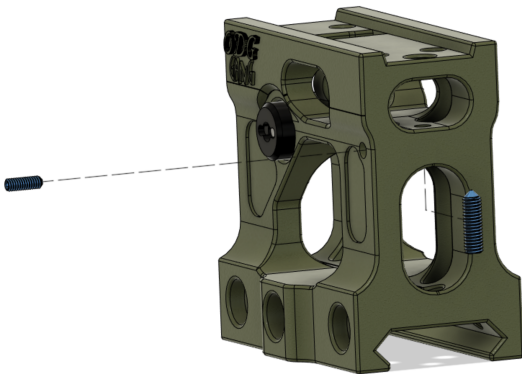
INSTALL WINDAGE SIGHT

INSTALL REAR SIGHT FROM THE TOP
THREAD M3 X 20 SCREW THROUGH REAR SIGHT
TIGHTEN WINDAGE NUT ONTO SCREW
THE SCREW SHOULD SPIN FREELY IN THE BODY
THE REAR SIGHT SHOULD MOVE LEFT AND RIGHT



INSTALL FRONT SIGHT

INSTALL FRONT GRUB SCREW FROM BELOW
THE TIP SHOULD BE POINTING UPWARDS
LOCK IN PLACE WITH M3 GRUB SCREW



INSTALL OPTIC

USING 4 M3 X 6 FLAT HEAD SCREWS
SECURE OPTIC TO BODY

DRIP LYFT

BROUGHT TO YOU BY AWCY?
DEVELOPED BY EWW AND TDKIN3D

