

ENCHANTED FOREST

May 2011

Edition Magazine



**DISCOVERING AND FINDING MAGIC IN
ONE'S SELF!!!**

A Place of Love and Support

~~Believe in Yourself – And Make It Happen~~

<http://enchantedforrest.ning.com>

The Enchanted Forest Team

~~Believe in Yourself – And Make It Happen~~

OWNER

BREEZE

HEAD ADMIN

SHADOW

ADMIN

CELTIC COYOTE

HEAD MODERATOR

ROSE MISTDANCER

MODERATOR

Soaring Eagle Spirit

Lord Whitewolf

Sapphire

Shadow_Owl

Just like with any online service, you should exercise common sense when using this site. Below we've outlined some simple guidelines to keep in mind:

* Create strong passwords and keep them secure, which means you should never share your password with anyone!

* Adjust your privacy settings so they match your level of comfort and remember to review them often.

* Be cautious about posting and sharing personal information, especially information that could be used to identify you or locate you online, such as your address or telephone number.

* Report members and content that violate our Terms of Service to the Admin, Shadow, Celtic Coyote or Breeze

* Block anyone who sends you unwanted or inappropriate communications and report it to the Network Creator or directly to us.

* Don't post anything that would embarrass you later. Think twice about posting a photo or other information you wouldn't want your parents, potential employers, college or boss to see.





IF YOU ARE IN ANY DOUBT SEND A MEMBER OF THE ADMIN A MESSAGE AND SEEK FURTHER ASSISTANCE - WE'RE HERE TO PROTECT AND ASSIST OUR MEMBERS AND TO KEEP THIS A PEACEFUL HAPPY SAFE PLACE FOR ALL

Links to Team Members

Are on main page if you need to contact one of us inbox us on our page or find one of us in chat

May 2011 Enchanted Forest

Print me ☺

Sun	Mon	Tue Tarot Class	Wed	Thu	Fri	Sat Craft class
24	25	26	27	28	29	30
1	2	3 	4	5	6	7
8	9	10 	11	12	13	14
15	16	17 	18	19	20	21
22	23 Susun Weed herb class	24 	25	26	27	28
29	30	31	1	2	3	4

<http://enchantedforrest.ning.com>

CRAFT CLASS FOR BEGINNERS EVERY SATURDAY NIGHT

TIMES

USA CENTRAL - 7 PM

EASTERN - 8 PM

WESTERN 5 PM

AUSTRALIA (MELBOURNE) -
NOON (SUNDAY)

UK -1 AM

HERBS WITH

SUSUN WEED

EVERY 3RD MONDAY

TIMES

CENTRAL - 6 PM

EASTERN - 7 PM

WESTERN - 4 PM

MOUNTAIN TIME - 5 PM

AUSTRALIA (MELBOURNE) -
11 AM

UK - MIDNIGHT

TAROT CLASS

WITH HERMOTIMUS

TUESDAYS

TIMES

USA CENTRAL - 8 PM

EASTERN - 9 PM

WESTERN 6 PM

AUSTRALIA (MELBOURNE) -
1PM (WEDNESDAY)

UK -2 AM



Relaxing reiki energy and Prana energy Including

Usui Shiki Ryoho Reiki, Kundalini reiki (Birth trauma reiki, Location reiki, Past life reiki, DNA reiki and crystalline reiki must be done before Kundalini reiki can be done, but I do offer these),Diamond reiki, purple reiki, gold reiki, full spectrum light energy and Prana/Tachyon energy(I can make an object of our choice into a Prana/Tachyon antenna) Distance reiki. Services performed by a licensed minister.

Out call (I will come to You) appointments available across the Salt Lake Valley, late evening / night appointments available on out call appointments. I can also take appointments in Draper UT. There is a \$30 love donation for a 30 minute appointment or \$45 love donation for an hour, (you can split a session with a friend) I also do distance Reiki \$10 for a 20 minute distance session.

For more information.

E-mail me placeofquietude@yahoo.com

or

Call 801-245-0392

Thank you!

Place of quietude relaxing Reiki and Prana energy



<http://placeofquietude.webs.com/>

Properties of the different woods

BY Harobred

Below is a list of woods and their properties that Ive compiled over the years,the work is not mine.I havnt given any credit because most of this I had gathered together in a composition book prior to having a computer

Rowan

Pyrus aucuparia

Also called the Mountain Ash, and Quickbeam for its powers of bestowing and enhancing life, Rowan is sacred to Capricorn. It especially bears the power of the Dark Goddess, the Crone aspect of Mother Earth, and through her the power of fiery Abban, Vulcan, Lord of craft, mountain, and metalwork. Rowan flowers and bright orange berries are marked by the pentagram, symbol of the five Elements; the berries, often retained through Winter, symbolize the endurance of Life through the dark of the year. Also called Witchen or Witchbane Rowan has been considered the enemy of all evil witchery, and protects against one being carried off to Faerie against one's will. A tree of astral vision and protection, particularly good for warding off evil spirits, Rowan traditionally is said to avert storms and lightning, and bring peace. The fondness of songbirds for Rowan berries, gives the tree a link to the bards, and the Goddess Brigid in her role as Muse of poets. It is a tree associated with serpents and dragons and sacred places, the leylines or dragon-lines of Earth energy. The dragon embodies primal energy, a strong force of creativity and natural flow, which cannot be "slain" or "tamed". Dragon energy is drawn into harmony when we enter into partnership with it by directing it in a Rowan wand. Its Elvish name, Luis, comes from the root lu "time" also found in luras "to judge." Elves frequently hold their judicial assemblies under old Rowans. Especially suited for magick giving form and order, ritual, growth, fertility, protection, women's autonomy, poetry, weaving and spinning, and geomancy or work with ley lines

Ash

Fraxinus excelsior

Sacred to Virgo and its ruler Mercury, planet of intellect and reason, Ash is a wood associated with many divinities. The number of its house is nine (thrice three). One of the few surviving Druid wands of old, found in an archeological dig, was made of Ash with a sunwise spiral design, symbolizing Ash's links to the Sun. So generally magical is the Ash that it is the wood used for Yule logs and Maypoles, and in some traditions the brooms of witches. Ash is as much attuned to Elemental Water as Earth, and so is the consummate wood of growth and fecundity, mothers and daughters, and female sovereignty. It is a wood of balance and the marriage of opposites. Well-suited for shamanic magick, protection, and to enhance one's skills at any art or craft, magick of wells and caves, Earth as the vessel of water, finding roots or working with plant roots, magick of horses, oceans, conquest, justice, and weatherworking.

Maple

Acer campestre

Sacred to Alban Elved (the Autumnal Equinox) because of its fiery red and orange colors as its leaves turn. Poised on the equinox, it is linked to both Libra and Virgo, Hazel and Ash. Maple's sacred bird is the Great Horned Owl who is herald of the coming Feast of Samhuinn with its magick and mystery. The owl is a bird associated with wizards and wisdom, and the bearing of messages in the night. In North America, especially in its northern parts, the Maple is a dominant tree with many varieties, including the sugar maple from which maple syrup was made by the Native Americans. As such it is associated with the life-giving sap of the trees, providing food and sweetness for those who treat it with respect and care. Maple is a strongly masculine wood, somewhat rebellious and tough, but with a beautiful smooth grain; hard, yet excellent for carving. Well-suited to spells of sending and communication, binding, transmutations, creation, revolution, rebirth, healing, beauty, art, and abundance.

Elm

Ulmus campestris.

One of the tallest ancient forest trees, graceful in its chalice shape, Elm is sacred to the Great Goddess in her form as Wise Grandmother. Manifest in the planet Saturn. Elm is also called "Elven" for its connection to the Elves and Faerie mounds, and so to burial mounds, and to death as the doorway eternal life. In recent times, as many ancient Elms have been killed off by Dutch Elm disease, the tree has come to symbolize and embody the struggle of Nature against humanity's destruction of the old forests through short-sightedness or the transportation of diseases from other parts of the world. Elm's spirit is majestic and expansive, rooted and wise. Well-suited to magick of Earth and invocation of the Goddess, healing, fertility, gardening, rebirth, destiny, wisdom., passage from one life (or phase of life) to another, metamorphosis, endurance.

Plum

Prunus domestica

Plum wood is not a wood expressly included in the sacred tree lists of the Elves or the Celts; however, it is closely related to its sister, the Blackthorn, which is known as a Faerie tree of dark omen, strong in protective magic. Plum is a fruit wood, and so bears powers of fertility but its thorns evoke powers of great reserve and protection, the setting of boundaries, and the ability to dissolve them. The wood itself is harder than Apple but has a similar creamy color, and the branches are tough, knotty, and thorny. Thus Plum is a consummate wand wood for an artist or anyone desiring to focus on magic that will enhance skill, overcome barriers, keep people or disturbance at bay, evoke toughness and persistence, patience, protection, and healing, especially of the blood. It is also well-suited for the divining of precious metals or minerals.

Hawthorn

Crataegus oxyacantha

Hawthorn or Whitethorn is sacred to Aquarius. It is a tree of defense with its twisted branches and sharp thorns, and it holds the power of lightning. Some loremasters say it can detect the presence of magick because it is a tree in which magical powers enter the manifest world from beyond. Well-suited for all protective magick and all magick aimed at strengthening one's magical powers, spells of control, or warding, sending, detection, concealment, weatherworking, and protection against lightning and evil spirits.

Lilac

Syringa

Sacred to Gemini, the Twins, lilac brings the root energy of expansion and growth, that underlies spiritual prosperity. Sacred to the androgynous and quicksilver Mercury, whose domain is writing, speech, song, reason, and travel by sea, air, and star. Lilac is sacred to bards and its intoxicating fragrance bespeaks erotic and creative power. Lilac wood is close-grained, creamy, and smooth, excellent for carving intricate interlace patterns. Well-suited to magick of union, attraction, enhancement of sexual pleasure, intellectual pursuits, imagination, information, mental concentration, travel, illusion, detection, divination

Hazel

Corylus avellana

Sacred to Libra, Hazel wood is imbued with magical power. Its nuts feed the Salmon of Wisdom in its deep pool. The hazelnut is also connected magically to the heart chakra. Well-suited to magick of wisdom, beauty, charm, love, stars, navigation, and creativity

Cedar

Cedrus

Sacred to the cross-quarter feast of Imbolc Cedar is a wood of protection and preservation. Cedar is especially powerful for clearing negativity from an area prior to magical work. The tree is also called Arbor Vitae, Tree of Life. Especially suited to preservation of sacred places, forests, and groves, dedication of sacred space for worship and magick, bringing of light out of darkness, star magick of all kinds, and summoning of helpful spirits.

Apple

Pyrus malus

Sacred to the Feast of Lughnasa and the Celtic Goddess Rhiannon, who is also one of Shava's masks, as Goddess of Stars and also of horses. Apple harvest comes on and after the feast of Lughnasa (August 1st) and marks one of the major foods of the Elves, often associated with the Faerie realms and the Isle of Avalon. Thus the wood has the power of Avalon and the immortality of the Faerie realms. Especially suited to opening the doorways into Faerie, spells to do with horses or travel, illumination, enhancing any skill, love, harmony, and beauty, harvest, and magick of divine, shamanic madness or visionary experience.

Linden

Tilia europea

The Linden, also called Basswood and Lime-tree, is the tree most sacred to the goddess Shava. It is a wood of truly cosmic power on every dimension and sphere of the Tree of Life. Linden is a very light, airy, and smooth wood, excellent for carving and capable of supporting fine details. Specially suited to star magick, spells of creation and transmutation, illumination, love, attraction, healing, enhancement of beauty and peace, and acts of enchantment.

Yew

Taxus baccata

Sacred to Mercury, spirit of intellect, thought, and communication and master of magick, incantations, and runes. He is also the psychopomp, guide of souls from one world to the next. As such, the evergreen Yew bears powers over travel between the worlds. The Yew is the tree of the Ovate, the seer and healer in Druid tradition. As such it bridges the worlds and opens doorways into the Otherworld. Yew is especially suited to spells of transformation and transfiguration, illusion, astral travel, mediumism, necromancy, conjuration of helpful spirits, guides and ancestors, and also spells to bestow knowledge, eloquence, or persuasion.

Oak

Quercus

The most powerful and sacred of Druid woods, Oak is magically linked to the constellation Leo. It holds power to draw lightning or the bolt of inspiration. The Sun, which rules Leo, is the source of life and light.. Oak is one of the longest lived trees, thus embodying great wisdom as well as strength. The name Duir is related to dwyn, "door," or "portal," the great door of a manor dwelling. It is also, of course, often linked to drwyd, "druid" or "wizard." As the wizardwood, there is no more magical wood for wandmaking and it is especially noted for enhancing the endurance of spells against time and counterspell. The acorn is associated magically with a helmeted head and so to the crown chakra. Natural branches of Oak are often twisted and gnarly and have a coarse, dark grain. It is a hard and heavy wood. Especially suited to magick of kingship and wise rule, personal sovereignty, authority, power, protection, sealing or opening doors, endurance, and invocation of wisdom, fertility, and abundance

Holly

Ilex aquifolium

Associated with the Holly King who defeats the Oak King at Midsummer each year and reigns until the Winter Solstice, Holly is one of the most fiery of woods and second only to Oak for its sacred regard by the Druids. Holly has been regarded as a powerful protective wood, good against evil spirits, poisons, angry elementals, and lightning. It is also associated with dream magick and fertility, and is well-suited for any magick dealing with the overthrow of old authorities, success in business or endeavor, or spells seeking progress to a new stage of development. Holly wood is very fine-grained, hard, and smooth, and almost ivory in color if it is not stained. It is a truly exquisite wood for wands.

Sequoia

Sequoia sempervirens

The giant redwood is the most magnificent of all conifers and its Elvish name, Thor, draws an association with the Norse god of that name, spirit of thunder, storm, and lightning. Redwood is excellent for drawing down power from Heaven to Earth, spells of religious seeking and discipline, spells of mystical union with nature and wild animals, hunting magick, the martial arts as spiritual discipline, and spells for innovation and sudden revelation.

Hickory

Hickory is sacred to Obaash, God of the Sun, Hickory is a hard and close-grained wood, with solar energies similar to Oak. The hickory nut is linked to the solar plexus chakra. It is especially suited to magick of abundance, wholeness, power, presence, command, discipline, acquisition, giving of gifts, and the finding of direction.

Cherry

Prunus avium

Cherrywood is sacred to Ambash, God of the Hunt Cherrywood is red in color and darkens with age and exposure to the sun. Its companion stones are obsidian and sard. Its sacred bird is the Red-tailed hawk. Cherrywood carries the energy of the magical Will through which magical intentions are directed into the outer world of manifestation. Cherrywood is imbued with the power of making and doing, achievement, and self-assertion over obstacles and critics. It is the pure energy of Will and desire. The cherry fruit is magically linked to the root chakra and so to sex and birth: the life force of attraction and renewal. Its sweet-scented flowers evoke eroticism and the power of love in its more subtle forms as well as the essence of springtime with its powers of renewal. Especially suited to invocations and blessings of sacred fires, spells of finding, hunting, conflict, war, competition, sex, passion, communion with animals, unification of groups or tribes, and the amplification of magical will.

Walnut

Juglans regia

Sacred to Vashaan the Lord of Winds and Lightning, Walnut partakes of Elemental Air and Fire. It is perhaps the consummate wood for weather magick. The shape of the walnut nut connects it magically to the head, and so to the crown chakra. Walnut wood ranges from light to very dark and is well-suited to wand carving. It is especially suited for wind and weather magick, spells of expansion, vortices, enhancement of the powers of breath, spells to cast or avert lightning, teleportation and astral travel, and inspiration.

Beech

Fagus sylvatica

Sacred to Obraash the Sun lord, whom the Elves call Alba, Beechwood is closely related to Oak. The Beech tree is a large and spreading tree that bears edible nuts. It was particularly valued by the ancient Celts -- and the Elves -- as a nut used to fodder animals, especially the sacred swine. Beech is the family of trees to which Oak belongs, thus is Beech sometimes called Atarya Dwyrion, "Grandfather of Oaks." The wood of the Beech has a superb grain that finishes most beautifully. Magical operations especially applicable to Beech include: spells of information, especially seeking old wisdom; invocation of ancient guardians or Ancestors; research into old writings and the runes; magick of the Summer Solstice, culmination of desires; magick of victory.

Dogwood

Cornus florida

Osier is a tree most sacred to Agni, the primordial Fire. Zallis is held, by the Elves, to be sacred to the spring fire festival of Beltane This wood magically links to warrior heroism and superhuman physical prowess of the hero, and links to domesticated dogs, their healing and protection and their loyalty and affection too. Magical operations especially applicable to Osier include: magick of flowering; evocation of one's Ancestors; renewal of cycles of fertility; consecration of ritual or hearth fires; giving of comfort or healing, and spells of banishment and protection.

Sassafras

Lauracea

Element: Fire

Gender: Masculine

Jupiter

Native Americans and early settlers considered sassafras to be a cure all for all sorts of ailments. The root bark was once believed to be a curative, capable of treating everything from headaches to malaria, fever, liver problems, stomachaches and colds. people believed the sassafras fragrance would drive away bedbugs and other pesky insects. Magical properties: sassafras will drive away evil spirits and give people restful sleep. Eases problems with the digestive system. Sassafras brings prosperity.

Woods of Elemental Water

Alder

Aldus glutinosa

Alder is sacred to the constellation Pisces, the Fishes. It is a wood which lasts a long time submerged in water and is often found on river and lake banks

Magical operations most applicable to Alder include: protection against drowning and death; death curses and shielding against them; shielding against all ill-omens and destructive emotions; cultivation of the vision of inner and outer worlds; bridging of the above and below; preparation for conflict; shielding against unwanted intrusions from beyond

Birch

Betula alba

Sacred to the festival of Alban Eiler (Vernal Equinox). In the Celtic Ogham Beith is accorded prestige as the first tree, one of the trees that emerges first to establish a new forest, a harbinger of youth and springtime. It is often associated with the beginning of the year. It is a tree of beginnings in general and of the Bards, as the first grade of the Druid order. The Bards are accorded first honor as the singers of the Creation epics, those who sang the worlds into existence. Birch is also a wood with great powers to purify and discipline, to create the new forest in service to the great trees that will come after, such as the oak and ash and maple. Birch forest is young and so birch is linked to youth and all things new. It is especially suited to magick of new beginnings, spells of youth and fresh starts, bardic enchantment, creativity, procreation, renewal and rebirth, purification, and spells for discipline and service

Willow

Salix

Sacred to the Moon, Omulan or Diana, Willow is a wood of the Water Element. Willow is a tree of emotion, love, intuition, and poetic inspiration. Willow is especially suited to works of the New Moon, magick related to cycles of fertility or creativity, spells of glamour and bewitchment, change, relationship and female rites of passage. The Dark Moon, as it is called, is the time best suited for spells of dissolving and banishment, the time to get rid of old habits that no longer serve a good purpose in your life. Traditionally associated with witches, willow is the perfect wand wood for the ritual of "Drawing Down the Moon." As the source of salicylic acid, the main ingredient in aspirin, willow is also a wood appropriate for spells intended to remove pain and give comfort.



Paganopolis

<http://www.paganopolis.com>

A Kentucky based secure online store offering hundreds of Pagan/Heathen items for your personal path of exploration and enjoyment

We chose Paganopolis as our company name because today's world has moved into the internet communication age, giving the ability to instantly access our Pagan/Heathen friends and family. We are actually able to communicate with each other no matter what our geological location is, enabling us to foster a community that can, and does, share ideas and trade with one another.

While there are other sites out there that offer similar products as we do, we focus our product line on items that enhance group or solitary ritual practices and we believe in offering dependable customer service through out the Pagan/Heathen community no matter their geological location, Yes , we do ship all our products (with exception of Athames) to any location that excepts U.S. packages

- Alter items
- Athames and more
- Bags & pouches
- Books
- Boxes
- Candles & more
- Catchers and Chimes
- Cauldrons
- CD's
- Chalices
- Crystal bells
- DVD's
- Jewelry
- Mortor and pestles
- Oils & diffusers
- Rune sets
- Ritual water
- Smudge sticks
- Statuary



When ordering

Please quote coupon code "EFM" to receive an additional 10% off already discounted prices



CRAFT CLASS FOR BEGINNERS



This Class is Weekly Classes Every Wednesday, the class is taught in a live chat box and it is a time for people to share and learn. Basic Topics taught each week and then a time of Q & A after class is finished. All classes are then written up and put up in group for all group members to read over.

Please come along and join in – this is an amazing chance to learn with others !!!!

COME ALONG TO THIS LIVE CHAT EVERY SATURDAY NIGHT

Times of Lesson for each country

USA Central - 7 pm

Eastern - 8 pm

Western 5 pm

Australia (Melbourne) - Noon (thursday)

UK -1 am



<http://enchantedforrest.ning.com/group/craftsclassesforbeginners>

Albatross - Ainu

Why you should keep the skull of this seabird in your home

By Martin Stompingelk

"The albatross is an object of worship, and the origin of prayer being said to him is as follows: Once upon a time, many years ago, a bad disease broke out among the Ainu, so that many of the people died. At that time there lived a very good and honorable man whose name was Tokirange. Now, this man had a wonderful dream, in which he saw a very large house with a multitude of people assembled in it. In front of the assembly a chief was standing up, who said: 'I was one day passing through the midst of Ainu-land, not in the least expecting to meet with anything bad, but in the huts of many of the people I smelled the fearful odor of a certain bird which comes from the sea, and which is called by the name albatross. My friends, enter you not into the house where there is the head of one of these birds, for such houses are not for you to enter.' So spake the chief.

"After this the man awoke, and as he wished to know what his dream could mean, he arose and walked through the whole country. As he looked into the huts he saw that there were many in which the people kept the head of an albatross as a fetish, and to which they were in the habit of offering inao (inao are ceremonial totems made of whittled willow sticks) and drinking sake (the fermented rice drink of Japan). He also observed that there was no disease among those who kept this charm, and that in every hut in which it was not found there was someone ill. The man therefore went and procured one of the heads, worshipped it, and scraped some shavings off the skull and beak. He put the scrapings into a cup, poured hot water upon them, and gave the decoction to the sick people to drink. All who partook of this remedy were perfectly cured in a very short time.

"Therefore the head of this bird is kept wrapped up in inao shavings, and when a person gets sick it is taken out, placed upon a tray and devoutly worshipped. It is then scraped and the powder given to the patient to swallow in hot water. Thus, although in the beginning the Ainu did not all know the value of the head of the albatross, yet after the dream of this man the matter was made known to everyone. The man himself also knew that the chief he saw and heard speaking in his dream was no other than the demon of the disease."

The Ainu and Their Folklore, by the Rev. John Batchelor (London: The Religious Tract Society, 1901).

living in the cosmic swirl,
going round and round,
singing my song,
Dancing my dance...
Stompingelk,





Easter Island

By MagickalPagan

Formed over two million years ago by three volcanoes rising from the ocean floor, today Easter Island is one of the most remote human populated places on Earth. Situated in the South Pacific Ocean, it is approximately 2,200 miles off the coast of Chile though its' closest inhabited neighbor is the Pitcairn Island some 1,800 miles to the west.

The first settlers, most likely Polynesian, arrived on Easter Island between 400 -700 C.E. bringing with them various seeds, root crops and domesticated animals to start a new colony. Over the next twelve hundred years they would wreck havoc upon the indigenous flora and fauna they found there bringing extinction to all but a few.

Through various forms of scientific research, such as Palynology, Easter Island's sixty-four square mile landmass is thought to have been the home of at least thirty different species (resources vary on this point) of plant life including trees, flowering shrubs, ferns, reeds and other grasses. There was only one known species of palm, named *Paschalococos disperta*. Recent studies suggest that there may have been as many as sixteen million of these palms at one time inhabiting Easter Island. The native fauna consisted of land birds, insects and lizards of which only a few of the insects species has survived to present day. With its rich flora life, Easter Island would have been ideal for migrating and nesting seabirds as well.

With no thought to future generations, vast amounts of forest were slashed and burned to make room for ever increasing human settlements and farmland. There is evidence to suggest that in a time period of three hundred years as many as six million trees were cut down. Trees were also harvested to build homes and were used as fuel for cooking fires and for cremation of the dead. Palms were harvested for making canoes that were used mainly for fishing. Some archeologists theorize that they were also cut down and used to transport the huge monolith statues known as moai. The final acts of deforestation occurred in the early part of the 1600's and have been linked with the abrupt ending of quarrying stone used in the making of the moai. Of the 887 known moai, 397 can still be found in the quarry of Rano Raraku in various stages of completion.

The deforestation of Easter Island may not have been committed by humans' insatiable needs alone. Dr. Terry Hunt, an archeologist with the University of Hawaii has put forth the theory that the Polynesian rats played a substantial part in its demise as well. The rat having come ashore with humans, most likely as food themselves, found a seeming unlimited food source in the seeds found on the Island and with no natural predators to keep their numbers in check, spawned into the millions. Numerous caches of rat-gnawed palm seeds have been found all over Easter Island including in its labyrinth system of caves. The reproduction cycles of

palms, then later trees and flowering shrubs would have come to a standstill. With a human onslaught at one end and a rat-gnawing infestation at the other, the original ecosystem of the island was caught in the middle with little chance of surviving.

Without the vast woodlands and palm thickets to hold the topsoil in place, soil erosion eventually led to the depletion of nutrients in the soil leaving huge wastelands that to this day have limited capacity to maintain plant life. Soil erosion and other factors would lead to massive crop failures for years to come.

Social conflict over depleted resources led to the collapse of the social structure that at one time was so peaceful that their religion contained no god or personification of evil. Starvation led to cannibalism as the human population became trapped on the Island because they no longer had the means or the knowledge to build the canoes or rafts to travel the vast ocean to escape their fate.

Known as 'Te Pito o Te Henua' which means 'The Navel of the World' to the original settlers, Easter Island (also known as Rapa Nui) was so named by the Dutch explorers who landed there on Easter Sunday in 1722. Once this tiny landmass was discovered by Europeans it took even less time for them to exploit what little resources were left, including the people. By 1870's with the introduction of sheep what little scrub areas that remained was wiped out except for one surviving tree of a species named *Sophora toromiro*. This tree was found in the crater of the volcano, Rano Kau, one of the three volcanoes that helped form the island over two millions years ago. Seeds from this tree were collected in the 1955 - 56 expedition led by Thor Heyerdahl. Some seeds of *Sophora toromiro* were also gathered in 1774 on Captain Cook's second voyage. This last remaining wild specimen was cut down in 1960 for firewood.

In 1995, one hundred and fifty seedlings of *Sophora toromiro* were donated by the Goteborg and Bonn Botanic Gardens in an effort of restoring them to their native habitat. Unfortunately, due to the continual problem of soil erosion this project failed.

In the prophetic words of Jacques Cousteau "Perhaps here on Easter Island, as elsewhere, man intruded upon a natural process, discovered too late that in nature the injuries we inflict are not always self-healing or even curable."





Gods & Spirits

By ZELDA OF AREL

I SEE HER FACE
IN THE MOON
I SEE HIS FACE
IN THE SUN

A BREEZE IS BLAZING IN MY FACE
I THINK OF THE SPIRIT IN THE AIR

A CANDLE SHINES FLICKERING A BIT
I THINK OF THE SIRIT IN THE FIRE

A BINE CREEPS AROUND A STONE
I THINK OF THE SPIRIT IN THE EARTH

A RIVER FLOWS IN ITS PATH
I THINK OF A SPIRIT IN THEWATER

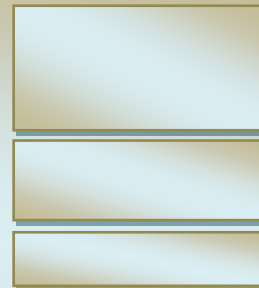
THEY ARE AROUND US
KEEPING US ALIVE
A NEVER ENDING CYCLE MAKING THE WORLD ALIVE

POSTED BY BLAZING EAGLETREE



Holiday

By Christopher Stewart



Can't the past ever go away ?
Perhaps it doesn't have to stay
Perhaps there is a better way
Than to its tempting lure fall prey

Indeed life is quite a journey
Hardships, burdens, and come what may
Why carry those of yesterday ?
When the future is on its way

Promises of a brand new day
From gloominess do shy away
Forgive oneself, hurting allay
And allow guilt its holiday

Listen to the musicians play
They sing the song of the blue jay
Let the sun outshine the clouds grey
Trust only joy to show the way

hope you enjoy them... :o)

love & light,
Chris

ENCHANTED FOREST NEWS

WE NEED THE MEMBERS HELP!!

Please help us make the forest the top of Ning and The Pagan Networks. This will only take a few seconds.

Please VOTE FOR US - the banners are on the front page

ITS SIMPLE

Click on the "VOTE FOR US" BANNER ON FRONT PAGE (MIDDLE LEFT OF FRONT PAGE) AND THE NING 100 TOP NETWORKS



Then Click on the ENCHANTED FOREST BANNER

This should take you back to the site



THATS IT - Simple

You can vote for us as many times as you like (the more the better) encourage all your friends on the site to do the same. Lets see how high we can get

Many Thanks

CREATING GROUPS

At the Enchanted Forest we try and maintain an "open policy" with this in mind we ask that all Groups created by members are created and open for all - No groups should be set to private. Thank you all for your continued support and input in the Forest.

And to be sure is not another group of the same topic..many groups have been here long time and have gathered all sorts of information and we like to utilize them as much as possible..

So before putting one together check through to make sure is not another..

And when putting a group together ..please have info ready or discussions along with picks..have noticed some groups get started ..but without info or description or any discussions..we usually wait a week to give person time to do so..then if nothing is added ..will usually remove the group..

We try to keep them active and share the contents of these groups with members plus we always have new people coming in..also helps to make sure these groups are updated.

MOONDANCERS CURIOSITIES

Please contact us at r.haynes@moondancerscuriosities.com or

(570) 447-0487 Please leave a message



This is a picture of the first candle carved for a customer.

Candles can be carved to your picture or can be painted.

All our pillar candles are poured and carved.

This candle is 3" around and approximately 9" high.

Candles can be poured to different sizes .

The basic pour cost is \$5.99 USD*

The cost of carving is additional, please ask for an estimate of what you would like to have carved on it. All artwork is subject to your approval before carving.

Votive candles can also be poured in single colours or multiple colours , also with scent for each layer of colour or single scent for the entire candle.

Votive candles are \$1.25 USD*



All candles are hand-dipped/ poured. Candles can be

dipped to be 4", 6" or 8" taper candles .

4" Tapers are \$.50 US D*

6" Tapers are \$1.00 USD*

8" Tapers are \$1.50 USD*

Larger candles will be priced according to size



Our current scents include (with new scents being created by our family as we create new candles):

Beltane
Mulberry

Cinnamon
Rose

Jasmine
Unscented

Lavender
Ocean

Coconut
Mint

*Shipping is additional based on weight of order.

DISENGAGING FROM NEGATIVE ENERGY

BY SOARING EAGLE SPIRIT

by Stephanie Brail

We're constantly bombarded with negative energy from people and places around us. If we're not careful, we can take that energy in and make it our own. Additionally, the negative energy can hook itself into a vulnerable spot in your psyche – say, that spot in your heart that feels unlovable – and by pushing your buttons, suck you in to a negative downward spiral.

The more we work on ourselves and heal our psychic wounds, the less likely we are to be affected by surrounding negative energy. Until we're strong and healed, we need to be very aware and careful of the energies surrounding us.

Negative Places

People and places carry their own energies that can adversely affect us. A place can hold the energies of fights, depression, and even murders and suicides. (This is why people often “sage” a home when they move in. Burning sage clears away the bad residual energy.)

A negative place holds the combined psychic energy of the people who inhabit it. The leadership who runs the place (if there is a leader) will often set the tone and creating a space that is either warm and nurturing or energetically draining.

For example, churches and other places of worship will often be filled with positive energy due to the prayers and intention of the audience. (Some churches, however, may have bad energy if the leadership is insincere...and yet, if the congregation is sincere enough, their combined positive energy can overcome even the worst leaders.)

Yoga centers often have positive energy, especially if chanting is used. Golden Bridge Yoga in Hollywood has a palpable positive energy due to the persistent and continual chanting and Kundalini Yoga practices.

Negative spaces also have a palpable energy. Haunted locations, prisons, and soulless organizations can have bad energy. Sometimes these energies are very dark in nature. There is a vortex on the haunted ship the Queen Mary that is so negative, just standing near it can make you feel fearful and anxious.

Many healers will also cite bars and nightclubs as harbors for negative energy. The drinking and drug use will sometimes attract lower energies. So it's a good idea to shield yourself when entering such environments.

Signs of Psychic Attack

While everyone is different and responds differently to energy, here are a few signs you are under psychic attack:

- 1. You feel drained and irritable around the person.**
- 2. You have a hard time letting go (of them, of their problems) even though you know you should.**
- 3. You find yourself over-reacting emotionally, in ways that you wouldn't otherwise. You feel out of control.**
- 4. You are obsessing and negative.**
- 5. Things in your life are going haywire and the usual flow has stopped, i.e., money is hard to come by. (This is with an extreme psychic attack.)**
- 6. You continue to engage (fight, respond, defend yourself) even though you know you shouldn't.**
- 7. You get physically sick when you spend a lot of time with the person. (I had a boyfriend who constantly gave me colds.)**
- 8. You doubt yourself and your own intuition based on the twisted logic presented by the person; you blame yourself in a one-sided fashion. ("This is all my fault: I'm bad, I'm unlovable, I'm the horrible person.")**

Dealing With a Negative Person

Not every negative person is actively attacking you personally. Sometimes, they are just negative, period. There's a guy I know who is fairly universally hated by everyone who deals with him. He is condescending, arrogant, and patronizing. Yet, because he's taken the reins at this particular organization and gets stuff done, he feels he is the one in the right.

This man is not actively intending to be negative, but his own personal baggage, control issues, and negative energies adversely affect most of the people he interacts with. The organization also suffers, and many people have left, in part due to his negativity. The energy has spread to the space itself, and when you walk in, you can literally feel a dark, heavy energy blanketing the location.

Unfortunately, even though such a negative person is not personally attacking you, you still need to protect yourself from them.

How to Shield Yourself

Many, many techniques are available to shield yourself from negative energies. The most important aspect of these techniques is the intention behind them. Here are a few simple ones to try:

- 1. Remove yourself from the person or environment.**

Ideally, you will remove yourself entirely from the person or environment. I consulted for a company once that bounced so many checks that the bank shut down their account. They were actively perpetrating check fraud. They bounced my checks too. There is no good reason to keep an organization like that in your life. Even if you think you need them, you don't need them. Quit, leave, and get the hell out of dodge. (This goes for certain people too.)

2. Use the white light technique or cross your arms.

If you must be around a person or place that is negative, the simplest thing you can do is imagine yourself surrounded with white light. Do this often! When speaking to someone who has bad energy, cross your arms. It helps to keep their energy from infiltrating yours. (Very useful at work.)

3. Go to a higher power.

If you believe in such things, God, Jesus, angels, or whatever higher power you trust can be good allies. Pray to God for protection. Ask Archangel Michael to remove negative energies from your personal space.

4. Clear the energies in your home.

Your home environment can be contaminated by negative energies, whether it's from neighbors, friends visiting, and sometimes whoever is living with you. Burn sage, meditate, or chant to clear the energy. ("Om" is a universal clearing mantra.) Clear out your old clutter and throw it away – often it carries old negative energy with it.

5. Cut cords.

Etheric cords are energetic highways that run between you and other people you have connected with. When used positively, they allow for the exchange of love energy and psychic information. When used negatively, they are used to drain energy and keep a person attached long after it has been good for them. Cords re-appear daily so you should clear them as much as possible. If you don't know a cord clearing technique of your own, simply ask Archangel Michael to cut them for you at the end of each day.

6. Mentally disengage.

When a person is pushing your buttons and you find yourself getting emotionally overwrought, take a few deep breaths and mentally disengage. Repeat to yourself some sort of statement that feels comforting to you, such as "I am letting go" or "I love myself."

7. Stop trying to fix the other person.

If you find yourself constantly trying to help someone who is going through a lot of personal dramas, and yet, they continue to be messed up at best, it's probably time to stop. Only help people who ask you for your help and who appear to be actively trying to improve their lives. Give the others over to God.

8. Trust your own intuition.

One of the biggest problems we have is that we often ignore our own intuition to make excuses for other people. It's hard to believe that someone you love might be psychically attacking you. You want to make excuses for them. It's easier to believe that you are the bad guy. And certainly, while we are not all perfect and we do sometimes do rotten things, if a person is making you crazy, it's probably them and not you. Listen to that little voice in your head that says, "Hey, this is not right." Pay attention to that sick feeling you have in your solar plexus. It's telling you something. Trust it.

9. Heal yourself.

The more you heal your inner wounds, the less likely people will be able to push your buttons. But don't kick yourself if a button is pushed – you're human! The next time someone says something to you and you find yourself overreacting, make a note of it. Later, when you've calmed down, you know you've found a little sore spot that needs some healing. A little Reiki or EFT can go a long way.

10. Laugh about it.

My friend and I have a name for people who psychically attack now. We call them “lizard people” (in reference to the controversial David Icke's theory that the world is run by evil shape-shifting reptiles). Laughter is a good way to disengage and realize that what seemed threatening really isn't that threatening after all. (After all, psychic attacks are the most effective when you buy into them on some level.)

These are just a few suggestions to help you when dealing with negative environments and people. As you become more aware, you will find yourself able to respond more proactively instead of automatically. As time goes on you will find yourself naturally being drawn to more positive environments and letting go of the ones that bring you down. Then your life can continue along a positive upward spiral.



JAZ

You have left a hole in each of our lives

The Pain of Missing You Sometimes Too Much ...

The Question of Why Asked Many Times

But You Are With Us - And Always Will Be

You Have Left Your Love and Compassion

With Each Of Us

We ALL Miss You and LOVE You

Your Star Will Shine Over The Forest

FOREVER

Your Friends On The Enchanted Team



A SHINING STAR



By Rosemistdancer

*You left us without a warning
You left us without a good bye
You left us without even a word
Now we sit here and ask ourselves WHY
Why did you go
Why was it your turn
Why couldn't you stay
You were to young
You were never to go yet
We understand you are on a journey
Just remember we all Love you
You are and will always be our
Shining star!*



I made this poem and i feel it is the right time to share it with everyone



ENCHANTED RADIO



ENCHANTED RADIO

Enchanting the
Airwave with music
that will enchant
you.

In Partners with
THE ENCHANTED FOREST

Comments

created with BannerSnack

The Enchanted Radio is pleased to announce that we now have a request line that will be up and running.

This will be only for the times that there are no Live DJ's scheduled. All DJ's will make sure that Celtic or Gothic is given a updated schedule as now any blank slots will be filled by a Auto Dj. Due to a limit of songs available to be posted to the data base needed to run this request line for Auto DJ, the list will be limited to 3 songs per artist and will be changed out weekly. If you do not see something that you would like to hear in the data base, please let Enchanted Radio, Gothic Misstress, or Celtic know. We will add it into the next weekly rotation of songs.

The request line will work as follows:

- 1.) Go to this link <http://www.enchantedradio1.webs.com/> and click the tab that says requests.
- 2.) Scan the posted Data base list.
- 3.) Type the artist/song title into the slot. (If you wish to included an email, you may do so. We do not require it.)

We hope to add additional songs into the data base. We evaluate this on a month to month basis and try to increase the data base to include a larger selection of music. If you have any question, please contact Enchanted Radio, Gothic Misstress or Celtic.

Thank you for your continued support

The Enchanted Radio Team.

ENCHANTED FOREST RADIO MERCHANDISE

http://www.zazzle.com/enchanted_radio





In these Times

By Lord Raze White Wolf



It Is In these Times , That All must Gather And Set Aside Religious And political Views , And Stand up And Think About our Futures. Not only For us But those Who Will Follow Us In the Days , months , and years To Come. In our trials , Of life , We Have Come to Suffer Hardships , Pains ,and Broken hearts. That All have Endured Of the years. We have Sit Back And Watched the future Become more Bleak And Diminished By our own greed thoughtlessness And Self centeredness. The hope Stands With in us All And Until We All Stand Take Each others Hand , And put The Value on life , Not on Coin , Possession , Creed. Then And only Then Can We Stand As a People A Working Entity , For The better Quality of life Of All.

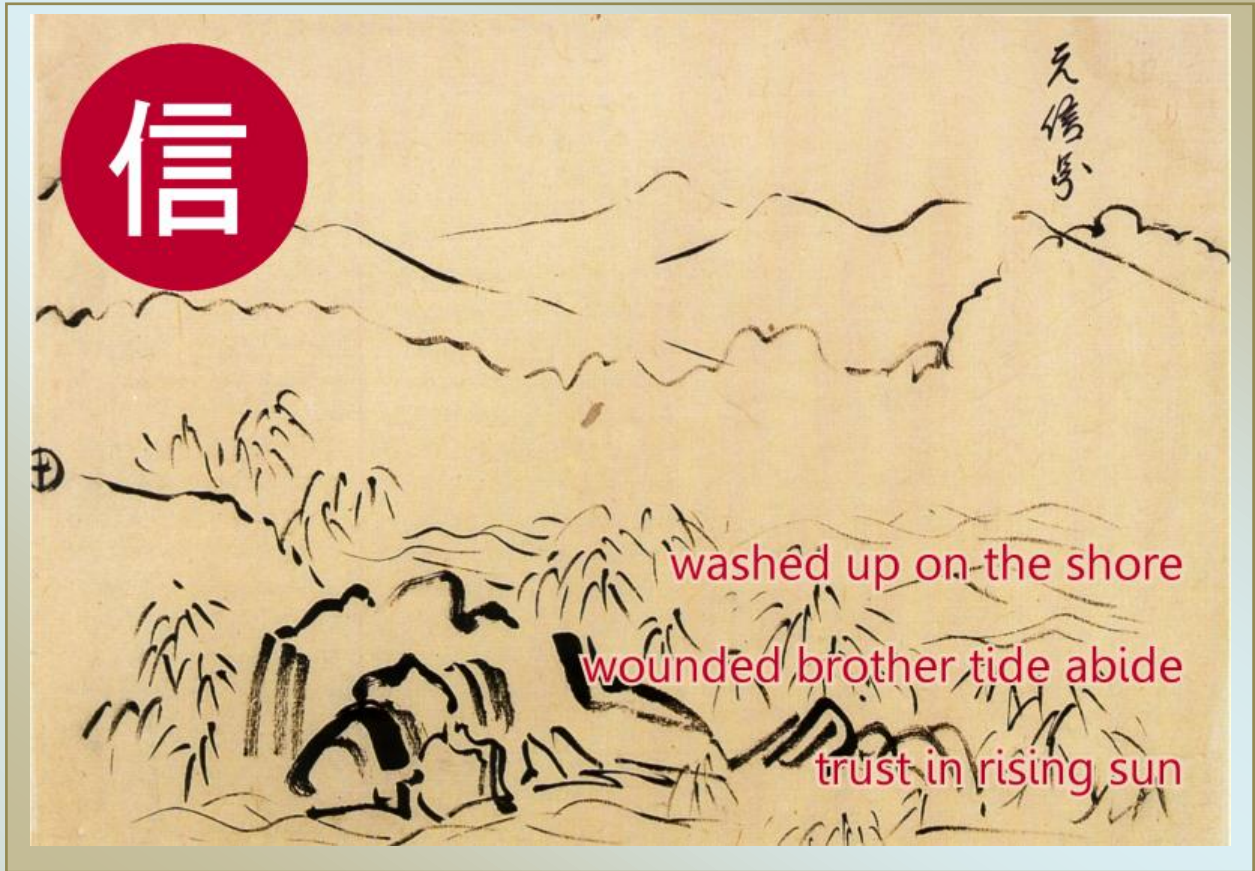
Mother Earth Don't Need us To Heal Her Self , She Can Do This With or With out us. But If She Does this With out Us None of Us Will remain. So We As A People have A choice , Stand As A People And Take the Challenge Mother Earth Gives Us And Work towards Making Her Well , In Saving our People Or Fail And Be Wiped From Her Suffice So She might Again Heal And start over With new life.

As Individuals and Single Entity We Are Strong And We Can Accomplish A lot. But If We Use that Energy And Strength In groups We Become A force to Reckon with , As A Single Race Of Humanity We Can Accomplish What no Other , Generation Has Accomplished. Peace , Love , Harmony , Wealth of these three Items That Out Ways Any other Form. That has Come before.

In these last Weeks We have Witnessed Tragedy , Disaster, And The loss of loved Ones Dearest to Our Hearts. My Love , My heart , My Energy Goes out to those Who Are Left Behind to Grieve in the Wake of These Atrocities. And To those Who have traveled From our Lives On to there Next journeys I Know They Will Be The Better For it And They Will Make Better There Futures In Another time. The Gods And Goddesses Bless to All And I hope What I have Wrote Here , opens Some Eyes , Has touched Some Hearts, And Maybe Will Encourage More To Stand And hold hands And Work Towards Alls Future Not Just our Own.

Lord Raze White Wolf of the Clan White Wolf of Missouri.



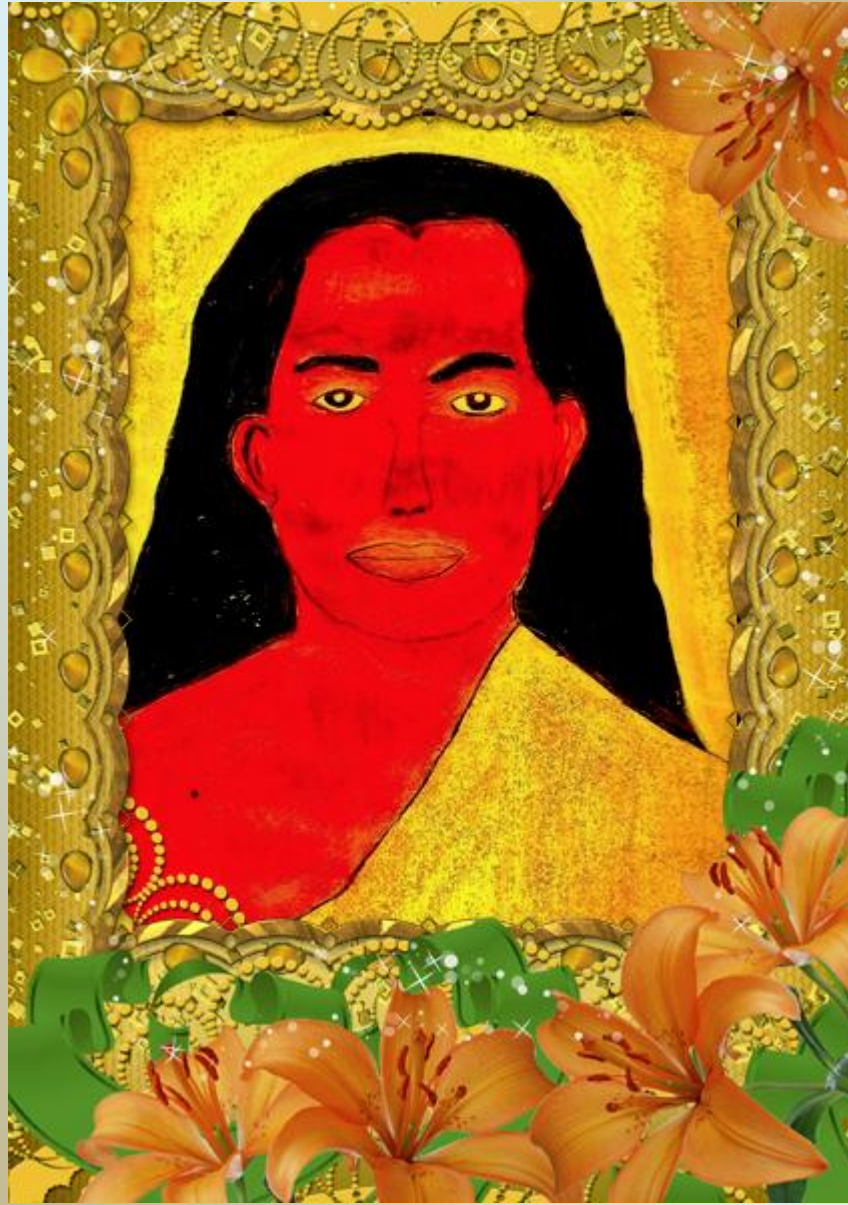


Haiku by Christopher Stewart

If there is any secret to this life I live, this
is it: the sound of what cannot be seen
sings within everything that can. & there is
nothing more to it than that.

living in the cosmic swirl,
going round and round,
singing my song,
Dancing my dance...

By martin Stompingelk



**Acrylic Painting on Sketch paper
of Mahavatar Babaji.**

Mahavatar Babaji is the name given to an Indian saint by Lahiri Mahasaya and several of his disciples who met Mahavatar Babaji between 1861 and 1935. Some of these meetings were described by Paramahansa Yogananda in his book Autobiography of a Yogi, including a first hand telling of Yogananda's own meeting with Mahavatar Babaji. Another first hand account was given by Sri Yukteswar Giri in his book The Holy Science. All of these accounts, along with additional meetings with Mahavatar Babaji, are described in various biographies of those mentioned by Yogananda.

By Pragathi Priyadev

Tarot Teacher To The Site



HERMOTIMUS



We at the Enchanted Forest are delighted and honoured to welcome Hermotimus to the post of Tarot Teacher to the Enchanted Forest. Hermotimus has been doing Professional Readings since 1975 (35 years) and has taught 5 tarot card reading classes in person (IRL) and 12 classes on line in the last 15 years.

He will also be available to answer questions and offer guidance in the Tarot Group

<http://enchantedforrest.ning.com/group/thelearningtarotandsharinggroup>

CLASSES WILL BE ON A WEEKLY BASIS

Katrina and the Negative leylines

By Shadow

Is the planet aligning itself with the NWO?

No. It has its own purpose on directing the storm at the Biloxi/Mobile coast. A couple of years ago I wrote about the Hot Spot grid. I described how the deep volcanoes like Yellowstone and Hawaii are energy portals to the core of the planet and that they create an irregular leyline grid. There are over seventy Hot Spots. The lower astral realms above the atmosphere feed parasitically from humanity and the earth itself.

Mapping the grid many years ago, I could see how the British Empire and other European powers had been fashioned from the lower astral realms. The lines of communications, command and control, circled the world even when it took months for a physical letter to be delivered. A negative astral psychic web created an empire upon which the sun never set. The negative leylines are aetheric pipelines drawing valued orgone elements from the earth to the realms beneath the Van Allen Belts in the same way petroleum pipelines feed the energy and manufacturing needs of our physical world.

In the same way that the Gulf coast at the mouth of the Mississippi is a nexus of physical pipelines, the Hot Spot connection between The Three Virgin's Volcano on Baja, and Bermuda is a nexus of aetheric pipelines. The energy in the waters of the great river is part of the orgone formula. Another part of the command and control is the enslavement of humanity as represented by the poor people in New Orleans.

Proper "Polarity and Gravity" in the human consciousness has "Polarity" vertical through the length of the body. This relates to the kundalini activation. Proper "Gravity" is a love field emanating from body horizontally. This is the "Cross" which Jesus taught. He instructed his disciples, if rejected from a town, take up your cross and wipe the dust off your feet. The cross is inside everyone. It is an equal armed, power of the plus cross, not the crucifixion's unequal armed cross of shame.

In about five percent of the people the cross is correctly aligned to the body. These are the people who genuinely love God and their fellow men and women. In another five percent the cross is reversed. Such a person is constantly hateful, psychopathically so.

The vast majority of humanity has fearfully rotated the cross ninety degrees so that "Gravity" is aligned to the backbone and "Polarity" is horizontal to the ground. They are weighed down by the concerns of physical life and have no understanding of spirituality. With their "Polarity" out in front of them they have "bowed down to mammon." They are constantly full of fear. They are constantly being sucked dry of their life energies by lower astral influences. They are easily controlled and are often in a semi-conscious state. They are people who have "rings in their noses" and whoever has a finger in the ring can lead people wherever they want to go. Our western "un"civilization is very adept at keeping the ring in the nose. Drugs, sex, music, war, TV, religion, etc. All of it is controlled from the parasites of the lower astral.

When I was originally taught this information by, David L. Livingstone during an Alpha and Omega Order Of Melchizedek "Love Lesson" March 1971, prior to the Amchitka H-Bomb tests in the Aleutians, I balked at the way the word "Gravity" was being used. I felt that Gravity should be the natural vertical alignment. That is the way that gravity was taught in university. David saw that I had fallen into that mental conundrum. He later explained that with proper "Polarity" the spine is activated and straight. There is a lightness to the step. When "Gravity" is in alignment to the backbone all the weight of the world is on one's shoulders. The back is bowed and eventually would become bent and sore. Studying Electro-gravity and levitation David had it correct. "Gravity" is ninety degrees to God Centered "Polarity" alignment. This is another incidence where textbooks are wrong.

Due to the densification of the aetheric ice upon which the hell-state realms are constructed the most stable real estate is above the Hot Spots. Densification happens when sufficient heavier elements are drawn out of the earth to cause the aetheric ice to lose buoyancy. This is like sitting on lake ice and scooping up lake bottom rocks through a hole in the ice and laying the rocks atop the ice. At some point the ice will break and the rocks will fall back to the bottom. Arrogant stupidity. This is a cycle which has been happening for ages. I go into this subject in articles on Aetheric Ice and it is also in the Oahspe. The largest aetheric cities are above the planet's Hot Spots. The aetheric city above Yellowstone covers much of Wyoming, Idaho and Montana.

The aetheric cities above Baja and Bermuda are large as well. If you are in Biloxi and you point one arm west and the other arm east horizontally, you are pointing at the two aetheric cities. They are both on the same tangent and sucking the life out of people, nature, the river and the earth. When people switch their polarity and gravity they are automatically part of the parasitic world system. Hurricane Katrina cut through those negative leylines disrupting the flow of the life-blood of the lower realms.

Louisiana, Mississippi and Alabama are impoverished physically, mentally and spiritually by distant parasites. When cotton was king in the south the real wealth of the crop was never seen in the Gulf states. The wealth was kept in the manufacturing centers in England and New England. With the discovery of petroleum and natural gas the wealth never stayed in the south. Likewise the floating casinos on the Mississippi Gulf pumped money out of state. Some went in taxes to Jackson but most of the money was removed from the area.

As the sucking of orgone out of New Orleans was so rampant psychic phenomena arose spontaneously. Much of it associated with black magic.

With the planned destruction of a cult center there is a great need for blood letting and the poor of New Orleans are the sacrificial lambs to the gods of mammon. This is to substitute for the temporary disruption of the diabolical parasitism with an even more evil blood feast.

Katrina did not kill many in New Orleans. The authorities are doing the killing. Katrina cut through the mind control hub of leylines near Biloxi, deliberately avoiding New Orleans. The "Polarity and Gravity" of the Gaia life energy working through the hurricane is correct. The wind and rain washed away the pipelines to the lower astral. The hurricane which was steered by the lower astral realms and HAARP was not steered at the crucial point of landfall. The higher powers steered it where the greatest good could be accomplished.

A huge wake-up will ensue. Lies will be revealed. More people will take up their "cross" and become spiritually aware. Parasitic practices will decrease. Picking up the true "cross" avoids the "cross of shame" or the "cross of martyrdom". With the true "cross" Jesus avoided capture at the overturning of the tables of the money-changers. With the true "cross" there is no martyrdom...there is no death.

If enough people lift up their consciousness and establish true polarity and gravity the lower astral parasites will be vanquished.

Zuerrnovahh-Starr Livingstone



Attribution of spiritual or supernatural significance

By Shadow

In the 1930s, two British dowsers, Captain F.L.M. Boothby and Reginald A. Smith, Keeper of the British and Roman Antiquities of the British Museum, linked the appearance of prehistoric sites such as earthworks, barrows and prehistoric temples, with underground streams and magnetic currents.[13][non-primary source needed]

Writing in the 1960s, Guy Underwood said that crossings of "negative" water lines and "positive" "aquastats" explain why certain sites were chosen as "holy" (in the sense of separate or different). He wrote that the siting and layout of ancient monuments in Europe, from Stonehenge to the medieval cathedrals and churches, appeared to be predicated on the geodetic topology[clarification needed]. All the major spiritual centers and sites he had studied were, he said, built over "blind springs", also called "knots", understood by dowsers as confluences of lines which take a spiral course, where water-wells are drilled.[14][non-primary source needed] Underwood credited Reginald A. Smith with the original discovery of this phenomenon in prehistoric temples and earthworks and for coining the term "blind spring", in a paper Smith read to the British Society of Dowsers in 1939, which he concluded with the statement: "The constant presence of underground water at the exact centres of these circles and earthworks is a significant feature easily verified by others. If this is allowed to be intentional, then the selection of sites for consecration by the Druids and their predecessors no longer appears arbitrary, but dictated largely by geological conditions".[15][non-primary source needed]

Underwood also wrote of the old churches he had dowsed, that "certain blind springs and water lines determine the exact position of the altar"(Underwood 1967, p165), and that animals typically give birth, create nests, or rest over blind springs, indicating to him that these spots emanated some form of "restorative property" (Underwood 1967, pp61–62).

In 2004, John Bruno Hare wrote:

Watkins never attributed any supernatural significance to leys; he believed that they were simply pathways that had been used for trade or ceremonial purposes, very ancient in origin, possibly dating back to the Neolithic, certainly pre-Roman. His obsession with leys was a natural outgrowth of his interest in landscape photography and love of the British countryside. He was an intensely rational person with an active intellect, and I think he would be a bit disappointed with some of the fringe aspects of ley lines today".



Earth Healing Group

Full moon gatherings

This group is for those wishing to share earth healing techniques and information about important events and who wish to add their energy to raising the vibration of the planet for the good of all



Come join us every full moon and we will all send healing Energy to Earth at one time a collective conscious activity to help Mother Earth and all those on it.

This group is for all people from all over the world to come "together" every MONTH to focus their energies for a common goal.

It is also a place to share with each other HEALING TECHNIQUES and INFORMATION about important events.

THIS GROUP IS HERE TO ACTIVELY MAKE A CHANGE AND RAISE THE VIBRATION OF THE PLANET FOR THE GOOD OF ALL



SUSUN WEEDS



MONTHLY CLASS ON THE FOREST

2011 schedule of Chats with Susun Weed

~ Third Monday of every month ~

Feb 14 - Mullein

March 21 - Comfrey

April 18 - Dandelion

May 23 - Violet

June 20 - Red Clover

July 18 - Wild Greens

August 15 - Wild Mushrooms

Sept 19 - Kelp / Seaweed

Oct 17 - Oatstraw

Nov 21 - Poke Root

Dec 19 - Burdock



Ten Top Tips for Avoiding the Flu

1. Wash your hands. (Rub briskly under hot running water for at least 30 seconds.)
2. Don't use antibacterial soaps. (They encourage the growth of antibiotic-resistant bacteria.)
3. Drink lots of fluids. (Especially hot herbal antibacterial teas such as sage, thyme, rosemary.)
4. Start your day with a cup of cool yogurt or hot miso soup. (Both encourage strong immunity.)
5. Make nourishing soups with the immune-enhancing roots astragalus and eleutherococcus.*
6. Spray your nasal passages with a saline solution or a xylitol rinse. (Kills viral particles.)
7. Be wary of diets that radically alter what you eat. (They tend to depress the immune system.)
8. Eat well-cooked leafy greens like kale, collards, and mustard greens. (Strengthens immunity.)
9. Add lots of arugula and watercress to your salad. (They're antiviral.)
10. Eat garlic. (Even powdered, even cooked.) Eat ginger. (Or drink it.)

If you do get the flu, elder berry (*Sambucus nigra*) tincture or syrup may shorten its stay.
Green blessings Susun S. Weed

ENCHANTED FOREST MERCHANDISE

ALL PROCEEDS RECEIVED FROM SALES GO TO SITE FEES



Several members have ordered items from our store and are very pleased with the quality of the merchandise. from the t-shirts, Hoodies, and even the Kool Coffee mugs so get yours now!!



**Zazzle
ships direct
to you!!!**

Be sure to check out our Enchanted Forest Store we have other items there Key chains, Bumper stickers, and you can choose your size when you order!! ☺

[HTTP://WWW.ZAZZLE.COM/ENCHANTED_FOREST](http://www.zazzle.com/enchanted_forest)

Prayers of love and gratitude to water at the nuclear plants in Fukushima, Japan!

By Martin Stompingelk

By the massive earthquakes of Magnitude 9 and surreal massive tsunamis, more than 10,000 people are still missing...even now... It has been 16 days already since the disaster happened. What makes it worse is that water at the reactors of Fukushima Nuclear Plants started to leak, and it's contaminating the ocean, air and water molecule of surrounding areas.

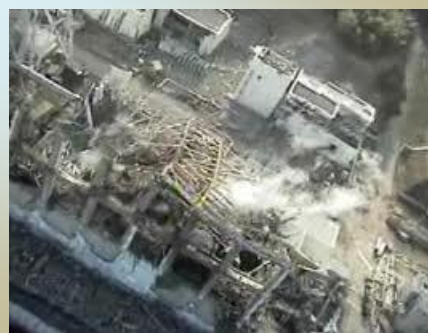
Human wisdom has not been able to do much to solve the problem, but we are only trying to cool down the anger of radioactive materials in the reactors by discharging water to them.

Is there really nothing else to do?

I think there is. During over twenty year research of hado measuring and water crystal photographic technology, I have been witnessing that water can turn positive when it receives pure vibration of human prayer no matter how far away it is.

Energy formula of Albert Einstein, $E=MC^2$ really means that Energy = number of people and the square of people's consciousness.

Now is the time to understand the true meaning. Let us all join the prayer ceremony as fellow citizens of the planet earth. I would like to ask all people, not just in Japan, but all around the world to please help us to find a way out the crisis of this planet!!



Note from Shadow: Keep sending Energy as often as you can. Every little bit helps as stated above..dont do it one time and stop. hoping it will fix it..just keep sending positive energys to any situation that needs it in this World.

My Perception on the different Paths and Purposes

By Shadow

I am writing this due to acknowledgement between different beliefs and paths I have been around. I listen to stories of ghost and spirits which I know to be true or possible being that I never leave out possibilities. And I have noticed that when a Lightworker ..they seemed to be turned off quicker than others..

One thing is understanding another path and the one thing I have learned with all these paths ..is some have similarities..they all have had a History of deceit and lied upon ,ridiculed, the Templars fell to the same fate as witches in the past.

And some of us have grown to know that our history books are not exactly correct on how Earth started how human race came about ..how we evolved so fast. In the Light workers past ..they were in great wars between the light and negative forces..and they lost to it.

So there is so much coincidentally similar between all these paths including the Native Americans..look how they were done..

And from my understanding or from what I have seen or hear mentioned from all the paths ..is we want the same thing..betterment for Earth and human kind..

But I am still not understanding the indifference in those who believe so much the same ..we are not as united as one as we should be..alot is getting better but are some to trying to separate themselves for whatever reason..when all have the same positive intents as mentioned above.

So why is there a separation or still judgement on those that are of another path as long as they still believe in the same intents.

I have sit and watched and listened and experienced things in others paths ..but I know a few as with myself believe in a bigger universal spectrum. But at times I find us hiding in the midst of the very ones that had been hiding themselves due to their path. So when I seen this thought I would ask why..

If I take and believe in someone and know its for positive intent and possibilities of different things happening from fore told stories..then why are the Universal path still hiding with in the hidden..

There is a discrimination at times and I don't understand why..some of us believe so dear of what we have come to learn about life and Universal incidents as those who have learned about their path through the earthly past..for some us it goes back further than most can fathom..

So for those that don't understand the Universal aspect..try to understand when you are being called upon a job or duty they will not all be the same ..it is part of us all being unique and indifferent but all for the same purpose in life.

There is much information out there now..proof of existence prior to what's been stated in history books civilizations that date back many many years before is said the cave man existed ..was highly intelligent life then with highly intelligent structures being built.

Many of us have our purposes and callings..cannot under estimate another just because they are not of your same belief pattern ..what you should notice is their intentions and for what purpose..we all work together for same causes As mentioned before.

So why seclude yourself from other ideas. When there are some listening to you and acknowledging what you have to say or offer or the intentions you have..

Although I do realize is many out there who have intentions but really don't follow through with them..only to passify themselves enough and are done..

We cant make changes working at it part time. you have to really want the Earth and all its inhabitants to survive and become a higher vibration for happiness and love and joy.

We don't just concentrate one time and its done..we have to keep working at it keep sending your prayers ..hopes..positive energies ..light candles,insence .all that and keep that momentum of intention going .

I fear that most give up due to not seeing a quick response to their trys..nothing is easy ..but I assure you all positive intentions are recognized wether you know it or not ..it changes the frequencies on Earth that surrounds Earth and effects all those on earth .

There is so much negative on earth ..they do not stop or will till they just cant anymore. so why should we stop and let the negative prevail..and it will not if just few of us..and it can be done.

Just want people realize sitting and thinking about wanting to help or do something not going to help much when it doesn't take much of your time to light a candle send a positive prayer to all in the world..

And as a Earth healer with a few others ..this is what we do.and we believe there is higher more advanced race that gives us our signs and our next missions or jobs to fill our calling from beyond Earth.

So as those who are in their other paths doing what they can which many do and are sincere you have other paths working right beside you for same reason although you don't understand them ..but they are..

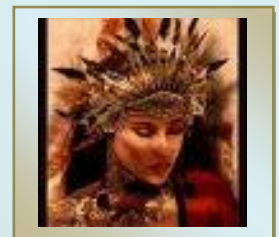
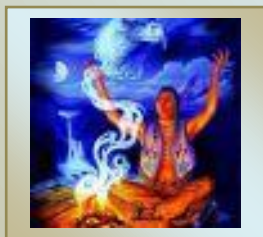
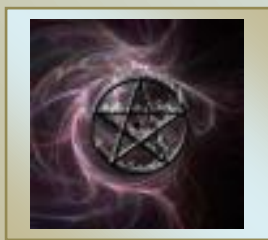
Some of us as Living guides or light workers have seen the hype and misused ways of the lightworkers thru others ideals ..which usually means money but no there are a few left ones out there and are gifted and channeled messages as you are messaged through your guides.

We all work together here and our intentions are to help mother earth and all its inhabitants every chance we get with all our energies we can utilize..

Thank you

Huggs and Peace

Shadow



The Trance of Negative Thinking

By Soaring Eagle spirit

"The power of positive thinking" is a phrase that probably makes you cringe when you hear it. It sounds Pollyannaish and naïve -- like those well-meaning clichés one sees printed on motivational posters hanging in the waiting room at the dentist's office, beneath a heartwarming photo of kittens or rainbows or some small, delicate flower triumphantly asserting its existence in spite of great obstacles and hardship. A greeting-card sentiment.

But substitute the word "negative" for "positive," and see how your attitude shifts. We don't have to look far to find evidence of the power of negative thinking. Its proof is all around us, sometimes to such an extent that we have trouble seeing how completely negativity dominates our minds. Simply open a newspaper or turn on the news on television and you will be bombarded by negative stories, negative images, negative thinking: you will see tragedies both large and small, an endless litany of angry faces and people doing horrible things to one another. As you absorb these messages, you will slowly, and perhaps almost imperceptibly, begin to worry and experience fear. At a somatic level of which you might not be consciously aware, you will experience physiological changes as you sit there: an elevated heart rate, and the release of stress hormones.

One might argue that the media is simply showing us how things are these days, and if negativity is their stock and trade, well, it's because the world really is full of suffering and tragedy and they're just telling it like it is. Buddhists (Tibetan Buddhists, anyway) often reinforce this prevailing atmosphere of negativism by asserting that we live in the "dark age," or even (more dramatically) "the darkest hour of the dark age." But here's a small reality check: the media have made negativity their stock and trade because they've discovered that it sells more papers, and draws in more viewers. People want to know what they should be afraid of, what they should worry about. In fact, most of us these days are addicted to negative thinking, and the more bad news and foreboding information is shoveled into our minds, the more deeply ingrained and natural our tendency towards negative thinking becomes. We are caught in a self-reinforcing, negative feedback loop.

For many folks today, it has finally come to seem that a negative, pessimistic, and cynical frame of mind is simply a realistic one, the only view to be held by mature people who know the ways of the world. Positive thinking, in the face of so much tragedy and degradation and so many ominous trends, seems more and more like a pitiful anachronism, one of those misplaced and outdated motivational slogans that makes us cringe when we hear it.

The problem with this view is that it lacks a basic awareness of how our thoughts shape our reality, and of the cause-and-effect relationship between the two. If the world appears to be going to hell in a hand-basket these days, well, perhaps that has something to do with the collective trance of negativity and fear in which we're all caught. As we think, so we become. The mind, once it's rolling in a particular direction, accumulates more and more evidence to support its basic outlook: the snowball effect. Eventually, as the mind's tendencies towards negative thinking become more and more deeply ingrained, that outlook hardens into a pair of dark glasses that one forgets one is even wearing, coloring and distorting every experience.

In the [Dhammapada](#), one of the earliest and best-known Buddhist scriptures from the Pali Canon, the Buddha taught that both positive and negative thinking have equal power to shape our reality:

All that we are is the result of what we have thought: it is founded on our thoughts, it is made up of our thoughts. If a man speaks or acts with an evil thought, pain follows him, as the wheel follows the foot of the ox that draws the carriage.

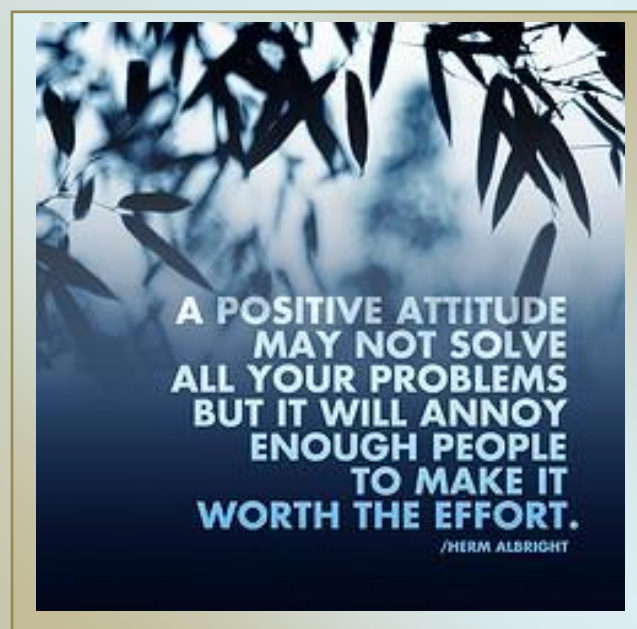
All that we are is the result of what we have thought: it is founded on our thoughts, it is made up of our thoughts. If a man speaks or acts with a pure thought, happiness follows him, like a shadow that never leaves him.

Our human experience is shot through with a curious paradox: our thoughts and emotions have no form or substance that we can point to or isolate (though they have correlates in the brain and body that science is edging closer to identifying). And yet our thoughts and emotions have, in many cases, overwhelming control over our experience and our actions. When a sequence of similar thoughts occurs in a chain, those thoughts become habits of thinking; they acquire a momentum whose force is difficult to resist or steer.

Habitual ways of thinking solidify and define how we see and interact with the world. They become what [Chogyam Trungpa](#) called "styles of imprisonment": prisons whose walls exist entirely in our minds. Thoughts create emotional ripples as well as storms that disturb our whole mental and physical ecosystem; they shape both how we speak and the things we choose to speak about; they color our dreams and what we dream about; they influence our relationships and the people with whom we have them. It is possible for us to fall, without much effort or awareness, utterly under the spell of what people in Twelve Step groups call "stinking thinking."

Yet how is it that something so ephemeral and ethereal as thought can have such a controlling impact on us? How can we be so thoroughly under the spell of something so ghostly and insubstantial? And if thinking is by nature so insubstantial, why do we find it so difficult, once we are under its spell, to change course?

by [Dennishunter](#)



Finding Answers Within

You Have All the Answers Within You

BY Spellcaster

When you realize that you always have the answers within yourself, you can stop searching outside of yourself.

Many of us seek the answers to life's questions by looking outside of ourselves and trying to glean advice from the people around us. But as each of us is unique, with our own personal histories, our own sense of right and wrong, and our own way of experiencing the world that defines our realities, looking to others for our answers is only partially helpful. The answers to our personal questions can be most often found by looking within. When you realize that you always have access to the part of you that always knows what you need and is meant to act as your inner compass, you can stop searching outside of yourself. If you can learn to hear, trust, and embrace the wisdom that lives within you, you will be able to confidently navigate your life.

Trusting your inner wisdom may be awkward at first, particularly if you grew up around people who taught you to look to others for answers. We each have exclusive access to our inner knowing. All we have to do is remember how to listen. Remember to be patient as you relearn how to hear, receive, and follow your own guidance. If you are unsure about whether following your inner wisdom will prove reliable, you may want to think of a time when you did trust your own knowing and everything worked out. Recall how the answers came to you, how they felt in your body as you considered them, and what happened when you acted upon this guidance. Now, recall a time when you didn't trust yourself and the results didn't work out as you had hoped. Trusting your own guidance can help you avoid going against what you instinctively know is right for you.

When you second guess yourself and go against what you know to be your truth, you can easily go off course because you are no longer following your inner compass. By looking inside yourself for the answers to your life's questions, you are consulting your best guide. Only you can know the how's and why's of your life. The answers that you seek can be found when you start answering your own questions.

SpellCaster~*~

Cinnamon and Honey Whoever thought?

By Martin Stomingelk

Honey is the only food on the planet that will not spoil or rot. It will do what some call turning to sugar. In reality honey is always honey. However, when left in a cool dark place for a long time it will do what I rather call "crystallizing" When this happens I loosen the lid, boil some water, and sit the honey container in the hot water, turn off the heat and let it liquefy. It is then as good as it ever was. Never boil honey or put it in a microwave. To do so will kill the enzymes in the honey.

Cinnamon and Honey

Bet the drug companies won't like this one getting around. Facts on Honey and Cinnamon: It is found that a mixture of honey and Cinnamon cures most diseases. Honey is produced in most of the countries of the world. Scientists of today also accept honey as a 'Ram Ban' (very effective) medicine for all kinds of diseases. Honey can be used without any side effects for any kind of diseases.

Today's science says that even though honey is sweet, if taken in the right dosage as a medicine, it does not harm diabetic patients. Weekly World News, a magazine in Canada, in its issue dated 17 January, 1995 has given the following list of diseases that can be cured by honey and cinnamon as researched by western scientists:

HEART DISEASES:

Make a paste of honey and cinnamon powder, apply on bread, instead of jelly and jam, and eat it regularly for breakfast. It reduces the cholesterol in the arteries and saves the patient from heart attack. Also, those who have already had an attack, if they do this process daily, they are kept miles away from the next attack.. Regular use of the above process relieves loss of breath and strengthens the heart beat. In America and Canada , various nursing homes have treated patients successfully and have found that as you age, the arteries and veins lose their flexibility and get clogged; honey and cinnamon revitalize the arteries and veins.

ARTHRITIS:

Arthritis patients may take daily, morning and night, one cup of hot water with two spoons of honey and one small teaspoon of cinnamon powder. If taken regularly even chronic arthritis can be cured. In a recent research conducted at the Copenhagen University, it was found that when the doctors treated their patients with a mixture of one tablespoon Honey and half teaspoon Cinnamon powder before breakfast, they found that within a week, out of the 200 people so treated, practically 73 patients were totally relieved of pain, and within a month, mostly all the patients who could not walk or move around because of arthritis started walking without pain.

BLADDER INFECTIONS:

Take two tablespoons of cinnamon powder and one teaspoon of honey in a glass of lukewarm water and drink it. It destroys the germs in the bladder..

CHOLESTEROL:

Two tablespoons of honey and three teaspoons of Cinnamon Powder mixed in 16 ounces of tea water, given to a cholesterol patient, was found to reduce the level of cholesterol in the blood by 10 percent within two hours As mentioned for arthritic patients, if taken three times a day, any chronic cholesterol is cured. According to information received in the said Journal, pure honey taken with food daily relieves complaints of cholesterol.

COLDS:

Those suffering from common or severe colds should take one tablespoon lukewarm honey with 1/4 spoon cinnamon powder daily for three days. This process will cure most chronic cough, cold, and clear the sinuses.

UPSET STOMACH:

Honey taken with cinnamon powder cures stomach ache and also clears stomach ulcers from the root.

GAS:

According to the studies done in India and Japan , it is revealed that if Honey is taken with cinnamon powder the stomach is relieved of gas.

IMMUNE SYSTEM:

Daily use of honey and cinnamon powder strengthens the immune system and protects the body from bacteria and viral attacks. Scientists have found that honey has various vitamins and iron in large amounts. Constant use of Honey strengthens the white blood corpuscles to fight bacterial and viral diseases.

INDIGESTION:

Cinnamon powder sprinkled on two tablespoons of honey taken before food relieves acidity and digests the heaviest of meals.

INFLUENZA:

A scientist in Spain has proved that honey contains a natural 'Ingredient' which kills the influenza germs and saves the patient from flu.

LONGEVITY:

Tea made with honey and cinnamon powder, when taken regularly, arrests the ravages of old age. Take four spoons of honey, one spoon of cinnamon powder, and three cups of water and boil to make like tea. Drink 1/4 cup, three to four times a day. It keeps the skin fresh and soft and arrests old age. Life spans also increase and even a 100 year old, starts performing the chores of a 20-year-old...

PIMPLES:

Three tablespoons of honey and one teaspoon of cinnamon powder paste. Apply this paste on the pimples before sleeping and wash it next morning with warm water. If done daily for two weeks, it removes pimples from the root

SKIN INFECTIONS:

Applying honey and cinnamon powder in equal parts on the affected parts cures eczema, ringworm and all types of skin infections.

HEARING LOSS:

Daily morning and night honey and cinnamon powder, taken in equal parts restores hearing. Remember when we were kids? We had toast with real butter and cinnamon sprinkled on it!

WEIGHT LOSS:

Daily in the morning one half hour before breakfast on an empty stomach, and at night before sleeping, drink honey and cinnamon powder boiled in one cup of water. If taken regularly, it reduces the weight of even the most obese person. Also, drinking this mixture regularly does not allow the fat to accumulate in the body even though the person may eat a high calorie diet.

CANCER:

Recent research in Japan and Australia has revealed that advanced cancer of the stomach and bones have been cured successfully. Patients suffering from these kinds of cancer should daily take one tablespoon of honey with one teaspoon of cinnamon powder for one month three times a day.

FATIGUE:

Recent studies have shown that the sugar content of honey is more helpful rather than being detrimental to the strength of the body. Senior citizens, who take honey and cinnamon powder in equal parts, are more alert and flexible. Dr. Milton, who has done research, says that a half tablespoon of honey taken in a glass of water and sprinkled with cinnamon powder, taken daily after brushing and in the afternoon at about 3:00 P.M. when the vitality of the body starts to decrease, increases the vitality of the body within a week.

BAD BREATH:

People of South America , first thing in the morning, gargle with one teaspoon of honey and cinnamon powder mixed in hot water, so their breath stays fresh throughout the day.

Leaving the Earth a Better Place

By Martin Stompingelk

A Legacy of Love

/Leaving the Earth a Better Place/

/From our first breath here to our very last, we will find infinite opportunities to influence our environment for the better./

We inherit this great planet from our parents and from the generations that came before. Then, in concert with the surrounding culture, our elders teach us how to care for the land and the sea, ourselves and each other. They model ways of being in relationship with every other expression of life on earth. But whether they act with care or carelessness, compassion or cruelty, generosity or greed, we have the ability to choose our own individual way of relating with the planet and her inhabitants. From our first breath here to our very last, we will find infinite opportunities to influence our environment for the better. We can decide now to act with intention in order to leave this amazing planet brighter and more beautiful than when we arrived.

If we enjoy environmental activism, we might feel moved to clean up beaches or to plant trees. But, we need not feel limited in our ability to contribute positively. There are many ways to leave a legacy of love. We might begin by radiating affirmative thoughts and feelings about how magnificent the earth truly is. We might create and tend a special garden, one that provides an abundance of food and herbs for ourselves and our loved ones. Or we might create a garden filled with sweet smelling flowers to uplift our hearts. We might even honor the earth simply by trying to be the best person we can be while we are here. Such good will can have a domino effect, inspiring others to contribute in their own way as well.

We spend our lifetimes being nourished and enlivened by the rain, sun, soil and wind. Our experience is blessed by other living beings, from plants to insects to birds and humans. We receive so much; giving back just naturally feels good. _When we live our lives with intention of leaving this temporary home a better place for generations to come, we are perhaps leaving behind the best gift of all. _

*



RECORD KEEPERS

By ~~ΣΧ3~~ ΒΡΕΕΕΖΕ ~~ΣΧ3~~

The record keeper crystal is recognized by a raised (or several raised) perfect triangles(s) located on one or more of the crystal faces. It should be noted that the quartz crystal is not the only crystal which is a record keeper; for example, there are a few rare ruby crystals, from the Republic of South Africa and from the Ruby Crystal Mine in India, which also exhibit this property.

The record keeper is a crystal within which wisdom is stored. When one properly attunes to this crystal, the ancient knowledge and profound secrets of the universe can be psychically retrieved. These crystals have been consciously and purposely programmed by the beings who created the energies which have culminated in the actualization of life on this plane, and by their direct descendants (e.g., the Atlanteans and Lemurians).

The purposes of accessing information from the record keeper are:

To provide one with information concerning the origin of the human race, the human soul, and all that exists or has existed in ones reality;

To facilitate the actualization of each person as a healing agent for humanity and the environment; and

To allow one to incorporate higher knowledge, wisdom, peace, and love into this and other planets.

Only those with open minds and pure hearts can access the information via attunement of the consciousness with the inner energies of the crystal.

The information provided by the record keeper enhances ones light, provides for a deeper access to personal wisdom, and promotes a greater peace to be used in this world.

The "three" of the triangles(s) located upon the face(s) of the crystal represents perfect balance achieved when the physical, mental, and emotional aspects of ones being is aligned with the love and purity of the highest spirituality. The triangular shape, of the "doors" which lead to the records, also symbolizes the third-eye, the creating, and the preservation of the state of perfection which serves as a pathway toward the enlightened state.

The information stored within the record keeper could be relevant or non-relevant to physical life on Earth. One must be open and willing to accept all information (even those concepts which one would judge as inconceivable) and must be capable (as we all are) of processing the information and applying it to this physical life.

The record keeper crystal is usually a personal meditation crystal. Meditation with the crystal is easily accomplished by placing a triangle upon the third-eye. Subsequent to this placement, close the eyes, still and open the mind, initiate circular breathing, relax, and be prepared to receive the information.

Another method of accessing information is to activate the triangle by rubbing the thumbnail across the triangle from top to bottom. This provides the opening. Closing-off the source is accomplished by the opposite manipulation.

If one is meant to experience a record keeper, the universe will provide. The record keeper which "comes" to you contains the information which will be beneficial to your personal development and /or will provide information which will assist you in helping another.



INVITE YOUR FRIENDS TO THE FOREST

To invite your friends to the Enchanted Forest go to the INVITE TAB at the top of the page. You can INVITE all your friends from either your hotmail, gmail or yahoo account by simply entering your email address and password from your messenger account then click IMPORT ADDRESS BOOK – this will list all your messenger account contacts select all the contacts you wish to INVITE then select SEND.

To INVITE your friends by EMAIL simply select enter EMAIL ADDRESS and enter the person you wish to INVITE emails address (Separate multiple addresses with commas). And SEND its that SIMPLE !!

Tell everyone about The Forest and help it GROW

If you have any problems with this or have any questions please contact any member of the team - who will be able to help you

Enchanted Forest Team

WHAT WOULD YOU LIKE TO SEE IN THE FOREST

This is your chance to let us know what you would like to see in the Forest - Lets here your ideas

All appreciated

THE ENCHANTED FOREST

THIS IS YOUR SITE !!!! HAVE A LOOK AROUND – IF YOU HAVE SOMETHING THAT YOU WISH TO SHARE WITH THE SITE ADD A BLOG OR JOIN A GROUP. IF YOU DONT SEE A GROUP THAT INTERESTS YOU WHY NOT START YOUR OWN. IF YOU NEED HELP WITH THIS OR JUST WANT IDEAS TALK TO EITHER SHADOW OR BREEZE AND WE CAN HELP YOU !!!!!!!!!

WE HOPE YOU HAVE FUN HERE AND SPEND SOME TIME WITH US IN THE ENCHANTED FOREST

AT THE ENCHANTED FOREST WE TRY AND MAINTAIN AN "OPEN POLICY" WITH THIS IS MIND WE ASK THAT ALL GROUPS CREATED BY MEMBERS ARE CREATED AND OPEN FOR ALL – NO GROUPS SHOULD BE SET TO PRIVATE. THANK YOU ALL FOR YOUR CONTINUED SUPPORT AND INPUT IN THE FOREST.



THE ENCHANTED FOREST TEAM



*Submit your articles
for
Enchanted Forest*



Magazine



Over 10.200 views since last March!!!

Articles from members and Team of the Forest

To submit your Articles, Poems, Quotes, or
Wise words of Wisdom

Hit the Magazine tab at top menu is a
green banner in the magazine group with
it's own address

<http://enchantedforrest.ning.com/group/enchantedmagazine>

**FROM THE
FOREST TEAM**

FREE CLASSES:
TAROT
CRAFT CLASS FOR BEGINNERS
EARTH HEALING GATHERING
HERBS WITH SUSUN WILD

BLOGS FORUMS CHAT AND
ALSO OUR FREE!! MONTHLY
MAGAZINE

[HTTP://ENCHANTEDFORREST.NING.COM](http://enchantedforrest.ning.com)

