

Karuna Reiki Symbols

[Zonar](#)

[Halu](#)

[Harth](#)

[Rama](#)

[Gnosa](#)

[Kriya](#)

[Iava](#)

[Shanty](#)

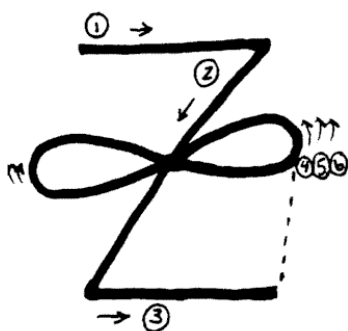
[Dumo](#)

[Usui Dai Ko Myo](#)

[Tibetan Fire Serpent](#)

[Om](#)

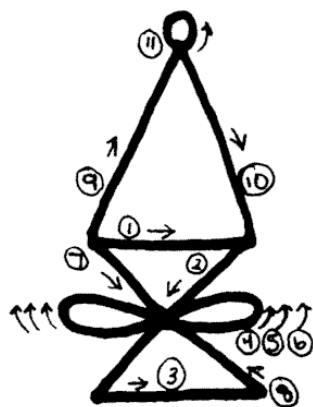
[Raku](#)



Zonar

Pronounced "Zoe Nar", this symbol means *"infinity" or eternity*. It is thought to work with our cells deep memories from both this life and the past. Zonar helps us release Karma, create clarity and open our hearts to compassion. Our awareness broadens while Zonar opens dimensions of the Universe. In Karuna Ki, Zonar connects us to loving compassionate energy.

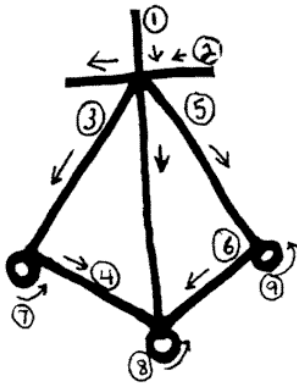
[Back to Top](#)



Halu

Halu, pronounced "Hay Lou" means *love, truth, and beauty*. It can also mean harmony. A deeper ray of healing, Halu includes the symbol of Zonar and heals at very deep karmic and causal levels. We use Halu to break negative patterns while restoring natural balance in our lives.

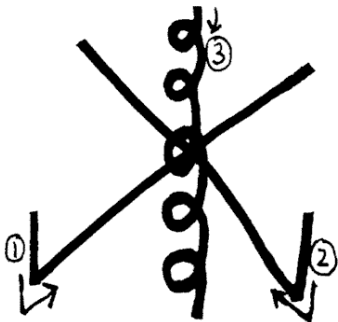
[Back to Top](#)



Harth

Harth is the main symbol in Karuna Ki Reiki. Like Halu, *it means love, truth, beauty, harmony and balance* and represents infinite compassion. Harth restores our love of life as it is used to heal issues of the heart.

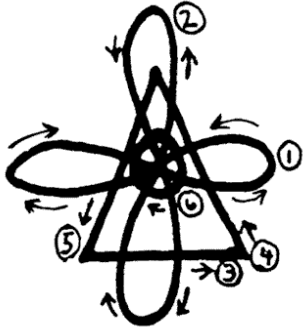
[Back to Top](#)



Rama

Rama, interchangeable with "Ram" or "God" *means abiding joy*. Rama connects us to Gaia, Earth energy, and clears our lower six chakras. Rama is used to clear negative energy, create determination and revive a person's chi.

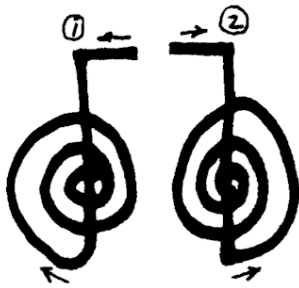
[Back to Top](#)



Gnosa

Pronounced, "Know Sa", the word comes from Gnosis *meaning mystical and spiritual knowledge acquired through feeling and prophecies from God*. Gnosa helps release our higher self to communicate more clearly in every day life. As it increases awareness it uplifts consciousness creating a direct connection with God. Like Harth, Gnosa is a primary symbol in Karuna Ki reiki.

[Back to Top](#)



Kriya

Pronounced "Kree Yah", it means *perfect balance and action*. The Law of Kriya is that of physical manifestation. Thought to help to heal the human race. Kriya balances energy, raises awareness and transforms thought into action.

[Back to Top](#)



Iava

Pronounced "Ee-Ah-Vah", *it balances the four elements*. When drawing the four small loops, say "Earth" with the first, "Water" with the second, "Wind or Air" with the third, and "Fire" with the fourth. Iava dispels illusion, conditionings and untruths. Iava aids in acting in the moment from a place of truth rather than reacting to circumstances. It also helps heal the Earth.

[Back to Top](#)



Shanty

Pronounced, "Shawn-Tee", it means peace. Shanti helps heal the past and make way for the present. We use Shanty to send peace to the past, free our attachments and heal. It releases fear, anger, hurt while soothing the aura.

[Back to Top](#)



Dumo

Pronounced, "do moe", it represents the swirling heat of the Kundalini. Also known as Tibetan Master Symbol or Tibetan Dai Ko Mio, it is the heat felt over the spine as the Kundalini awakens. This heat is the unification of the body and the mind. Dumo ignites this fire in the root chakra, pulls negative energy and disease from the body and releases it. Dumo heals on the deepest of levels.

[Back to Top](#)



Usui Dai Ko Myo

The Usui Master Symbol means "*Great Being of the Universe Shine on Me*". It can also mean "great shining light". It is a Zen expression for one's own true nature or Buddha-nature. Used at the highest level of healing, it expounds the thought that our spiritual body is a template for our physical body. Thus, when we are ill, the disease formed originally in our spiritual bodies. Dai Ko Myo cleanses these bodies and heals our spirit. In Karuna Ki, Usui Dai Ko Myo is used to represent the total connection to compassion of the divine source.

[Back to Top](#)



Tibetan Fire Serpent

This sleeping serpent awakens during an attunement. It opens the central channel of Kundalini fire. Depending on how it is used, it can either ground energy into the lower chakras or push energy upwards into the higher chakras without allowing it to release through the Crown chakra. The Fire Serpent connects and opens all chakras allowing balance and harmony.

[Back to Top](#)



Om

Pronounced "Ah uu mm", it is a Sanskrit symbol, *the sacred sound of the Universe*. It represents All of creation working together as one unit. Think "As above So below", "All opposites are identical in nature only different in degree". We are one and the understanding of such a concept- the integrity of All life leads us greater understanding, better choices, happier life. Om cleans, stabilizes and seals the aura. It brings in light, purifies, protects and connects us with God. It represents creation, preservation and destruction. Om opens the crown chakra and if drawn above the head opens a pathway to God and higher consciousness.

[Back to Top](#)



Raku

Raku is used in attunements, not in individual healings. It helps lift negative energy while taking the initiate into awareness. Raku activates the Hara Line, bringing Reiki energy in through the chi channels, and last settling in the Hara. It is used at the end of attunements in both Usui reiki and Karuna Ki reiki attunements. Last, it is used to separate the Master from the initiate after the attunement is complete.