

PUBLICLY
AVAILABLE
SPECIFICATION

**ISO/PAS
22574**

First edition
2007-02-01

Road vehicles — Brake linings frictions materials — Visual inspection

*Véhicules routiers — Matériaux de friction des garnitures de freins —
Inspection visuelle*



Reference number
ISO/PAS 22574:2007(E)

© ISO 2007

PDF disclaimer

This PDF file may contain embedded typefaces. In accordance with Adobe's licensing policy, this file may be printed or viewed but shall not be edited unless the typefaces which are embedded are licensed to and installed on the computer performing the editing. In downloading this file, parties accept therein the responsibility of not infringing Adobe's licensing policy. The ISO Central Secretariat accepts no liability in this area.

Adobe is a trademark of Adobe Systems Incorporated.

Details of the software products used to create this PDF file can be found in the General Info relative to the file; the PDF-creation parameters were optimized for printing. Every care has been taken to ensure that the file is suitable for use by ISO member bodies. In the unlikely event that a problem relating to it is found, please inform the Central Secretariat at the address given below.

© ISO 2007

All rights reserved. Unless otherwise specified, no part of this publication may be reproduced or utilized in any form or by any means, electronic or mechanical, including photocopying and microfilm, without permission in writing from either ISO at the address below or ISO's member body in the country of the requester.

ISO copyright office
Case postale 56 • CH-1211 Geneva 20
Tel. + 41 22 749 01 11
Fax + 41 22 749 09 47
E-mail copyright@iso.org
Web www.iso.org

Published in Switzerland

Contents

Page

Foreword.....	v
Introduction	vi
1 Scope	1
2 Characteristic features for friction materials	1
2.1 Characteristic features for disc brake pads.....	1
2.1.1 Gapping (between material and plate).....	1
2.1.2 Edge chipping	2
2.1.3 Splits	2
2.1.4 Minor splits.....	3
2.1.5 Plucked and indented spigots.....	3
2.1.6 Poor consolidated spigot holes	4
2.1.7 Excess adhesive on plate	4
2.1.8 Material flash on plate	5
2.1.9 Abrasive coating.....	5
2.1.10 Anti-noise coating runs.....	6
2.1.11 Skin crazing.....	6
2.1.12 Underlayer distribution	7
2.1.13 Marking	7
2.1.14 Unground material surface	8
2.1.15 Paint on friction material surface	8
2.1.16 Surface blisters	9
2.1.17 Surface indentations	9
2.1.18 Grinding marks on friction material surface.....	10
2.1.19 Higher porosity area	10
2.1.20 Poorly consolidated friction material	11
2.1.21 Surface contamination with foreign matter	11
2.1.22 Surface contamination with similar friction material	12
2.1.23 Friction surface structure	12
2.2 Characteristic features for drum brake linings.....	13
2.2.1 Chipped edges/corners.....	13
2.2.2 Edge splits.....	14
2.2.3 Drill hole chipping at lining ends	14
2.2.4 Drill hole burrs inside the surface.....	15
2.2.5 Drill hole burrs outside the surface	16
2.2.6 Cracks radiating from the rivet hole	16
2.2.7 Paint on surface – Lining for riveting and bonding	17
2.2.8 Surface cracks	17
2.2.9 Marking	18
2.2.10 Moulding skin on inside radius surface – Linings for bonding and riveting.....	18
2.2.11 Moulding skin on outside radius surface – linings for riveting or bonding	19
2.2.12 Surface blisters	19
2.2.13 Surface grind marks	20
2.2.14 Pitted surface (plucked surface)	20
2.2.15 Surface structure	21
2.2.16 Poor consolidation	21
2.2.17 Inside surface indentations	22
2.2.18 Outside surface indentations	22
2.2.19 Concentration of self contained ingredients unless typical of the formulation	23
2.2.20 High porosity area	24
2.2.21 Metal wire or plastic reinforcement	25
2.2.22 Foreign matter friction surface inclusion.....	26

2.3	Characteristics features for bonded lined shoes	26
2.3.1	Lining overhang on shoe platform edge	26
2.3.2	Faulty shoes	27
2.3.3	Restricted lever movement	27
2.3.4	Stencilled information	28
2.3.5	Excess adhesive exudation over shoe platform edges	28
2.3.6	Excess adhesive exudation from lining ends	29
2.3.7	Excess primer	29
2.3.8	Lining surface condition	30
2.3.9	Gaps between linings and shoe platform	32

Foreword

ISO (the International Organization for Standardization) is a worldwide federation of national standards bodies (ISO member bodies). The work of preparing International Standards is normally carried out through ISO technical committees. Each member body interested in a subject for which a technical committee has been established has the right to be represented on that committee. International organizations, governmental and non-governmental, in liaison with ISO, also take part in the work. ISO collaborates closely with the International Electrotechnical Commission (IEC) on all matters of electrotechnical standardization.

International Standards are drafted in accordance with the rules given in the ISO/IEC Directives, Part 2.

The main task of technical committees is to prepare International Standards. Draft International Standards adopted by the technical committees are circulated to the member bodies for voting. Publication as an International Standard requires approval by at least 75 % of the member bodies casting a vote.

In other circumstances, particularly when there is an urgent market requirement for such documents, a technical committee may decide to publish other types of normative document:

- an ISO Publicly Available Specification (ISO/PAS) represents an agreement between technical experts in an ISO working group and is accepted for publication if it is approved by more than 50 % of the members of the parent committee casting a vote;
- an ISO Technical Specification (ISO/TS) represents an agreement between the members of a technical committee and is accepted for publication if it is approved by 2/3 of the members of the committee casting a vote.

An ISO/PAS or ISO/TS is reviewed after three years in order to decide whether it will be confirmed for a further three years, revised to become an International Standard, or withdrawn. If the ISO/PAS or ISO/TS is confirmed, it is reviewed again after a further three years, at which time it must either be transformed into an International Standard or be withdrawn.

Attention is drawn to the possibility that some of the elements of this document may be the subject of patent rights. ISO shall not be held responsible for identifying any or all such patent rights.

ISO/PAS 22574 was prepared by Technical Committee ISO/TC 22, *Road vehicles*, Subcommittee SC 2, *Braking systems and equipment*.

Introduction

This Publicly Available Specification is based on the “Catalogue of characteristic features for friction materials” of the “FEMFM-Federation of European Manufacturers of Friction Materials” issued the first time in 1980. The FEMFM is a European organization of national associations formed by companies engaged in the development and production of friction materials of various product forms. The description of the characteristic features and their design was reviewed in 1996 when technological processes, especially safety aspects and the demands made by the brake and automobile industry, were given careful consideration.

Road vehicles — Brake linings frictions materials — Visual inspection

1 Scope

Friction linings are composite materials with complex structure. Due to their composition and their production process, visual appearance characteristics can occur which in a precisely defined design are to be regarded as specific to the product. This International Standard defines visual aspect for the identification and assessment of such product characteristics in quality assurance, as well as a basis for commercial and technical agreements. The sequence of the product characteristics represents no order of priority. The brake linings are inspected in the “as supplied” condition, meaning unused. In some characteristic features, there are differences between brake linings with an effective lining pad surface $< 120 \text{ cm}^2$ and $\geq 120 \text{ cm}^2$. The acceptance criteria within the International Standard do not allow any characteristics which could impair the function and performance of brake linings and are applied unless there are other agreements between the customer and the supplier.

2 Characteristic features for friction materials

2.1 Characteristic features for disc brake pads

2.1.1 Gapping (between material and plate)

The gap shown in Figure 1 is not acceptable.

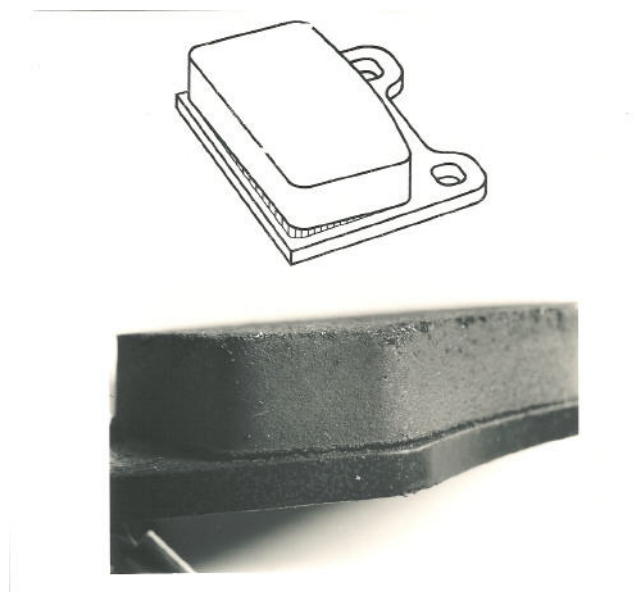


Figure 1 — Gapping (between material and plate)

2.1.2 Edge chipping

In the case of a disc brake pad with a surface less than 120 cm² a maximum of 1 % of the edge may chip.

In the case of a disc brake pad with a surface equal or more than 120 cm² a maximum of 0,5 % of the edge may chip.

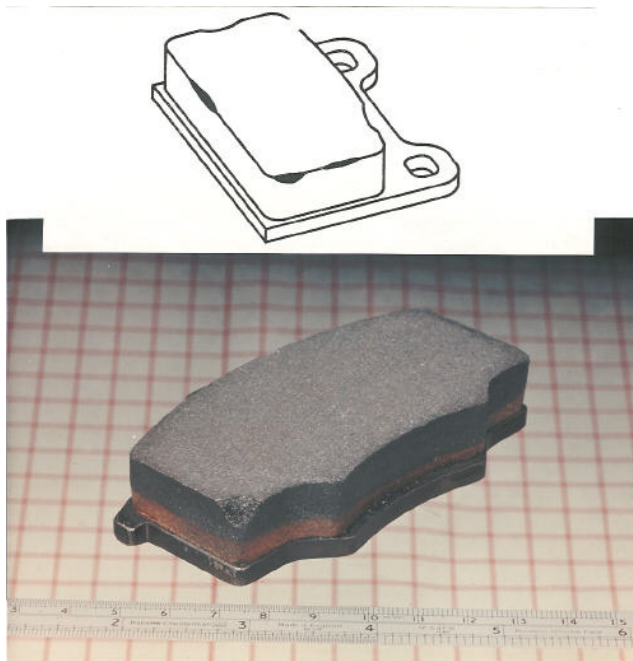


Figure 2 — Edge chipping

2.1.3 Splits

Splits having a length of more than 30 mm or more than 10 mm on corners or deeper than 1,5 mm shall not be accepted (see Figure 3).

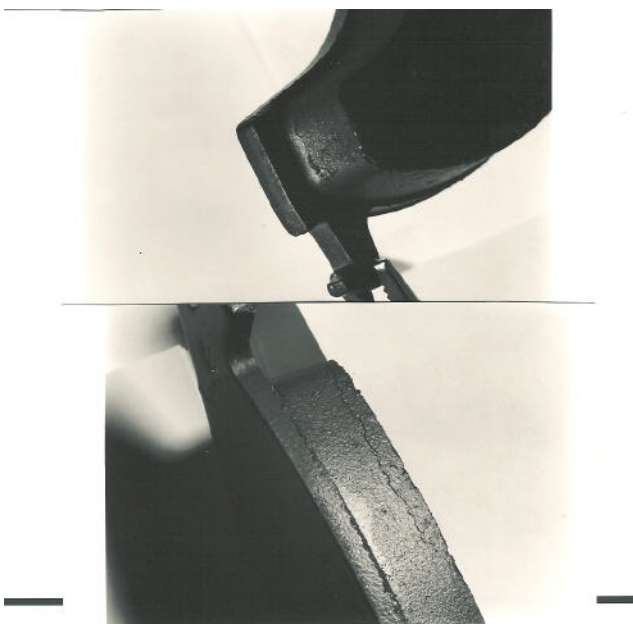


Figure 3 — Splits

2.1.4 Minor splits

Splits having a length of less than 30 mm or less than 10 mm on corners or with a depth less than 1,5 mm may be accepted (see Figure 4).

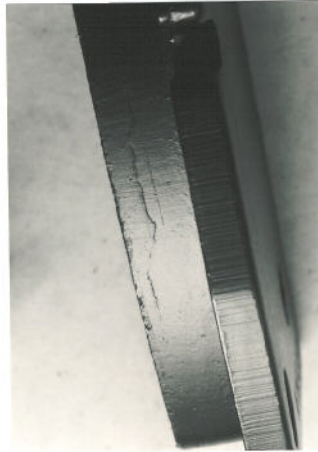


Figure 4 — Minor splits

2.1.5 Plucked and indented spigots

The disc brake pad shown in Figure 5 is acceptable on each spigot up to 50 % of area and 0,5 mm deep.

NOTE This definition also applies where spigots have been physically indented in the pad design.



Figure 5 — Plucked and indented spigots

2.1.6 Poor consolidated spigot holes

The disc brake pad shown in Figure 6 is acceptable if only one spigot is affected with up to 20 % of the volume being low density. This definition also applies where spigots have been physically indented in the pad design.



Figure 6 — Poor consolidated spigot holes

2.1.7 Excess adhesive on plate

Excess adhesive on plate is acceptable provided the fitment of the part is not affected. (See Figure 5.)

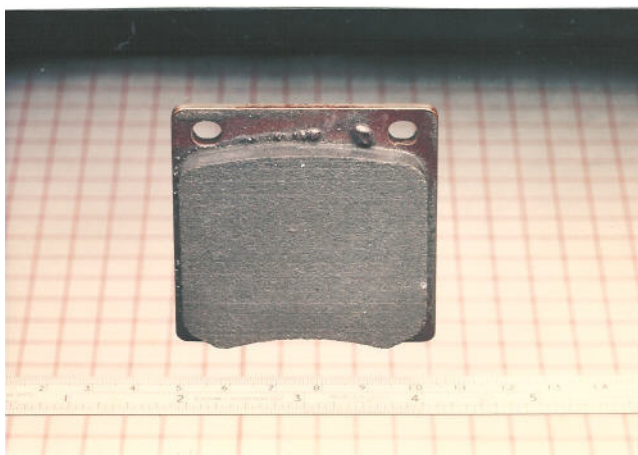


Figure 7 — Excess adhesive on the plate

2.1.8 Material flash on plate

A material flash on plate is acceptable up to 1mm thick outside functional zones. Flash shall be secured to back plate. (See Figure 8.)



Figure 8 — Material flash on plate

2.1.9 Abrasive coating

The disc brake pad is acceptable if at least 90 % of the surface is coated. (See Figure 9.)

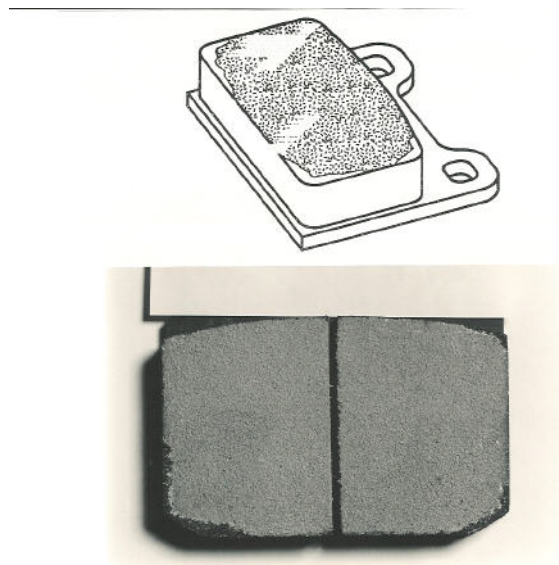


Figure 9 — Abrasive coating

2.1.10 Anti-noise coating runs

The anti-noise coating runs is acceptable provided fitment of part is not affected. (See Figure 10.)

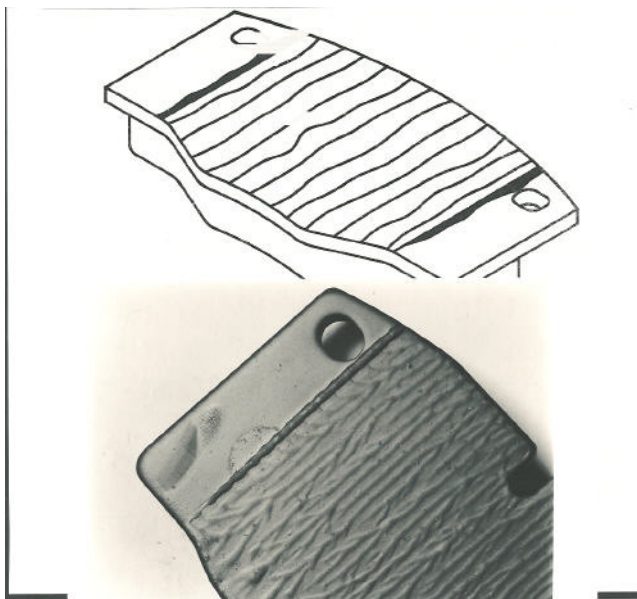


Figure 10 — Anti-noise coating runs

2.1.11 Skin crazing

Skin crazing as shown in Figure 11 is acceptable.

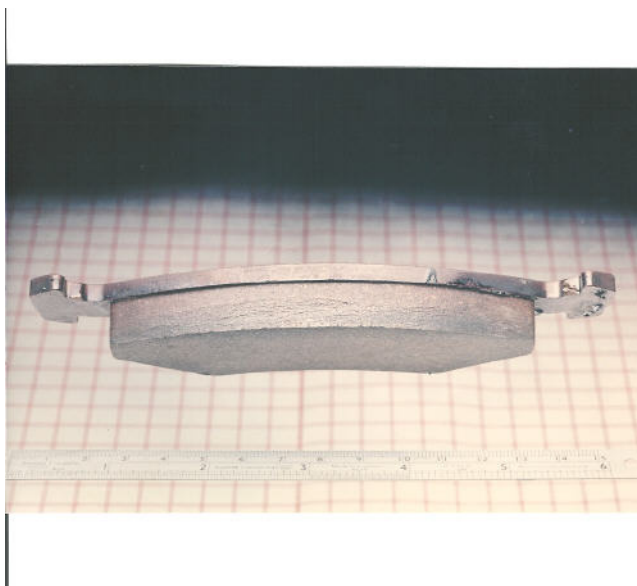


Figure 11 — Skin crazing

2.1.12 Underlayer distribution

Presence of underlayer is acceptable on pad surface up to 2 % of area, if the distribution is according to the specification. (See Figure 12.)

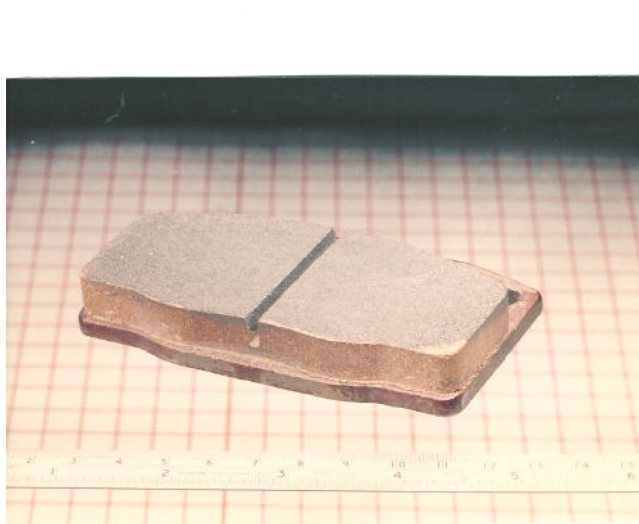


Figure 12 — Under-layer distribution

2.1.13 Marking

The marking shall be clear and legible.



Figure 13 — Marking

2.1.14 Unground material surface

An unground material surface equal or less than 10 % of the area is acceptable provided flatness and parallelism tolerances are not exceeded. (See Figure 14.)

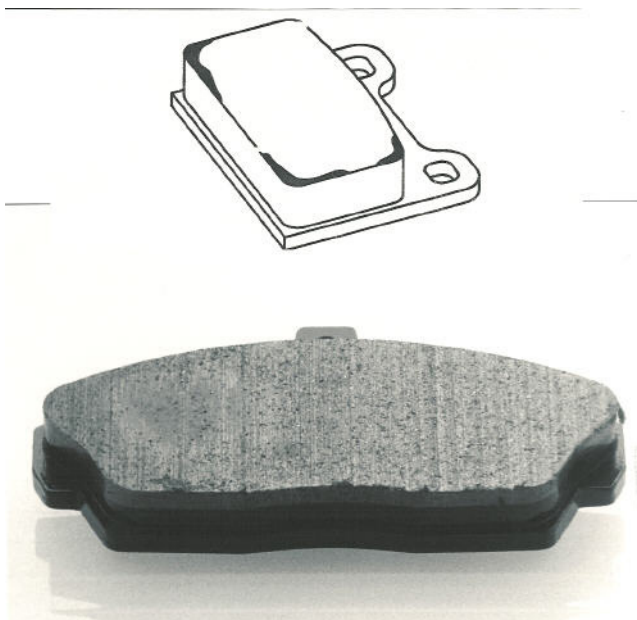


Figure 14 — Unground material surface

2.1.15 Paint on friction material surface

Paint on friction material surface is acceptable up to 10 % of the surface area. (See Figure 15.)

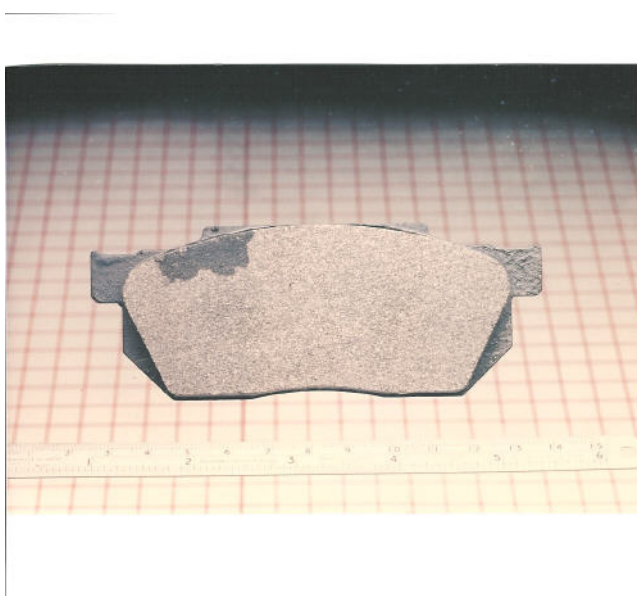


Figure 15 — Paint on friction material surface

2.1.16 Surface blisters

Surface blisters are acceptable if no surface lift is detectable. (See Figure 16.)



Figure 16 — Surface blisters

2.1.17 Surface indentations

Surface indentations are acceptable up to 2 % of the surface in total, but a single indentation shall not exceed 1 % of the material surface; (See Figure 17.)

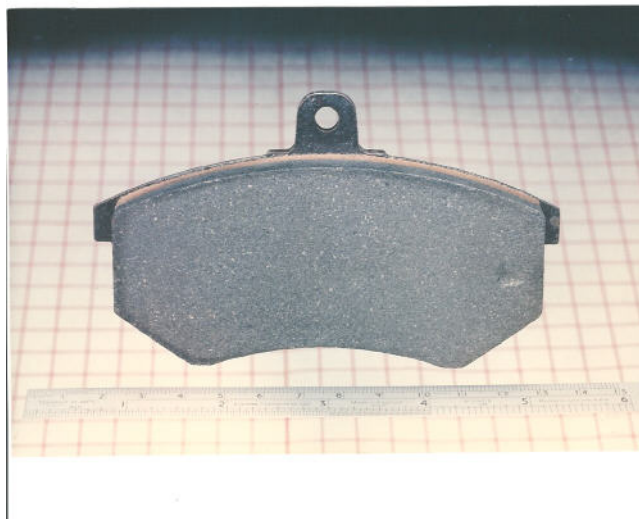


Figure 17 — Surface indentations

2.1.18 Grinding marks on friction material surface

Grinding marks on friction material surface are acceptable. (See Figure 18.)

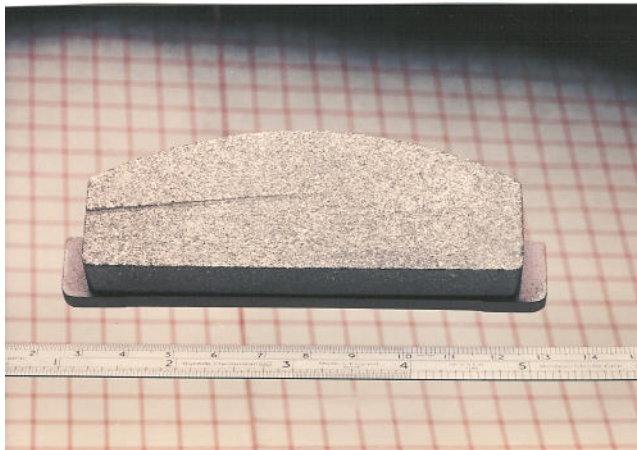


Figure 18 — Grinding marks on friction material surface

2.1.19 Higher porosity area

In the case of an effective material surface of less than 120 cm² a maximum of 5 % surface area with a higher porosity is acceptable, provided the material contours are not affected.

The percentage of allowable higher porosity shall be equal or less than 2 % in the case of an effective material surface equal or more than 120 cm². (See Figure 19.)

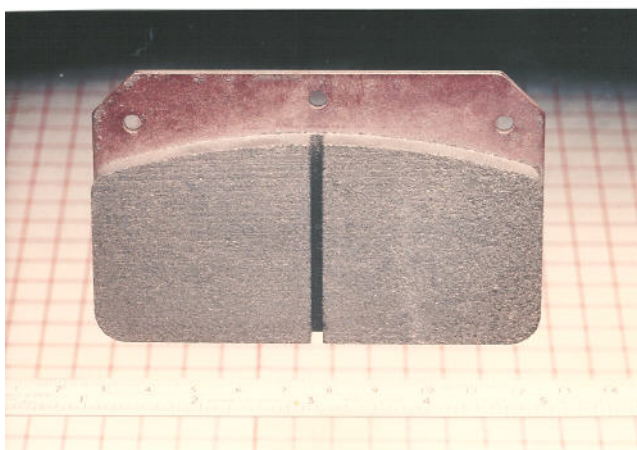


Figure 19 — Higher porosity area

2.1.20 Poorly consolidated friction material

In the case of an effective material surface of less than 120 cm² a maximum of 1 % surface area with poorly consolidated friction material is acceptable.

The percentage of poor consolidation shall be equal or less than 0,5 % in the case of an effective lining surface equal or more than 120 cm². (See Figure 20.)

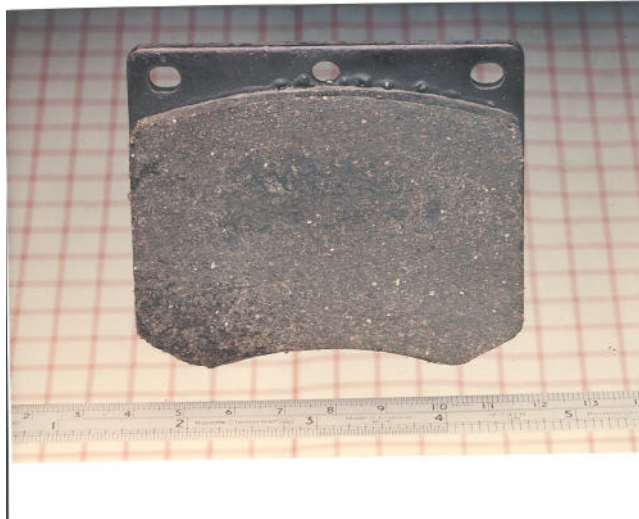


Figure 20 — Poorly consolidated friction material

2.1.21 Surface contamination with foreign matter

Such a contamination is not acceptable. (See Figure 21.)

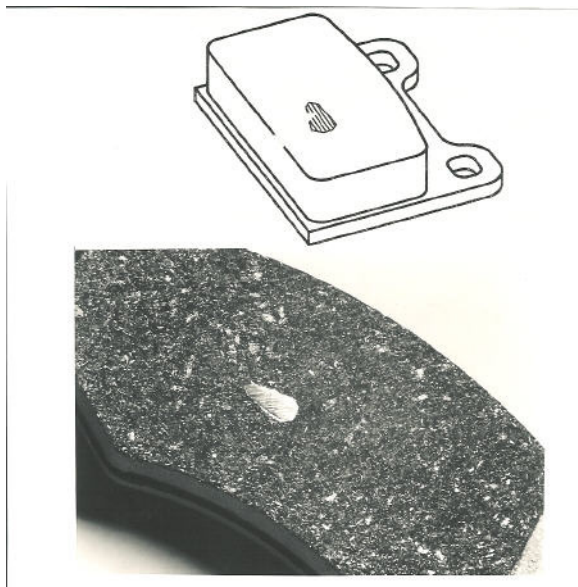


Figure 21 — Surface contamination foreign matter

2.1.22 Surface contamination with similar friction material

Spots on friction material with a surface equal or less than 1 % of the total surface are acceptable.

Spots on friction material with a surface equal or less than 2 % of the total surface are acceptable, only if the friction properties are not affected.

2.1.23 Friction surface structure

In the case of an effective material surface of less than 120 cm² the concentration of self contained ingredients is acceptable up to 5 % of the surface area but not continuous.

In the case of an effective material surface equal or more than 120 cm² the concentration of self contained ingredients is acceptable up to 3 % of the surface area but not continuous. (See Figure 22.)

Non homogenous appearance is accepted for special qualities including surface plucking. (See Figure 23.)



Figure 22 — Friction surface structure

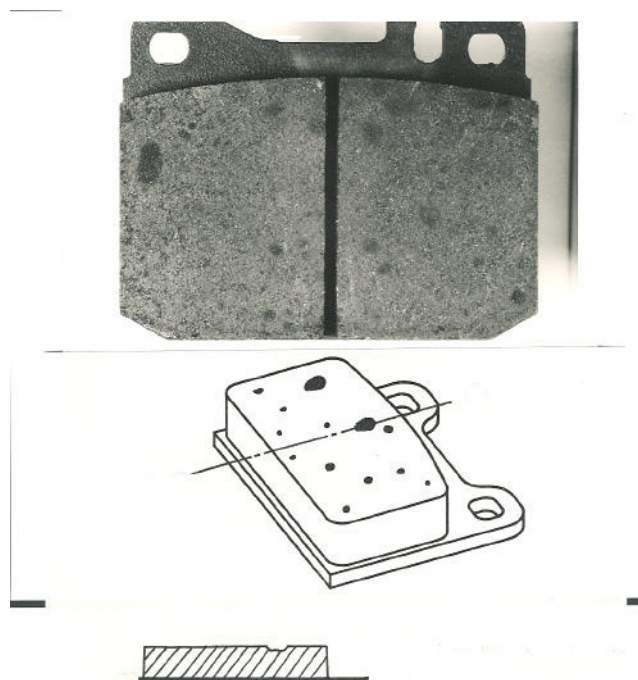


Figure 23

2.2 Characteristic features for drum brake linings

2.2.1 Chipped edges/corners

In the case of a lining surface of less than 120 cm² chipped edges/corners are acceptable up to 10 mm² and half the lining thickness. No more than 2 are allowed per lining. (See Figure 24.)

In the case of a lining surface equal or more than 120 mm² chipped edges/ corners are acceptable up to 20 mm² and half the lining thickness. No more than 2 are allowed per lining. (See Figure 25.)

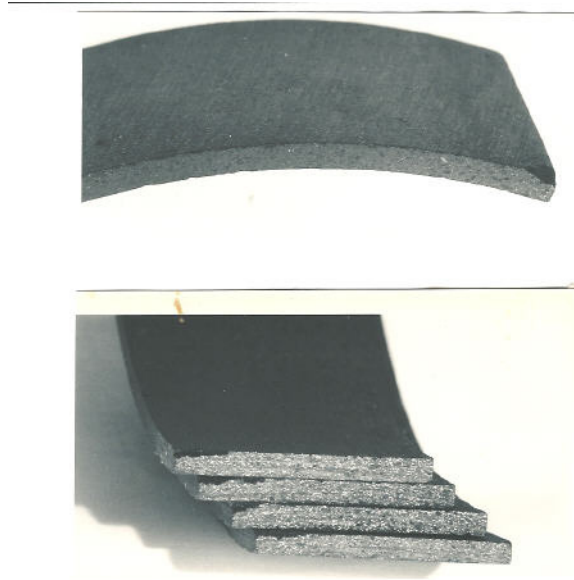


Figure 24 — Chipped edges/corners on linings < 120 mm²

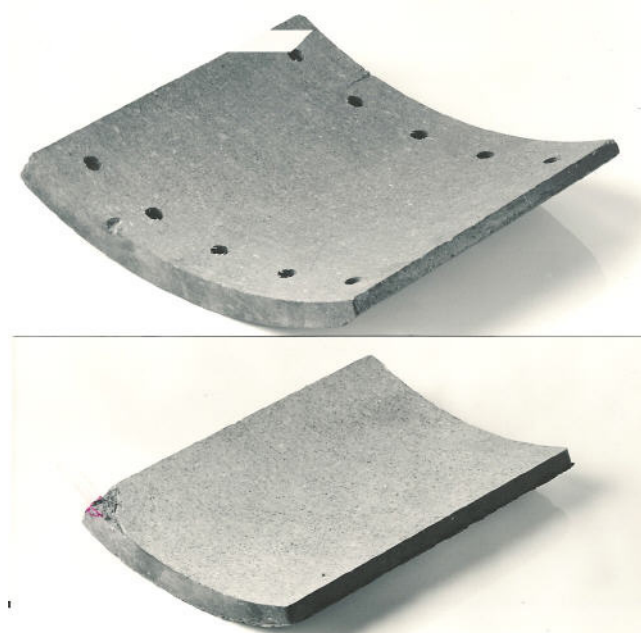


Figure 25 — Chipped edges/ corners \geq 120 mm²

2.2.2 Edge splits

Edge splits are not acceptable. (See Figure 26.)

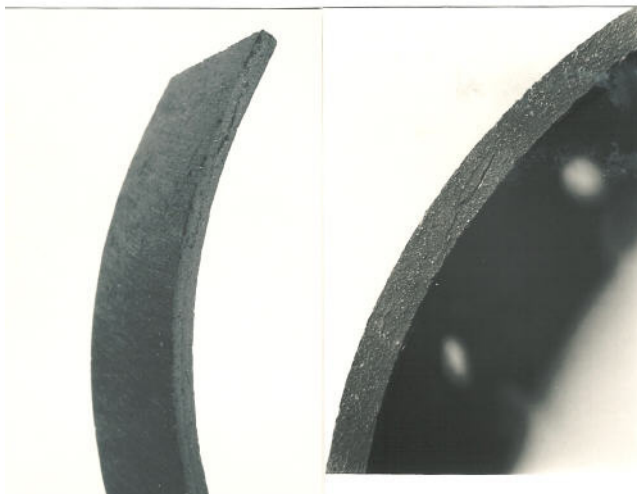


Figure 26 — Edge splits

2.2.3 Drill hole chipping at lining ends

The lining shown in Figure 27 is not acceptable.

The lining shown in Figure 28 is acceptable if one hole only is concerned.



Figure 27 — Drill hole chipping at lining ends



Figure 28 — Drill hole chipping at lining ends

2.2.4 Drill hole burrs inside the surface

Drill hole burrs on the inside the surface are not acceptable. (See Figure 29.)



Figure 29 — Drill hole burrs inside the surface

2.2.5 Drill hole burrs outside the surface

Drill hole burrs outside the surface are acceptable up to a height of 1 mm. (See Figure 30.)



Figure 30 — Drill hole burrs outside the surface

2.2.6 Cracks radiating from the rivet hole

Cracks radiating from the rivet hole are not acceptable. (See Figure 31.)

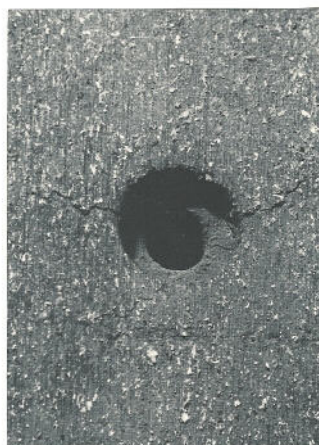


Figure 31 — Cracks radiating from the rivet hole

2.2.7 Paint on surface – Lining for riveting and bonding

Paint on surface is acceptable up to 5 % of the area on both inside and outside surfaces, paint runs are not acceptable. (See Figure 32.)

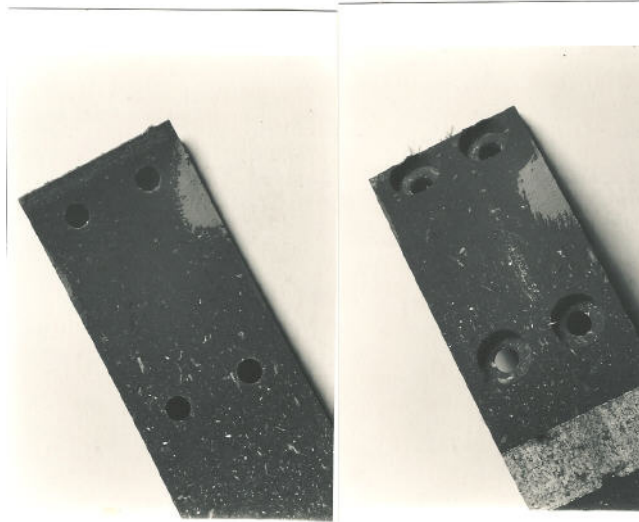


Figure 32 — Paint on surface

2.2.8 Surface cracks

Cracks are acceptable up to 25 % of the lining width but not longer than 30 mm, up to 0,2 mm deep. They are not acceptable across full lining width independent of depth. (See Figure 33.)

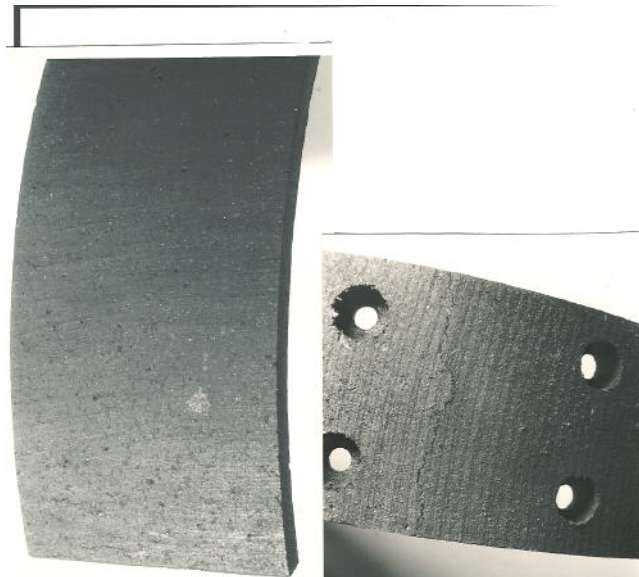


Figure 33 — Surface cracks

2.2.9 Marking

Marking shall be legible. (See Figure 34.)



Figure 34 — Marking

2.2.10 Moulding skin on inside radius surface – Linings for bonding and riveting

Where inside ground finish is specified for linings for bonding, up to 3 % of surface are acceptable provided the unground area is not at the lining ends and dimensional specifications are maintained.

Where inside ground finish is specified for linings for riveting, up to 10 % of surface are acceptable provided the unground area is not at the lining ends and dimensional specifications are maintained. (See Figure 35.)

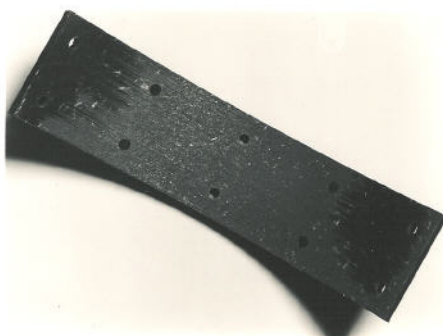


Figure 35 — Moulding skin on inside radius surface

2.2.11 Moulding skin on outside radius surface – linings for riveting or bonding

Moulded skin is acceptable up to 3 % of surface area provided dimensional specifications are maintained. (See Figure 36.)



Figure 36 — Moulding skin on outside radius surface

2.2.12 Surface blisters

Surface blisters are not acceptable (See Figure 37.)

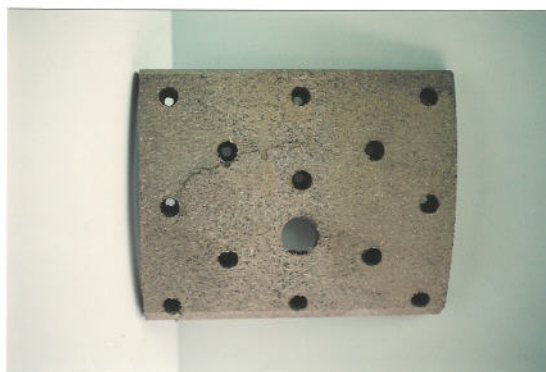


Figure 37 — Surface blisters

2.2.13 Surface grind marks

Surface grind marks are acceptable as long as dimensional specifications are maintained. (See Figure 38.)

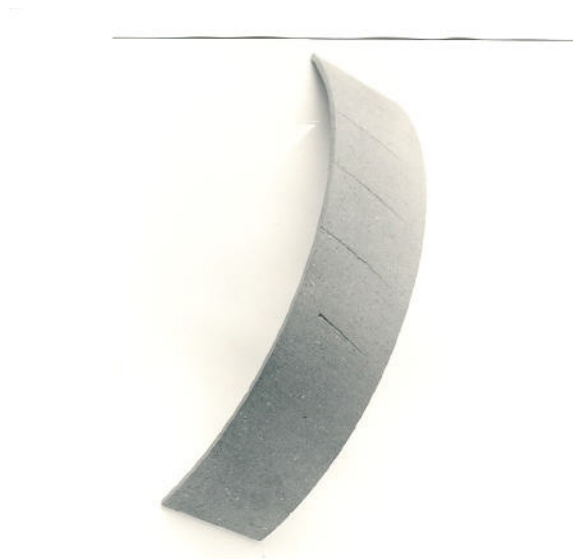


Figure 38 — Surface grind marks

2.2.14 Pitted surface (plucked surface)

Pitted surface which is typical of certain materials is acceptable (See Figure 39.)



Figure 39 — Pitted surface

2.2.15 Surface structure

In case of surface contamination by self contained ingredients (poor distribution) i.e. unopened fibres the lining is acceptable if the contamination equals or is less than 2 % of the friction side area and if the contamination equals or is less than 4 % of the non friction side area. (See Figure 40.)

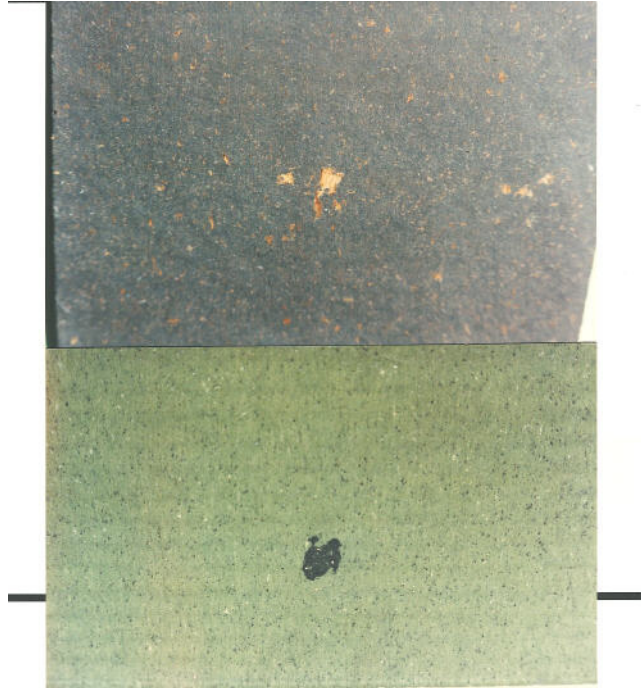


Figure 40 — Surface structure

2.2.16 Poor consolidation

The poor consolidation as shown in Figure 41 is not acceptable.

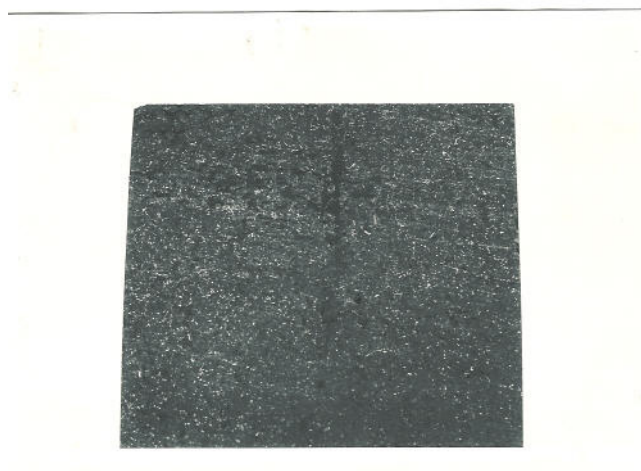


Figure 41 — Poor consolidation

2.2.17 Inside surface indentations

In the case of an effective lining surface of less than 120 cm² inside surface indentations are acceptable up to 30 mm² and 1 mm deep. No more than 2 is allowed and each shall be more than 5 mm from a drill hole.

In the case of an effective lining surface equal or more than 120 cm² inside surface indentations are acceptable up to 30 mm² and 1 mm deep. No more than 2 are allowed and each shall be more than 10 mm from a drill hole. (See Figure 42.)



Figure 42 — Inside surface indentations

2.2.18 Outside surface indentations

2.2.18.1 Linings ≥ 120 cm²

Outside surface indentations are acceptable up to 30 mm² and 1 mm deep. No more than 2 are allowed. (See Figure 43.)

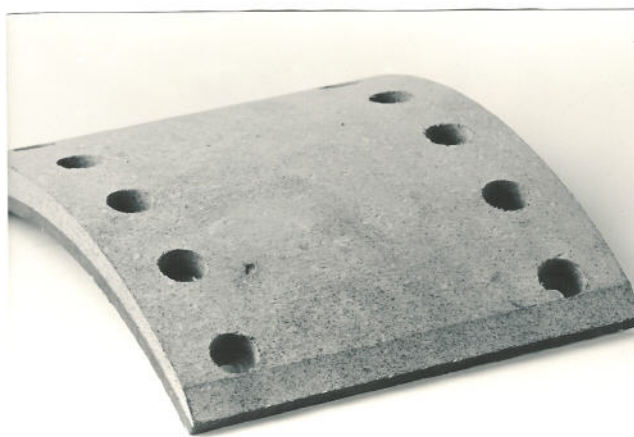


Figure 43 — Outside surface indentations – linings ≥ 120 cm²

2.2.18.2 Linings < 120 cm²

Outside surface indentations are acceptable up to 20 mm² and 1 mm deep. No more than 2 are allowed. (See Figure 44.)

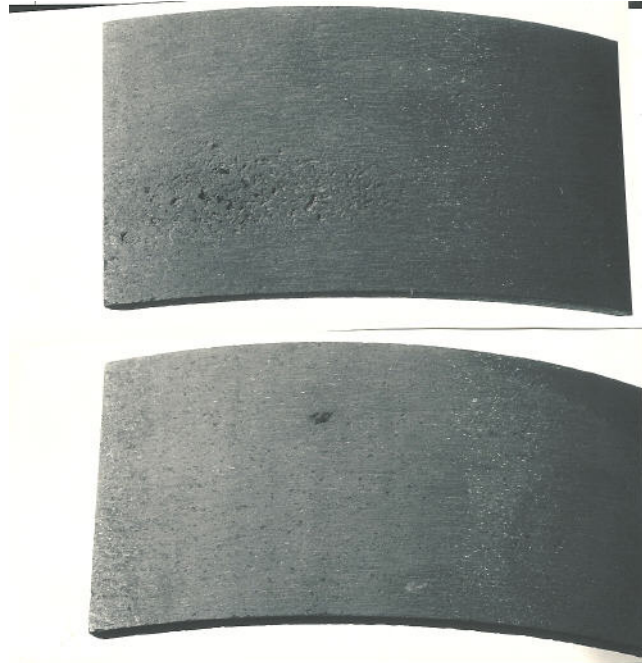


Figure 44 — Outside surface indentations - lining < 120 cm²

2.2.19 Concentration of self contained ingredients unless typical of the formulation

In the outside radius a maximum of 1 % of the surface is acceptable, but each concentration area to be a maximum area of 25 mm². (See Figure 45.)



Figure 45 — Concentration of self contained ingredients (Outside radius)

In the inside radius a maximum of 2 % of the surface is acceptable, each to be a maximum area of 50 mm².
(See Figure 46.)



Figure 46 — Concentration of self contained ingredients (Inside radius)

2.2.20 High porosity area

A high porosity area is acceptable provided the overall density of linings is specified and the profile is not affected. (See Figure 47.)



Figure 47 — High porosity area

2.2.21 Metal wire or plastic reinforcement

2.2.21.1 Showing on the inside surface

This is acceptable. (See Figure 48.)

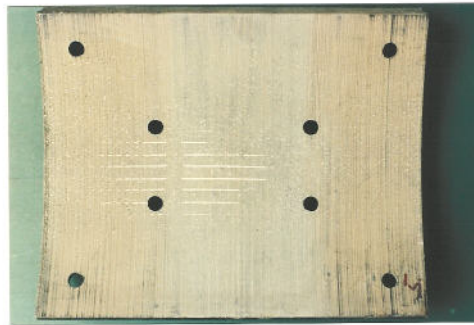


Figure 48 — Inside surface

2.2.21.2 Showing in rivet hole

Plastic reinforcement is acceptable.

Metal reinforcement is not acceptable.

(See Figure 49.)

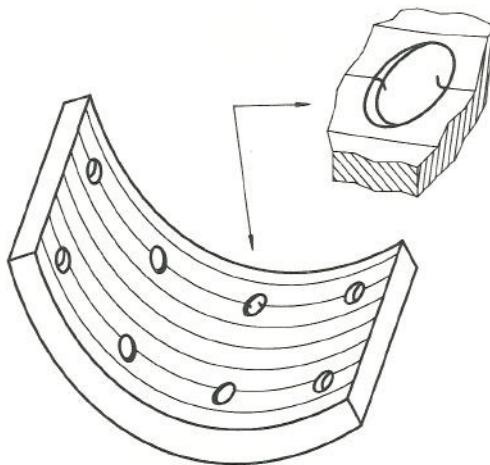


Figure 49 — Rivet hole

2.2.22 Foreign matter friction surface inclusion

Foreign matter friction surface inclusion is not acceptable, but for inclusions of similar friction material it may be accepted as follows (see Figure 50):

- in the case of a lining surface of less than 120 cm² an inclusion of a surface of a maximum of 25 mm² is acceptable;
- in the case of a lining surface of 120 cm² or more an inclusion of a surface of a maximum of 50 mm² is acceptable.



Figure 50 — Inclusions

2.3 Characteristics features for bonded lined shoes

2.3.1 Lining overhang on shoe platform edge

A lining overhang on shoe platform edge is acceptable up to a maximum of 1 mm over whole lining length on one edge only (unless otherwise stated in the specification). (See Figure 51.)

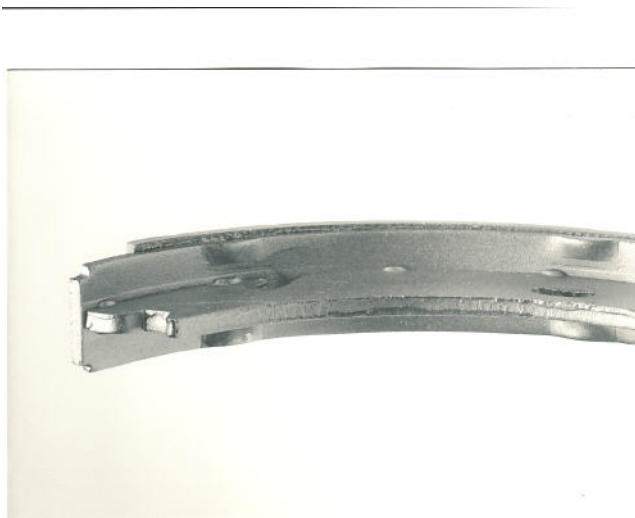


Figure 51 — Lining overhang on shoe platform edge

2.3.2 Faulty shoes

Faulty shoes damaged in bonding process are not acceptable unless of a minor nature not affecting fitment. (See Figure 52.)

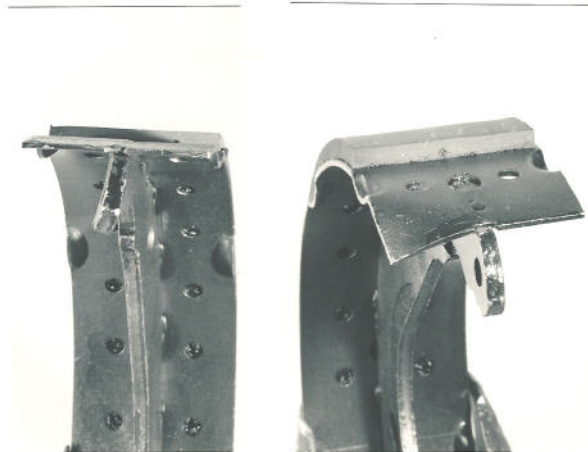


Figure 52 — Faulty shoes

2.3.3 Restricted lever movement

A restricted lever movement is not acceptable. It shall not be restricted by excess primer or incorrect riveting. (See Figure 53.)

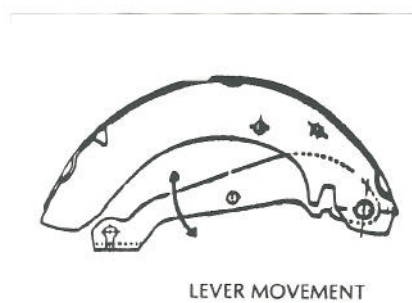


Figure 53 — Restricted lever movement

2.3.4 Stencilled information

Lining edge and shoe web marking shall be clear. (See Figure 54.)

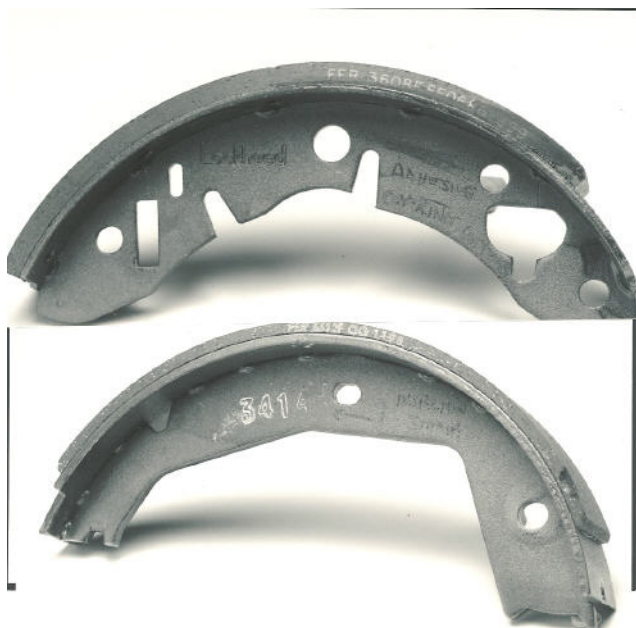


Figure 54 — Stencilled information

2.3.5 Excess adhesive exudation over shoe platform edges

A excess of adhesive exudation is acceptable up to 1,5 mm overhang on either edge of shoe platform. (See Figure 55.)



Figure 55 — Excess adhesive exudation – shoe platform edges

2.3.6 Excess adhesive exudation from lining ends

An excess adhesive exudation from lining ends is acceptable. (See Figure 56.)



Figure 56 — Excess adhesive exudation – lining ends

2.3.7 Excess primer

The excess primer, e.g. in web location holes and abutment areas is acceptable provided the fitment and the performances are not affected. (See Figure 57.)



Figure 57 — Excess primer

2.3.8 Lining surface condition

2.3.8.1 Rigid material ground on the shoe — Unground areas

An unground area is acceptable if it is 10 % or less of the lining surface area with a depth of 0,2 mm or less. (See Figure 58.)

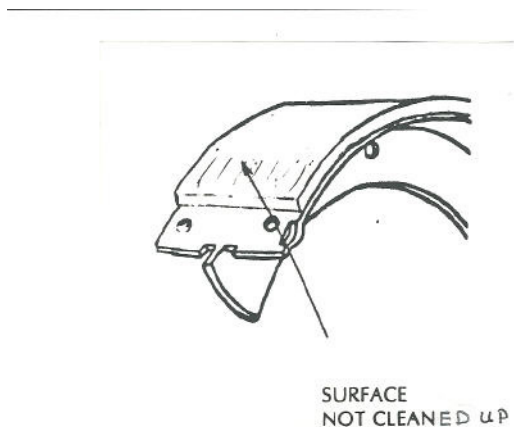


Figure 58 — Lining surface condition

2.3.8.2 Rigid material ground on the shoe — Grinding marks

Grinding marks are acceptable if they are 20 % or less of the lining surface area with a depth of 0,2 mm or less. (See Figure 59.)



Figure 59 — Lining surface condition

2.3.8.3 Flexible material

Bonding band impression causing lip of material on lining edge is not acceptable. (See Figure 60.)

Bonding band impression causing reduction in material thickness is acceptable at lining ends over 5 % surface area, provided conditions of lining overhang are met. (See Figure 61.)

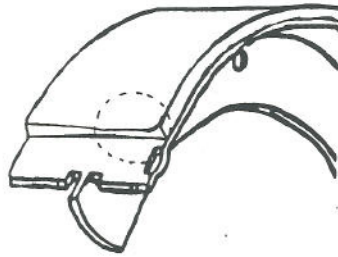


Figure 60 — Flexible material (1)



Figure 61 — Flexible material (2)

2.3.9 Gaps between linings and shoe platform

2.3.9.1 Lining edges

A gap is acceptable if it is equal or less than 0,15 mm wide, equal or less than 5,0 mm deep and up to a maximum of 25 % of one side length. (See Figure 62.)



Figure 62 — Gap in lining edges

2.3.9.2 Lining ends (end lifts)

A gap between lining and shoe platform lining ends (end lift) is not acceptable. (See Figure 63.)



Figure 63 — Gap in lining ends

