

Electromagnetic compatibility (EMC) –
Part 3-13: Limits – Assessment of emission limits for the connection of
unbalanced installations to MV, HV and EHV power systems

CORRIGENDUM 1

Figure A.2

Replace the existing Figure A.2 by the following:

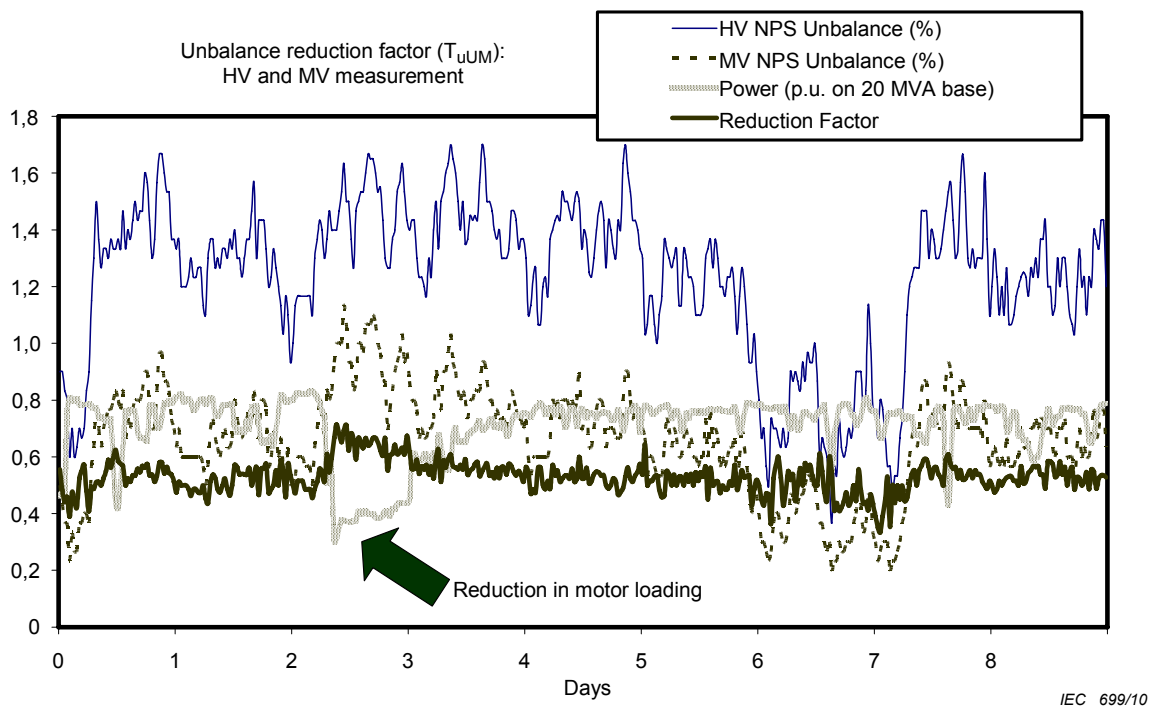


Figure A.2 – Example of unbalance ratio measurement
for a remote mine with largely motor loading