



## Standard Test Method for Porosity in Vitreous Whitewares by Dye Penetration<sup>1</sup>

This standard is issued under the fixed designation C949; the number immediately following the designation indicates the year of original adoption or, in the case of revision, the year of last revision. A number in parentheses indicates the year of last reapproval. A superscript epsilon ( $\epsilon$ ) indicates an editorial change since the last revision or reapproval.

### 1. Scope

1.1 This test method covers procedures for detecting pores, cracks, or other voids that may be present in otherwise impermeable whiteware ceramics, or as porosity in underfired ware.

NOTE 1—This test method was partially derived from ANSI C29.1.

1.2 *This standard does not purport to address all of the safety concerns, if any, associated with its use. It is the responsibility of the user of this standard to establish appropriate safety and health practices and determine the applicability of regulatory limitations prior to use*

### 2. Referenced Documents

2.1 *ASTM Standards:*<sup>2</sup>

**C242 Terminology of Ceramic Whitewares and Related Products**

2.2 *ANSI Standard:*

**C 29.1 Test Methods for Electrical Power Insulators**<sup>3</sup>

### 3. Terminology

3.1 *Definitions:*

3.1.1 For definitions of terms used in this test method, refer to Terminology **C242**.

### 4. Summary of Test Method

4.1 Randomly selected unglazed fragments of vitreous whiteware products are immersed in a fuchsine dye solution, at one or more pressures for prescribed times. After drying, the specimens are broken and inspected for the extent of dye penetration into the body, or into defects present in the body.

### 5. Significance and Use

5.1 This test method provides a means for readily determining if a ceramic is properly fired (matured). Penetration of any extent may negate the usefulness of the ceramic, or, arbitrarily, some degree of penetration may be acceptable for the use or commercial quality of the item being tested.

### 6. Apparatus

6.1 *Vessel*, capable of applying and holding a pressure of 10 000 psi (68.9 MPa).

6.1.1 **Fig. 1** illustrates a satisfactory device.

NOTE 2—**Fig. 1** does not represent the only possible design or configuration. It is representative of a device that has been successfully used.

6.1.2 **Fig. 2** illustrates an actual device and typical examples.

6.1.3 **Fig. 3** illustrates an assembled device, including fixture, under pressure.

### 7. Testing Solution

7.1 Use a solution consisting of 1 g of basic fuchsine dye dissolved in 1 L of 50 % alcohol.

NOTE 3—The alcohol used should not react with the dye to cause fading.

### 8. Preparation of Test Specimens

8.1 Use freshly broken fragments, approximately ¼ in. (6 mm) in the smallest dimension, up to ¾ in. (19 mm) in the largest dimension, of the whiteware ceramic. At least 75 % of the surface shall be free of glaze or other surface treatment.

### 9. Procedure

9.1 Immerse the test specimens in the testing solution within the pressure chamber, and

9.2 Apply a minimum pressure of 4000 psi (27.6 MPa) for not less than 5 h, or

9.3 Apply a minimum 10 000 psi (68.9 MPa) for not less than 2 h, or

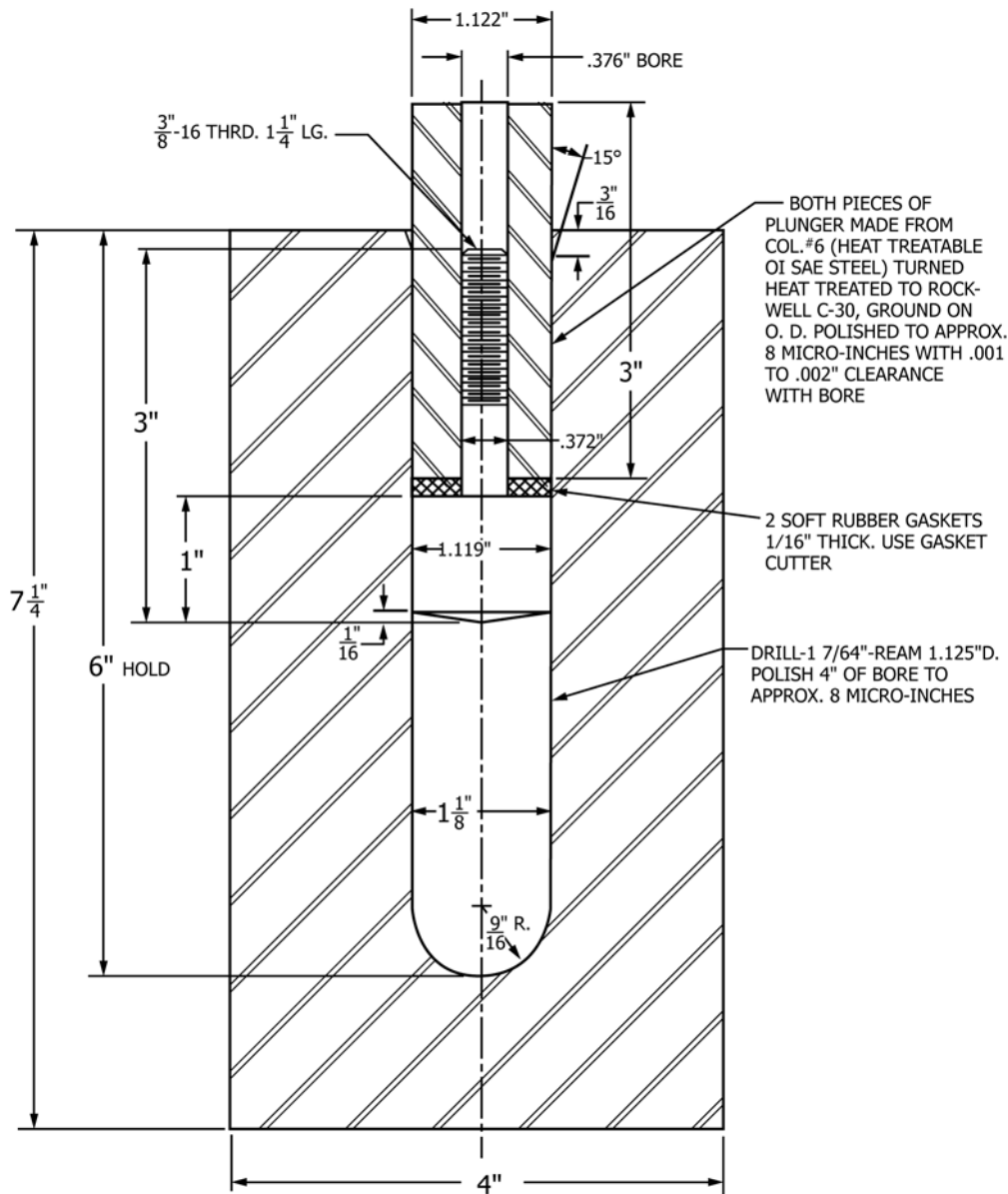
9.4 Immerse the specimens in the testing solution at atmospheric pressure, in an open vessel, for any period of time appropriate to the needs of the tester.

<sup>1</sup> This test method is under the jurisdiction of ASTM Committee C21 on Ceramic Whitewares and Related Products and is the direct responsibility of Subcommittee C21.03 on Methods for Whitewares and Environmental Concerns.

Current edition approved Nov. 1, 2016. Published November 2016. Originally approved in 1980. Last previous edition approved in 2012 as C949 – 80 (2012). DOI: 10.1520/C0949-80R16.

<sup>2</sup> For referenced ASTM standards, visit the ASTM website, [www.astm.org](http://www.astm.org), or contact ASTM Customer Service at [service@astm.org](mailto:service@astm.org). For *Annual Book of ASTM Standards* volume information, refer to the standard's Document Summary page on the ASTM website.

<sup>3</sup> Available from American National Standards Institute (ANSI), 25 W. 43rd St., 4th Floor, New York, NY 10036, <http://www.ansi.org>.



MATERIAL: VASCA JET #1000 HIGH SPEED STEEL-HARDEN TO ROCKWELL C-42 TO C-48 BEFORE HONING

NOTE 1—1 in. = 25.4 mm.

FIG. 1 Typical Pressure Vessel for Dye Penetration Test

## 10. Examination

10.1 After following the procedures in 9.2, 9.3, or 9.4, dry and break the test specimen for examination.

10.2 Porosity is indicated by penetration of the dye into the specimens to an extent visible to the unaided eye.

10.3 Disregard penetration into small fissures formed in preparing the test specimens.

## 11. Report

11.1 Report the following information:

11.1.1 Whether penetration occurred and to what depth,

11.1.2 Pressure used, and

11.1.3 Time under pressure.

## 12. Precision and Bias

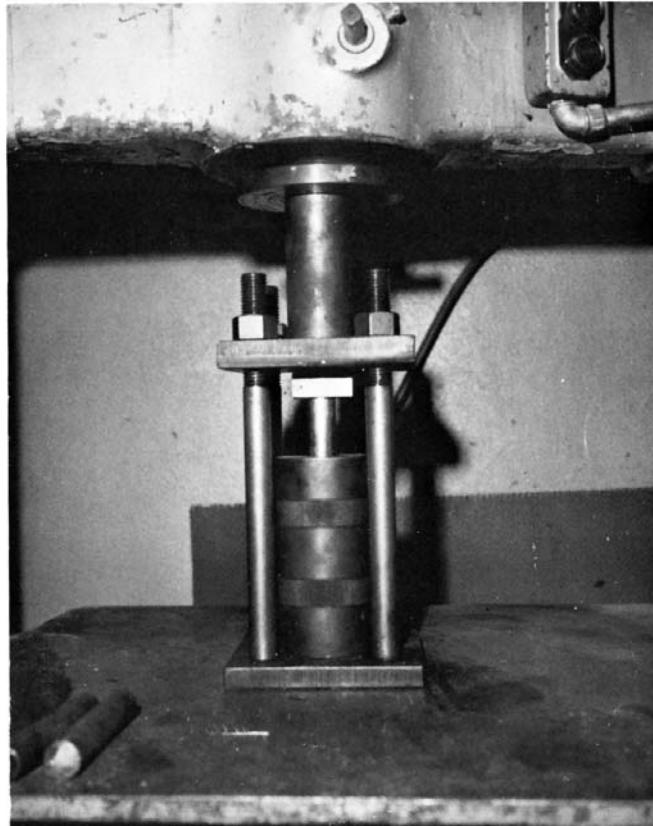
12.1 This test method is qualitative and is liable to subjective interpretation. Within a given laboratory, agreement should be possible between several operators whether penetration exceeds in-house acceptance standards.

## 13. Keywords

13.1 ceramics; porosity; whitewares



**FIG. 2 Typical Unassembled Pressure Vessel and Samples**



**FIG. 3 A Typical Assembled Pressure Vessel**

*ASTM International takes no position respecting the validity of any patent rights asserted in connection with any item mentioned in this standard. Users of this standard are expressly advised that determination of the validity of any such patent rights, and the risk of infringement of such rights, are entirely their own responsibility.*

*This standard is subject to revision at any time by the responsible technical committee and must be reviewed every five years and if not revised, either reapproved or withdrawn. Your comments are invited either for revision of this standard or for additional standards and should be addressed to ASTM International Headquarters. Your comments will receive careful consideration at a meeting of the responsible technical committee, which you may attend. If you feel that your comments have not received a fair hearing you should make your views known to the ASTM Committee on Standards, at the address shown below.*

*This standard is copyrighted by ASTM International, 100 Barr Harbor Drive, PO Box C700, West Conshohocken, PA 19428-2959, United States. Individual reprints (single or multiple copies) of this standard may be obtained by contacting ASTM at the above address or at 610-832-9585 (phone), 610-832-9555 (fax), or [service@astm.org](mailto:service@astm.org) (e-mail); or through the ASTM website ([www.astm.org](http://www.astm.org)). Permission rights to photocopy the standard may also be secured from the Copyright Clearance Center, 222 Rosewood Drive, Danvers, MA 01923, Tel: (978) 646-2600; <http://www.copyright.com/>*