



Standard Test Method for Flexural Performance of Fiber-Reinforced Concrete (Using Beam With Third-Point Loading)¹

This standard is issued under the fixed designation C1609/C1609M; the number immediately following the designation indicates the year of original adoption or, in the case of revision, the year of last revision. A number in parentheses indicates the year of last reapproval. A superscript epsilon (ϵ) indicates an editorial change since the last revision or reapproval.

1. Scope*

1.1 This test method evaluates the flexural performance of fiber-reinforced concrete using parameters derived from the load-deflection curve obtained by testing a simply supported beam under third-point loading using a closed-loop, servo-controlled testing system.

1.2 This test method provides for the determination of first-peak and peak loads and the corresponding stresses calculated by inserting them in the formula for modulus of rupture given in [Eq 1](#). It also requires determination of residual loads at specified deflections, the corresponding residual strengths calculated by inserting them in the formula for modulus of rupture given in [Eq 1](#) (see [Note 1](#)). It provides for determination of specimen toughness based on the area under the load-deflection curve up to a prescribed deflection (see [Note 2](#)) and the corresponding equivalent flexural strength ratio.

NOTE 1—Residual strength is not a true stress but an engineering stress computed using simple engineering bending theory for linear elastic materials and gross (uncracked) section properties.

NOTE 2—Specimen toughness expressed in terms of the area under the load-deflection curve is an indication of the energy absorption capability of the particular test specimen, and its magnitude depends directly on the geometry of the test specimen and the loading configuration.

1.3 This test method utilizes two preferred specimen sizes of 100 by 100 by 350 mm [4 by 4 by 14 in.] tested on a 300 mm [12 in.] span, or 150 by 150 by 500 mm [6 by 6 by 20 in.] tested on a 450 mm [18 in.] span. A specimen size different from the two preferred specimen sizes is permissible.

1.4 *Units*—The values stated in either SI units or inch-pound units are to be regarded separately as standard. The values stated in each system may not be exact equivalents; therefore, each system shall be used independently of the other. Combining values from the two systems may result in non-conformance with the standard.

¹ This test method is under the jurisdiction of ASTM Committee C09 on Concrete and Concrete Aggregates and is the direct responsibility of Subcommittee C09.42 on Fiber-Reinforced Concrete.

Current edition approved Dec. 1, 2012. Published January 2013. Originally approved in 2005. Last previous edition approved in 2010 as C1609/C1609M – 10. DOI: 10.1520/C1609_C1609M-12.

1.5 *This standard does not purport to address all of the safety concerns, if any, associated with its use. It is the responsibility of the user of this standard to establish appropriate safety and health practices and determine the applicability of regulatory limitations prior to use.*

2. Referenced Documents

2.1 ASTM Standards:²

- C31/C31M Practice for Making and Curing Concrete Test Specimens in the Field
- C42/C42M Test Method for Obtaining and Testing Drilled Cores and Sawed Beams of Concrete
- C78 Test Method for Flexural Strength of Concrete (Using Simple Beam with Third-Point Loading)
- C125 Terminology Relating to Concrete and Concrete Aggregates
- C172 Practice for Sampling Freshly Mixed Concrete
- C192/C192M Practice for Making and Curing Concrete Test Specimens in the Laboratory
- C823 Practice for Examination and Sampling of Hardened Concrete in Constructions
- C1140 Practice for Preparing and Testing Specimens from Shotcrete Test Panels

3. Terminology

3.1 *Definitions*—The terms used in this test method are defined in Terminology C125.

3.2 Definitions of Terms Specific to This Standard:

3.2.1 *end-point deflection, n* —the deflection value on the load-deflection curve equal to $1/150$ of the span length, or a larger value as specified at the option of the specifier of tests.

3.2.2 *first-peak load, P_f , n* —the load value at the first point on the load-deflection curve where the slope is zero.

3.2.3 *first-peak deflection, δ_f , n* —the net deflection value on the load-deflection curve at first-peak load.

² For referenced ASTM standards, visit the ASTM website, www.astm.org, or contact ASTM Customer Service at service@astm.org. For *Annual Book of ASTM Standards* volume information, refer to the standard's Document Summary page on the ASTM website.

3.2.4 *first-peak strength* f_p , n —the stress value obtained when the first-peak load is inserted in the formula for modulus of rupture given in Eq 1.

3.2.5 *load-deflection curve*, n —the plot of load versus net deflection of a flexural beam specimen loaded to the end-point deflection.

3.2.6 *net deflection*, n —the deflection measured at mid-span of a flexural beam specimen exclusive of any extraneous effects due to seating or twisting of the specimen on its supports or deformation of the support and loading system.

3.2.7 *peak load*, P_p , n —the maximum load on the load-deflection curve.

3.2.8 *peak-load deflection*, δ_p , n —the net deflection value on the load-deflection curve at peak load.

3.2.9 *peak strength*, f_p , n —the stress value obtained when the peak load is inserted in the formula for modulus of rupture given by Eq 1.

3.2.10 D —nominal depth of the beam specimen in mm.

NOTE 3—To simplify nomenclature, the nominal beam depth is shown in units of mm for both the SI and inch-pound version of this test method.

3.2.11 L —span length or distance between the supports.

3.2.12 *residual load*, P_{600}^D , n —the load value corresponding to a net deflection of $L/600$ for a beam of nominal depth D .

3.2.13 *residual load*, P_{150}^D , n —the load value corresponding to a net deflection of $L/150$ for a beam of nominal depth D .

3.2.14 *residual strength*, f_{600}^D , n —the stress value obtained when the residual load P_{600}^D is inserted in the formula for modulus of rupture given in Eq 1.

3.2.15 *residual strength*, f_{150}^D , n —the stress value obtained when the residual load P_{150}^D is inserted in the formula for modulus of rupture given in Eq 1.

3.2.16 *specimen toughness*, T_{150}^D , n —toughness of beam specimen of nominal depth D at a net deflection of $L/150$.

3.2.17 *equivalent flexural strength ratio*, $R_{T, 150}^D$, n —the value obtained when the specimen toughness T_{150}^D is inserted in Eq 3.

NOTE 4—The equivalent flexural strength ratio is calculated as the ratio of the weighted equivalent load up to a net deflection of $L/150$ over the first-peak load multiplied by 100. The $R_{T, 150}^{150}$ value is equivalent to the $R_{g, 3}$ value defined in the Technical Report No. 34 of the Concrete Society.³

4. Summary of Test Method

4.1 Molded or sawn beam specimens having a square cross-section of fiber-reinforced concrete are tested in flexure using a third-point loading arrangement similar to that specified in Test Method C78 but incorporating a closed-loop, servo-controlled testing system and roller supports that are free to rotate on their axes. Load and net deflection are monitored and recorded to an end-point deflection of at least $1/150$ of the span. Data are recorded and plotted by means of an X-Y plotter, or they are recorded digitally and subsequently used to plot a load-deflection curve. Points termed first-peak, peak, and

residual loads at specified deflections are identified on the curve, and are used to calculate flexural performance parameters.

5. Significance and Use

5.1 The first-peak strength characterizes the flexural behavior of the fiber-reinforced concrete up to the onset of cracking, while residual strengths at specified deflections characterize the residual capacity after cracking. Specimen toughness is a measure of the energy absorption capacity of the test specimen. The appropriateness of each parameter depends on the nature of the proposed application and the level of acceptable cracking and deflection serviceability. Fiber-reinforced concrete is influenced in different ways by the amount and type of fibers in the concrete. In some cases, fibers may increase the residual load and toughness capacity at specified deflections while producing a first-peak strength equal to or only slightly greater than the flexural strength of the concrete without fibers. In other cases, fibers may significantly increase the first-peak and peak strengths while affecting a relatively small increase in residual load capacity and specimen toughness at specified deflections.

5.2 The first-peak strength, peak strength, and residual strengths determined by this test method reflect the behavior of fiber-reinforced concrete under static flexural loading. The absolute values of energy absorption obtained in this test are of little direct relevance to the performance of fiber-reinforced concrete structures since they depend directly on the size and shape of the specimen and the loading arrangement.

5.3 The results of this test method may be used for comparing the performance of various fiber-reinforced concrete mixtures or in research and development work. They may also be used to monitor concrete quality, to verify compliance with construction specifications, obtain flexural strength data on fiber-reinforced concrete members subject to pure bending, or to evaluate the quality of concrete in service.

5.4 The results of this standard test method are dependent on the size of the specimen.

NOTE 5—The results obtained using one size molded specimen may not correspond to the performance of larger or smaller molded specimens, concrete in large structural units, or specimens sawn from such units. This difference may occur because the degree of preferential fiber alignment becomes more pronounced in molded specimens containing fibers that are relatively long compared with the cross-sectional dimensions of the mold. Moreover, structural members of significantly different thickness experience different maximum crack widths for a given mid-span deflection with the result that fibers undergo different degrees of pull-out and extension.

6. Apparatus

6.1 *Testing Machine*—The testing machine shall be capable of servo-controlled operation where the net deflection of the center of the beam is measured and used to control the rate of increase of deflection. Testing machines that use stroke displacement control or load control are not suitable for establishing the portion of the load-deflection curve immediately after first-peak. The loading and specimen support system shall be capable of applying third-point loading to the specimen without eccentricity or torque. The fixtures specified in Test Method C78 are suitable with the qualification that supporting

³ “Concrete Industrial Ground Floors—A Guide to Design and Construction,” Technical Report 34, 3rd edition, Concrete Society, Slough, United Kingdom, 2003.

rollers shall be able to rotate on their axes and shall not be placed in grooves or have other restraints that prevent their free rotation.

6.2 Deflection-Measuring Equipment—Devices such as electronic transducers or electronic deflection gages shall be located in a manner that ensures accurate determination of the net deflection at the mid-span exclusive of the effects of seating or twisting of the specimen on its supports. One acceptable arrangement employs a rectangular jig, which surrounds the specimen and is clamped to it at mid-depth directly over the supports (Figs. 1 and 2). Two electronic displacement transducers or similar digital or analog devices mounted on the jig at mid-span, one on each side, measure deflection through contact with appropriate brackets attached to the specimen. The average of the measurements represents the net deflection.

6.3 Data Recording System—An X-Y plotter coupled directly to electronic outputs of load and deflection is an acceptable means of obtaining the relationship between load and net deflection—that is, the load-deflection curve. A data acquisition system capable of digitally recording and storing load and deflection data at a sampling frequency of at least 2.5 Hz is an acceptable alternative. After a net deflection of $L/900$ has been exceeded, it is permissible to decrease the data acquisition sampling and recording frequency to at least 2 Hz. This applies regardless of the rate of deflection used to load the specimen.

NOTE 6—For X-Y plotters, accurate determination of the area under the load-deflection curve and the loads corresponding to specified deflections is only possible when the scales chosen for load and deflection are reasonably large. A load scale chosen such that 25 mm [1 in.] corresponds to a flexural stress of the order of 1 MPa [150 psi], or no more than 20 % of the estimated first-peak strength, is recommended. A recommended deflection scale is to use 25 mm [1 in.] to represent about 10 % of the end-point deflection of $1/150$ of the span, which is 2 mm [0.08 in.] for a 350 by 100 by 100 mm [14 by 4 by 4 in.] specimen size, and 3 mm [0.12 in.] for a 500 by 150 by 150 mm [20 by 6 by 6 in.] specimen size. When data are digitally stored, the test parameters may be determined directly from

the stored data or from a plot of the data. In the latter case, use a plot scale similar to that recommended for an X-Y plotter.

7. Sampling, Test Specimens, and Test Units

7.1 General Requirements—The nominal maximum size of aggregate and cross-sectional dimensions of test specimens shall be in accordance with Practice C31/C31M or Practice C192/C192M when using molded specimens, or in accordance with Test Method C42/C42M when using sawn specimens, provided that the following requirements are satisfied:

7.1.1 The length of test specimens shall be at least 50 mm [2 in.] greater than three times the depth, and in any case not less than 350 mm [14 in.]. The length of the test specimen shall not be more than two times the depth greater than the span.

7.1.2 The tolerances on the cross-section of the test specimens shall be within $\pm 2\%$. The test specimens shall have a square cross-section within these tolerances.

7.1.3 The width and depth of test specimens shall be at least three times the maximum fiber length.

7.1.4 When the specimen size is not large enough to meet all the requirements of 7.1 – 7.1.3, specimens of square cross-section large enough to meet the requirements shall be used. The three times maximum fiber length requirement for width and depth may be waived at the option of the specifier of tests to permit specimens with a width and depth of 150 mm [6 in.] when using fibers of length 50 to 75 mm [2 to 3 in.].

NOTE 7—The results of tests on beams with relatively stiff fibers, such as steel fibers, longer than one-third the width and depth of the beam may not be comparable with test results of similar-sized beams with fibers shorter than one-third the width and depth because of preferential fiber alignment, and different size beams may not be comparable because of size effects. The degree of preferential fiber alignment may be less for fibers that are flexible enough to be bent by contact with aggregate particles or mold surfaces than for rigid fibers that remain straight during mixing and specimen preparation.



FIG. 1 Arrangement to Obtain Net Deflection by Using Two Transducers Mounted on Rectangular Jig Clamped to Specimen Directly Above Supports

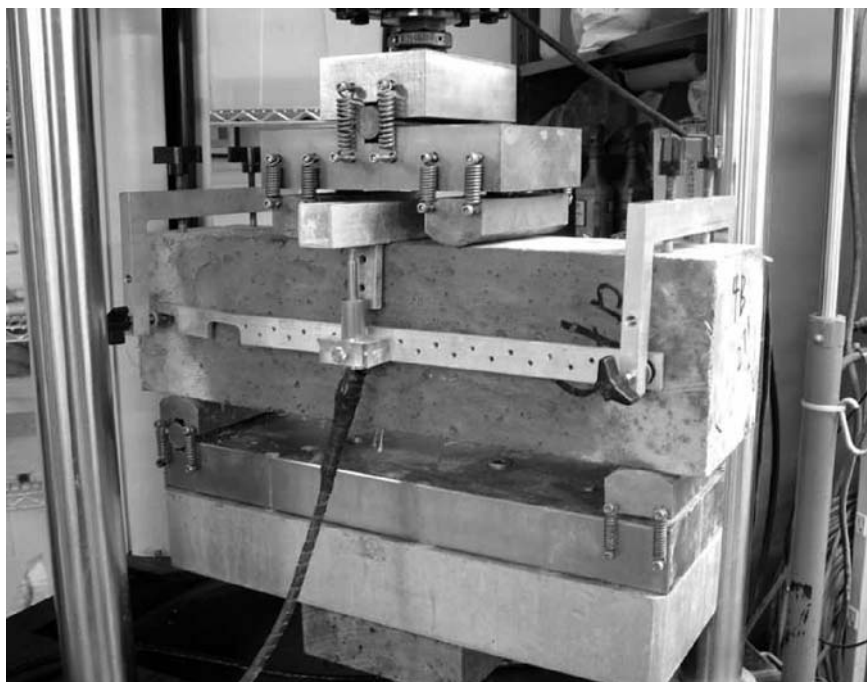


FIG. 2 Arrangement to Obtain Net Deflection by Using Two Transducers Mounted on Jig Secured to Specimen Directly Above Supports

7.2 Freshly Mixed Concrete—Obtain samples of freshly mixed fiber-reinforced concrete for the preparation of test specimens in accordance with Practice C172.

7.2.1 Mold specimens in accordance with Practice C31/C31M or Practice C192/C192M, except that consolidation shall be by external vibration. Consolidation may be considered to be adequate when entrapped air voids are no longer observed rising to the surface of the specimen. Fill the mold in one layer by using a wide shovel or scoop parallel to the length of the mold to place the layer uniformly along the length of the mold.

NOTE 8—Make sure that the time of vibration is sufficient to ensure adequate consolidation, as fiber-reinforced concrete requires a longer vibration time than concrete without fibers, especially when the fiber concentration is relatively high.

7.2.2 When filling the mold, attempt to add an amount of concrete that will exactly fill the mold after consolidation. When screeding the top surface, continue external vibration to ensure that fibers do not protrude from the finished surface.

7.2.3 Curing shall be in accordance with Practice C31/C31M or Practice C192/C192M.

7.3 Hardened Concrete—Select samples of hardened fiber-reinforced concrete from structures in accordance with Practice C823.

7.3.1 Prepare and condition sawn specimens in accordance with Test Method C42/C42M.

7.4 Prepare specimens from shotcrete panels in accordance with Practice C1140.

7.5 Test Unit—Prepare and test at least three specimens from each sample of fresh or hardened concrete.

8. Evaporation Control

8.1 When the time between removal of test specimens from a moist curing environment and the start of testing is likely to exceed 15 min, minimize drying by covering with wet burlap, applying a curing compound, or by other appropriate techniques.

9. Procedure

9.1 Molded or sawn specimens shall be turned on their side with respect to the position as cast before placing on the support system. Specimens representing shotcrete shall be loaded in the same direction as the specimen was shot.

9.2 Arrange the specimen and the loading system so that the specimen is loaded at the third points in accordance with Test Method C78. The span length shall be three times the specimen depth or 300 mm [12 in.], whichever is greater.

NOTE 9—If full contact cannot be reasonably assured between the specimen, the load-applying devices, and the supports before loading, grind the contact surfaces of the specimen so that full contact is achieved. Alternatively, use capping materials at the load or support points.

9.3 Operate the testing machine so that the net deflection of the specimen increases at a constant rate in accordance with Table 1. Up to a net deflection of $L/900$, the rate of increase of net deflection shall be in accordance with the second column of Table 1. For net deflection beyond $L/900$ and up to the end point deflection, a higher rate of increase of net deflection is permitted in accordance with the third column of Table 1. When increasing the loading rate, the rate of increase of net deflection shall be increased in increments not exceeding 0.05 mm/min [0.002 in./min]. Subsequent increases of the rate of increase of net deflection shall be at least 30 s apart. Include the rate(s) of increase of net deflection in the test report.



TABLE 1 Rate of Increase in Net Deflection

Beam size ^A	Up to net deflection of L/900	Beyond net deflection of L/900
100 by 100 by 350 mm [4 by 4 by 14 in.]	0.025 to 0.075 mm/min [0.001 to 0.003 in./min]	0.05 to 0.20 mm/min [0.002 to 0.008 in./min]
150 by 150 by 500 mm [6 by 6 by 20 in.]	0.035 to 0.10 mm/min [0.0015 to 0.004 in./min]	0.05 to 0.30 mm/min [0.002 to 0.012 in./min]

^AThe initial loading rate up to deflection of L/900 for other sizes and shapes of specimens shall be based on reaching the first-peak deflection 40 to 100 s after the start of the test. Beyond a net deflection of L/900, the rate of increase of net deflection shall not exceed 8 times the initial rate.

NOTE 10—First-peak deflection for third-point loading is estimated assuming linear-elastic behavior up to first peak from the equation:

$$\delta_1 = \frac{23P_1L^3}{1296EI} \left[1 + \frac{216d^2(1+\mu)}{115L^2} \right]$$

where:

- δ_1 = the first peak deflection, mm [in.]
- P_1 = the first-peak load, N [lbf]
- L = the span length, mm [in.]
- E = the estimated modulus of elasticity of the concrete, MPa [psi]
- I = the cross-sectional moment of inertia, mm⁴ [in.⁴]
- d = the average depth of specimen at the fracture, as oriented for testing, mm [in.] and
- μ = Poisson's ratio

For a Poisson's ratio of 0.20 and a d to L ratio of 1/3, the value of the portion of the equation in brackets is 1.25.

NOTE 11—For a 350 by 100 by 100 mm [14 by 4 by 4 in.] specimen size, the net deflection at first-peak load is approximately 0.04 mm [0.0016 in.], and for a 500 by 150 mm [20 by 6 by 6 in.] specimen size, it is approximately 0.05 mm [0.002].

9.4 If the rate of increase of net deflection cannot be controlled (see Note 12) during the test, it is permitted to reduce the initial net deflection rate to 50 % of the limits in 9.3 until a net deflection of L/900 is reached. After a net deflection of L/900, the rate of increase of net deflection shall not exceed 8 times the initial rate until the specified end-point deflection is reached. When increasing the loading rate, the rate of increase of net deflection shall be increased in increments not exceeding 0.05 mm/min [0.002 in./min]. Subsequent increases of the rate of net deflection shall be at least 30 s apart. Include the rate(s) of increase of net deflection in the test report.

NOTE 12—The rate of increase of net deflection is out of control if a sudden acceleration of the net deflection of a beam occurs leading to a rate at least 20 times higher than the rate specified in 9.3 and 9.4. The lower loading rate is permitted for brittle (higher strength) concretes to provide better control of the increase of net deflection immediately after the peak load.

9.5 When using deflection-measuring equipment for the first time, or after alterations or maintenance, confirm the reliability of the measured net deflection by comparing the measured deflection at first-peak load with the value estimated from the formula in Note 10.

9.6 Unless otherwise required by the specifier of tests, terminate the test at a net deflection of $1/150$ of the span.

9.7 Further testing to a greater end-point deflection shall be specified at the option of the specifier of tests, and shall be specified as the span divided by some whole number less than 150.

9.8 Make two measurements of the specimen depth and width adjacent to the fracture (one on each face of the specimen) to the nearest 1 mm [0.05 in.] to determine the average depth and width.

9.9 Determine the position of the fracture by measuring the distance along the middle of the tension face from the fracture to the nearest point of support.

9.10 When the fracture occurs outside the middle third of the span, discard the results.

10. Calculation

10.1 Values of load and deflection used in subsequent calculations shall be obtained from the load-deflection curve, or from stored digital data.

10.2 Determine the first-peak load as that value of load corresponding to the first point on the load-deflection curve where the slope is zero, that is, the load is a local maximum value. Determine the corresponding deflection value. See Figs. 3 and 4.

NOTE 13—Small ripples or fluctuations in the load-deflection curve due to electronic noise or mechanical vibration should not be confused with a definite change in the slope of the load-deflection curve in the vicinity of first peak load, particularly when the portion of the curve in question is magnified.

10.3 Calculate the first-peak strength using the first-peak load determined in 10.2, the average specimen dimensions determined in 9.8, and the following formula for modulus of rupture:

$$f = \frac{PL}{bd^2} \quad (1)$$

where:

- f = the strength, MPa [psi],
- P = the load, N [lbf],
- L = the span length, mm [in.],
- b = the average width of the specimen at the fracture, as oriented for testing, mm [in.], and
- d = the average depth of the specimen at the fracture, as oriented for testing, mm [in.].

10.3.1 Record the number rounded to the nearest 0.05 MPa [5 psi] as the first-peak strength, f_1 .

10.4 Determine the peak load as that value of load corresponding to the point on the load-deflection curve that corresponds to the greatest value of load obtained prior to reaching the end-point deflection. Determine the corresponding deflection value.

10.5 Calculate the peak strength using the peak load determined in 10.4, the average specimen dimensions determined in 9.8, and Eq 1. Record the number rounded to the nearest 0.05 MPa [5 psi] as the peak strength, f_P .

10.6 Determine the residual load values, P_{600}^D and P_{150}^D as appropriate for the specimen depth, corresponding to net

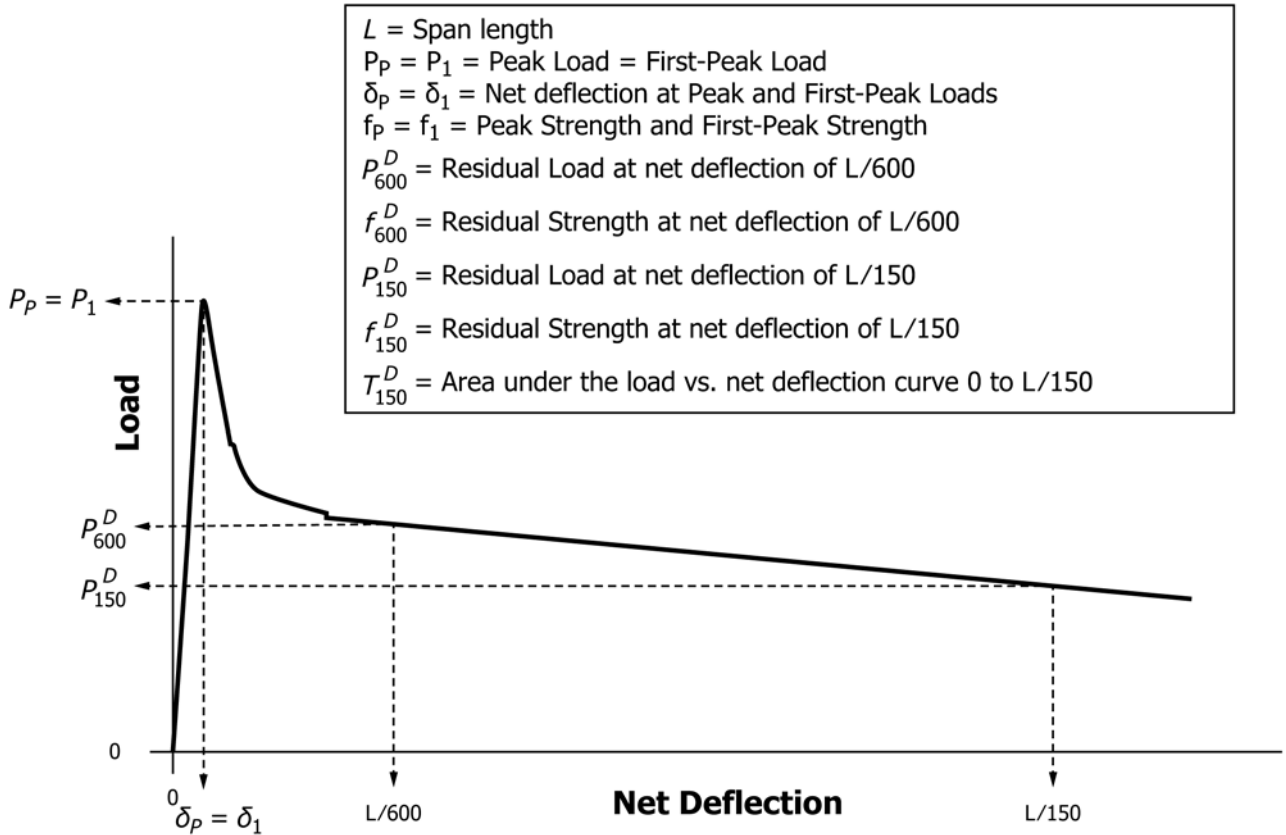


FIG. 3 Example of Parameter Calculations for First-Peak Load Equal to Peak Load (Not to Scale)

deflection values of $L/600$ and $L/150$ of the span length.

10.7 Calculate the residual strengths, f_{600}^D and f_{150}^D using the residual loads determined in 10.6, the average specimen dimensions determined in 9.8, and Eq 1. Record the numbers rounded to the nearest 0.05 MPa [5 psi] as the residual strengths, f_{600}^D and f_{150}^D as appropriate for the specimen depth.

10.8 When required by the specifier of tests, determine the residual load(s) and calculate the residual strength(s) at the values of net deflection required by the specifier of tests at value(s) greater than $L/600$ of the span length using the procedures in this section. Record the calculated value(s) rounded to the nearest 0.05 MPa [5 psi] using the appropriate superscript and subscript(s) to indicate the specimen depth and net deflection(s) selected.

For a specified net deflection δ the subscript XXX is calculated as:

$$XXX = \frac{L}{\delta} \quad (2)$$

10.9 Calculate the total area under the load-deflection curve up to a net deflection of $L/150$ of the span length. Record the number rounded to the nearest Joule [10 in.-lb] as toughness, T_{150}^D as appropriate for the specimen depth.

NOTE 14—If the load and deflection are measured in consistent units, such as Newtons (N) and metres (m), or kilonewtons (kN) and millimetres (mm), the resulting measure of energy will be in units known as Joules (J).

10.10 Calculate the equivalent flexural strength ratio, $R_{T, 150}^D$ according to Eq 3 using the first-peak strength determined in

10.3 and the toughness determined in 10.9. Record the number rounded to the nearest 0.5 % as equivalent flexural strength ratio, $R_{T, 150}^D$ as appropriate for the specimen depth.

$$R_{T, 150}^D = \frac{150 \cdot T_{150}^D}{f_1 \cdot b \cdot d^2} \cdot 100 \% \quad (3)$$

11. Report

11.1 Report the following information:

11.1.1 Type of specimen (molded or sawn) and specimen identification numbers or symbols,

11.1.2 Average width and depth of specimen at the point of fracture to the nearest 1 mm [0.05 in.],

11.1.3 Span length to the nearest 2 mm [0.1 in.],

11.1.4 First-peak load, P_1 , rounded to the nearest N [lbf], first-peak strength, f_1 , to the nearest 0.05 MPa [5 psi], and first-peak deflection, δ_1 , to the nearest 0.01 mm [0.0005 in.],

11.1.5 Peak load, P_p , rounded to the nearest N [lbf], peak strength, f_p , to the nearest 0.05 MPa [5 psi], and peak-load deflection, δ_p , to the nearest 0.01 mm [0.0005 in.],

11.1.6 Residual loads, P_{600}^D and P_{150}^D rounded to the nearest N [lbf],

11.1.7 Residual strengths, f_{600}^D and f_{150}^D rounded to the nearest 0.05 MPa [5 psi],

11.1.8 Toughness, T_{150}^D rounded to the nearest Joule [10 in.-lb],

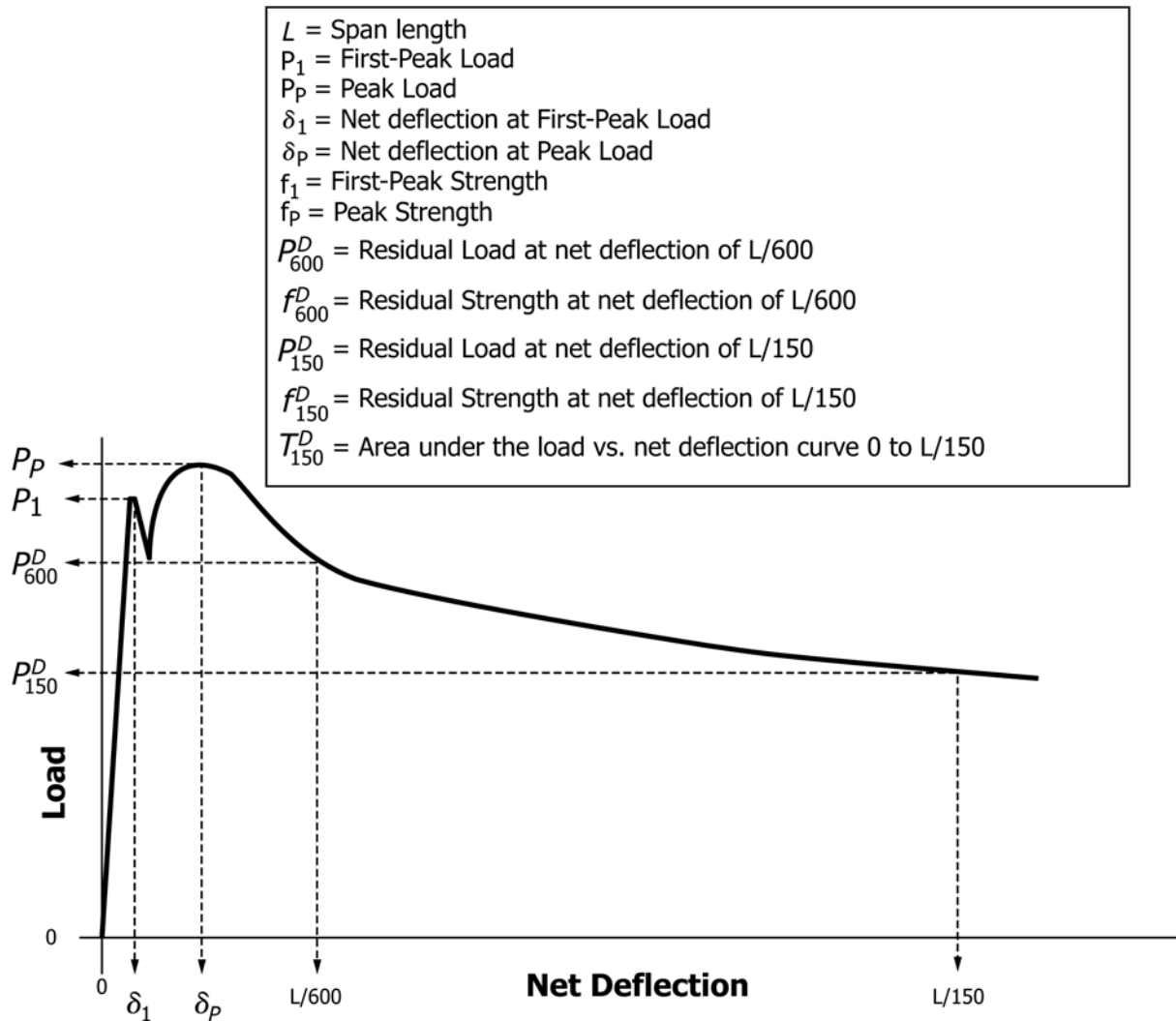


FIG. 4 Example of Parameter Calculations when Peak Load is Greater than First-Peak Load (Not to Scale)

11.1.9 Equivalent flexural strength ratio, $R_{T, 150}^D$ rounded to the nearest 0.5 %,

11.1.10 When required by the specifier of tests, the residual load(s), P_{xxx}^D and corresponding residual strength(s), f_{xxx}^D , rounded to the nearest N [lbf] and 0.05 MPa [5 psi],

11.1.11 Age of the specimens at the time of testing, in days,

11.1.12 Curing history and moisture condition of specimen at test,

11.1.13 Whether the specimen contact surfaces were ground or capped,

11.1.14 The rate(s) of increase of net deflection in mm/min [in./min] and the net deflection(s) at which the change(s) in deflection rate occurred in mm [in.].

11.1.15 Defects in specimen prior to test and abnormalities in specimen behavior during test, and

11.1.16 The load-deflection curve.

12. Precision and Bias

12.1 *Precision*—Tables 2 and 3 provide the repeatability standard deviations for the various parameters measured in this

test method (see Note 15). The reproducibility of this test method is being determined.

NOTE 15—The repeatability standard deviations were developed from analysis of a database composed of 26 sets of three or four replicate test specimens that were tested by one operator using a closed-loop, servo-controlled hydraulic universal-testing machine. A test result is the mean value for each set of replicate test specimens. The concrete mixtures tested contained various steel fibers (10 sets) or synthetic fibers (16 sets) at different fiber contents. All test specimens had nominal dimensions of 102 mm by 102 mm by 356 mm [4 in. by 4 in. by 14 in.] and were tested on a 305 mm [12 in.] span. The test specimens for each set were either molded beams (19 sets) or beams cut from shotcrete panels (7 sets).

12.2 *Bias*—This test method has no bias since the properties determined can only be defined in terms of this test method.

13. Keywords

13.1 fiber-reinforced concrete; first-peak strength; flexural toughness; peak strength; residual load; residual strength



TABLE 2 Single-Operator Standard Deviations (SI units)

	Minimum Test Result	Maximum Test Result	Pooled Within-Batch Standard Deviation, 1s	COV, %
P_1 , N	9868	27071	1543	7.7
f_1 , MPa	2.44	7.12	0.47	8.3
δ_1 , mm	0.03	0.06	0.01	20.0
P_{pr} , N	9869	27071	1922	9.2
f_{pr} , MPa	2.44	7.46	0.57	9.7
δ_{pr} , mm	0.03	2.44	0.52	71.1
P_{150}^{100} , N	5193	18588	2108	17.6
f_{150}^{100} , MPa	1.29	5.41	0.60	17.8
P_{600}^{100} , N	4828	24076	2034	15.2
f_{600}^{100} , MPa	1.20	7.00	0.63	16.4
T_{600}^{100} , J	10	42	4	16.0

TABLE 3 Single-Operator Standard Deviations (inch-pound units)

	Minimum Test Result	Maximum Test Result	Pooled Within-Batch Standard Deviation, 1s	COV, %
P_1 , lbf	2218	6086	347	7.7
f_1 , psi	354	1031	67	8.2
δ_1 , in.	0.0013	0.0023	0.0002	10.0
P_{pr} , lbf	2219	6086	432	9.2
f_{pr} , psi	354	1081	82	9.7
δ_{pr} , in.	0.0013	0.0960	0.0204	140.61
P_{150}^{100} , lbf	1167	4179	474	17.6
f_{150}^{100} , psi	186	784	87	17.8
P_{600}^{100} , lbf	1085	5413	457	15.2
f_{600}^{100} , psi	173	1015	91	16.4
T_{600}^{100} , in.- lbf	92	368	39	17.3



SUMMARY OF CHANGES

Committee C09 has identified the location of selected changes to this test method since the last issue, C1609/C1609M – 10, that may impact the use of this test method. (Approved December 1, 2012.)

(1) Revised **6.3**.

ASTM International takes no position respecting the validity of any patent rights asserted in connection with any item mentioned in this standard. Users of this standard are expressly advised that determination of the validity of any such patent rights, and the risk of infringement of such rights, are entirely their own responsibility.

This standard is subject to revision at any time by the responsible technical committee and must be reviewed every five years and if not revised, either reapproved or withdrawn. Your comments are invited either for revision of this standard or for additional standards and should be addressed to ASTM International Headquarters. Your comments will receive careful consideration at a meeting of the responsible technical committee, which you may attend. If you feel that your comments have not received a fair hearing you should make your views known to the ASTM Committee on Standards, at the address shown below.

This standard is copyrighted by ASTM International, 100 Barr Harbor Drive, PO Box C700, West Conshohocken, PA 19428-2959, United States. Individual reprints (single or multiple copies) of this standard may be obtained by contacting ASTM at the above address or at 610-832-9585 (phone), 610-832-9555 (fax), or service@astm.org (e-mail); or through the ASTM website (www.astm.org). Permission rights to photocopy the standard may also be secured from the Copyright Clearance Center, 222 Rosewood Drive, Danvers, MA 01923, Tel: (978) 646-2600; <http://www.copyright.com/>