



Standard Test Method for Wash Test of Asbestos¹

This standard is issued under the fixed designation C1120/C1120M; the number immediately following the designation indicates the year of original adoption or, in the case of revision, the year of last revision. A number in parentheses indicates the year of last reapproval. A superscript epsilon (ε) indicates an editorial change since the last revision or reapproval.

^{ε1} NOTE—Units information was editorially corrected in January 2012.

1. Scope

1.1 This test method covers the procedure for determining the fines content of asbestos fibers by washing with water on a specified sieve.

1.2 The values stated in either SI units or inch-pound units are to be regarded separately as standard. The values stated in each system may not be exact equivalents; therefore, each system shall be used independently of the other. Combining values from the two systems may result in non-conformance with the standard.

1.3 **Warning**—Breathing of asbestos dust is hazardous. Asbestos and asbestos products present demonstrated health risks for users and for those with whom they come into contact. In addition to other precautions, when working with asbestos-cement products, minimize the dust that results. For information on the safe use of chrysotile asbestos, refer to “Safe Use of Chrysotile Asbestos: A Manual on Preventive and Control Measures.”²

1.4 *This standard does not purport to address all of the safety concerns, if any, associated with its use. It is the responsibility of the user of this standard to establish appropriate safety and health practices and determine the applicability of regulatory limitations prior to use.* For a specific hazards warning, see 1.3.

2. Referenced Documents

2.1 ASTM Standards:³

C430 Test Method for Fineness of Hydraulic Cement by the 45-μm (No. 325) Sieve

¹ This test method is under the jurisdiction of ASTM Committee C17 on Fiber-Reinforced Cement Products and is the direct responsibility of Subcommittee C17.03 on Asbestos - Cement Sheet Products and Accessories.

Current edition approved Nov. 1, 2011. Published January 2012. Originally approved in 1991. Last previous edition approved in 2006 as C1120–98 (2006). DOI: 10.1520/C1120M-98R11E01.

² Available from The Asbestos Institute, http://www.chrysotile.com/en/sr_use/manual.htm.

³ For referenced ASTM standards, visit the ASTM website, www.astm.org, or contact ASTM Customer Service at service@astm.org. For *Annual Book of ASTM Standards* volume information, refer to the standard's Document Summary page on the ASTM website.

C1121 Test Method for Turner and Newall (T and N) Wet-Length Classification of Asbestos

D2589 Test Method for McNett Wet Classification of Dual Asbestos Fiber

D2590 Test Method for Sampling Chrysotile Asbestos

D2946 Terminology for Asbestos and Asbestos–Cement Products

D3639 Test Method for Classification of Asbestos by Quebec Standard Test

D3879 Test Method for Sampling Amphibole Asbestos (Withdrawn 2009)⁴

E11 Specification for Woven Wire Test Sieve Cloth and Test Sieves

E177 Practice for Use of the Terms Precision and Bias in ASTM Test Methods

2.2 QAMA Document:

C-5 Method for T & N Wet Classification of Asbestos⁵

3. Terminology

3.1 For terminology, refer to Terminology **D2946**.

4. Summary of Test Method

4.1 Specimens are washed on a sieve by means of a standard water nozzle.

4.2 The material retained on the screen is dried and weighed, and the percent loss in weight is calculated and reported.

5. Significance and Use

5.1 The wash test gives a rapid and simple evaluation of the fines content.

5.2 The equipment required and the technique followed are both simple and undemanding.

5.3 The fines content obtained by this test method approximates the equivalent screen classification obtained by Test Methods **C1121** and **D2589**.

⁴ The last approved version of this historical standard is referenced on www.astm.org.

⁵ Published in *Chrysotile Asbestos Test Manual*, 3rd edition, available from Asbestos Institute, 1002 Sherbrooke St. W, Suite 1750, Montréal, QC, Canada H3A 3L6.

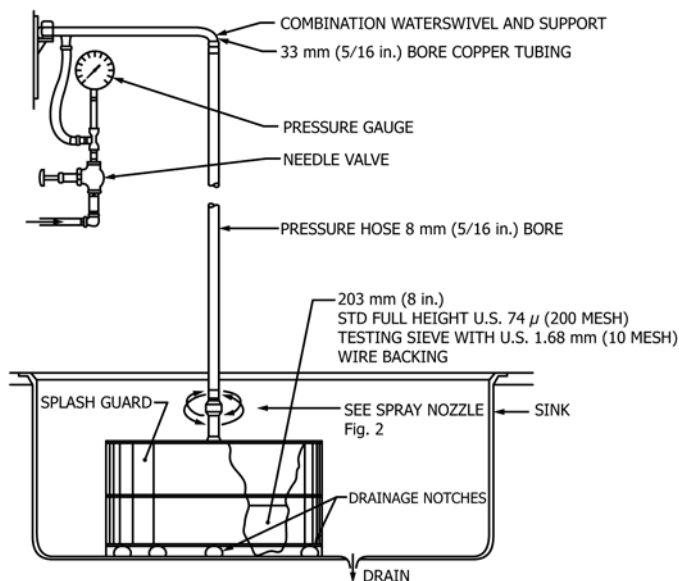


FIG. 1 Wash Test Apparatus

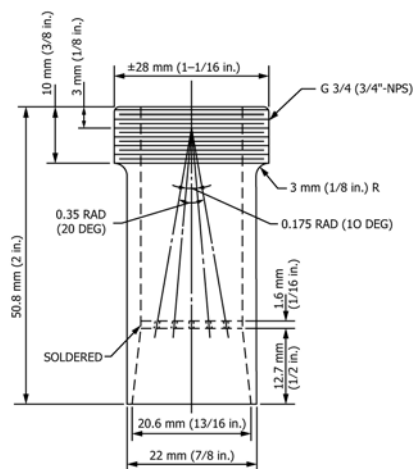
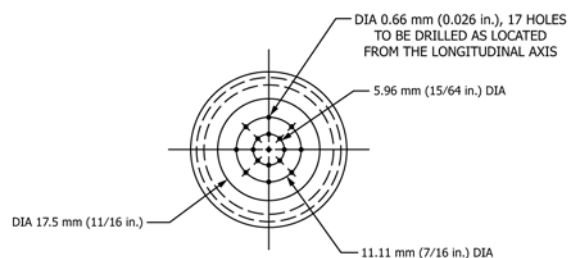


FIG. 2 Spray Nozzle Detail

6. Apparatus

6.1 Standard 74- μ m (No. 200) full height 20-cm [8-in.] diameter testing sieve with a standard 1.68-mm (No. 12) backing wire cloth,⁶ as described in Specification E11.

6.2 For testing floats only, a standard 44- μ m (No. 325) full height 20-cm [8-in.] diameter testing sieve with a 1.68-mm (No. 12) backing wire cloth,⁶ as described in Specification E11, is required.

NOTE 1—In order to prevent the accumulation of water underneath the sieves while washing, several drainage notches may be cut in the sieve frame below the screen cloth, as shown in Fig. 1.

6.3 Standard 20-cm [8-in.] diameter full height sieve frame only for use as a splash guard, as shown in Fig. 1.

6.4 Spray Nozzle, as described in Test Method C430 and shown in Fig. 2.

6.5 Water Supply System, consisting of the following elements, connected in series (refer to Note 2):

6.5.1 Supply of Clean Water, at constant pressure. A water pressure regulator may be required at some locations.

6.5.2 Needle Valve, for regulating the water flow rate.

6.5.3 Pressure Gage, capable of tolerating the maximum supply pressure and which may be read to within ± 7 kPa [1 psig]. Mount the gage in the run of a tee-pipe fitting.

6.5.4 Wall-Mounted Swivel Hose Support, as described in Fig. 1.

6.5.5 Pressure Hose, with a 6 to 13-mm [0.25 to 0.5-in.] bore just long enough to suspend the nozzle from the swivel to a level 127 ± 7 mm [5 ± 0.25 in.] above the screen surface of the sieve.

⁶ The sole source of supply of the sieves fitted with stainless steel wire cloth known to the committee at this time is W. S. Tyler Company, Ltd., 8570 Tyler Blvd., Mentor, OH 44060. If you are aware of alternative suppliers, please provide this information to ASTM International Headquarters. Your comments will receive careful consideration at a meeting of the responsible technical committee,¹ which you may attend.

6.6 Ashless Filter Paper, thin, rapid filtering, hardened to provide adequate wet strength and resistance to wetting.

6.7 Drying Apparatus, such as an oven or an infrared dryer.

7. Hazards

7.1 Warning—see 1.3.

8. Sampling

8.1 Take a sample in accordance with Test Method D2590 in the case of chrysotile asbestos, or in accordance with Test Method D3879 in the case of amphibole asbestos.

8.2 At least 20 g of sample is required to derive duplicate specimens.

8.3 Weigh out two specimens of 10 ± 0.05 g each.

9. Calibration and Standardization

9.1 By means of the needle valve, regulate the water flow rate so that a pressure of 138 ± 7 kPa [20 ± 1 psig] will register on the gage.

9.2 Determine the time required for 2 dm³ (2 L) to flow through the nozzle by collecting the discharge in a graduated cylinder.

9.3 The time required shall be between 23 and 26 s. If the time is shorter, check the nozzle openings for precision of bore. If the time is longer, check nozzle openings for blockage, or for the presence of burrs on new nozzles. If nozzle openings are satisfactory, verify the accuracy of the pressure gage.

10. Procedure

10.1 For Quebec Standard (as determined by Test Method **D3639**), Group 3 to 7 fibers, select a 74- μm (No. 200) sieve. For floats use a 44- μm (No. 325) sieve.

10.2 Fit the sieve with a splash guard and spread the test specimen on the screen surface.

10.3 Wet the specimen thoroughly with a gentle spray at approximately 14 kPa [2 psig]. A few seconds is sufficient time for this operation. Do not exceed 15 s to avoid loss of fines at this stage.

10.4 Adjust the pressure at 138 ± 7 kPa [20 ± 1 psig].

10.5 Start a timer and begin the washing cycle.

10.6 *Washing Cycle:*

10.6.1 Keep the nozzle 127 ± 7 mm [5 ± 0.25 in.] above the screen surface by means of the support and move the spray in a circular motion alternately in the clockwise and counter-clockwise directions so that all the fiber is thoroughly and uniformly washed.

10.6.2 In order to ensure a thorough washing, occasionally change the position of the specimen on the screen by directing the spray obliquely onto the fiber. This motion could possibly be described as a chasing action and is critical in the performance of the test.

NOTE 2—A motorized device which imparts a planetary circular motion to the nozzle may be used provided this yields the same results.

NOTE 3—Blinding of the screen is indicated by an accumulation of water on the sieve. This condition materially reduces the effectiveness of the spray and should be corrected by tilting the sieve and directing the nozzle on the blinded areas to dislodge the small particles from the mesh.

10.6.3 After washing for 120 s (2 min), transfer the fiber to a Büchner funnel and filter it on a previously dried and weighed filter paper.

10.7 Dry the residues to constant weight.

10.8 Invert the sieve and clean it with the spray by back washing.

10.9 Wash the second specimen as described above.

11. Calculation or Interpretation of Results

11.1 If the dry weights of the retained fractions from both specimens differ by 0.2 g or less, accept the results. Otherwise, wash additional specimens until results on two of the specimens are acceptable.

11.2 *Calculation*—Calculate the fines content by subtracting the dry weight of the retained fraction from the specimen weight and express the loss in mass as the percent fines content based on the specimen weight.

12. Report

12.1 Report the fines content as the average of two acceptable results.

12.2 Fully identify the sample as to designation and origin.

13. Precision and Bias

13.1 *Precision*—The single-apparatus multi-operator precision is ± 1.0 percent (two sigma limits) as defined in Practice **E177**, over the range of 12.6 to 98.6 percent fines content.

13.2 *Bias*—In comparison with the results obtained by Test Methods **C1121** and **D2589** for fractions passing through the 74- μm sieve (for fiber Groups 3 to 7) and the 44- μm sieve (for floats), no statistically significant bias has been obtained.

14. Keywords

14.1 asbestos; fines content; wash test; wet sieving

ASTM International takes no position respecting the validity of any patent rights asserted in connection with any item mentioned in this standard. Users of this standard are expressly advised that determination of the validity of any such patent rights, and the risk of infringement of such rights, are entirely their own responsibility.

This standard is subject to revision at any time by the responsible technical committee and must be reviewed every five years and if not revised, either reapproved or withdrawn. Your comments are invited either for revision of this standard or for additional standards and should be addressed to ASTM International Headquarters. Your comments will receive careful consideration at a meeting of the responsible technical committee, which you may attend. If you feel that your comments have not received a fair hearing you should make your views known to the ASTM Committee on Standards, at the address shown below.

This standard is copyrighted by ASTM International, 100 Barr Harbor Drive, PO Box C700, West Conshohocken, PA 19428-2959, United States. Individual reprints (single or multiple copies) of this standard may be obtained by contacting ASTM at the above address or at 610-832-9585 (phone), 610-832-9555 (fax), or service@astm.org (e-mail); or through the ASTM website (www.astm.org). Permission rights to photocopy the standard may also be secured from the Copyright Clearance Center, 222 Rosewood Drive, Danvers, MA 01923, Tel: (978) 646-2600; <http://www.copyright.com/>