

# Measurement of Properties of Proppants Used in Hydraulic Fracturing and Gravel-packing Operations

ANSI/API RECOMMENDED PRACTICE 19C  
FIRST EDITION, MAY 2008

**ISO 13503-2:2006 (Identical), Petroleum and natural gas industries—Completion fluids and materials**

**Part 2:**

**Measurement of properties of proppants used in hydraulic fracturing and gravel-packing operations**





## Special Notes

API publications necessarily address problems of a general nature. With respect to particular circumstances, local, state, and federal laws and regulations should be reviewed.

Neither API nor any of API's employees, subcontractors, consultants, committees, or other assignees make any warranty or representation, either express or implied, with respect to the accuracy, completeness, or usefulness of the information contained herein, or assume any liability or responsibility for any use, or the results of such use, of any information or process disclosed in this publication. Neither API nor any of API's employees, subcontractors, consultants, or other assignees represent that use of this publication would not infringe upon privately owned rights.

API publications may be used by anyone desiring to do so. Every effort has been made by the Institute to assure the accuracy and reliability of the data contained in them; however, the Institute makes no representation, warranty, or guarantee in connection with this publication and hereby expressly disclaims any liability or responsibility for loss or damage resulting from its use or for the violation of any authorities having jurisdiction with which this publication may conflict.

API publications are published to facilitate the broad availability of proven, sound engineering and operating practices. These publications are not intended to obviate the need for applying sound engineering judgment regarding when and where these publications should be utilized. The formulation and publication of API publications is not intended in any way to inhibit anyone from using any other practices.

Any manufacturer marking equipment or materials in conformance with the marking requirements of an API standard is solely responsible for complying with all the applicable requirements of that standard. API does not represent, warrant, or guarantee that such products do in fact conform to the applicable API standard.

All rights reserved. No part of this work may be reproduced, stored in a retrieval system, or transmitted by any means, electronic, mechanical, photocopying, recording, or otherwise, without prior written permission from the publisher. Contact the Publisher, API Publishing Services, 1220 L Street, N.W., Washington, D.C. 20005.

*Copyright © 2008 American Petroleum Institute*

## **API Foreword**

Nothing contained in any API publication is to be construed as granting any right, by implication or otherwise, for the manufacture, sale, or use of any method, apparatus, or product covered by letters patent. Neither should anything contained in the publication be construed as insuring anyone against liability for infringement of letters patent.

This document was produced under API standardization procedures that ensure appropriate notification and participation in the developmental process and is designated as an API standard. Questions concerning the interpretation of the content of this publication or comments and questions concerning the procedures under which this publication was developed should be directed in writing to the Director of Standards, American Petroleum Institute, 1220 L Street, N.W., Washington, D.C. 20005. Requests for permission to reproduce or translate all or any part of the material published herein should also be addressed to the director.

Generally, API standards are reviewed and revised, reaffirmed, or withdrawn at least every five years. A one-time extension of up to two years may be added to this review cycle. Status of the publication can be ascertained from the API Standards Department, telephone (202) 682-8000. A catalog of API publications and materials is published annually and updated quarterly by API, 1220 L Street, N.W., Washington, D.C. 20005.

Suggested revisions are invited and should be submitted to the Standards and Publications Department, API, 1220 L Street, NW, Washington, D.C. 20005, [standards@api.org](mailto:standards@api.org).

# Contents

Page

Special Notes .....	i
API Foreword .....	ii
Foreword .....	v
Introduction.....	vi
1 Scope .....	1
2 Normative references .....	1
3 Abbreviations .....	1
4 Standard proppant sampling procedure .....	2
4.1 General .....	2
4.2 Particle segregation .....	2
4.3 Equipment .....	2
4.4 Number of required samples — Bulk .....	5
4.5 Sampling — Bulk material .....	6
4.6 Sampling — Bagged material .....	6
5 Sample handling and storage .....	6
5.1 Sample reduction .....	6
5.2 Sample splitting .....	6
5.3 Sample and record retention and storage .....	6
6 Sieve analysis .....	7
6.1 Purpose .....	7
6.2 Description .....	7
6.3 Equipment and materials .....	7
6.4 Procedure .....	7
6.5 Calculation of the mean diameter, median diameter and standard deviation .....	8
6.6 Sieve calibration .....	10
7 Proppant sphericity and roundness .....	12
7.1 Purpose .....	12
7.2 Description .....	13
7.3 Apparatus capability .....	13
7.4 Procedure .....	13
7.5 Alternate method for determining average sphericity and roundness .....	14
8 Acid solubility .....	15
8.1 Purpose .....	15
8.2 Description .....	15
8.3 Equipment and materials .....	15
8.4 Procedure .....	16
9 Turbidity test .....	17
9.1 Purpose .....	17
9.2 Description .....	17
9.3 Equipment and materials .....	17
9.4 Equipment calibration .....	17
9.5 Procedure .....	18
10 Procedures for determining proppant bulk density, apparent density and absolute density ....	18
10.1 Purpose .....	18
10.2 Description .....	18

10.3	Bulk density.....	18
10.4	Apparent density.....	21
10.5	Absolute density.....	23
11	Proppant crush-resistance test.....	23
11.1	Purpose.....	23
11.2	Description .....	24
11.3	Equipment and materials .....	24
11.4	Sample preparation .....	24
11.5	Crush-resistance procedure.....	25
12	Loss on ignition of resin-coated proppant .....	27
12.1	Objective.....	27
12.2	Apparatus and materials.....	27
12.3	Loss-on-ignition procedure for whole-grain proppant .....	27
Annex A (informative) Formazin solution preparation .....		29
Bibliography .....		30

## Foreword

ISO (the International Organization for Standardization) is a worldwide federation of national standards bodies (ISO member bodies). The work of preparing International Standards is normally carried out through ISO technical committees. Each member body interested in a subject for which a technical committee has been established has the right to be represented on that committee. International organizations, governmental and non-governmental, in liaison with ISO, also take part in the work. ISO collaborates closely with the International Electrotechnical Commission (IEC) on all matters of electrotechnical standardization.

International Standards are drafted in accordance with the rules given in the ISO/IEC Directives, Part 2.

The main task of technical committees is to prepare International Standards. Draft International Standards adopted by the technical committees are circulated to the member bodies for voting. Publication as an International Standard requires approval by at least 75 % of the member bodies casting a vote.

Attention is drawn to the possibility that some of the elements of this document may be the subject of patent rights. ISO shall not be held responsible for identifying any or all such patent rights.

ISO 13503-2 was prepared by Technical Committee ISO/TC 67, *Materials, equipment and offshore structures for petroleum, petrochemical and natural gas industries*, Subcommittee SC 3, *Drilling and completion fluids, and well cements*.

ISO 13503 consists of the following parts, under the general title *Petroleum and natural gas industries — Completion fluids and materials*:

- *Part 1: Measurement of viscous properties of completion fluids*
- *Part 2: Measurement of properties of proppants used in hydraulic fracturing and gravel-packing operations*
- *Part 3: Testing of heavy brines*
- *Part 4: Procedure for measuring stimulation and gravel-pack fluid leakoff under static conditions*
- *Part 5: Procedures for measuring the long-term conductivity of proppants*

## Introduction

This part of ISO 13503 is a compilation and modification of API RP 56 <sup>[1]</sup>, API RP 58 <sup>[2]</sup> and API RP 60 <sup>[3]</sup>.

The procedures have been developed to improve the quality of proppants delivered to the well site. They are for use in evaluating certain physical properties used in hydraulic fracturing and gravel-packing operations. These tests should enable users to compare the physical characteristics of various proppants tested under the described conditions and to select materials useful for hydraulic fracturing and gravel-packing operations.

The procedures presented in this part of ISO 13503 are not intended to inhibit the development of new technology, material improvements or improved operational procedures. Qualified engineering analysis and judgment are required for their application to a specific situation.

In this part of ISO 13503, where practical, US Customary (USC) units are included in brackets for information.

Annex A of this part of ISO 13503 is for information only.



# **Petroleum and natural gas industries — Completion fluids and materials —**

## **Part 2: Measurement of properties of proppants used in hydraulic fracturing and gravel-packing operations**

### **1 Scope**

This part of ISO 13503 provides standard testing procedures for evaluating proppants used in hydraulic fracturing and gravel-packing operations.

NOTE “Proppants” mentioned henceforth in this part of ISO 13503 refer to sand, ceramic media, resin-coated proppants, gravel-packing media and other materials used for hydraulic fracturing and gravel-packing operations.

The objective of this part of ISO 13503 is to provide a consistent methodology for testing performed on hydraulic fracturing and/or gravel-packing proppants.

### **2 Normative references**

The following referenced documents are indispensable for the application of this document. For dated references, only the edition cited applies. For undated references, the latest edition of the referenced document (including any amendments) applies.

ASTM E11, *Standard Specification for Wire Cloth and Sieves for Testing Purposes*

### **3 Abbreviations**

API	American Petroleum Institute
ASTM	American Society for Testing and Materials
ASG	apparent specific gravity
FTU	formazin turbidity unit
HCl	hydrochloric acid
HF	hydrofluoric acid
LOI	loss on ignition
NTU	nephelometric turbidity unit

## 4 Standard proppant sampling procedure

### 4.1 General

Before any sample is taken, consider what tests will be performed, as each test requires a different volume. It is very important that both the supplier and customer obtain the best representative sample possible. Unless the sample is truly representative of a total shipment or container, testing and correlation with specifications/standards is very difficult. It is unlikely that sampling/testing methods in the field duplicate the producer's system. The standard procedures included within this part of ISO 13503 are to assist in obtaining representative samples. However, there are inherent variations associated with sampling, testing equipment and the procedures that can lead to inconsistent results. A sample that is representative of a truckload [23 000 kg (50 700 lb)] or a railcar load [90 000 kg (198 000 lb)] can be an initial source of wide variation when making comparisons. All parties shall take care to insure uniform sampling. The customer and the supplier shall agree on sampling and testing methods/techniques.

For the best representation, continuous sampling is ideal. Although many proppant suppliers utilize automatic sampling, it is usually impractical at the job site. If sampling is conducted while unloading a container or at the site, consideration should be given to the number or frequency of samples.

If bulk containers are filled from a flowing stream of proppant material, sampling procedures in accordance with 4.5 shall be applied. If bulk containers are filled using sacked proppant material, sampling procedures in accordance with 4.6 shall be applied.

### 4.2 Particle segregation

It is important to have a basic understanding of segregation when sampling proppant. Depending on the size, shape, distribution and mechanisms involved, there is usually a certain amount of error or variability involved in sampling due to segregation. The sampling procedures described here are the result of much experience and are designed to minimize the effects of segregation of particles by size.

Particles, such as proppants, naturally find the path of least resistance when moved or when force is applied. During transfer or movement, particles of differing size and mass naturally separate or segregate. The degree of segregation depends on the mechanisms involved in the transfer or movement.

There are several forces, such as gravity, acting on a stream of particles as it flows. Within a moving stream, fine particles drop through the voids or gaps and coarser particles move to the outside. The fine particles migrate and usually rest close to the area where they land. The heavier, coarser particles bounce or roll much further, stratifying the material by size.

### 4.3 Equipment

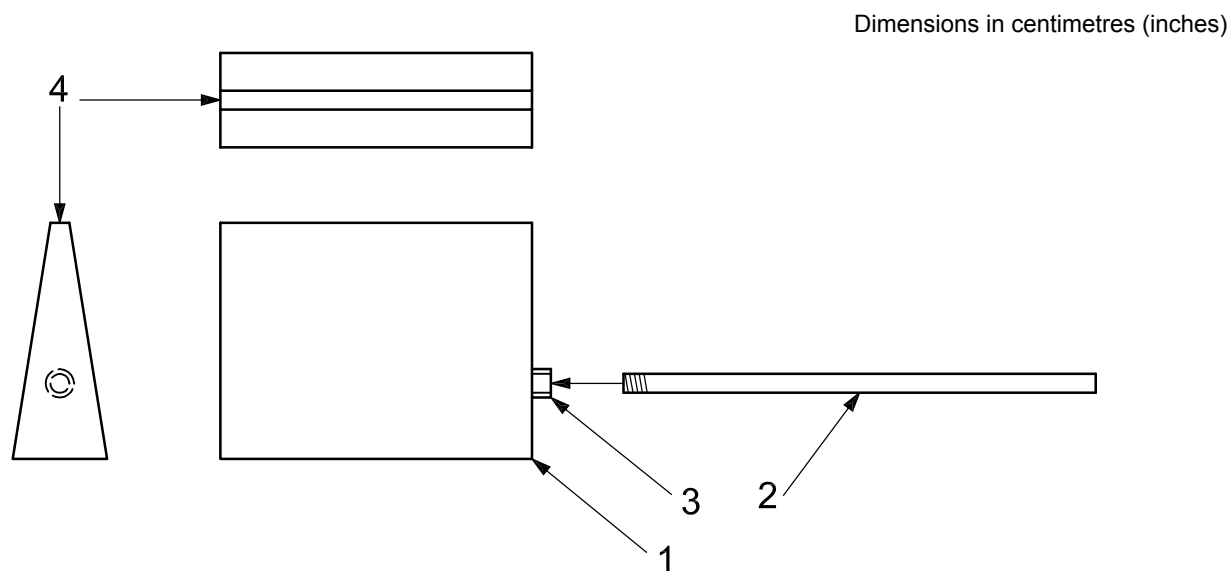
The following equipment shall be used to compile representative proppant material samples.

#### 4.3.1 Box sampling device, with a 13 mm (0.50 in) slot opening.

The length of the 13 mm (0.50 in) slot shall be longer than the thickness of the stream being sampled. The volume of the sampler shall be large enough so as to not overflow while cutting through the entire stream. A box sampling device meeting these criteria is shown in Figure 1.

#### 4.3.2 Sample reducer, of appropriate size for handling sack-size samples and reducing the material to 1/16 of the original mass; see Figure 2.

#### 4.3.3 Sample splitter, of appropriate size; see Figure 3.

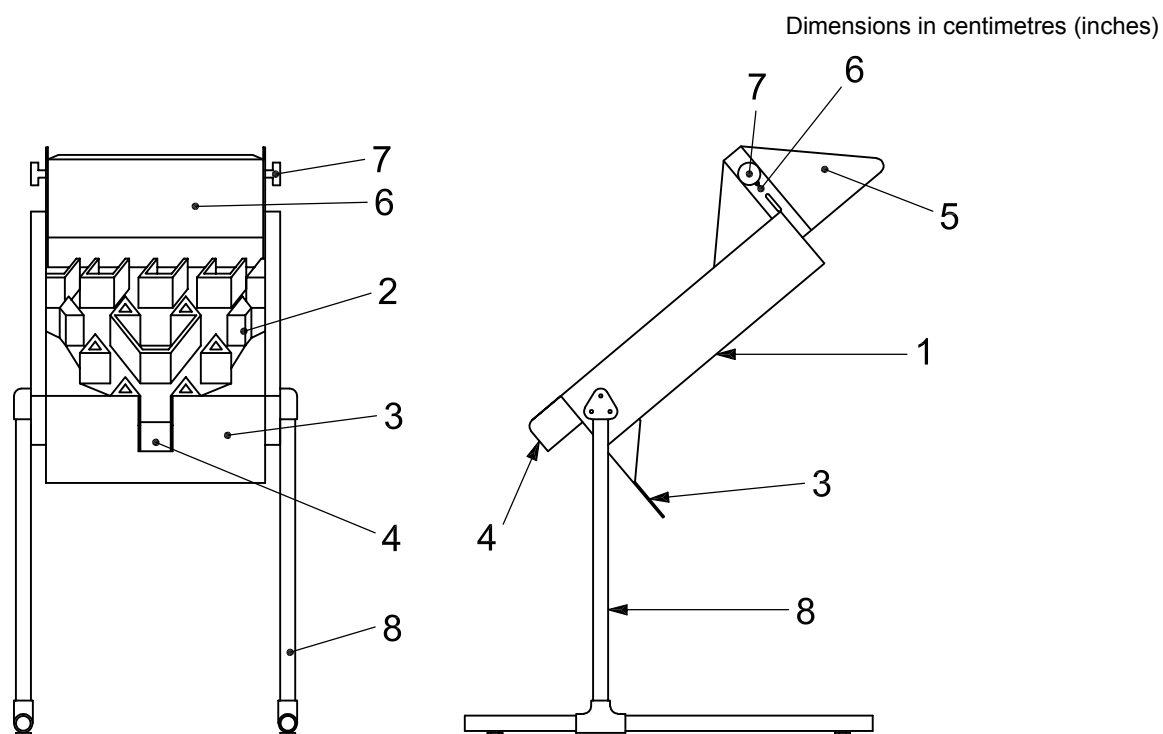
**Key**1 sampler body,  $15.9 \times 20.9 \times 6.35$  ( $6.25 \times 8.25 \times 2.5$ )

3 pipe coupling

2 handle

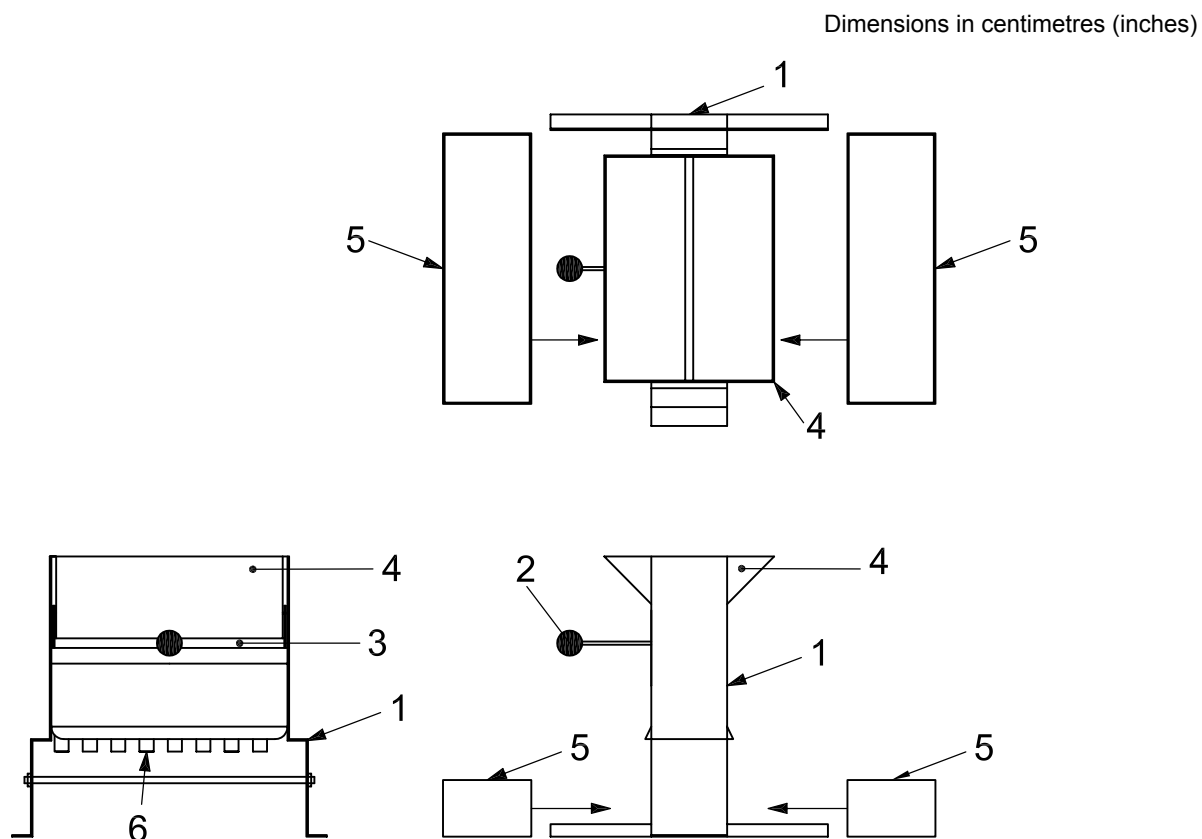
4 sample opening, 1.27 (0.50)

**Figure 1 — Box sampling device**

**Key**

- |   |   |   |   |
|---|---|---|---|
| 1 | main body, 36.8 × 48.3 × 11.4 (14.5 × 19.0 × 4.5)       | 5 | hopper, 36.8 × 24.1 × 15.2 (14.5 × 9.5 × 6.0)             |
| 2 | splitter plate, 5.1 × 5.1 × 5.1 (2 × 2 × 2)             | 6 | gate, 36.8 × 19.1 × 0.32 (14.5 × 7.5 × 0.125)             |
| 3 | discharge plate, 36.8 × 30.5 × 0.32 (14.5 × 12 × 0.125) | 7 | hand knob, 3.8 (1.5) diameter                             |
| 4 | discharge chute, 5.7 × 5.7 × 7.6 (2.25 × 2.25 × 3.0)    | 8 | support stand assembly, 71.1 × 38.1 × 68.6 (28 × 15 × 27) |

**Figure 2 — Sample reducer**

**Key**

- 1 main body, 29.2 × 27.9 × 16.5 (11.5 × 11.0 × 6.5)
- 2 handle
- 3 gate plate
- 4 hopper
- 5 pan
- 6 splitter vanes, 1.25 (0.5)

**Figure 3 — Sample splitter****4.4 Number of required samples — Bulk****4.4.1 Proppants for hydraulic fracturing**

A minimum of one sample per 9 000 kg (20 000 lb) or fraction thereof, shall be obtained. A maximum of 10 samples per bulk container shall be obtained, combined and tested.

**4.4.2 Gravel-packing media**

A minimum of one sample per 4 500 kg (10 000 lb) but no fewer than two samples per job shall be obtained, combined and tested.

## **4.5 Sampling — Bulk material**

All samples shall be obtained from a flowing stream of proppant by a manual or automatic sampler. Samples shall not be taken from a static pile. The sampling device shall be used with its length perpendicular to the flowing proppant stream. The sampler shall be passed at a uniform rate from side to side through the full stream width of moving proppant. This shall be done as the material is moving to or from a conveyor belt into a blender, truck, railcar or bulk container. Two metric tons of proppant material shall be allowed to flow prior to taking the first sample. The number of samples taken shall comply with 4.4. During sampling, the sampling receptacle shall be passed completely across the moving proppant stream in a brief interval of time so as to take the entire stream with each pass. Under no circumstances shall the sampling receptacle be allowed to overflow.

## **4.6 Sampling — Bagged material**

### **4.6.1 Bags up to 50 kg (110 lb)**

Only whole bags shall be used for sampling bagged proppant materials.

### **4.6.2 Totes/bulk bags/super sacks weighing up to 2 000 kg (4 400 lb)**

Unless the product can be sampled in a free-flowing state, the sampling of large bags presents the same problems as for a static pile. Follow the same sample frequency as described in 4.4, using the sampling method described in 4.5, except for allowing approximately 50 kg (110 lb) to be discharged from the bulk bag before sampling.

## **5 Sample handling and storage**

### **5.1 Sample reduction**

Place the contents of the combined bulk sample of proppant, or an entire sack up to 50 kg (110 lb), in the 16:1 sample reducer (see Figure 2) or equivalent. Obtain a reduced sample of approximately 1/16 of the original mass of the total sack's contents, typically 3 kg (6.6 lb).

### **5.2 Sample splitting**

An appropriately-sized sample reducer and sample splitter shall be used to permit samples to be prepared for testing. Place the reduced sample, obtained according to 5.1, or the sample obtained during bulk material loading operations (refer to 4.5), in the sample splitter (refer to Figure 3) and split the sample to a testing-aliquot size of approximately 1 kg (2.2 lb). Sufficient proppant material shall be split to permit performance of recommended tests as specified in this part of ISO 13503.

### **5.3 Sample and record retention and storage**

The proppant supplier shall maintain records of all tests conducted on each shipment for a minimum of one year. Physical samples of an amount sufficient to conduct all tests recommended herein, but in no cases less than 0.25 kg (0.5 lb), shall be retained in storage for a minimum of six months. Any material subsequently taken for testing shall be split from the retained sample. Samples shall be sealed in a type of container that is sufficient to protect the sample from contamination and moisture. Samples shall be stored in a cool dry place.

## 6 Sieve analysis

### 6.1 Purpose

The purpose of the procedure in Clause 6 is to ensure a consistent methodology for sieve analysis and to provide a consistent procedure for sieve evaluation.

### 6.2 Description

The procedure and equipment described in 6.3 to 6.6 are the most widely utilized in the gas and oil industry. Alternate methods may be used but shall be correlated with these standard methods.

### 6.3 Equipment and materials

**6.3.1 Sieve sets**, two, complying with the requirements of the ASTM Series, 200 mm (8 in) diameter or equivalent.

One set is a working set of sieves, and the other a master set to be used for standardization only.

Refer to ASTM E11.

**6.3.2 Testing sieve shaker**, providing simultaneous rotating and tapping action, that accepts the sieves specified in Table 1.

The shaker shall be calibrated to the following specifications: 290 rev/min, 156 taps/min, height of tapper 33.4 mm (1.3 in) and timer accurate to  $\pm 5$  s.

**6.3.3 Balance**, minimum 100 g (0.22 lb) capacity with a precision of 0.1 g or better.

**6.3.4 Brushes**, nylon or equivalent.

### 6.4 Procedure

**6.4.1** Stack a minimum of seven sieves, recently checked against a master set, plus a pan and cover, in a stack of decreasing sieve-opening sizes from top to bottom. Table 1 establishes sieve sizes for use in testing designated example proppant sizes. Table 1 should be used as a guide and does not attempt to preclude the use of other grades that are or can become available.

**6.4.2** Using a split sample of 80 g to 120 g, obtain an accurate sample to within 0.1 g.

**6.4.3** Weigh each sieve and record the mass. Pour the split sample onto the top sieve, place the stack of sieves plus pan and lid in testing sieve shaker and agitate for 10 min.

**6.4.4** Remove the sieve stack from the testing sieve shaker.

**6.4.5** Weigh and record the mass retained on each of the sieves and in the pan.

Calculate the percent mass of the total proppant sample retained on each sieve and in the pan. The cumulative mass shall be within 0.5 % of the sample mass used in the test. If not, the sieve analysis shall be repeated using a different sample.

Table 1 — Sieve sizes <sup>a</sup>

Sieve-opening sizes μm											
	3 350/ 1 700	2 360/ 1 180	1 700/ 1 000	1 700/ 850	1 180/ 850	1 180/ 600	850/ 425	600/ 300	425/ 250	425/ 212	212/ 106
Typical proppant/gravel-pack size designations											
	6/12	8/16	12/18	12/20	16/20	16/30	20/40	30/50	40/60	40/70	70/140
Stack of ASTM sieves <sup>b</sup>											
First primary sieve in bold type	4	6	8	8	12	12	16	20	30	30	50
	<b>6</b>	<b>8</b>	<b>12</b>	<b>12</b>	<b>16</b>	<b>16</b>	<b>20</b>	<b>30</b>	<b>40</b>	<b>40</b>	<b>70</b>
	8	10	14	14	18	18	25	35	45	45	80
Second primary sieve in bold type	10	12	16	16	<b>20</b>	20	30	40	50	50	100
	<b>12</b>	14	<b>18</b>	18	25	25	35	45	<b>60</b>	60	120
	14	<b>16</b>	20	<b>20</b>	30	<b>30</b>	<b>40</b>	<b>50</b>	70	<b>70</b>	<b>140</b>
	16	20	30	30	40	40	50	70	100	100	200
	pan	pan	pan	pan	pan	pan	pan	pan	pan	pan	pan
<sup>a</sup> Sieve series as defined in ASTM E11. <sup>b</sup> Sieves stacked in order from top to bottom.											

## 6.5 Calculation of the mean diameter, median diameter and standard deviation

### 6.5.1 General

The mean diameter,  $d_{av}$ , shall be used to characterize the proppant distribution for hydraulic fracturing. The median diameter,  $d_{50}$ , shall be used to characterize gravel-packing distributions. This is in addition to the mesh-size characterization described in 6.4.

### 6.5.2 Mean diameter

The mean diameter,  $d_{av}$ , expressed in millimetres, is calculated as given in Equation (1):

$$d_{av} = \frac{\sum n \cdot d}{\sum n} \quad (1)$$

where  $n \cdot d$  is the product of mid-size diameter ( $d$ ) multiplied by frequency of occurrence ( $n$ ).

EXAMPLE Calculation of the mean diameter for a 16/30 proppant with the following size distribution; see Table 2:

+12 mesh	(1 700 μm)	0.0 %
+16 mesh	(1 180 μm)	1.2 %
+18 mesh	(1 000 μm)	37.9 %
+20 mesh	(850 μm)	48.7 %
+25 mesh	(710 μm)	11.9 %
+30 mesh	(600 μm)	0.3 %
+40 mesh	(425 μm)	0.0 %
Pan		0.0 %
TOTAL		100.0 %



Table 2 — Parameters for mean diameter calculation

US mesh size	Particle-size interval $\mu\text{m}$	Mid size $d$ $\mu\text{m}$	Frequency of occurrence $n$ % by mass	$n \cdot d$
10 to 12	2 000 to 1 700	1 850	0.0	0
12 to 16	1 700 to 1 180	1 440	1.2	1 728
16 to 18	1 180 to 1 000	1 090	37.9	41 311
18 to 20	1 000 to 850	925	48.7	45 047
20 to 25	850 to 710	780	11.9	9 282
25 to 30	710 to 600	655	0.3	197
	TOTAL		100.0	97 565

Therefore, the mean diameter,  $d_{av} = \sum n \cdot d / \sum n = 97\,565 / 100.0 = 975.7 \mu\text{m} = 0.976 \text{ mm} (0.038 \text{ in})$ .

### 6.5.3 Median diameter

In gravel-packing, the median diameter,  $d_{50}$  (the fiftieth mass percentile), which is commonly used, is calculated as follows.

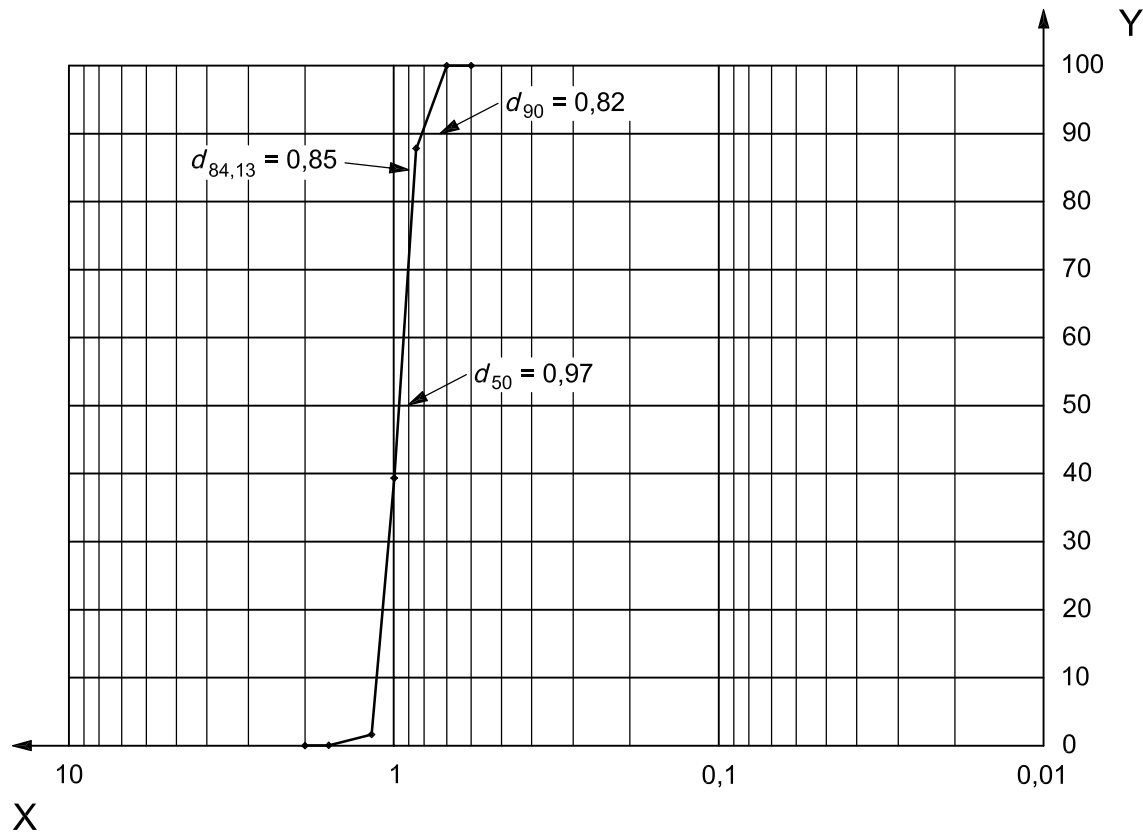
Determine the percent of the sample retained on each screen. This is done by dividing the mass retained on the screen by the total cumulative mass (not the original mass) and multiplying by 100. Determine the cumulative percent retained for each screen by adding the percent retained on that screen with the percents retained on the larger screens that are above it. The cumulative percent of the material retained by all the screens and the pan should be 100 %.

Plot a particle-size distribution curve with cumulative percent on the  $y$ -axis versus log of sieve opening on the  $x$ -axis, which is inverted so that the scale is smaller to the right and larger to the left. The sieve size can be plotted as microns, millimetres or inches. A plot of the example in 6.5.2 is plotted in Figure 4. Reading the graph at 50 % cumulative mass (on the  $y$ -axis) gives the  $d_{50}$  grain-size diameter (on the  $x$ -axis) of 0.97 mm (0.038 in).

$d_{50}$  is also the median diameter, which is the size at which 50 % of the particles are smaller and 50 % are larger. In this example, the mean and median are very close together. This might not be the case in highly skewed distributions.

From Figure 4 other common criteria, such as  $d_{90}$ , and standard deviation,  $\sigma$ , can be determined. Reading the graph at 90 % cumulative mass (on the  $y$ -axis) gives the  $d_{90}$  grain-size diameter (on the  $x$ -axis) of 0.82 mm (0.032 in).

The standard deviation,  $\sigma$ , is calculated from the expression  $d_{84,13}/d_{50} = 0.85 \text{ mm} / 0.97 \text{ mm} = 0.88$ .



#### Key

X size, expressed in millimetres

Y cumulative percent

**Figure 4 — Graphical determination of  $d_{50}$ ,  $d_{90}$  and  $d_{84,13}$**

## 6.6 Sieve calibration

### 6.6.1 Purpose

It is necessary to check sieves against a master set because sieves are not perfect and are subject to wear. This is true for both new and used sieves and for matched and unmatched sieves. Optical examination of any sieve shows the openings vary in both size and shape. Calibration is a means by which the extent and the effect of the opening differences can be determined. It is also a means to compensate for manufactured differences in sieves to ensure consistency in sieve analysis.

### 6.6.2 Description

A stack of master sieves is used to check working sieves. This master stack should be used very sparingly to prevent major changes in the openings. The master stack consists of certified sieves that are optically calibrated on an annual basis, typically by the original equipment manufacturer, to ensure that the sieves are in accordance with latest revision of ASTM E11. If any sieve fails the ASTM E11 specification, the sieve shall be replaced with a new certified sieve. Storage of sieves shall be done in such a manner as to prevent deterioration and/or damage.

### 6.6.3 Procedure

Place a calibration sample (see 6.6.4) into the master sieve stack and complete sieve analysis according to 6.4. The load retained on each master sieve is considered the master load for calculation purposes.

This calibration sample is then placed into the working sieve stack and sieve analysis is completed according to 6.4. The load retained on each working sieve is considered the working load for calculation purposes. If the total test sample mass exceeds  $\pm 0.2\%$  difference from the master stack to the working stack, repeat the test. Calculate the difference,  $D$ , as given in Equation (2), the % difference,  $D'$ , as given in Equation (3), absolute deviation,  $\delta_A$ , as given in Equation (4), and % absolute deviation,  $\delta'_A$ , as given in Equation (5). If the percent absolute deviation exceeds 10 % between the master sieve set and the working/supplier sieve, the difference should be considered when comparing results to sieve recommendations. If the absolute deviation exceeds 25 %, the working sieve shall be replaced.

$$D = m_{WS} - m_{MS} \quad (2)$$

$$D' = (D/m_{MS}) \times 100 \quad (3)$$

where

$D$  is the difference, expressed in millimetres;

$D'$  is the difference, expressed in percent;

$m_{MS}$  is the mass retained on each sieve in the master set;

$m_{WS}$  is the mass retained on each sieve in the working set.

NOTE For the top sieve of the stack, the absolute deviation equals the difference. This number can be positive or negative.

Absolute deviation is calculated from Equation (4):

$$\delta_{A,S(I)} = \delta_{A,S(I-1)} + D_{S(I)} \quad (4)$$

where

$\delta_{A,S(I)}$  is the absolute deviation of the sieve of interest, expressed in millimetres;

$\delta_{A,S(I-1)}$  is the absolute deviation of the preceding sieve;

$D_{S(I)}$  is the difference for the sieve of interest.

Percent absolute deviation,  $\delta'_{A,S(I-1 \pm D)}$ , is calculated from Equation (5):

$$\delta'_{A,S(I-1 \pm D)} = (\delta_{A,S(I-1 \pm D)} / m_{MS}) \times 100 \quad (5)$$

where  $\delta_{A,S(I-1 \pm D)}$  is the absolute deviation of preceding sieve  $\pm D_{S(I)}$ , the difference for the sieve of interest.

NOTE The word “absolute” is not referring to the mathematical absolute function.

EXAMPLE Example calculation for 25-mesh sieve; see Table 3:

— from Equation (2):  $D = 10.5 - 10.1 = 0.4$

— from Equation (3):  $D' = (0.4/10.1) 100 = 4.0$

- from Equation (4):  $\delta_{A,S(l)} = 1.8 + 0.4 = 2.2$
- from Equation (5):  $\delta'_{A,S(l-1 \pm D)} = (2.2/10.1) 100 = 22.0$

**Table 3 —Absolute deviation example**

Sieve mesh size	$m_{Ms}$ g	$m_{Ws}$ g	$D$ mm	$D'$ %	$\delta_{A,S(l)}$ mm	$\delta'_{A,S(l)}$ %
12	9.4	10.0	0.6	6.4	0.6	6
16	10.9	11.7	0.8	7.3	1.4	13
18	9.5	9.2	-0.3	-3.1	1.1	12
20	9.5	10.2	0.7	7.4	1.8	19
25	10.1	10.5	0.4	4.0	2.2	22
30	10.0	9.9	-0.1	-1.0	2.1	21
35	11.4	10.9	-0.5	-4.4	1.6	14
40	9.3	9.2	-0.1	-1.1	1.5	16
50	10.1	9.2	-0.9	-8.9	0.6	6
70	8.8	8.9	0.1	1.1	0.7	8
Pan	0.9	0.4	—	—	—	—

#### 6.6.4 Preparing calibration samples

A sieve calibration sample is prepared by blending sized samples. To prepare the sized samples, first determine the specific mesh material(s) needed. Assemble a sieve stack that covers these mesh sizes and place a pan at the bottom.

Place  $100 \text{ g} \pm 20 \text{ g}$  of media that has been identified as a source for test material onto the top sieve and cover with a lid. Place the sieve stack into the sieve shaker and shake for 10 min. The mass of media used should be optimized without exceeding 35 g on any sieve.

Remove the stack from the sieve shaker and then remove the lid. Carefully remove the top sieve and invert onto a recovery pan. Place the material from the recovery pan into a storage container labelled specifically for this mesh-sized material. Return the sieve to the recovery pan. Brush any remaining material from the sieve and discard this material. Repeat for each sieve.

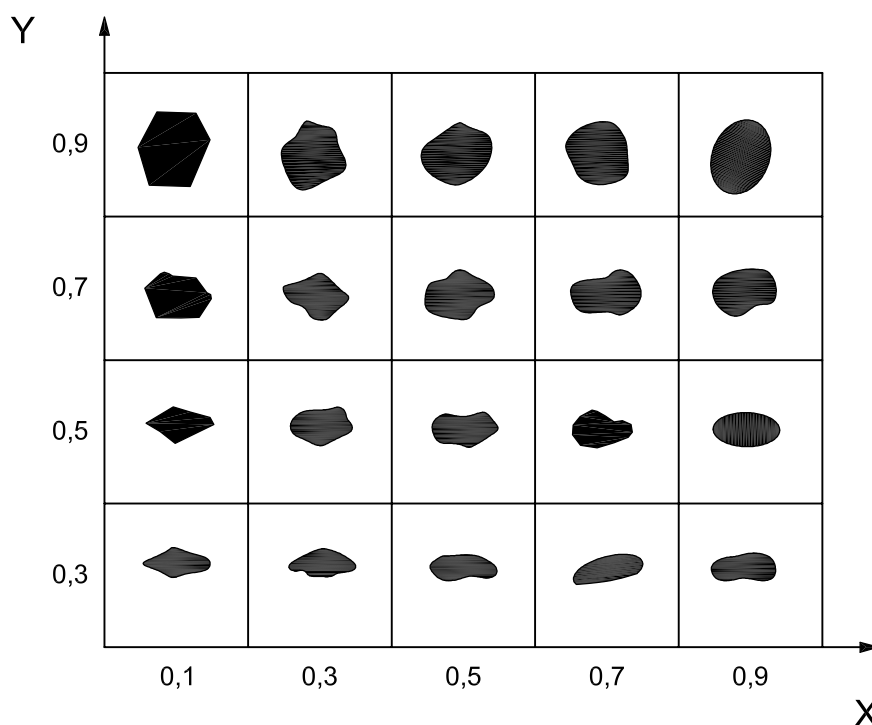
Select the sieve mesh sizes to be tested based on Table 1. For each sieve mesh size, weigh out approximately 10 g of correspondingly sized material. Blend the sized material together to form a calibration standard.

## 7 Proppant sphericity and roundness

### 7.1 Purpose

The purpose of this procedure is to evaluate and report proppant shapes.

## 7.2 Description



### Key

X roundness

Y sphericity

**Figure 5 — Chart for visual estimation of sphericity and roundness**

The common particle shape parameters that have been found to be useful for visually evaluating proppants are sphericity and roundness. This procedure finds its greatest utility in the characterization of new proppant deposits and new sources of man-made proppants. The most widely-used method of determining roundness and sphericity is the use of the Krumbien/Sloss chart (see Figure 5). Sphericity is a measure of how close a proppant particle approaches the shape of a sphere. Roundness is a measure of the relative sharpness of corners or of curvature. These measurements must be determined separately. Distinct measurement methods utilizing photographic or digital technology are available and are acceptable.

## 7.3 Apparatus capability

The apparatus shall have the following capabilities:

- 10 times to 40 times magnification microscope or equivalent;
- analytical balance, accuracy to 0.001 g.

## 7.4 Procedure

**7.4.1** Using the split sample (see 5.2) and the sample splitter, further reduce the sample to 5 g to 15 g. If a small sample splitter is available, then the reduced sample amount can be safely reduced further to 1 g or 2 g.

**7.4.2** Place the reduced sample onto a suitable background, spread it out to a one-particle-thickness layer, and view it through a microscope at low magnification (10 times to 40 times magnification). Choose a darker background colour for a light-coloured proppant and, conversely, choose a lighter background colour for dark particles.

**7.4.3** Randomly select at least 20 individual particles in the field of view for evaluation of particle sphericity.

**7.4.4** Determine the sphericity of each selected particle by comparison to the chart provided, refer to Figure 5. Record the assigned sphericity number for each particle selected.

**7.4.5** Calculate the arithmetic average of the recorded sphericity numbers and report as average particle sphericity to the nearest 0.1 units.

**7.4.6** Using the same individual particles selected in 7.4.3, determine the roundness of each particle. Record the assigned roundness number for each particle selected.

**7.4.7** Calculate the arithmetic average of the recorded roundness numbers and report as average particle roundness to the nearest 0.1 units.

## **7.5 Alternate method for determining average sphericity and roundness**

### **7.5.1 Use of photomicrographs**

Photomicrographs of a representative proppant sample are used to provide identical, suitably enlarged reproductions for the determination of average sphericity and roundness for the reduced proppant sample. A scanning electron microscope, a reflected-light microscope fitted with a camera, a fixed camera with bellows and a wide-angle lens, digital camera and/or other appropriate photographic equipment can be successfully used to produce suitable photomicrographs of known magnification. The choice of equipment to use becomes a matter of individual preference and availability.

### **7.5.2 Procedure**

Follow the procedure in 7.4, except use the photographic equipment of choice. Numbering each selected particle in the image limits confusion and assures the same particles are used for both the sphericity and the roundness determinations.

### **7.5.3 Suggested magnification for photomicrographs**

For designated proppant size ranges, the magnifications are shown in Table 4.

**Table 4 — Suggested magnification**

<b>Proppant size ranges</b>	<b>Photomicrograph magnification</b>
6/12 through 12/20	15 times
16/20 through 20/40	30 times
30/40 through 70/140	40 times

## 8 Acid solubility

### 8.1 Purpose

The acid-solubility procedures are used to determine the suitability of a proppant for use in applications where the proppant can come into contact with acids.

### 8.2 Description

The preferred method of testing acid solubility is using a solution of 12:3 HCl:HF acid (i.e. 12 % by mass of HCl and 3 % by mass of HF; see 8.4.2). However, the following procedural example shall not preclude the testing of materials in other acids, such as hydrochloric and organic acids, depending on desired application for the proppant.

The solubility of a proppant in 12:3 HCl:HF is an indication of the amount of soluble materials (i.e. carbonates, feldspars, iron oxides, clays, etc) present in the proppant.

### 8.3 Equipment and materials

**8.3.1 Hydrochloric acid**, HCl, concentrated (37 %), reagent grade of known concentration.

**8.3.2 Ammonium bifluoride**, (NH<sub>4</sub>F<sub>2</sub>), reagent grade.

**8.3.3 Balance**, 0.001 g accuracy.

**8.3.4 Water bath**, 66 °C (150 °F).

**8.3.5 Oven**, 105 °C (221 °F).

**8.3.6 Beaker**, 150 ml to 200 ml capacity, high-density polyethylene or polypropylene.

**8.3.7 Graduated cylinder or volumetric flask**, 1 000 ml, high-density polyethylene or polypropylene.

**8.3.8 Analytical filtering apparatus**, acid-resistant (porcelain, high-density polyethylene or polysulfone), using a vacuum-filtering technique with a Gooch-style <sup>1)</sup> or Buchner-style <sup>2)</sup> filtering crucible.

**8.3.9 Filter paper circles**, cellulose-based, acid-resistant, sufficient to prevent the loss of the sample.

The test procedure requires one or more filter papers with a diameter of 21 mm (0.83 in) for the Gooch crucible and 19.1 mm (0.75 in) for the Buchner crucible.

**8.3.10 Timer**, accurate to ± 5 s.

**8.3.11 Desiccator**.

---

1) Gooch-style filtering crucible is an example of a suitable product available commercially. This information is given for the convenience of users of this part of ISO 13503 and does not constitute an endorsement by ISO and API of this product.

2) Buchner-style filtering funnel is an example of a suitable product available commercially. This information is given for the convenience of users of this part of ISO 13503 and does not constitute an endorsement by ISO and API of this product.

## 8.4 Procedure

### 8.4.1 General

Representative samples shall be taken from the sample splitter; do not sieve the sample. Samples should not be subjected to the crush-resistance test or ground prior to the acid-solubility analysis, but rather the analysis shall be performed on the unaltered proppant.

**WARNING — Extreme caution and proper protective equipment shall be used at all times when handling acid. For more information consult material safety data sheets or chemical manufacturer.**

### 8.4.2 Preparation of 12:3 HCl:HF solution

**8.4.2.1** Prepare a solution of 12:3 HCl:HF acid [specific gravity = 1.08 at 15.6 °C (60 °F)] as follows:

**8.4.2.2** To 500 ml of distilled water contained in a polyethylene or polypropylene 1 000 ml graduated cylinder or volumetric flask, add 46.23 g of pure  $\text{NH}_4\text{F}_2$  and dissolve. The actual mass of  $\text{NH}_4\text{F}_2$  of less than 100 % purity to be added is equal to 46.23 g divided by the purity of  $\text{NH}_4\text{F}_2$ , expressed as a mass fraction.

**8.4.2.3** Add 361 ml 37 % HCl [specific gravity of 1.19 at 15.6 °C (60 °F)]. Adjust volume for different concentrations of hydrochloric acid.

**8.4.2.4** Dilute to 1 000 ml with distilled water.

**8.4.2.5** Stir to ensure complete mixing.

### 8.4.3 Solubility test

**8.4.3.1** Weigh 5 g of proppant to the nearest mg into a tared sample pan. The proppant should be dried at 105 °C (221 °F) to a constant mass and cooled in a desiccator. Record mass,  $m_s$ .

**8.4.3.2** Add the proppant sample to a 150 ml polyethylene breaker containing 100 ml of the acid solution prepared in 8.4.2. Cover the breaker with a polyethylene watch glass. The acid and the samples should be at room temperature [ $22\text{ °C} \pm 3\text{ °C}$  ( $72\text{ °F} \pm 5\text{ °F}$ )].

**8.4.3.3** Place the beaker in a 66 °C (150 °F) water bath for 30 min. Do not stir.

**8.4.3.4** Dry the funnel and filter paper in an oven at 105 °C (221 °F) for a minimum of 1 h or until constant mass; weigh and record the mass,  $m_F$ . The filter medium should not be weighed hot, but should first be allowed to cool in a desiccator.

**8.4.3.5** Transfer the sample and acid mixture from the beaker to the filtering apparatus. Filter the sample through the pre-weighed filter crucible (funnel), being sure to transfer all particles from the beaker to the filter. Vacuum-filtering techniques shall be used to remove the acid within 1 min.

**8.4.3.6** Wash the sample in the filtering apparatus three times with 20 ml portions of distilled water.

**8.4.3.7** Dry the filter and retained sample at 105 °C (221 °F) for a minimum of 1 h or until a constant mass is obtained. Cool the filter and sample in a desiccator before weighing. Weigh filter and sample and record the mass,  $m_{FS}$ .

**8.4.3.8** Calculate  $S$ , the acid solubility, expressed in percent, of the proppant using Equation (6) and report the result:



$$S = \frac{(m_s + m_F - m_{FS})}{m_s} \times 100 \quad (6)$$

where

$m_s$  is the sample mass, expressed in grams;

$m_F$  is the mass of filter, expressed in grams;

$m_{FS}$  is the dried mass of filter containing proppant, expressed in grams.

## 9 Turbidity test

### 9.1 Purpose

The purpose of this procedure is to determine the amount of suspended particles or other finely divided matter present.

### 9.2 Description

In general, turbidity tests measure an optical property of a suspension that results from the scattering and absorption of light by the particulate matter suspended in the wetting fluid. The higher the turbidity number the more suspended particles are present. In most commercial turbidity meters, the incident light beam is normal to the detection path of the detector; this is the preferred method of measurement. The results are expressed in FTU and/or NTU. Alternate methods may be used but shall be correlated with the method given in this part of ISO 13503.

### 9.3 Equipment and materials

The following is a list of materials and equipment for turbidity measurements:

**9.3.1 Formazin calibration standards;** see Annex A.

**9.3.2 Spectronic** <sup>3)</sup>, set at a wavelength of 450 nm, or **turbidimeter**, such as Hach 2100A <sup>4)</sup> or equivalent.

**9.3.3 Wrist-Action® Shaker** <sup>5)</sup>.

**9.3.4 Syringe.**

### 9.4 Equipment calibration

Equipment calibration shall be performed in accordance with procedures designated by the original equipment manufacturer or an outside calibration service.

3) Spectronic is an example of a suitable product available commercially. This information is given for the convenience of users of this part of ISO 13503 and does not constitute an endorsement by ISO and API of this product.

4) Hach 2100A is an example of a suitable product available commercially. This information is given for the convenience of users of this part of ISO 13503 and does not constitute an endorsement by ISO and API of this product.

5) Wrist-Action® Shaker bottle capacity is an example of a suitable product available commercially. This information is given for the convenience of users of this part of ISO 13503 and does not constitute an endorsement by ISO and API of this product.

## 9.5 Procedure

**9.5.1** Using the sample splitter, reduce the sample size to  $50\text{ g} \pm 20\text{ g}$ . Measure  $20\text{ ml} \pm 1\text{ ml}$  of a dry proppant sample and add it, plus  $100\text{ ml} \pm 5\text{ ml}$  of demineralized water, to a 250 ml Erlenmeyer flask having a wide mouth and a screw cap. Allow to stand for  $30\text{ min} \pm 1\text{ min}$ .

**9.5.2** Set the frequency of the Wrist-Action® Shaker to the maximum range of 10. Allow the Wrist-Action® Shaker to shake for  $30\text{ s} \pm 5\text{ s}$ . Remove the flask and allow to stand for  $5\text{ min} \pm 1\text{ min}$ .

**9.5.3** Using a syringe, extract 25 ml of the water and silt suspension from near the centre of the water volume. Care should be taken not to extract any proppant particles, as this distorts the results.

**9.5.4** Place the suspended-particle sample in a test vial and place in a calibrated turbidity meter or Spectronic 20<sup>6)</sup>.

**9.5.5** Record the sample turbidity in FTU (NTU).

## 10 Procedures for determining proppant bulk density, apparent density and absolute density

### 10.1 Purpose

The purpose of the procedure is to determine the bulk density,  $\rho_{\text{bulk}}$ , apparent density,  $\rho_{\text{p}}$ , and absolute density,  $\rho_{\text{abs}}$ , of the proppant.

### 10.2 Description

The bulk density, apparent density and absolute density are important properties of proppants. Bulk density describes the mass of proppant that fills a unit volume and includes both proppant and porosity. It is used to determine the mass of a proppant needed to fill a fracture or storage tank. Apparent density is measured with a low-viscosity fluid that wets the particle surface and includes the pore space inaccessible to the fluid. On the other hand, the absolute density excludes pores that can be in the proppant as well as void spaces between proppant.

### 10.3 Bulk density

NOTE This procedure is based on ANSI B74.4.

#### 10.3.1 Equipment and materials

An apparatus, consisting of the following parts (see Figure 6), is used to determine the bulk density,  $\rho_{\text{bulk}}$ .

**10.3.1.1 Funnel stand**, consisting of a square,  $304.8\text{ mm} \times 304.8\text{ mm}$  (12 in  $\times$  12 in) metal base with a tripod  $304.8\text{ mm}$  (12 in) high.

The upper part of the tripod shall consist of a horizontal circular platform,  $203.2\text{ mm}$  (8 in) in diameter, forming a support for a funnel, which is replaceable and adjustable and fastened in place by screws.

**10.3.1.2 Funnel**, stainless steel, having smooth inside seams and a shut-off at the outlet consisting of a  $34.9\text{ mm}$  (1 3/8 in) rubber ball attached to the funnel by two coil springs of such strength that a firm seal is made.

---

6) Spectronic 20 is an example of a suitable product available commercially. This information is given for the convenience of users of this part of ISO 13503 and does not constitute an endorsement by ISO and API of this product.

The funnel shall have the following dimensions:

- top diameter (inside): 114.3 mm  $\pm$  0.4 mm (4 1/2 in  $\pm$  1/64 in);
- bottom diameter (inside): 12.7 mm  $\pm$  0.4 mm (1/2 in  $\pm$  1/64 in);
- height of sloping section: 76.2 mm  $\pm$  0.4 mm (3 in  $\pm$  1/64 in);
- height of parallel section: 12.7 mm  $\pm$  0.4 mm (1/2 in  $\pm$  1/64 in).

**10.3.1.3 Brass cylinder**, of approximately 100 cm<sup>3</sup> (6.10 in<sup>3</sup>) capacity, calibrated with water as described in 10.3.2.

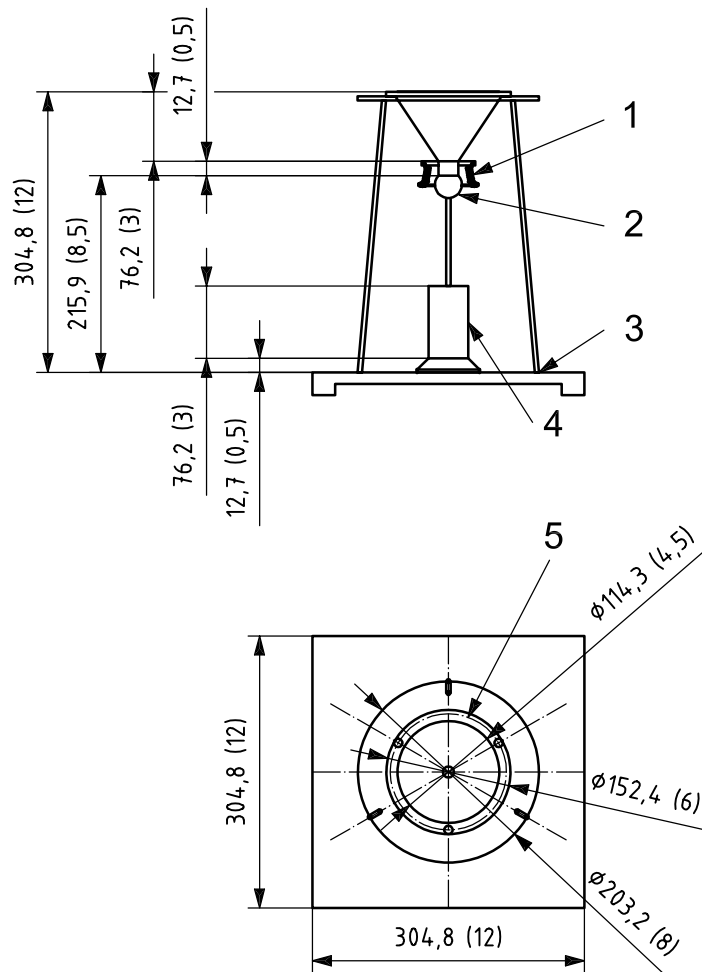
The cylinder shall be made of No. 17 gauge brass, seamless tubing and shall have the following dimensions:

- inside diameter: 38.9 mm (1 17/32 in). Brass tube inside diameter shall be within the tolerances normal to high grade commercial tubing;
- height: 84.1 mm  $\pm$  0.4 mm (3 5/16 in  $\pm$  1/64 in);
- base thickness: 12.7 mm  $\pm$  0.4 mm (1/2 in  $\pm$  1/64 in).

The bottom surface of the base shall be recessed to centre the cylinder directly under the funnel discharge by means of a mating pin in the bottom plate.

NOTE Non-essential dimensions of the apparatus can be adjusted at the convenience of the user.

Dimensions in millimetres (inches)

**Key**

- 1 spring, 9.525 mm (0.38 in) diameter
- 2 rubber ball stop, 30.48 mm (1.25 in) diameter
- 3 legs, 4.8 mm (0.19 in) diameter, welded to base
- 4 cylinder, 38.1 mm (1.50 in) internal diameter
- 5 3 holes on 139.7 mm (5.50 in) diameter

**Figure 6 — Bulk density device****10.3.2 Calibration of cylinder**

Prior to use, determine the volume of the cylinder as follows.

**10.3.2.1** Weigh the dry, empty cylinder with a flat glass plate (slicker plate) and record as  $m_{f+gp}$ .

**10.3.2.2** Fill the cylinder with water and slide the plate into contact with the upper edge of the cylinder cutting off the water precisely in the plane of the edge.

**10.3.2.3** With the glass plate held firmly in place, wipe off the excess water and obtain the gross mass,  $m_{f+gp+l}$ .

**10.3.2.4** Calculate the volume,  $V_{cyl}$ , expressed in cubic centimetres, of the cylinder as given in Equation (7):

$$V_{cyl} = m_w / 0.997 \text{ 1} \quad (7)$$

where

$m_w$  is the net mass, expressed in grams, of water, equal to  $m_{f+gp+l} - m_{f+gp}$ ;

0.997 1 is the density of water; the temperature of the test fluid shall not be less than 18.3 °C (65 °F) and not more than 28.4 °C (85 °F).

### 10.3.3 Procedure

**10.3.3.1** Weigh the dry, empty cylinder and record as  $m_f$ .

**10.3.3.2** The sample of proppant to be tested shall have a temperature of not less than 18.3 °C (65 °F) and not more than 28.4 °C (85 °F). Fill a 150 ml beaker with the proppant sample.

**10.3.3.3** With the funnel outlet closed and the cylinder centred under the outlet of the funnel, pour the sample from the beaker into the funnel.

**10.3.3.4** Move the ball above to the right or left of the opening at the bottom of the funnel and allow the proppant to fall freely to fill the cylinder.

**10.3.3.5** Immediately after the funnel is emptied, smoothly pass a straight edge once across in contact with the edge of the cylinder to level the surface of the proppant. It is important to avoid vibration and shock or any disturbing factor.

**10.3.3.6** Weigh the proppant-filled cylinder and record as  $m_{f+p}$ .

**10.3.3.7** Calculate the bulk density,  $\rho_{bulk}$ , expressed in grams per cubic centimetre, as given in Equation (8):

$$\rho_{bulk} = \frac{m_p}{V_{cyl}} \quad (8)$$

where

$m_p$  is the net mass, expressed in grams, of the proppant, equal to  $m_{f+p} - m_f$ ;

$V_{cyl}$  is the volume of the cylinder, expressed in cubic centimetres.

## 10.4 Apparent density

### 10.4.1 Equipment and materials

The following equipment is needed to determine apparent density,  $\rho_p$ , of proppants in kerosene.

**10.4.1.1 Analytical balance**, 0.01 g precision.

**10.4.1.2 Weighing boat**.

**10.4.1.3 Pycnometer**, calibrated, 25 ml or 50 ml.

**10.4.1.4 Test liquid**, low-viscosity, paraffinic oil, kerosene or similar oil, with a maximum viscosity less than 5 cP at the temperature of use.

**10.4.1.5 Funnel**, with stem to fit inside the pycnometer.

## 10.4.2 Procedure

**10.4.2.1** Calibrate the volume of the pycnometer as given in 10.3.2.

**10.4.2.2** Weigh the dry, empty pycnometer and record the mass as  $m_f$ .

**10.4.2.3** Carefully fill the pycnometer to the fill line with test fluid at ambient temperature. Make certain that no air bubbles are trapped in the liquid and that the test fluid has been wiped off the outer surface of the pycnometer.

**10.4.2.4** Weigh the test-fluid-filled pycnometer to 0.01 g precision and record the mass as  $m_{f+l}$ .

**10.4.2.5** Tare the weighing dish, then add approximately 10 g of proppant sample, weigh the dish and sample to 0.01 g precision, calculate the mass of the proppant and record it as  $m_p$ .

**10.4.2.6** Pour out approximately one-half the volume of liquid in the pycnometer and transfer the weighed proppant sample from the weighing dish to the pycnometer. A funnel that fits into the neck of the pycnometer should be used.

**10.4.2.7** Carefully add sufficient test liquid at ambient temperature to the pycnometer and fill to the fill line. Rotate the flask about its vertical axis until all air bubbles have been dislodged from the proppant. Refill the test liquid to the fill line, if necessary, and wipe off any test liquid on the flask surface.

**10.4.2.8** Weigh the flask containing proppant and test liquid to 0.01 g precision and record as  $m_{f+l+p}$ .

Look up the density or calculate the test-liquid density,  $\rho_l$ , expressed in grams per cubic centimetre, from Equation (9):

$$\rho_l = \frac{m_{f+l} - m_f}{V_{\text{pyc}}} \quad (9)$$

where

$m_{f+l}$  is the mass, expressed in grams, of the flask filled with test liquid at room temperature;

$m_f$  is the mass, expressed in grams, of the empty, dry flask;

$V_{\text{pyc}}$  is the volume, expressed in cubic centimetres, of the pycnometer.

Calculate the apparent density,  $\rho_p$ , expressed in grams per cubic centimetre, from Equation (10):

$$\rho_p = \frac{m_p \rho_l}{m_{f+l} + m_p - m_{f+l+p}} \quad (10)$$

where

$m_p$  is the mass, expressed in grams, of proppant;

$m_{f+l}$  is the mass, expressed in grams, of the flask and liquid at room temperature;

$m_{f+l+p}$  is the mass, expressed in grams, of flask, liquid and proppant at room temperature;

$\rho_l$  the test liquid density, expressed in grams per cubic centimetre.

Report the apparent density, expressed in grams per cubic centimetre, and the amount of liquid used in the test.

## 10.5 Absolute density

### 10.5.1 Description

The preferred method to determine absolute density,  $\rho_{abs}$ , is a method that is based on Boyle's Law; the pressure upon filling the sample chamber and then discharging into a second empty chamber allows the computation of the sample solid phase volume. The recommended gas is helium, but nitrogen or dry air is an acceptable alternative.

### 10.5.2 Equipment

**10.5.2.1 Pycnometer**, with a typical recommended reproducibility to within 0.02 % of the nominal full-scale volume on a clean, dry, thermally-equilibrated sample.

Such instruments are commercially available <sup>7)</sup>.

**10.5.2.2 Analytical balance**, 0.001 g accuracy.

**10.5.2.3 Desiccator**.

### 10.5.3 Procedures

**10.5.3.1** The volume of proppant is dependent upon the volume of the sample cup. The proppant should be dried at 105 °C (221 °F) to a constant mass and cooled to room temperature in a desiccator. Record the sample mass,  $m_s$ .

**10.5.3.2** Check the gas-comparison pycnometer for zero measurement and calibration as specified in the instruction manual for the specific pycnometer being used.

**10.5.3.3** Place the sample cup with proppant in the pycnometer sample compartment and lock firmly in place. Purge the sample compartment with gas at a pressure not exceeding 13.8 kPa (2 psi).

**10.5.3.4** Measure the sample volume by the standard manufacturer's procedures. Ten gas purges of the sample and five measurements are recommended. The absolute density is calculated by dividing  $m_s$  by the determined sample volume.

**10.5.3.5** Report the value of the absolute density to two decimal places.

## 11 Proppant crush-resistance test

### 11.1 Purpose

Crush-resistance tests are conducted on samples to determine the amount of proppant crushed at a given stress.

---

7) The AccuPyc 1330™ Pycnometer manufactured by Micromeritics Instrument Corporation is an example of a suitable device available commercially. This information is given for the convenience of users of this part of ISO 13503 and does not constitute an endorsement by ISO and API of this product.

## 11.2 Description

This test is useful for determining and comparing the crush-resistance of proppants. Tests are conducted on samples that have been sieved so that all particles tested are within the specified size range. The amount of proppant material crushed at each stress level is measured. Evaluation of test results should provide indications of the stress level where proppant crushing is excessive and the maximum stress to which the proppant material should be subjected.

## 11.3 Equipment and materials

The following equipment and materials are required for conducting the proppant crush-resistance test:

**11.3.1 Hydraulic load frame**, with the capacity to apply the load required for accomplishing the stress levels up to 103 MPa (15 000 psi).

The load frame shall have platens that can be maintained parallel during application of load to the cell. The load frame shall be calibrated at least annually and after all major repairs, to ensure that stress measurements are accurate to within 5 %, or an independent calibrated load-measuring device should be used when the load is applied to the cell. The stress shall never exceed the target value by more than 5 % (see 11.5.10). Automated load frames are highly recommended.

**11.3.2 Cell for proppant crush-resistance test**, as described in Figure 7, or equivalent.

The piston length shall be 88.9 mm (3 1/2 in) and the piston diameter shall be 50.8 mm (2 in) and shall have a Rockwell C hardness of 43 or better (Rockwell C 60 preferred). Periodic inspection for internal diameter wear indicates when the cell should be replaced. When the internal diameter of the lower portion of the cell exceeds the designed diameter by more than 3.25 % (–10 % increase in cross-sectional area), the cell shall be replaced;

**11.3.3 Testing sieves**, pan and lid, see Clause 6 for appropriate sieve numbers (sizes).

**11.3.4 Balance**, for weighing proppant sample and sieve fractions to 0.1 g precision or better.

**11.3.5 Testing sieve shaker**, see 6.3.2.

**11.3.6 Timer**, capable of measuring to  $\pm 5$  s.

**11.3.7 Sample splitter**, metal; see Figure 3.

**11.3.8 Metal beaker or weighing boat**. Plastic, glass or paper containers tend to generate static electrical charge and should be avoided.

## 11.4 Sample preparation

**11.4.1** Using the sample splitter, reduce the sample size to 80 g to 120 g.

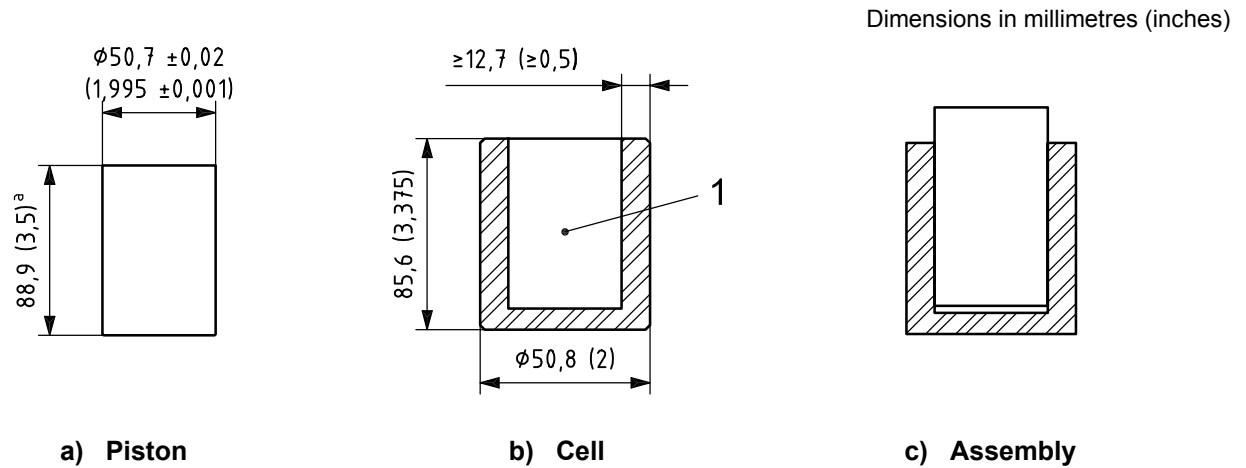
**11.4.2** Refer to Table 1 and select the first and last primary sieve sizes appropriate for the proppant being tested. Prepare the sieve stack consisting only of the first and the second primary sieves and place the sieve stack in the sieve shaker.

**11.4.3** Pour the reduced sample into the top sieve and cover with the lid.

**11.4.4** Properly secure the sieve stack in the shaker and shake for 10 min.

**11.4.5** Remove the sieve stack from the shaker and discard all material retained on the upper sieve and in the pan. Only the material retained on the second primary sieve is used in the crush test.



**Key**

1 bottom plate, 9.52 mm (0.375 in)

<sup>a</sup> Material is 4340 alloy steel with a Rockwell hardness of > 43.

**Figure 7 — Crush cell**

## 11.5 Crush-resistance procedure

**11.5.1** Determine the exact mass of proppant to be used in the crush-resistance test procedure by performing the following;

**11.5.1.1** Determine the loose-pack bulk density of the proppant sample using the procedure in 10.3.

**11.5.1.2** The mass of proppant used in a test shall fill the volume to such a level as to result in a load of 1.95 g/cm<sup>2</sup> (4.00 lb/ft<sup>2</sup>) of 20/40 proppant on the piston area. As the loose-pack bulk density of 20/40 sand is approximately 1.60 g/cm<sup>3</sup> (100 lb/ft<sup>3</sup>), the volume of 20/40 sand required per unit of piston area of the test cell is 1.95/1.60 = 1.22 cm<sup>3</sup> of proppant per square centimetre of area. In a test cell with an inside diameter of 50.8 mm (2.00 in), the volume needed is 24.7 cm<sup>3</sup>.

Other proppants with different bulk densities require different masses. The mass,  $m_p$ , expressed in grams, of proppant material needed for each test (to the nearest 0.1 g) is calculated according to Equation (11):

$$m_p = 24.7 \times \rho_{\text{bulk}} \quad (11)$$

where  $\rho_{\text{bulk}}$  is the proppant bulk density, expressed in grams per cubic centimetre.

**11.5.2** Using the sample splitter, reduce the sieved sample to the calculated  $m_p$  plus no more than 5 g.

**11.5.3** Weigh out the sample mass,  $m_s$ .

**11.5.4** Load the cell in order to obtain a consistent loose pack throughout the cell with a level surface. To accomplish this, pour the weighed proppant sample into the test cell, constantly moving the source of the proppant stream so that the proppant surface in the test cell is level. Once the cell is loaded, care should be taken to avoid agitation (tapping, jarring, shaking), since variance in crush results have been largely associated with the method of loading the crush cell. If any of the sieved and weighed sample is spilled outside of the test cell, begin again at 11.5.2.

**11.5.5** Carefully insert the piston into the test cell containing the weighed sample of proppant, without applying any additional force.

**11.5.6** Holding the test cell, rotate the piston clockwise 180° a single time without applying additional pressure to insure a level surface in the proppant pack.

**11.5.7** Carefully lift the test cell and place it directly into the press, centring it under the ram. In order to maintain a loose-pack bulk density, do not shake or jar the cell, as this tends to settle the proppant pack and change the particle packing during the stress application.

**11.5.8** Crush stress-level guidelines are given in Table 5.

**Table 5 — Crush stress-level guidelines**

Proppant	Crush stress level MPa (psi)	
	Minimum	Maximum
Manmade proppants (fracturing)	34.5 (5 000)	103.4 (15 000)
Sand proppants (fracturing)	13.8 (2 000)	34.5 (5 000)
Sand proppants (gravel-pack)	13.8 (2 000)	13.8 (2 000)

Other stress levels may be used by specific agreement between user and supplier, to more clearly and specifically define proppant crush behaviour. Reporting of the data shall include proppant type, proppant size designation, crush stress level and percentage crushed.

At the date of publication of this part of ISO 13503, the selection of pressures is in the process of being revised to provide a stress at which a maximum percent of fines is generated (for example, 10 %). It is intended that this will be made a part of the proppant specifications document and be included in future revisions of this part of ISO 13503.

**11.5.9** Other stress levels may be used by specific agreement between user and supplier, to more clearly and specifically define proppant crush behaviour. Determine the force required on the cell to attain the prescribed stress using the following formula:

$$F_{tc} = \frac{\pi \times \sigma \times d_{cell}^2}{4} \quad (12)$$

where

$F_{tc}$  is the force required on the test cell, expressed in newtons (pounds-force);

$\sigma$  is the stress on the proppant sample, expressed in megapascals (pounds per square inch);

$d_{cell}$  is the test cell inside diameter, expressed in millimetres (inches).

**11.5.10** Apply the appropriate stress (see 11.5.8) to the test-cell piston at a constant rate of 13.8 MPa/min (2 000 psi/min) until the final pressure is reached. The time of arrival at the final stress should be within 5 % of the ramp time for that stress. If the predetermined stress is overshoot by more than  $\pm 2.5$  %, abort the test and start over again with a new sample. Automated load frames are highly recommended.

**11.5.11** Hold the stress level for 2 min.

**11.5.12** Release the stress and remove the test cell from the press.

**11.5.13** Carefully transfer the content of the cell into the same sieve stack used in 11.4.2. Scrape the bottom of the test cell to insure complete removal of sample.

**11.5.14** Place the sieve stack into the shaker and shake for 10 min.

**11.5.15** Carefully weigh the crushed material in the pan and record as  $m_{\text{pan}}$  to the nearest 0.1 g.

**11.5.16** Using Equation (13), calculate and report the amount of crushed material as a percentage,  $m'_{\text{pan}}$ , of the mass of proppant sample placed in the cell. Each proppant sample tested should be run in triplicate at the same stress and the results averaged.

$$m'_{\text{pan}} = \frac{m_{\text{pan}}}{m_s} \times 100 \quad (13)$$

where

$m_{\text{pan}}$  is the mass of fines generated in the test, expressed in grams;

$m_s$  is the mass of proppant used as the sample aliquot, expressed in grams.

## 12 Loss on ignition of resin-coated proppant

### 12.1 Objective

The loss-on-ignition (LOI) test is used for the determination of amount of ignitable material on coated proppant samples.

### 12.2 Apparatus and materials

The following equipment and materials are required for the loss-on-ignition test.

**12.2.1 Muffle furnace**, conventional or microwave, capable of at least 927 °C (1 700 °F).

**12.2.2 Ashing crucibles**, ceramic or quartz fibre, with lids.

**12.2.3 Crucible tongs**, approx. 305 mm (12 in) for handling the crucibles and lids.

**12.2.4 Gloves and face shield**, heavy, insulated.

**12.2.5 Desiccator**, with standard drying agent, anhydrous calcium sulfate or silica gel.

**12.2.6 Analytical balance**, 0.001 g accuracy.

**12.2.7 Sample splitter**.

### 12.3 Loss-on-ignition procedure for whole-grain proppant

**12.3.1** Pre-condition a series of crucibles with lids, in a preheated furnace at 927 °C (1 700 °F), for 15 min. Place the preconditioned crucibles with lids in a desiccator containing standard desiccants and allow to cool to room temperature. Preheating of the furnace to a minimum of 927 °C (1 700 °F) is an absolute necessity.

**12.3.2** Weigh on an analytical balance, a conditioned crucible with lid, to four decimal places. Record this tare mass as  $m_{c+l}$ , expressed in grams.

**12.3.3** Place approximately 6 g to 8 g of resin-coated proppant in the crucible. Use the sample splitter to obtain a representative 6 g to 10 g sample.

**12.3.4** Weigh the sample plus crucible and lid on the analytical balance to four decimal places. Record the mass as  $m_{c+s}$ .

**12.3.5** Place the covered crucible and sample in the muffle furnace at 927 °C (1 700 °F) using the spatula or long crucible tongs.

**12.3.6** Allow the furnace to heat back up to 927 °C (1 700 °F). This can take some time depending on the condition of the furnace.

**12.3.7** Keep the samples in the furnace for 2 h (15 min when using a microwave furnace) after the furnace temperature has returned to 927 °C (1 700 °F).

**12.3.8** Transfer the crucible with lid and sample to the desiccator and allow cooling to room temperature. Inspect the content of the fired crucible. If any black or dark-coloured residue remains in the crucible, firing might not be complete. Put the crucible and lid with sample back in the furnace for at least 30 min or until the black residues have been burned to off-white or gray ash.

**12.3.9** Re-weigh the crucible with lid containing the sample of proppant, using the analytical balance, to four decimal places. Record the mass, expressed in grams, as  $m_{c+l+s(ht)}$ .

**12.3.10** Calculate the mass loss,  $\Delta m_{LOI}$ , on ignition, expressed as a percent, for each sample as given in Equation (14):

$$\Delta m_{LOI} = \Delta m_s \times 100 / m_s \quad (14)$$

where

$\Delta m_s$  is the mass loss, equal to  $m_{c+l+s} - m_{c+l+s(ht)}$ , expressed in grams;

$m_s$  is the original sample mass, equal to  $m_{c+l+s} - m_{c+l}$ , expressed in grams.

EXAMPLE Calculation of the LOI:

8.824 2 g	original mass, $m_{c+l+s}$ , of the sample plus the crucible and lid
<u>-0.803 9 g</u>	<u>– (minus) tare, <math>m_{c+l}</math></u>
8.020 3 g	sample mass, $m_s$
8.824 2 g	original mass of the sample plus the crucible and lid, $m_{c+l+s}$
<u>-8.574 2 g</u>	<u>– (minus) mass of the heat-treated sample plus crucible, <math>m_{c+l+s(ht)}</math></u>
0.250 0 g	mass loss, $\Delta m_s$

$$\Delta m_{LOI} = \frac{\Delta m_s \times 100 \%}{m_s} = \frac{0,250\ 0 \times 100 \%}{8,020\ 3} = 3,12 \%$$

**12.3.11** Run triplicate samples of each resin-coated proppant. If the values for replicates differ by more than 0.2 %, repeat the analysis. Average the results and report as  $\Delta m_{LOI}$ , mass loss on ignition.

The ceramic crucibles, after the proppant is carefully removed, are stored in desiccators. They can be reused many times.

## **Annex A**

(informative)

### **Formazin solution preparation**

#### **A.1 Preparation of a formazin polymer solution for calibration**

Prepare a white suspension of formazin polymer for calibration by using the following procedure. A stock formazin solution should be prepared that can be diluted to provide a series of standards over a large turbidity range. Standards can also be purchased from equipment manufacturers.

- a) Dissolve 1.0 g of hydrazine sulfate in distilled water and dilute to the mark in 100 ml volumetric flask.
- b) Dissolve 10.0 g of hexamethylenetetramine in distilled water and dilute to the mark in a 100 ml volumetric flask.
- c) Transfer 5.0 ml of each of the above solutions to a 100 ml volumetric flask. Mix the solution and allow to stand for 24 h at 25 °C (77 °F).
- d) Use distilled water to dilute the mixture to 100 ml and mix. The turbidity of this standard stock solution is 400 FTU. The turbidity of a standard solution prepared by dilution of the stock solution is proportional to the formazin concentration. For example, the turbidity of a standard solution prepared by diluting 50 ml of the 400 FTU solution to 100 ml is 200 FTU.
- e) A standard stock solution shall be prepared monthly.

#### **A.2 Equipment calibration**

This procedure is general in nature and describes a typical calibration procedure using the above solution. Check equipment manuals for specific and appropriate calibration procedure details.

- a) Adjust the wave length of the machine to 450 nm.
- b) Place the opaque rod in the sample compartment and check the zero adjustment.
- c) Place a vial containing clear, colourless water in the sample compartment and adjust the full scale control to give a reading of 100 % transmittance.
- d) Prepare a chart to convert transmittance to NTU.
- e) Dilute the formazin solution to make several standard solutions of known turbidity.
- f) For each solution, place a test vial containing the standard solution in the sample compartment and read the percent transmittance.
- g) Plot the turbidity (NTU) vs. transmittance.

## Bibliography

- [1] API RP 56:1995, *Recommended Practices for Testing Sand Used in Hydraulic Fracturing Operations*<sup>8)</sup>
- [2] API RP 58:1995, *Recommended Practices for Testing Sand Used in Gravel-packing Operations*
- [3] API RP 60:1995, *Recommended Practices for Testing High Strength Proppants Used in Hydraulic Fracturing Operations*
- [4] ANSI B74.4, *Bulk Density of Abrasive Particles*<sup>9)</sup>

---

8) American Petroleum Institute, 1220 L Street, Northwest, Washington, D.C. 20005-4070.

9) American National Standards Institute, 11 West 42<sup>nd</sup> Street, 13<sup>th</sup> Floor, New York, New York 10036.





# 2008

## Publications

### Order Form

**Effective January 1, 2008.**

**API Members receive a 30% discount where applicable.**

The member discount does not apply to purchases made for the purpose of resale or for incorporation into commercial products, training courses, workshops, or other commercial enterprises.

**Available through IHS:**

Phone Orders: **1-800-854-7179** (Toll-free in the U.S. and Canada)  
**303-397-7956** (Local and International)

Fax Orders: **303-397-2740**

Online Orders: **global.ihs.com**

**Date:** \_\_\_\_\_

☐ **API Member** (Check if Yes)

**Invoice To** (☐ Check here if same as "Ship To")

Name: \_\_\_\_\_

Title: \_\_\_\_\_

Company: \_\_\_\_\_

Department: \_\_\_\_\_

Address: \_\_\_\_\_

City: \_\_\_\_\_ State/Province: \_\_\_\_\_

Zip/Postal Code: \_\_\_\_\_ Country: \_\_\_\_\_

Telephone: \_\_\_\_\_

Fax: \_\_\_\_\_

Email: \_\_\_\_\_

**Ship To** (UPS will not deliver to a P.O. Box)

Name: \_\_\_\_\_

Title: \_\_\_\_\_

Company: \_\_\_\_\_

Department: \_\_\_\_\_

Address: \_\_\_\_\_

City: \_\_\_\_\_ State/Province: \_\_\_\_\_

Zip/Postal Code: \_\_\_\_\_ Country: \_\_\_\_\_

Telephone: \_\_\_\_\_

Fax: \_\_\_\_\_

Email: \_\_\_\_\_

Quantity	Title	SO★	Unit Price	Total

☐ Payment Enclosed      ☐ P.O. No. (Enclose Copy) \_\_\_\_\_

☐ Charge My IHS Account No. \_\_\_\_\_

☐ VISA      ☐ MasterCard      ☐ American Express

☐ Diners Club      ☐ Discover

Credit Card No.: \_\_\_\_\_

Print Name (As It Appears on Card): \_\_\_\_\_

Expiration Date: \_\_\_\_\_

Signature: \_\_\_\_\_

**Subtotal**

**Applicable Sales Tax** (see below)

**Rush Shipping Fee** (see below)

**Shipping and Handling** (see below)

**Total** (in U.S. Dollars)

★ To be placed on Standing Order for future editions of this publication, place a check mark in the SO column and sign here:

Pricing and availability subject to change without notice.

**Mail Orders** - Payment by check or money order in U.S. dollars is required except for established accounts. State and local taxes, \$10 processing fee, and 5% shipping must be added. Send mail orders to: **API Publications, IHS, 15 Inverness Way East, c/o Retail Sales, Englewood, CO 80112-5776, USA.**

**Purchase Orders** - Purchase orders are accepted from established accounts. Invoice will include actual freight cost, a \$10 processing fee, plus state and local taxes.

**Telephone Orders** - If ordering by telephone, a \$10 processing fee and actual freight costs will be added to the order.

**Sales Tax** - All U.S. purchases must include applicable state and local sales tax. Customers claiming tax-exempt status must provide IHS with a copy of their exemption certificate.

**Shipping (U.S. Orders)** - Orders shipped within the U.S. are sent via traceable means. Most orders are shipped the same day. Subscription updates are sent by First-Class Mail. Other options, including next-day service, air service, and fax transmission are available at additional cost. Call 1-800-854-7179 for more information.

**Shipping (International Orders)** - Standard international shipping is by air express courier service. Subscription updates are sent by World Mail. Normal delivery is 3-4 days from shipping date.

**Rush Shipping Fee** - Next Day Delivery orders charge is \$20 in addition to the carrier charges. Next Day Delivery orders must be placed by 2:00 p.m. MST to ensure overnight delivery.

**Returns** - All returns must be pre-approved by calling the IHS Customer Service Department at 1-800-624-3974 for information and assistance. There may be a 15% restocking fee. Special order items, electronic documents, and age-dated materials are non-returnable.



# THERE'S MORE WHERE THIS CAME FROM.

API provides additional resources and programs to the oil and natural gas industry which are based on API Standards. For more information, contact:

## **API MONOGRAM® LICENSING PROGRAM**

Phone: 202-962-4791  
Fax: 202-682-8070  
Email: [certification@api.org](mailto:certification@api.org)

## **API QUALITY REGISTRAR (APIQR®)**

- > ISO 9001 Registration
- > ISO/TS 29001 Registration
- > ISO 14001 Registration
- > API Spec Q1® Registration

Phone: 202-962-4791  
Fax: 202-682-8070  
Email: [certification@api.org](mailto:certification@api.org)

## **API PERFORATOR DESIGN REGISTRATION PROGRAM**

Phone: 202-682-8490  
Fax: 202-682-8070  
Email: [perfdesign@api.org](mailto:perfdesign@api.org)

## **API TRAINING PROVIDER CERTIFICATION PROGRAM (API TPCP™)**

Phone: 202-682-8490  
Fax: 202-682-8070  
Email: [tpcp@api.org](mailto:tpcp@api.org)

## **API INDIVIDUAL CERTIFICATION PROGRAMS (ICP®)**

Phone: 202-682-8064  
Fax: 202-682-8348  
Email: [icp@api.org](mailto:icp@api.org)

## **API ENGINE OIL LICENSING AND CERTIFICATION SYSTEM (EOLCS)**

Phone: 202-682-8516  
Fax: 202-962-4739  
Email: [eolcs@api.org](mailto:eolcs@api.org)

## **API PETROTEAM (TRAINING, EDUCATION AND MEETINGS)**

Phone: 202-682-8195  
Fax: 202-682-8222  
Email: [petroteam@api.org](mailto:petroteam@api.org)

## **API UNIVERSITY™**

Phone: 202-682-8195  
Fax: 202-682-8222  
Email: [training@api.org](mailto:training@api.org)

Check out the API Publications, Programs, and Services Catalog online at [www.api.org](http://www.api.org).



Copyright 2008 – API, all rights reserved. API, API monogram, APIQR, API Spec Q1, API TPCP, ICP, API University and the API logo are either trademarks or registered trademarks of API in the United States and/or other countries.



1220 L Street, NW  
Washington, DC 20005-4070  
USA

202.682.8000

**Additional copies are available through IHS**

Phone Orders: 1-800-854-7179 (Toll-free in the U.S. and Canada)  
303-397-7956 (Local and International)

Fax Orders: 303-397-2740

Online Orders: [global.ihs.com](http://global.ihs.com)

Information about API Publications, Programs and Services  
is available on the web at [www.api.org](http://www.api.org)

Product No: GX19C01