



2005 Survey on Petroleum Industry Occupational Injuries, Illnesses, and Fatalities Summary Report: Aggregate Data Only

As Reported to the
American Petroleum Institute

Covering Petroleum Operations of Reporting Companies

API Publication 2384
June 2006

.....



2005 Survey on Petroleum Industry Occupational Injuries, Illnesses, and Fatalities Summary Report: Aggregate Data Only

As Reported to the
American Petroleum Institute

Covering Petroleum Operations of Reporting Companies

API Publication 2384
June 2006

COPYRIGHT NOTICE

All information offered in this report is the sole and exclusive property of the American Petroleum Institute.

You may not reproduce, upload, post, transmit, download, or distribute, resell or otherwise transfer outside of your company without express consent of the American Petroleum Institute.

Copyright©2006 The American Petroleum Institute

SPECIAL NOTES

API publications necessarily address problems of a general nature. With respect to particular circumstances, local, state, and federal laws and regulations should be reviewed.

API is not undertaking to meet the duties of employers, manufacturers, or suppliers to warn and properly train and equip their employees, and others exposed, concerning health and safety risks and precautions, nor undertaking their obligations under local, state, or federal laws.

Information concerning safety and health risks and proper precautions with respect to particular materials and conditions should be obtained from the employer, the manufacturer or supplier of that material, or the material safety data sheet.

Nothing contained in any API publication is to be construed as granting any right, by implication or otherwise, for the manufacture, sale, or use of any method, apparatus, or product covered by letters patent. Neither should anything contained in the publication be construed as insuring anyone against liability for infringement of letters patent.

Generally, API standards are reviewed and revised, reaffirmed, or withdrawn at least every five years. Sometimes a one-time extension of up to two years will be added to this review cycle. This publication will no longer be in effect five years after its publication date as an operative API standard or, where an extension has been granted, upon republication. Status of the publication can be ascertained from the API Authoring Department, telephone (202) 682-8000. A catalog of API publications and materials is published annually and updated quarterly by API, 1220 L Street, NW, Washington, D.C. 20005.

This document was produced under API standardization procedures that ensure appropriate notification and participation in the developmental process and is designed as an API standard. Questions concerning the interpretation of the content of this standard or comments and questions concerning the procedures under which this standard was developed should be directed in writing to the director of the Regulatory and Scientific Affairs Department (shown on the title page of this document), American Petroleum Institute, 1220 L Street, NW, Washington, D.C. 20005. Requests for permission to reproduce or translate all or any part of the material published herein should also be addressed to the director.

Every effort has been made by the Institute to assure the accuracy and reliability of the data contained in this document; however, the Institute makes no representation, warranty or guarantee in connection with this publication and hereby expressly disclaims any liability or responsibility for loss or damage resulting from its use or for the violation of any federal, state, or municipal regulation with which this publication may conflict.

API standards are published to facilitate the broad availability of proven, sound engineering and operating practices. These standards are not intended to obviate the need for applying sound engineering judgment regarding when and where these standards should be utilized. The formulation and publication of API standards is not intended in any way to inhibit anyone from using any other practices.

Any manufacturer marking equipment or materials in conformance with the marking requirements of an API standard is solely responsible for complying with all the applicable requirements of that standard. API does not represent, warrant, or guarantee that such products do in fact conform to the applicable API standard.

TABLE OF CONTENTS

	Page
Introduction	1
Background.....	1
Summary	2
Tables	
UNITED STATES OPERATIONS	
Company Employees	6
Contract Workers	6
NON-U.S. OPERATIONS	
Company Employees	7
Contract Workers	7
Fatalities	
Summary	9
Narrative of Fatalities	10
Appendices	
Appendix A: List of Participants	
Appendix B: Data Collection Forms	

INTRODUCTION

The Survey on Petroleum Industry Occupational Injuries, Illnesses and Fatalities (OII) is conducted annually. Participation is voluntary and the number of participating companies varies from year to year. Therefore, exercise caution when using this data to characterize the performance of the industry as a whole.

The Survey's results are documented in the *2005 Benchmarking Survey of Occupational Injuries, Illnesses, and Fatalities in Petroleum Industry: Report to Participants*. This Report is only available on *The Occupational Injuries, Illnesses and Fatalities Reporting System website* (<http://oii.api.org>). Access to this report is limited to companies that gave API permission to share their 2005 data.

Participants are asked to submit data according to the Bureau of Labor Statistics (BLS) guidelines. Therefore, this report provides incidence rates per 200,000 hours worked on the same basis as those reported by BLS.

BACKGROUND

API has been collecting data regarding workplace injuries, illnesses and fatalities in *The Survey on Occupational Injuries, Illnesses and Fatalities (OII)* since 1931. Prior to the 1999 survey, companies submitted employee data for their U.S. operations only. In 2000, API expanded the scope of the *OII* and began collecting employee and contract worker data for operations both inside and outside of the U.S.

A second change introduced in 2000 gave participants the ability to submit their data electronically over the Internet using *The Occupational Injuries, Illnesses and Fatalities Reporting System* at <http://oii.api.org/>. Features of this online database include automatic data checks, online instructions, and reports. In addition, for companies willing to share their data have the ability to produce customized benchmarking reports.

While conducting the 2001 survey, API learned that a number of companies no longer track certain data. Consequently, it was decided to make those data fields optional in the 2002 survey. These optional data fields are “The Average Number of Employees”, “Job Transfer or Restriction”, “All Injury Cases” and “All Illness Cases”.

The Occupational Injuries, Illnesses, and Fatalities Reporting System generates two broad categories of online reports for each type of worker—Full Benchmarking and Limited Benchmarking. Companies submitting data for both required and optional fields as well as giving API permission to share their data with other participants have access to Full Benchmark reports. Companies that only submit data for required fields only have access to Limited Benchmarking reports.

SUMMARY

U.S. Operations: Company Employees

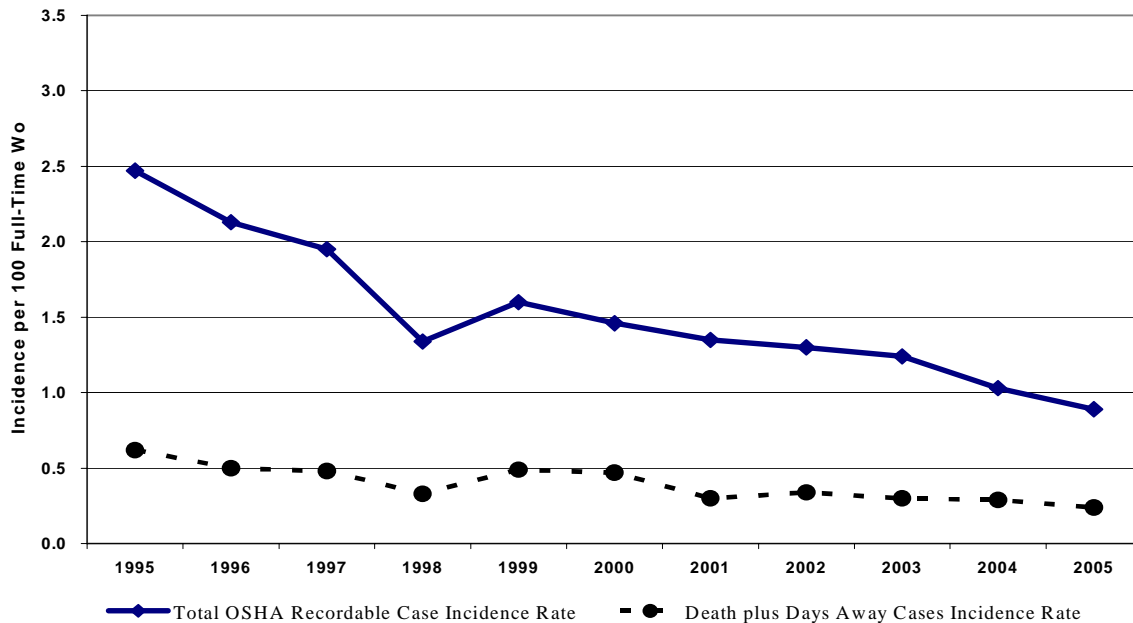
2005 data pertaining to U.S. occupational injuries, illnesses and fatalities for an employer's own employees were submitted to the American Petroleum Institute (API) by sixty-five oil and gas companies, employing persons with a total work experience of 356 million hours. In 2004, fifty-nine companies reported 285 million hours.

In 2005, the *Total OSHA Recordable Case Incidence Rate* reported was .89, compared to 1.03 for 2004. This rate is the number of total recordable cases per 200,000 hours worked, or approximately the number of cases per 100 full-time workers per year.

The *Death Plus Days Away Incidence Rate* reported for 2005 was 0.24 per 200,000 hours worked—or one case for every 417 employees, compared to 0.29 in 2004—or one case for every 345 employees.

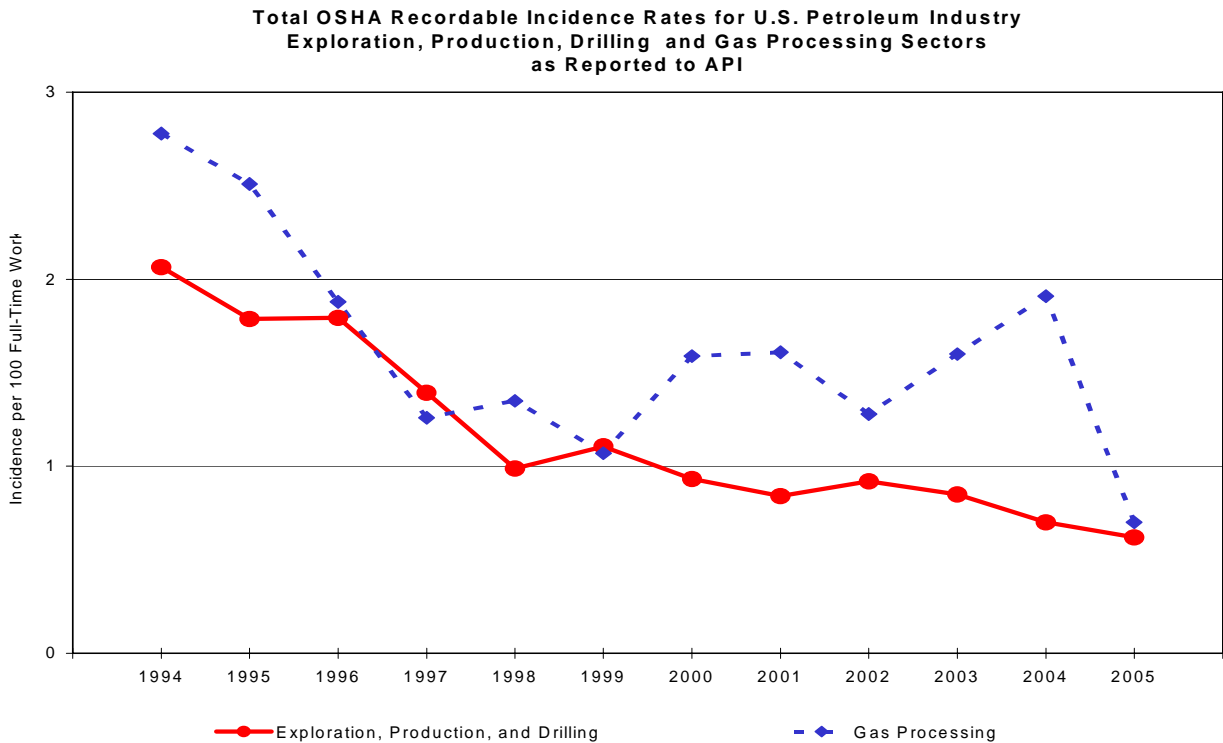
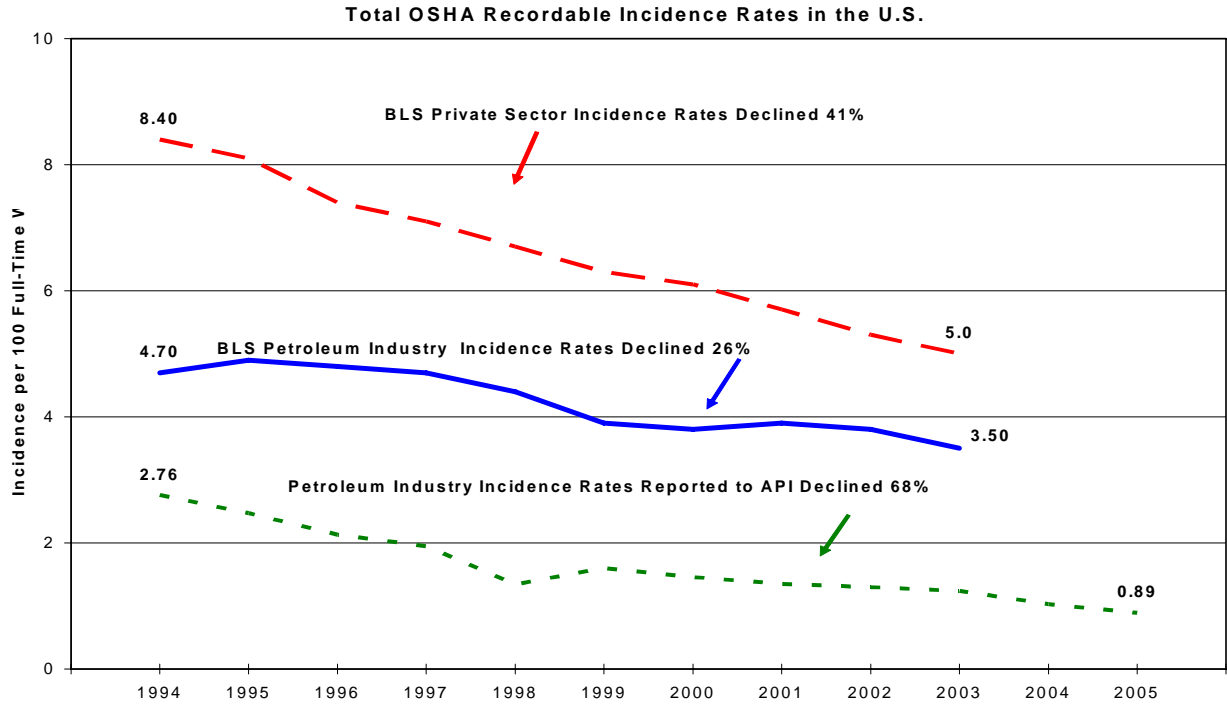
Since 1995, the reported *Total OSHA Recordable Case Incidence Rate* and *Death plus Days Away Incidence Rate* have improved an average of 8.9 and 6.5 percent per year, respectively (see the figure below).

Reported U.S. Occupational Injuries, Illnesses, and Fatalities in the Petroleum Industry Company Employees

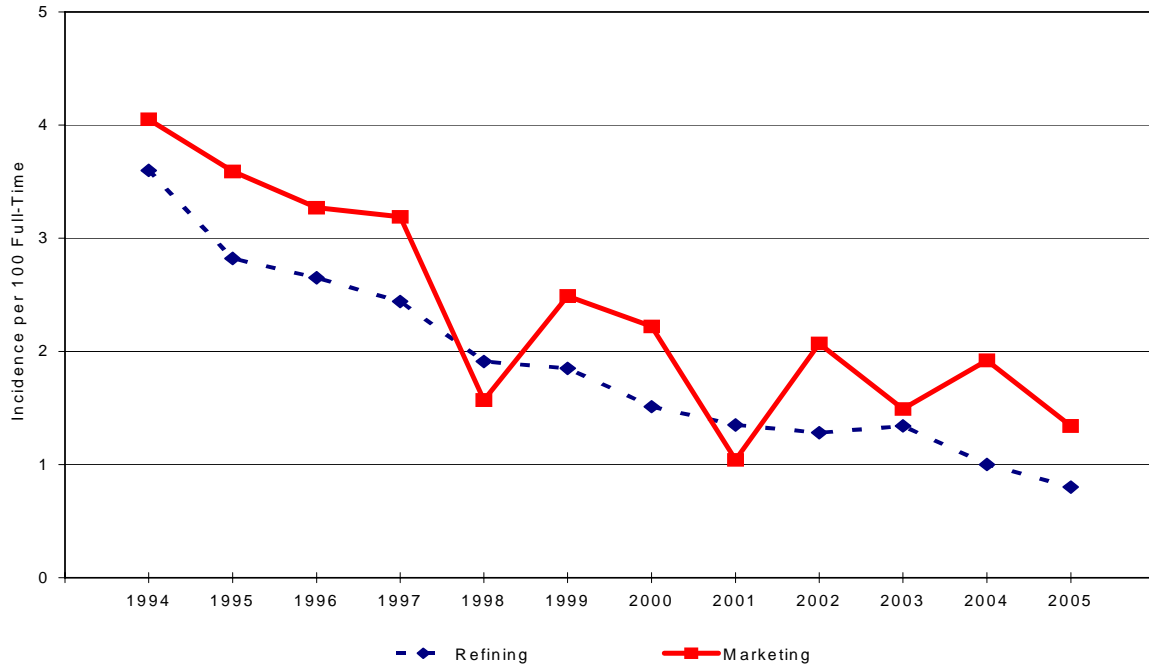


Significant differences exist among companies regarding return-to-work policies and practices. Therefore, use of the *Death plus Days Away Incidence Rates* alone to judge and compare company safety performance is not recommended.

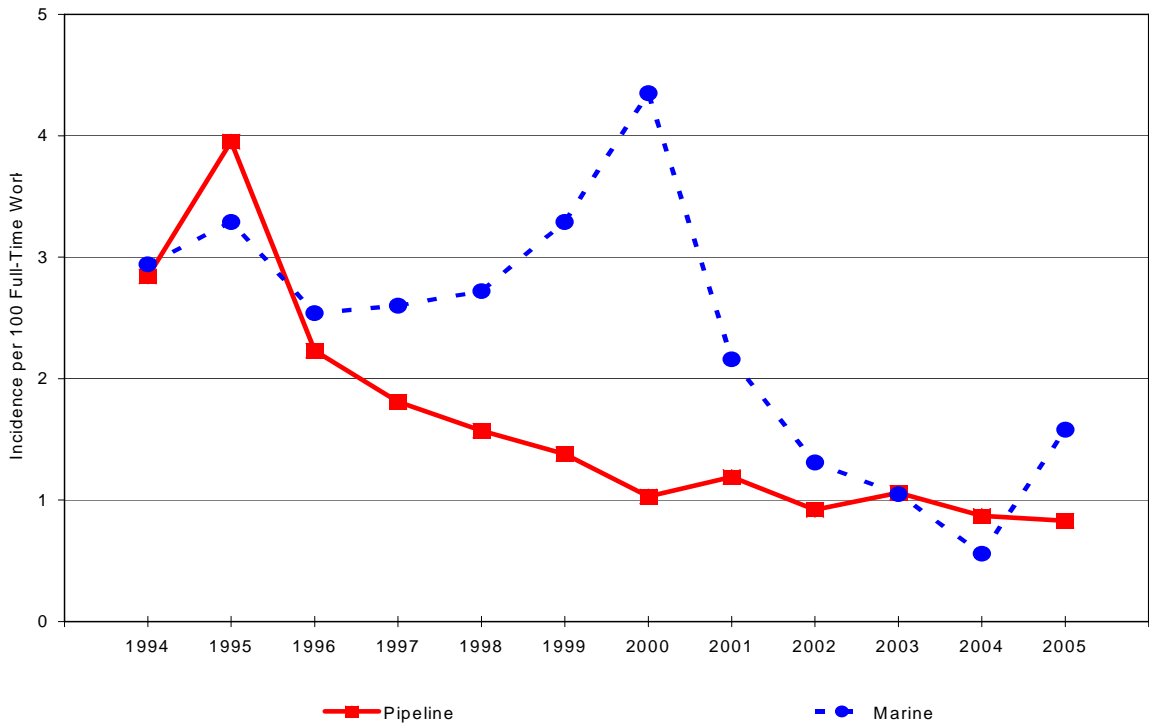
The total OSHA recordable incidence rate as reported to API has declined by more than half over the past twelve years. The following graphs show the ten-year trend for selected U.S. petroleum industry sectors.



**Total OSHA Recordable Incidence Rates for U.S. Petroleum Industry
Marketing and Refining Sectors as Reported to API**



**Total OSHA Recordable Incidence Rates for U.S. Petroleum Industry
Pipeline and Marine Sectors as Reported to API**



U.S. Operations: Contract Workers

In 2005, thirty-two oil and gas companies submitted contract worker data for their U.S. operations. These workers provided 275 million hours of service to these companies. The *Total OSHA Recordable Case Incidence Rate* reported for these contract workers was 1.20. The *Death plus Days Away Incidence Rate* reported for this group of workers was 0.31 per 200,000 hours worked—or one case for every 323 workers.

Non-U.S. Operations: Company Employees

Fifteen companies (including one subsidiary) reported non-U.S. employee data. During 2005, these employees had a total work experience of 345 million hours. For this group, the reported *Total OSHA Recordable Case Incidence Rate* was 0.32.

Their *Death plus Days Away Incidence Rate* was 0.07 per 200,000 hours worked—or one case for every 1,429 employees.

Non-U.S. Operations: Contract Workers

Twelve companies reported data for non-U.S. contract workers. In 2005, this category of worker performed a total of 751 million hours in their non-U.S. operations. The *Total OSHA Recordable Case Incidence Rate* reported for these contract workers was 0.48. The *Death plus Days Away Incidence Rate* reported for this group of workers was 0.10 per 200,000 hours worked—or one case for every 1,000 workers.

Survey on Petroleum Industry Occupational Injuries, Illnesses and Fatalities
Limited Benchmarking: All Sharing Companies
U.S. Operations: Company Employees for 2005

Totals by Function

Function	Total Hours Worked (Thousands)	OSHA Recordable Cases Classified by Severity		Total OSHA Recordable Cases	Incidence Rates*		
		Cases of Death	Cases of Days Away From Work		Incidence Rate Total OSHA Recordable Cases	Death plus Days Away From Work Cases	Days Away From Work Cases
Total U.S. Operations: Company Employees 2005	355,717	3	415	1,585	.89	.24	.23
A . UPSTREAM							
Offshore Expl & Prodn & Drilling ¹	9,346	0	7	25	.53	.15	.15
Onshore Expl & Prodn & Drilling ¹	43,706	0	32	140	.64	.15	.15
Expl & Prodn & Drilling Subtotal	53,052	0	39	165	.62	.15	.15
Gas Processing	1,726	0	2	6	.70	.23	.23
Upstream Support Services	15,861	0	7	24	.30	.09	.09
Upstream Subtotal	70,639	0	48	195	.55	.14	.14
B . DOWNSTREAM							
Marketing-Wholesale	11,036	0	18	50	.91	.33	.33
Marketing-Retail	39,872	1	157	352	1.77	.79	.79
Marketing-Not separated ²	43,491	1	14	232	1.07	.07	.06
Marketing Subtotal	94,399	2	189	634	1.34	.40	.40
Refining ¹	86,474	0	91	348	.80	.21	.21
Lubricants/Specialties	22,549	0	27	168	1.49	.24	.24
Downstream Support Services	12,247	0	3	9	.15	.05	.05
Downstream Subtotal	215,669	2	310	1,159	1.07	.29	.29
C . PIPELINE							
Pipeline-Liquid	13,976	1	27	84	1.20	.40	.39
Pipeline-Gas	470	0	0	3	1.28	0.00	0.00
Pipeline-Not separated ⁴	16,468	0	6	41	.50	.07	.07
Pipeline Subtotal	30,914	1	33	128	.83	.22	.21
MARINE	3,548	0	6	28	1.58	.34	.34
RESEARCH & DEV	7,625	0	3	10	.26	.08	.08
SUPPORT SERVICES	27,322	0	15	65	.48	.11	.11

- 1 Include Power Generation personnel that support this function.
2 Marketing data unable to be separated into Wholesale or Retail functions.
3 Subsidiary data is not included in this table.
4 Pipeline data unable to be separated into Liquid or Gas functions.
5 Not covered under Operating Segments.

*API calculated fields: Total OSHA Recordable Case Incidence Rate = Total OSHA Recordable Cases multiplied by 200 divided by the hours worked (in thousands)
Death plus Days Away From Work Cases Incidence Rate = Death plus Days Away From Work Cases multiplied by 200 divided by the hours worked (in thousands)
Days Away From Work Cases Incidence Rate = Days Away From Work Cases multiplied by 200 divided by the hours worked (in thousands)

Survey on Petroleum Industry Occupational Injuries, Illnesses and Fatalities
Limited Benchmarking: All Sharing Companies
U.S. Operations: Contract Workers for 2005

Totals by Function

Function	Total Hours Worked (Thousands)	OSHA Recordable Cases Classified by Severity		Total OSHA Recordable Cases	Incidence Rates*		
		Cases of Death	Cases of Days Away From Work		Incidence Rate Total OSHA Recordable Cases	Death plus Days Away From Work Cases	Days Away From Work Cases
Total U.S. Operations: Contract Workers 2005	274,691	21	409	1,652	1.20	.31	.30
A . UPSTREAM							
Offshore Expl & Prodn & Drilling ¹	42,389	1	14	129	.61	.07	.07
Onshore Expl & Prodn & Drilling ¹	73,313	2	162	793	2.16	.45	.44
Expl & Prodn & Drilling Subtotal	115,702	3	176	922	1.59	.31	.30
Gas Processing	2,445	0	1	17	1.39	.08	.08
Upstream Support Services	5,218	0	3	5	.19	.11	.11
Upstream Subtotal	123,365	3	180	944	1.53	.30	.29
B . DOWNSTREAM							
Marketing-Wholesale	3,910	0	5	20	1.02	.26	.26
Marketing-Retail	6,743	0	7	10	.30	.21	.21
Marketing-Not separated ²	4,469	1	5	21	.94	.27	.22
Marketing Subtotal	15,122	1	17	51	.67	.24	.22
Refining ¹	100,957	17	181	496	.98	.39	.36
Lubricants/Specialties	3,872	0	3	13	.67	.15	.15
Downstream Support Services	2,988	0	1	9	.60	.07	.07
Downstream Subtotal	122,939	18	202	569	.93	.36	.33
C . PIPELINE							
Pipeline-Liquid	7,031	0	6	32	.91	.17	.17
Pipeline-Gas	21	0	0	0	0.00	0.00	0.00
Pipeline-Not separated ⁴	9,236	0	7	54	1.17	.15	.15
Pipeline Subtotal	16,288	0	13	86	1.06	.16	.16
MARINE	1,276	0	1	3	.47	.16	.16
RESEARCH & DEV	595	0	1	1	.34	.34	.34
SUPPORT SERVICES	10,228	0	12	49	.96	.23	.23

- 1 Include Power Generation personnel that support this function.
2 Marketing data unable to be separated into Wholesale or Retail functions.
3 Subsidiary data is not included in this table.
4 Pipeline data unable to be separated into Liquid or Gas functions.
5 Not covered under Operating Segments.

*API calculated fields: Total OSHA Recordable Case Incidence Rate = Total OSHA Recordable Cases multiplied by 200 divided by the hours worked (in thousands)
Death plus Days Away From Work Cases Incidence Rate = Death plus Days Away From Work Cases multiplied by 200 divided by the hours worked (in thousands)
Days Away From Work Cases Incidence Rate = Days Away From Work Cases multiplied by 200 divided by the hours worked (in thousands)

Survey on Petroleum Industry Occupational Injuries, Illnesses and Fatalities
Limited Benchmarking: All Sharing Companies
Non-U.S. Operations: Company Employees for 2005

Totals by Function

Function	Total Hours Worked (Thousands)	OSHA Recordable Cases Classified by Severity		Total OSHA Recordable Cases	Incidence Rates*		
		Cases of Death	Cases of Days Away From Work		Incidence Rate Total OSHA Recordable Cases	Death plus Days Away From Work Cases	Days Away From Work Cases
Total Non-U.S. Operations: Company Employees 2005	345,165	3	122	545	.32	.07	.07
A . UPSTREAM							
Offshore Expl & Prodn & Drilling ¹	43,918	1	23	59	.27	.11	.10
Onshore Expl & Prodn & Drilling ¹	75,310	0	31	101	.27	.08	.08
Expl & Prodn & Drilling Subtotal	119,228	1	54	160	.27	.09	.09
Gas Processing	912	0	0	1	.22	0.00	0.00
Upstream Support Services	8,445	0	0	4	.09	0.00	0.00
Upstream Subtotal	128,585	1	54	165	.26	.09	.08
B . DOWNSTREAM							
Marketing-Wholesale	13,552	0	6	19	.28	.09	.09
Marketing-Retail	0	0	0	0	0.00	0.00	0.00
Marketing-Not separated ²	114,676	1	33	249	.43	.06	.06
Marketing Subtotal	128,228	1	39	268	.42	.06	.06
Refining ¹	31,899	1	9	39	.24	.06	.06
Lubricants/Specialties	31,723	0	12	36	.23	.08	.08
Downstream Support Services	203	0	0	0	0.00	0.00	0.00
Downstream Subtotal	192,053	2	60	343	.36	.06	.06
C . PIPELINE							
Pipeline-Liquid	21	0	0	0	0.00	0.00	0.00
Pipeline-Gas	0	0	0	0	0.00	0.00	0.00
Pipeline-Not separated ⁴	0	0	0	0	0.00	0.00	0.00
Pipeline Subtotal	21	0	0	0	0.00	0.00	0.00
MARINE	14,312	0	3	22	.31	.04	.04
RESEARCH & DEV	242	0	0	0	0.00	0.00	0.00
SUPPORT SERVICES	9,952	0	5	15	.30	.10	.10

- 1 Include Power Generation personnel that support this function.
2 Marketing data unable to be separated into Wholesale or Retail functions.
3 Subsidiary data is not included in this table.
4 Pipeline data unable to be separated into Liquid or Gas functions.
5 Not covered under Operating Segments.

*API calculated fields: Total OSHA Recordable Case Incidence Rate = Total OSHA Recordable Cases multiplied by 200 divided by the hours worked (in thousands)
Death plus Days Away From Work Cases Incidence Rate = Death plus Days Away From Work Cases multiplied by 200 divided by the hours worked (in thousands)
Days Away From Work Cases Incidence Rate = Days Away From Work Cases multiplied by 200 divided by the hours worked (in thousands)

Survey on Petroleum Industry Occupational Injuries, Illnesses and Fatalities
Limited Benchmarking: All Sharing Companies
Non-U.S. Operations: Contract Workers for 2005

Totals by Function

Function	Total Hours Worked (Thousands)	OSHA Recordable Cases Classified by Severity		Total OSHA Recordable Cases	Incidence Rates*		
		Cases of Death	Cases of Days Away From Work		Incidence Rate Total OSHA Recordable Cases	Death plus Days Away From Work Cases	Days Away From Work Cases
Total Non-U.S. Operations: Contract Workers 2005	750,500	14	364	1,787	.48	.10	.10
A . UPSTREAM							
Offshore Expl & Prodn & Drilling ¹	198,528	2	102	571	.58	.10	.10
Onshore Expl & Prodn & Drilling ¹	344,167	3	128	799	.46	.08	.07
Expl & Prodn & Drilling Subtotal	542,695	5	230	1,370	.50	.09	.08
Gas Processing	1,614	0	2	7	.87	.25	.25
Upstream Support Services	10,925	0	5	30	.55	.09	.09
Upstream Subtotal	555,234	5	237	1,407	.51	.09	.09
B . DOWNSTREAM							
Marketing-Wholesale	22,349	2	24	36	.32	.23	.21
Marketing-Retail	0	0	0	0	0.00	0.00	0.00
Marketing-Not separated ²	81,442	4	47	126	.31	.13	.12
Marketing Subtotal	103,791	6	71	162	.31	.15	.14
Refining ¹	44,974	0	24	133	.59	.11	.11
Lubricants/Specialties	20,660	3	7	34	.33	.10	.07
Downstream Support Services	54	0	0	0	0.00	0.00	0.00
Downstream Subtotal	169,479	9	102	329	.39	.13	.12
C . PIPELINE							
Pipeline-Liquid	4	0	0	0	0.00	0.00	0.00
Pipeline-Gas	0	0	0	0	0.00	0.00	0.00
Pipeline-Not separated ⁴	0	0	0	0	0.00	0.00	0.00
Pipeline Subtotal	4	0	0	0	0.00	0.00	0.00
MARINE	11,425	0	13	30	.53	.23	.23
RESEARCH & DEV	53	0	0	0	0.00	0.00	0.00
SUPPORT SERVICES	14,305	0	12	21	.29	.17	.17

- 1 Include Power Generation personnel that support this function.
2 Marketing data unable to be separated into Wholesale or Retail functions.
3 Subsidiary data is not included in this table.
4 Pipeline data unable to be separated into Liquid or Gas functions.
5 Not covered under Operating Segments.

*API calculated fields: Total OSHA Recordable Case Incidence Rate = Total OSHA Recordable Cases multiplied by 200 divided by the hours worked (in thousands)
Death plus Days Away From Work Cases Incidence Rate = Death plus Days Away From Work Cases multiplied by 200 divided by the hours worked (in thousands)
Days Away From Work Cases Incidence Rate = Days Away From Work Cases multiplied by 200 divided by the hours worked (in thousands)

Page Intentionally Blank

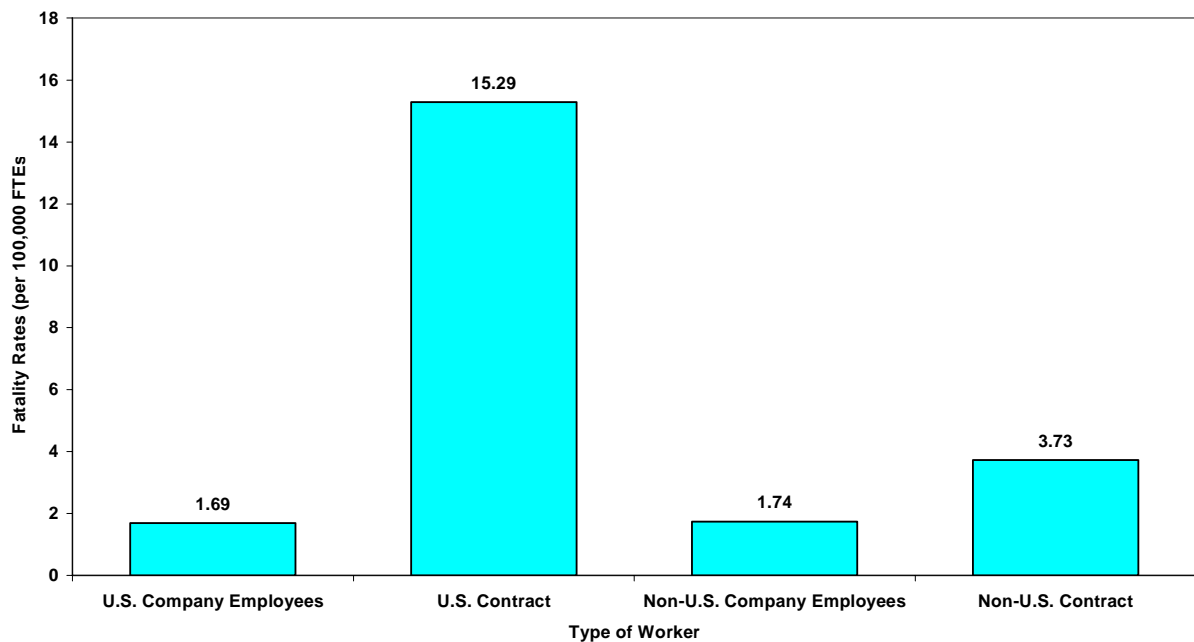
2005 Summary of Fatal Injuries in the Petroleum Industry As Reported to the American Petroleum Institute

In 2005, participants reported twenty-four fatal accidents for their U.S. operations. Three fatalities occurred among company employees and twenty-one among contract workers. For company employees, this is equivalent to one fatality per 119 million hours worked or 1.69 fatalities per 100,000 workers. Comparatively, for contract workers it is the equivalent of one fatality per 13 million hours worked or 15.29 fatalities per 100,000 contract workers.

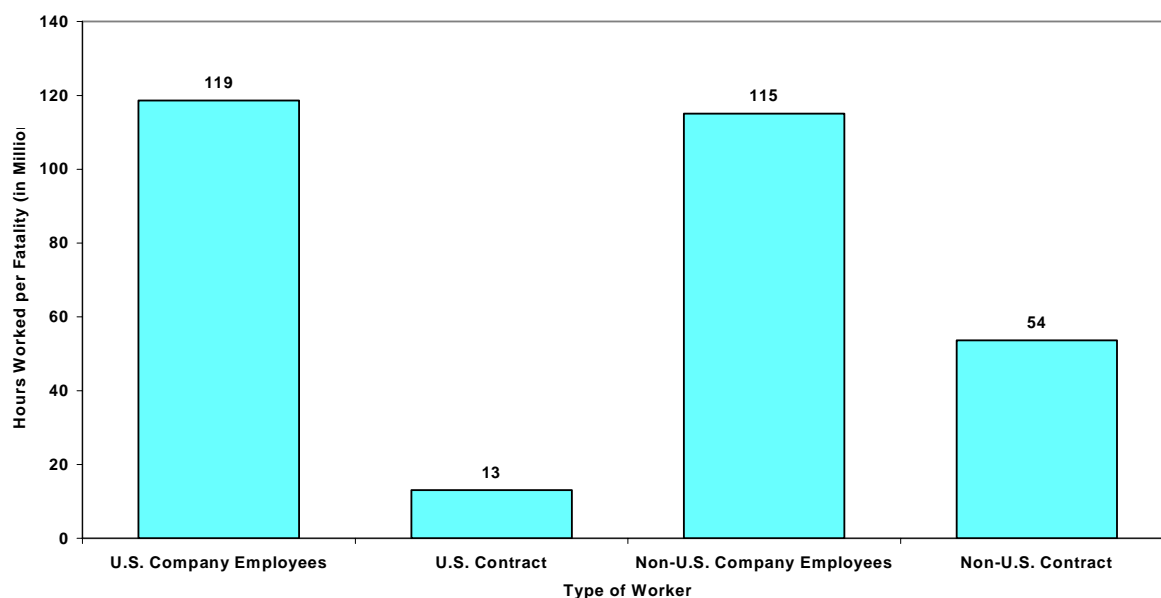
Participants reported seventeen fatal accidents in their operations outside of the U.S. During 2005, three company employees and fourteen contractors died providing service in operations outside the U.S. For company employees, this is equivalent to one fatality per 115 million hours worked or 1.74 fatalities per 100,000 employees. Comparatively, contractors experienced one fatality per 54 million hours worked or 3.73 fatalities per 100,000 workers.

The following graphs compare fatalities between the four categories of workers.

**2005
Occupational Fatality Rates in the Petroleum Industry
as Reported to API**



**2005
Number of Hours Worked per Occupational Fatality
in the Petroleum Industry as Reported to API**



Narratives of Fatal Incidents for Company Operations

API has published information provided by companies on fatal accidents in the petroleum industry since 1933. Companies are asked to describe each incident that occurred within company operations.

In 2005, nine companies reported experiencing forty-one fatalities. Two of those companies submitted detailed information about the circumstances surrounding three of these fatalities. This brief narrative is intended to provide information that could be used to avoid the occurrence of similar accidents in the future.

U.S. OPERATIONS: CONTRACT WORKERS

Refining

June 22, 2005 — A contract crew was working on a tank farm cleaning a large crude tank. A contractor was found unconscious in the contractor’s trailer. ER was unsuccessful in reviving the individual. No toxic gas was detected in or around the crude tank. Investigation later determined there was a problem with the internal wiring of the trailer. The contractor’s work clothes were wet and combined with the improper electrical wiring of the trailer, the individual was electrocuted. Corrective action includes review of procedures for spotting trailers and testing electrical wiring following installation.

NON-U.S. OPERATIONS: COMPANY EMPLOYEES

Offshore Exploration & Production and Drilling

May 18, 2005 —Operator was sent to a normally unmanned wellhead platform to restart wells following a process upset. A 16 inch condensate export riser parted below the cellar deck resulting in a release, explosion and fire.

NON-U.S. OPERATIONS: CONTRACT WORKERS

Onshore Exploration & Production and Drilling

January 31, 2005 —Contractor was driving on a road when he failed to negotiate a gentle curve and ran into a security fence. Prior to incident, deceased had consumed a large meal and according to a witness had fallen asleep in his vehicle at the previous stop. The cause of the accident was driver fatigue. It is believed that the deceased dozed off at the wheel and ran head on into the security fence. The deceased was not wearing a seat belt.

APPENDICES

Page Intentionally Blank

2005 Survey on Petroleum Industry Occupational Injuries, Illnesses and Fatalities
List of Participants

<u>COMPANY</u>	Type of Data Reported			
	<u>U.S. Company Operations</u>	<u>U.S. Contractors</u>	<u>Non-U.S. Company Operations</u>	<u>Non-U.S. Contractors</u>
Alyeska Pipeline Service Company	X	X		
Amerada Hess Corporation	X		X	
American Refining group	X			
Anadarko Petroleum Corporation	X		X	
Barger Engineering Inc	X			
BP	X	X	X	X
BP Pipelines (North America)	X	X		
Bridger Pipeline Company LLC	X			
Buckeye Pipe Line Company	X			
Burlington Resources Inc	X	X	X	X
Chevron Corporation	X	X	X	X
Chevron Pipeline Company	X	X		
CHS Pipelines and Terminals	X			
Ciniza Pipe Line Company	X			
Citgo Petroleum Corporation	X	X		
CNOOC Limited				X
Colonial Pipeline Company	X	X		
ConocoPhillips Inc	X	X	X	X
Cook Inlet Pipe Line Company	X	X		
Croft Petroleum Company	X	X		
Cross Oil Refining & Marketing	X			
Devon Energy Corporation	X	X	X	X
Dixie Pipeline Company	X			
Enbridge (U.S.) Inc	X			
Energy Pro Inc.		X		
Equistar Pipeline Operations	X	X		
Excalibur Exploration		X	X	
Explorer Pipeline Company	X			
ExxonMobil Downstream	X	X	X	X
ExxonMobil Pipeline Co	X	X		
ExxonMobil Upstream	X		X	X
H & C Oil Operating Inc.	X			
Holly Energy Partner	X			
Hunt Oil Company	X		X	
Kerr-McGee Oil & Gas Corporation	X	X	X	X
Kinder Morgan Energy Partners	X			
Koch Pipeline	X			
Laurel Fuel	X			
Loop LLC	X			
Magellan Midstream Partners LP	X			
Marathon Ashland Petroleum	X	X		
Marathon Pipe Line	X	X		
Marathon Oil Company	X	X	X	X

2005 Survey on Petroleum Industry Occupational Injuries, Illnesses and Fatalities
List of Participants

<u>COMPANY</u>	Type of Data Reported			
	<u>U.S. Company Operations</u>	<u>U.S. Contractors</u>	<u>Non-U.S. Company Operations</u>	<u>Non-U.S. Contractors</u>
Motiva Enterprises LLC	X	X		
Murphy Oil Corporation	X		X	
Occidental Oil & Gas Corporation	X	X	X	X
Oiltanking Houston Inc.	X			
ONEOK NGL Pipeline, LP	X	X		
Pacific Energy Partners LP	X			
Placid Refining Company LLC	X	X		
Portland Pipe Line Corporation	X	X	X	X
PPL Interstate Energy Company	X			
Shell Downstream (US & Pipeline)	X	X		
South Carolina Pipeline	X			
Sunoco Inc	X	X		
Sunoco Logistics Partners	X			
TEPPCO	X			
Total Petrochemicals USA Inc.	X	X		
Transmontaigne Product Services Inc	X			
U.S. Oil & Refining Company	X			
Unocal Pipeline Company	X	X		
Valero Refining Co. La.	X	X		
Whitecap Pipeline Company	X	X		
Wolverine Pipeline	X			
Wynnewood Refining Company	X			
Wyoming Pipeline Company	X			



**Survey on Petroleum Industry
Occupational Injuries, Illnesses and Fatalities for the Year 2005**

Company Name: _____

Contact Person: _____

Address: _____

Telephone: _____ Fax: _____

E-mail: _____

This form also includes data for the following subsidiaries and/or affiliates:

_____	_____
_____	_____
_____	_____
_____	_____

Please return your completed survey by February 6, 2006

to:

American Petroleum Institute

Statistics - OII

1220 L Street, NW, Washington, DC 20005-4070

Attn: Jeff Obermiller

Tel: (202) 682-8508 Fax: (202) 962-4730

E-mail: obermiller@api.org

**Survey on Petroleum Industry
Occupational Injuries, Illnesses and Fatalities for the Year 2005
Data Entry Form 1 -- U.S. Operations: Company Employees**

Company: _____

I do not wish to share my individual company data. Please note, if you check this box you **will not** have access to the Full Benchmarking Reports or other companies' Individual Reports for this type of worker. You will **only** have access to **your** report and the Limited Benchmarking Reports.

For each Function enter the sum of cases for both Severity and Type. Each case requires an entry both for Severity and Type			Classify Cases by Severity			Enter Types of Cases		Total OSHA Recordable Cases
			Each case should be entered only once in the column representing the greatest severity			Choose either injury or illness. Each case should be entered only in one Column as Injury or Illness		
Function	Average Number of Employees (Optional)	Total Hours Worked (Thousands)	Case Severity			Injury	Illness	Total OSHA Recordable Cases
			Death	Days Away From Work	Job Transfer or Restriction (Optional)	All Injury Cases (Optional)	All Illness Cases (Optional)	
This is where you can find the information for the column above on the OSHA 300 Form			Column (G)	Column (H)	Column (I)	Column (M1)	Sum of Columns (M2) + (M3) + (M4) + (M5)	Sum of Columns (M1) + (M2) + (M3) + (M4) + (M5)
A. UPSTREAM								
1. Offshore Expl & Prodn and Drilling ¹								
2. Onshore Expl & Prodn and Drilling ¹								
3. Gas Processing								
4. Upstream Support Services								
B. DOWNSTREAM								
1. Marketing-Wholesale								
2. Marketing-Retail								
3. Marketing-Not separated ²								
4. Refining ¹								
5. Lubricants/Specialties								
6. Downstream Support Services								
C. PIPELINE								
1. Pipeline-Liquid								
2. Pipeline-Gas								
3. Pipeline-Not separated ³								
D. MARINE								
E. RESEARCH & DEVELOPMENT								
F. SUPPORT SERVICES⁴								

¹ Include Power Generation personnel that support this function.
² Marketing data unable to be separated into Wholesale or Retail functions.
³ Pipeline data unable to be separated into Liquid or Gas functions.
⁴ Not covered under Operating Segments.

SHIFT/EXPOSURE DATA (Optional):

	Offshore E&P and Drilling	Marine
Hours worked or exposure per while on duty		
Number of days on per duty cycle		
Number of days off per duty cycle		

Comments:

**Survey on Petroleum Industry
Occupational Injuries, Illnesses and Fatalities for the Year 2005
Data Entry Form 2 -- U.S. Operations: Contract Workers**

Company: _____

I do not wish to share my individual company data. Please note, if you check this box you **will not** have access to the Full Benchmarking Reports or other companies' Individual Reports for this type of worker. You will **only** have access to **your** report and the Limited Benchmarking Reports.

For each Function enter the sum of cases for both Severity and Type. Each case requires an entry both for Severity and Type			Classify Cases by Severity Each case should be entered only once in the column representing the greatest severity			Enter Types of Cases Choose either injury or illness Each case should be entered only in one Column as Injury or Illness		Total OSHA Recordable Cases
Function	Average Number of Employees (Optional)	Total Hours Worked (Thousands)	Case Severity			Injury	Illness	
			Death	Days Away From Work	Job Transfer or Restriction (Optional)	All Injury Cases (Optional)	All Illness Cases (Optional)	
This is where you can find the information for the column above on the OSHA 300 Form			Column (G)	Column (H)	Column (I)	Column (M1)	Sum of Columns (M2) + (M3) + (M4) + (M5)	Sum of Columns (M1) + (M2) + (M3) + (M4) + (M5)
A. UPSTREAM								
1. Offshore Expl & Prodn and Drilling ¹								
2. Onshore Expl & Prodn and Drilling ¹								
3. Gas Processing								
4. Upstream Support Services								
B. DOWNSTREAM								
1. Marketing-Wholesale								
2. Marketing-Retail								
3. Marketing-Not separated ²								
4. Refining ¹								
5. Lubricants/Specialties								
6. Downstream Support Services								
C. PIPELINE								
1. Pipeline-Liquid								
2. Pipeline-Gas								
3. Pipeline-Not separated ³								
D. MARINE								
E. RESEARCH & DEVELOPMENT								
F. SUPPORT SERVICES⁴								

¹ Include Power Generation personnel that support this function.
² Marketing data unable to be separated into Wholesale or Retail functions.
³ Pipeline data unable to be separated into Liquid or Gas functions.
⁴ Not covered under Operating Segments.

SHIFT/EXPOSURE DATA (Optional):

	Offshore E&P and Drilling	Marine
Hours worked or exposure per while on duty		
Number of days on per duty cycle		
Number of days off per duty cycle		

Comments:

**Survey on Petroleum Industry
Occupational Injuries, Illnesses and Fatalities for the Year 2005
Data Entry Form 3 -- Non-U.S. Operations: Company Employees**

Company: _____

I do not wish to share my individual company data. Please note, if you check this box you **will not** have access to the Full Benchmarking Reports or other companies' Individual Reports for this type of worker. You will **only** have access to **your** report and the Limited Benchmarking Reports.

For each Function enter the sum of cases for both Severity and Type. Each case requires an entry both for Severity and Type			Classify Cases by Severity Each case should be entered only once in the column representing the greatest severity			Enter Types of Cases Choose either injury or illness Each case should be entered only in one Column as Injury or Illness		Total OSHA Recordable Cases
Function	Average Number of Employees (Optional)	Total Hours Worked (Thousands)	Case Severity			Injury	Illness	
			Death	Days Away From Work	Job Transfer or Restriction (Optional)	All Injury Cases (Optional)	All Illness Cases (Optional)	
This is where you can find the information for the column above on the OSHA 300 Form			Column (G)	Column (H)	Column (I)	Column (M1)	Sum of Columns (M2) + (M3) + (M4) + (M5)	Sum of Columns (M1) + (M2) + (M3) + (M4) + (M5)
A. UPSTREAM								
1. Offshore Expl & Prodn and Drilling ¹								
2. Onshore Expl & Prodn and Drilling ¹								
3. Gas Processing								
4. Upstream Support Services								
B. DOWNSTREAM								
1. Marketing-Wholesale								
2. Marketing-Retail								
3. Marketing-Not separated ²								
4. Refining ¹								
5. Lubricants/Specialties								
6. Downstream Support Services								
C. PIPELINE								
1. Pipeline-Liquid								
2. Pipeline-Gas								
3. Pipeline-Not separated ³								
D. MARINE								
E. RESEARCH & DEVELOPMENT								
F. SUPPORT SERVICES⁴								

¹ Include Power Generation personnel that support this function.
² Marketing data unable to be separated into Wholesale or Retail functions.
³ Pipeline data unable to be separated into Liquid or Gas functions.
⁴ Not covered under Operating Segments.

SHIFT/EXPOSURE DATA (Optional):

	Offshore E&P and Drilling	Marine
Hours worked or exposure per while on duty		
Number of days on per duty cycle		
Number of days off per duty cycle		

Comments:

**Survey on Petroleum Industry
Occupational Injuries, Illnesses and Fatalities for the Year 2005
Data Entry Form 4 -- Non-U.S. Operations: Contract Workers**

Company: _____

I do not wish to share my individual company data. Please note, if you check this box you **will not** have access to the Full Benchmarking Reports or other companies' Individual Reports for this type of worker. You will **only** have access to **your** report and the Limited Benchmarking Reports.

For each Function enter the sum of cases for both Severity and Type. Each case requires an entry both for Severity and Type			Classify Cases by Severity Each case should be entered only once in the column representing the greatest severity			Enter Types of Cases Choose either injury or illness Each case should be entered only in one Column as Injury or Illness		Total OSHA Recordable Cases
Function	Average Number of Employees (Optional)	Total Hours Worked (Thousands)	Case Severity			Injury	Illness	
			Death Column (G)	Days Away From Work Column (H)	Job Transfer or Restriction (Optional) Column (I)	All Injury Cases (Optional) Column (M1)	All Illness Cases (Optional) Sum of Columns (M2) + (M3) + (M4) + (M5)	
This is where you can find the information for the column above on the OSHA 300 Form								
A. UPSTREAM								
1. Offshore Expl & Prodn and Drilling ¹								
2. Onshore Expl & Prodn and Drilling ¹								
3. Gas Processing								
4. Upstream Support Services								
B. DOWNSTREAM								
1. Marketing-Wholesale								
2. Marketing-Retail								
3. Marketing-Not separated ²								
4. Refining ¹								
5. Lubricants/Specialties								
6. Downstream Support Services								
C. PIPELINE								
1. Pipeline-Liquid								
2. Pipeline-Gas								
3. Pipeline-Not separated ³								
D. MARINE								
E. RESEARCH & DEVELOPMENT								
F. SUPPORT SERVICES⁴								

¹ Include Power Generation personnel that support this function.
² Marketing data unable to be separated into Wholesale or Retail functions.
³ Pipeline data unable to be separated into Liquid or Gas functions.
⁴ Not covered under Operating Segments.

SHIFT/EXPOSURE DATA (Optional):

	Offshore E&P and Drilling	Marine
Hours worked or exposure per while on duty		
Number of days on per duty cycle		
Number of days off per duty cycle		

Comments:

Company Name: _____

**Survey on Petroleum Industry
Occupational Injuries, Illnesses and Fatalities for the Year 2005**

**Data Entry Form 5 -- Occupational Fatal Injury Incident
(Complete one form for each incident with one or more fatalities)**

Part A.

U.S. Operations:
Non U.S. Operations:

1. Date of incident: _____ 2. Number of Fatalities in this incident: _____
3. Sex and age of Victims: _____

4. Function (Enter number of fatalities for each)

Expl & Prodn and Drilling ¹ :	<input type="text"/>	Refining ¹ :	<input type="text"/>	Marine:	<input type="text"/>
Gas Processing:	<input type="text"/>	Lubricants/Specialties:	<input type="text"/>	Research & Dev:	<input type="text"/>
Upstream Support Services:	<input type="text"/>	Downstream Support Services:	<input type="text"/>	Support Services ⁴ :	<input type="text"/>
Marketing -- Wholesale:	<input type="text"/>	Pipeline -- Liquid:	<input type="text"/>		
Marketing -- Retail:	<input type="text"/>	Pipeline -- Gas:	<input type="text"/>		
Marketing -- Not separated ² :	<input type="text"/>	Pipeline -- Not separated ³ :	<input type="text"/>		

5. Offshore _____ Not offshore _____

6. Occupational Category (Enter number for each)

Admin., Mgmt., Sales, Support:	<input type="text"/>	Drilling/Well Service Operator:	<input type="text"/>	Maintenance, Craftsman:	<input type="text"/>
Foreman, Supervisor:	<input type="text"/>	Transportation Operator:	<input type="text"/>	Manual Labor:	<input type="text"/>
Engineer/Scientist/Technician:	<input type="text"/>	Heavy Equipment Operator:	<input type="text"/>	Other (describe):	<input type="text"/>
Process/Equipment Operator:	<input type="text"/>	Service Station Workers:	<input type="text"/>		

7. Specific job title: _____

8. Medical cause of death: _____

9. Type of incident:

<input type="checkbox"/>	Motor Vehicle	<input type="checkbox"/>	Struck by Equipment
<input type="checkbox"/>	Other Transportation	<input type="checkbox"/>	Fall
<input type="checkbox"/>	Fires and Explosions	<input type="checkbox"/>	Toxic Gas or Liquid
<input type="checkbox"/>	Drowning	<input type="checkbox"/>	Electrocution
<input type="checkbox"/>	Caught In or Between	<input type="checkbox"/>	Other : _____

10. Narrative of Incident. PLEASE REFER TO THE **EXAMPLE NARRATIVE** ON PAGE 3 OF THIS DATA ENTRY FORM FOR AN EXAMPLE OF THE MANNER IN WHICH FATALITY NARRATIVE INFORMATION SHOULD BE PROVIDED.

NOTE: Your company's name will not be disclosed in the annual fatality reports published by API.

¹ Include Power Generation personnel that support this function.
² Marketing data unable to be separated into Wholesale or Retail functions.
³ Pipeline data unable to be separated into Liquid or Gas functions.
⁴ Not covered under Operating Segments.

Additional copies are available through IHS

Phone Orders: 1-800-854-7179 (Toll-free in the U.S. and Canada)
303-397-7956 (Local and International)
Fax Orders: 303-397-2740
Online Orders: global.ihs.com

Information about API Publications, Programs and Services
is available on the web at www.api.org



1220 L Street, NW
Washington, DC 20005-4070
USA

202.682.8000

Product No. K23831