

# **Manual of Petroleum Measurement Standards Chapter 10—Sediment and Water**

## **Section 1—Standard Test Method for Sediment in Crude Oils and Fuel Oils by the Extraction Method**

THIRD EDITION, NOVEMBER 2007





# **Manual of Petroleum Measurement Standards Chapter 10—Sediment and Water**

## **Section 1—Standard Test Method for Sediment in Crude Oils and Fuel Oils by the Extraction Method**

**Measurement Coordination**

THIRD EDITION, NOVEMBER 2007



## Special Notes

API publications necessarily address problems of a general nature. With respect to particular circumstances, local, state, and federal laws and regulations should be reviewed.

Neither API nor any of API's employees, subcontractors, consultants, committees, or other assignees make any warranty or representation, either express or implied, with respect to the accuracy, completeness, or usefulness of the information contained herein, or assume any liability or responsibility for any use, or the results of such use, of any information or process disclosed in this publication. Neither API nor any of API's employees, subcontractors, consultants, or other assignees represent that use of this publication would not infringe upon privately owned rights.

API publications may be used by anyone desiring to do so. Every effort has been made by the Institute to assure the accuracy and reliability of the data contained in them; however, the Institute makes no representation, warranty, or guarantee in connection with this publication and hereby expressly disclaims any liability or responsibility for loss or damage resulting from its use or for the violation of any authorities having jurisdiction with which this publication may conflict.

API publications are published to facilitate the broad availability of proven, sound engineering and operating practices. These publications are not intended to obviate the need for applying sound engineering judgment regarding when and where these publications should be utilized. The formulation and publication of API publications is not intended in any way to inhibit anyone from using any other practices.

Any manufacturer marking equipment or materials in conformance with the marking requirements of an API standard is solely responsible for complying with all the applicable requirements of that standard. API does not represent, warrant, or guarantee that such products do in fact conform to the applicable API standard.

All rights reserved. No part of this work may be reproduced, stored in a retrieval system, or transmitted by any means, electronic, mechanical, photocopying, recording, or otherwise, without prior written permission from the publisher. Contact the Publisher, API Publishing Services, 1220 L Street, N.W., Washington, D.C. 20005.

*Copyright © 2007 American Petroleum Institute*

## Foreword

Nothing contained in any API publication is to be construed as granting any right, by implication or otherwise, for the manufacture, sale, or use of any method, apparatus, or product covered by letters patent. Neither should anything contained in the publication be construed as insuring anyone against liability for infringement of letters patent.

This document was produced under API standardization procedures that ensure appropriate notification and participation in the developmental process and is designated as an API standard. Questions concerning the interpretation of the content of this publication or comments and questions concerning the procedures under which this publication was developed should be directed in writing to the Director of Standards, American Petroleum Institute, 1220 L Street, N.W., Washington, D.C. 20005. Requests for permission to reproduce or translate all or any part of the material published herein should also be addressed to the director.

Generally, API standards are reviewed and revised, reaffirmed, or withdrawn at least every five years. A one-time extension of up to two years may be added to this review cycle. Status of the publication can be ascertained from the API Standards Department, telephone (202) 682-8000. A catalog of API publications and materials is published annually and updated quarterly by API, 1220 L Street, N.W., Washington, D.C. 20005.

Suggested revisions are invited and should be submitted to the Standards Department, API, 1220 L Street, NW, Washington, D.C. 20005, [standards@api.org](mailto:standards@api.org).



Contents

|   | Page |
|---|------|
| 1 Scope .....   | 1    |
| 2 Referenced Documents.....                                   | 1    |
| 3 Summary of Test Method .....                                | 1    |
| 4 Significance and Use.....                                   | 1    |
| 5 Apparatus .....   | 1    |
| 6 Solvent .....   | 3    |
| 7 Sampling.....   | 4    |
| 8 Procedure.....  | 4    |
| 9 Calculation .....   | 4    |
| 10 Report .....   | 4    |
| 11 Precision and Bias.....                                    | 5    |
| 12 Keywords .....   | 5    |
| <br>Annex A1 Warning Statement.....                           | 5    |
| Summary of Changes.....                                       | 6    |
| <br>Figures   |      |
| 1 Extraction Apparatus for Determination of Sediment.....     | 2    |
| 2 Basket Thimble Support.....                                 | 3    |
| <br>Table   |      |
| 1 Typical Characteristics for ACS Reagent Grade Toluene ..... | 4    |

Copyright American Petroleum Institute  
Provided by IHS under license with API  
No reproduction or networking permitted without license from IHS





Designation: D 473 – 07

An American National Standard



Designation: Manual of Petroleum Measurement Standards (MPMS), Chapter 10.1



Designation: 53/82

## Standard Test Method for Sediment in Crude Oils and Fuel Oils by the Extraction Method<sup>1</sup>

This standard is issued under the fixed designation D 473; the number immediately following the designation indicates the year of original adoption or, in the case of revision, the year of last revision. A number in parentheses indicates the year of last reapproval. A superscript epsilon (ε) indicates an editorial change since the last revision or reapproval.

*This standard has been approved for use by agencies of the Department of Defense.*

### 1. Scope\*

1.1 This test method covers the determination of sediment in crude oils and fuel oils by extraction with toluene. The precision applies to a range of sediment levels from 0.01 to 0.40 % mass, although higher levels may be determined.

NOTE 1—Precision on recycled oils and crank case oils is unknown and additional testing is required to determine that precision.

1.2 The values stated in SI units are to be regarded as the standard. The values given in parentheses are for information only.

1.3 *This standard does not purport to address all of the safety concerns, if any, associated with its use. It is the responsibility of the user of this standard to establish appropriate safety and health practices and determine the applicability of regulatory limitations prior to use. For specific warning statements, see 5.1.1.6 and 6.1.*

### 2. Referenced Documents

#### 2.1 ASTM Standards:<sup>2</sup>

D 4057 Practice for Manual Sampling of Petroleum and Petroleum Products

D 4177 Practice for Automatic Sampling of Petroleum and Petroleum Products

D 5854 Practice for Mixing and Handling of Liquid Samples of Petroleum and Petroleum Products

E 29 Practice for Using Significant Digits in Test Data to

Determine Conformance with Specifications

#### 2.2 API Standards:<sup>3</sup>

Chapter 8.1 Manual Sampling of Petroleum and Petroleum Products (ASTM Practice D 4057)

Chapter 8.2 Automatic Sampling of Petroleum and Petroleum Products (ASTM Practice D 4177)

Chapter 8.3 Mixing and Handling of Liquid Samples of Petroleum and Petroleum Products (ASTM Practice D 5854)

#### 2.3 ISO Standard:<sup>4</sup>

5272 Toluene for industrial use—Specifications

### 3. Summary of Test Method

3.1 Extract test portion of a representative oil sample, contained in a refractory thimble, with hot toluene until the residue reaches constant mass. The mass of residue, calculated as a percentage, is reported as *sediment by extraction*.

### 4. Significance and Use

4.1 A knowledge of the sediment content of crude oils and fuel oils is important both to the operation of refining and the buying or selling of these commodities.

### 5. Apparatus

5.1 Usual laboratory apparatus and glassware, together with the following are required for this test method.

5.1.1 *Extraction Apparatus*—Use the apparatus illustrated in Figs. 1 and 2 and consisting of the elements described in 5.1.1.1–5.1.1.3.

5.1.1.1 *Extraction Flask*—Use a wide-neck (Erlenmeyer) flask of 1-L capacity, with a minimum external neck diameter of 50 mm, for the procedure.

<sup>3</sup> Available from American Petroleum Institute (API), 1220 L. St., NW, Washington, DC 20005-4070, <http://api-ec.api.org>.

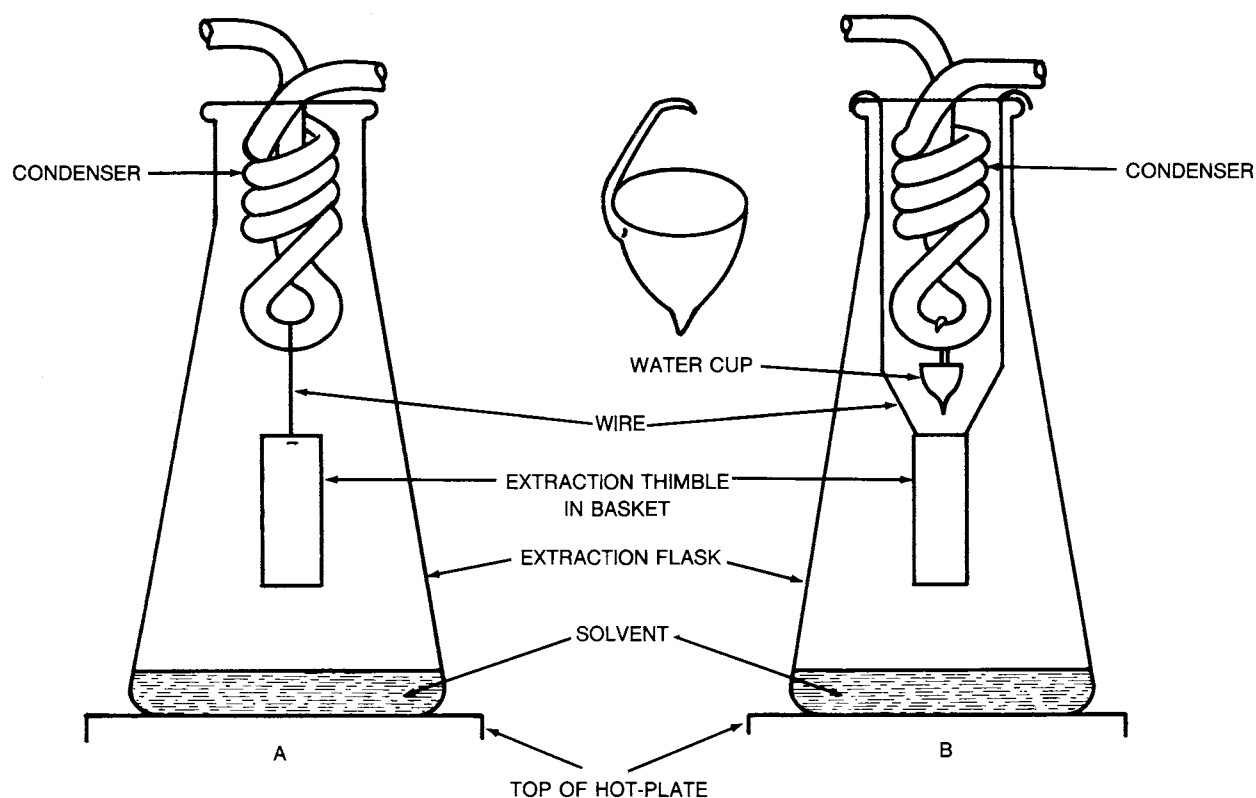
<sup>4</sup> Available from American National Standards Institute (ANSI), 25 W. 43rd St., 4th Floor, New York, NY 10036, <http://www.ansi.org>.

<sup>1</sup> This test method is under the jurisdiction of ASTM Committee D02 on Petroleum Products and Lubricants and the API Committee on Petroleum Measurement, and is the direct responsibility of Subcommittee D02.02.0B /COMQ, the joint ASTM-API Committee on Sampling, Sediment, Water.

Current edition approved May 1, 2007. Published June 2007. Originally approved in 1938. Last previous edition approved in 2006 as D 473–02(2006).

<sup>2</sup> For referenced ASTM standards, visit the ASTM website, [www.astm.org](http://www.astm.org), or contact ASTM Customer Service at [service@astm.org](mailto:service@astm.org). For *Annual Book of ASTM Standards* volume information, refer to the standard's Document Summary page on the ASTM website.

\*A Summary of Changes section appears at the end of this standard.



NOTE—Apparatus B shows the water cup in position.  
**FIG. 1 Extraction Apparatus for Determination of Sediment**

**5.1.1.2 Condenser**—A condenser in the form of a metal coil approximately 25 mm in diameter and 50 mm in length attached to, and with the ends projecting through, a lid of sufficient diameter to cover the neck of the flask as shown in Fig. 1. The coil shall be made from stainless steel, tin, tin-plated copper, or tin-plated brass tubing having an outside diameter of 5 to 8 mm and a wall thickness of 1.5 mm. If constructed of tin-plated copper or brass, the tin coating shall have a minimum thickness of 0.075 mm. The exposed surface of the coil for cooling purposes is about 115 cm<sup>2</sup>.

NOTE 2—The use of a water flowmeter/controller unit that monitors water flow to the condenser that shuts off the heat source when the flow rate drops below a pre-set limit has been found suitable to prevent vaporized toluene from igniting. The use of such a device is recommended.

**5.1.1.3 Extraction Thimble<sup>5</sup>**—The extraction thimble shall be of a refractory porous material, pore size 20.0 to 30.0 μm (as certified by the manufacturer), 25 mm in diameter by 70 mm in height, weighing not less than 15 g and not more than 17 g. Suspend the thimble from the condenser coil by means of a basket so that it hangs approximately midway between the surface of the extracting solvent and the bottom of the condenser coil.

<sup>5</sup>The sole source of supply of the extraction thimble, AN 485, 25 × 70-mm, coarse porosity, drawing number QA 005163, known to the committee at this time is Saint-Gobain/Norton Industrial Ceramics Corporation of Worcester, MA. If you are aware of alternative suppliers, please provide this information to ASTM International Headquarters. Your comments will receive careful consideration at a meeting of the responsible technical committee,<sup>1</sup> which you may attend.

**5.1.1.4 Thimble Basket**—The thimble basket shall be corrosion-resistant and shall be made of platinum, stainless steel, nickel-chromium alloy, or similar material. Fig. 2 shows the design and dimensions of two typical baskets that have been used successfully in the industry.

**5.1.1.5 Water Cup**—Use a water cup when testing a sample determined to have a water content greater than 10 % volume (see Fig. 1, Apparatus B). The cup shall be made of glass, conical in shape, approximately 20 mm in diameter and 25 mm deep, and have a capacity of approximately 3 mL. A glass hook fused on the rim at one side is so shaped that when hung on the condenser the cup hangs with its rim reasonably level. In this procedure, suspend the thimble basket as shown in Fig. 1, Apparatus A by means of the corrosion-resistant wire looped over the bottom of the condenser coil and attached to the basket supports, or as in Fig. 1, Apparatus B, where the wire supports of the basket are attached to hooks soldered to the underside of the condenser lid.

**5.1.1.6 Source of Heat**—Use a source of heat, preferably a hot plate operated under a ventilated hood, suitable for vaporizing toluene (**Warning**—Flammable.)

**5.2 Analytical Balance**—Use an analytical balance, with an accuracy of 0.1 mg. Verify the balance, at least annually, against weights traceable to a national standards body such as the National Institute of Standards and Technology (NIST).

**5.3 Non-aerating Mixer**—Use a non-aerating mixer, meeting the verification of mixing efficiency requirements specified in Practice D 5854 (API Chapter 8.3). Either insertion mixers

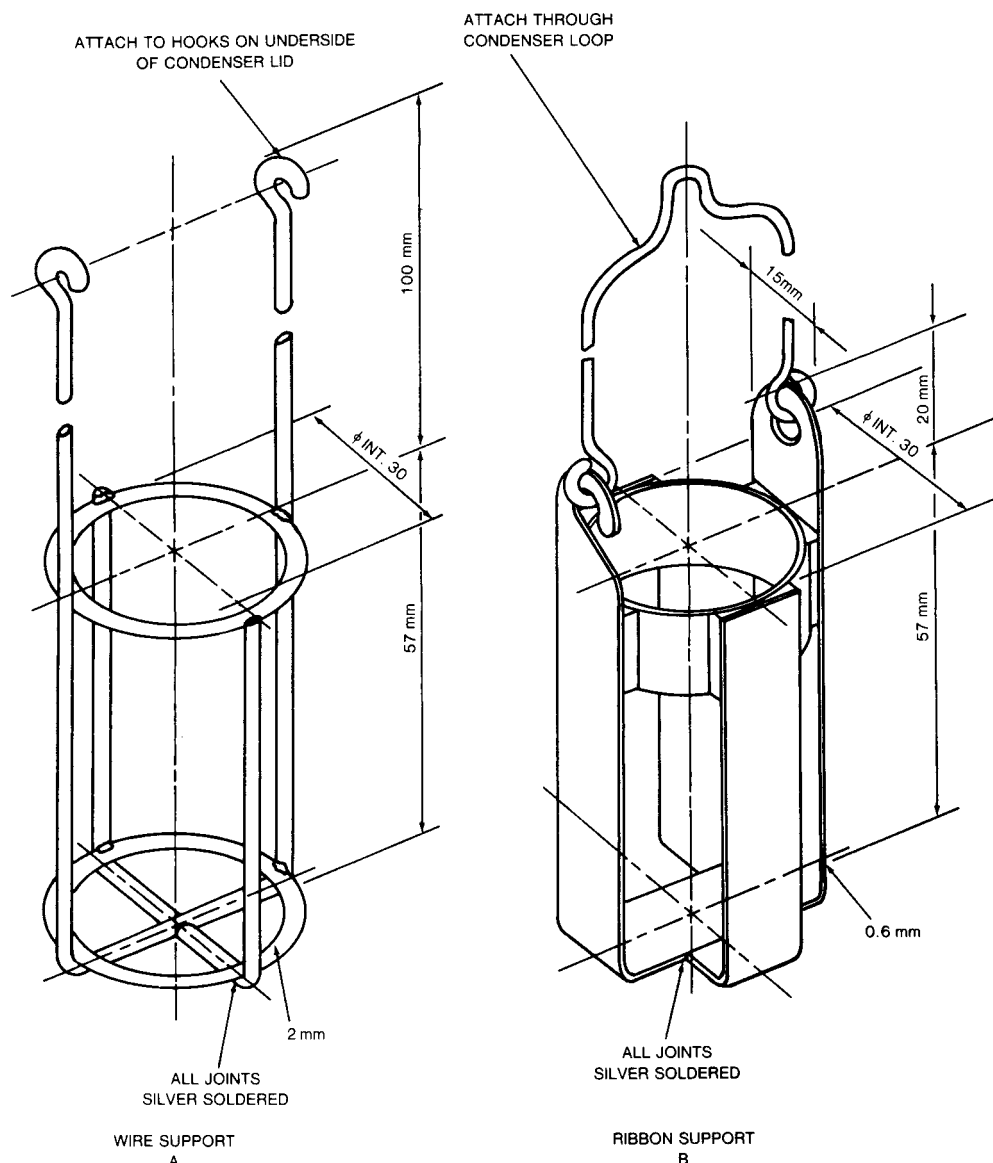


FIG. 2 Basket Thimble Support

or circulating mixers or circulating external mixers are acceptable provided they meet the criteria in Practice D 5854 (API Chapter 8.3).

5.4 *Oven*—Use an oven capable of maintaining a temperature of 115 to 120°C (240 to 250°F).

5.5 *Cooling Vessel*—Use a desiccator without desiccant as a cooling vessel.

5.6 *Temperature Measuring Device*—Such as a thermometer, capable of measuring the temperature of the sample to the nearest 1°C (2°F).

## 6. Solvent

6.1 *Toluene*—Reagent grade conforming to the specifications of the Committee on Analytical Reagents of the American

Chemical Society (ACS)<sup>6</sup> or to Grade 2 of ISO 5272. (**Warning**—Flammable. Keep away from heat, sparks and open flame. Vapor harmful. Toluene is toxic. Particular care shall be taken to avoid breathing the vapors and to protect the eyes. Keep the container closed. Use with adequate ventilation. Avoid prolonged or repeated contact with the skin.)

<sup>6</sup> *Reagent Chemicals, American Chemical Society Specifications*, American Chemical Society, Washington, DC. For suggestions on the testing of reagents not listed by the American Chemical Society, see *Analar Standards for Laboratory Chemicals*, BDH Ltd., Poole, Dorset, U.K., and the United States Pharmacopeia and National Formulary, U.S. Pharmacopeial Convention, Inc., (USPC), Rockville, MD 20852.

**TABLE 1 Typical Characteristics for ACS Reagent Grade Toluene**

|   |             |
|---|-------------|
| Assay   | 99.5+ %     |
| Color (APHA)  | 10          |
| Boiling range (initial to dry point) <sup>A</sup>     | 2.0°C       |
| Residue after evaporation                             | 0.001 %     |
| Substances darkened by H <sub>2</sub> SO <sub>4</sub> | passes test |
| Sulfur compounds (as S)                               | 0.003 %     |
| Water (H <sub>2</sub> O) (by Karl Fischer titration)  | 0.03 %      |

<sup>A</sup> Recorded boiling point 110.6°C.

6.1.1 The typical characteristics for the ACS reagent are shown in **Table 1**.

## 7. Sampling

7.1 Sampling shall include all steps required to obtain an aliquot of the contents of any pipe, tank, or other system and to place the sample into the laboratory test container.

7.2 Only use representative samples obtained as specified in Practices **D 4057** (API **Chapter 8.1**) and **D 4177** (API **Chapter 8.2**) for this test method.

7.3 Draw test portions from the laboratory samples immediately after thorough mixing. Heat viscous samples to a temperature which renders the sample liquid, and homogenize using a mixer as described in **5.3**, as necessary. The difficulties of obtaining a representative test portion for this determination are usually great, hence the need for great attention to the mixing and aliquoting steps.

7.4 As specified in Practice **D 5854** (API **Chapter 8.3**), record the temperature of the sample before mixing. Mix the laboratory sample in its original container, using the mixing time, mixing power (speed), and position relative to the bottom of the container appropriate to the crude petroleum or fuel oil being analyzed, and as established by the verification of mixing efficiency. To avoid the loss of light ends from crude oil or other samples containing volatile material, operate the mixer through a gland in the closure of the sample container. Take the test portion for analysis immediately after mixing. Record the temperature of the sample immediately after mixing. If the rise in temperature during mixing exceeds 10°C (20°F), cool the sample, and repeat the mixing at a lower energy input. A rise in temperature greater than 10°C (20°F) may result in a decrease in viscosity that is sufficient for the sediment to settle.

## 8. Procedure

8.1 For referee tests, use a new extraction thimble (**5.1.1.3**) prepared in accordance with **8.2**. For routine tests, thimbles may be reused. When reusing thimbles, the extraction to constant mass for one determination should be considered as the preliminary extraction for the succeeding determination. After several determinations (the accumulated sediment may be sufficient to interfere with further determinations), follow the procedure described in **8.3** to remove the combustible portion of the accumulated sediment. Avoid excessive reuse of thimbles, as over time the pores become clogged with inorganic material resulting in falsely high results. When in doubt regarding a higher than normal result, discard the thimble and retest using a new thimble.

8.2 *Preparation of a New Thimble*—Rub the outside surface with fine sandpaper and remove all loosened material with a stiff brush. Give the thimble a preliminary extraction with the

toluene, allowing the solvent to drip from the thimble for at least 1 h. Then dry the thimble for 1 h at a temperature of 115 to 120°C (240 to 250°F); cool in a cooling vessel, for 1 h, and weigh to the nearest 0.1 mg. Repeat the extraction until the masses of the thimble after two successive extractions do not differ by more than 0.2 mg.

8.3 *Preparation of a Used Thimble*—Remove the combustible portion of the accumulated sediment by heating the thimble to a dull red heat for 20 min (preferably in an electric furnace maintained at approximately 750°C (1380°F)). Subject the thimble to a preliminary extraction as described in **8.2** before using it for another determination.

8.4 Place an estimated 10-g test portion of the sample in the thimble immediately after the sample has been mixed. Do not attempt to adjust this estimated 10-g portion to any exact predetermined amount. Weigh the thimble plus test portion to the nearest 0.01 g. Add 150 mL to 200 mL of toluene to the flask. Place the thimble in the extraction apparatus, place on the heat source, and extract with the hot toluene for 30 min after the solvent dripping from the thimble becomes colorless. Ensure that the rate of extraction is such that the surface of the mixture of oil and toluene in the thimble does not rise higher than to within 20 mm of the top.

8.5 When testing samples determined to have a water content greater than 10 % volume, use the assembly shown in **Fig. 1**, Apparatus B. In this procedure, remove any water in the test portion as its toluene azeotrope and is collected in the water cup, where it separates as a bottom layer. The toluene layer overflows into the thimble. If the cup becomes full of water, allow the apparatus to cool and empty the cup.

8.6 After the extraction is completed, dry the thimble for 1 h at 115 to 120°C (240 to 250°F) in the oven; cool in the cooling vessel, for 1 h; and weigh to the nearest 0.1 mg.

8.7 Repeat the extraction, allowing the solvent to drip from the thimble for at least 1 h but not longer than 1.25 h; dry, cool, and weigh the thimble as described in **8.6**. Repeat this extraction for further 1-h periods, if necessary, until the masses of the dried thimble plus sediment after two successive extractions do not differ by more than 0.2 mg.

## 9. Calculation

9.1 Calculate the sediment content of the sample as a percentage by mass of the original sample.

$$S = \frac{m_3 - m_1}{m_2 - m_1} \times 100 \quad (1)$$

where:

$S$  = sediment content of the sample as a percentage by mass,

$m_1$  = mass, of the thimble, g,

$m_2$  = mass, of the thimble plus test portion, g, and

$m_3$  = mass of the thimble plus sediment, g.

## 10. Report

10.1 For each sample with a calculated sediment content >0.005 % m/m as determined by Eq 1, report the sediment content of the sample, as *sediment by extraction*, as a percentage by mass, rounded to the nearest 0.01 % m/m following Practice **E 29** rounding conventions. For each sample with a

calculated sediment content  $\leq 0.005\%$  m/m as determined in Eq 1, report as, “0 % m/m.” The test result shall reference Test Method D 473/API MPMS Chapter 10.1 as the procedure used.

NOTE 3—Since water and sediment values are commonly reported as volume percent, calculate the volume of the sediment as a percentage of the original sample. As a major portion of the sediment probably would be sand (silicon dioxide, which has a density of 2.32) and a small amount of other naturally occurring materials (with a relative density lower than that of sand), use an arbitrary density of 2.0 for the resulting sediment. Then, to obtain volume percent sediment, divide the mass percent sediment by 2.0 and multiply by the relative density of the crude or fuel oil.

$$S_v = \frac{S}{2.0} \times \text{relative density of the oil} \quad (2)$$

where:

$S_v$  = sediment content of the sample as a percentage by volume, and  
 $S$  = sediment content of the sample as a percentage by mass.

10.2 Report that the sample mixing procedure was performed in accordance with the procedures specified in Practice D 5854 (API Chapter 8.3). Report the temperature of the sample before and after mixing.

10.3 The test report shall also contain all details necessary for complete identification of the product tested; any deviation, by agreement or otherwise, from the procedure specified; and the date of the test.

## 11. Precision and Bias

11.1 *Precision*—The precision of the test method, as based on mass percent and as obtained by statistical examination of interlaboratory test results in the range 0 to 0.4 %, is described in 11.1.1 and 11.1.2.

11.1.1 *Repeatability*—The difference between successive test results, obtained by the same operator with the same apparatus under constant operating conditions on identical test material, would, in the long run, in the normal and correct operation of the test method, exceed the following value in only one case in twenty:

$$r = 0.017 + 0.255 S \quad (3)$$

where:

$r$  = repeatability of the test, and  
 $S$  = average result, as a percentage by mass, of the values being compared.

11.1.2 *Reproducibility*—The difference between two single and independent test results obtained by different operators working in different laboratories on identical test material, would, in the long run, in the normal and correct operation of the test method, exceed the following value in only one case in twenty:

$$R = 0.033 + 0.255 S \quad (4)$$

where:

$R$  = reproducibility of the test, and  
 $S$  = average result, as a percentage by mass, of the values being compared.

11.2 *Bias*—The procedure in this test method has no bias because the value of sediment can be defined only in terms of a test method.

## 12. Keywords

12.1 crude oil; extraction; fuel oil; sampling; sediment

# ANNEX

## (Mandatory Information)

### A1. WARNING INFORMATION

#### A1.1 Toluene

- A1.1.1 Keep away from heat, sparks, and open flame.
- A1.1.2 Vapor harmful.
- A1.1.3 Toluene is toxic.
- A1.1.4 Particular care must be taken to avoid breathing the vapor and to protect the eyes.

- A1.1.5 Keep container closed.
- A1.1.6 Use with adequate ventilation.
- A1.1.7 Avoid prolonged or repeated contact with the skin.

## SUMMARY OF CHANGES

Subcommittee D02.02.0B has identified the location of selected changes to this standard since the last issue (D 473–02(2006)) that may impact the use of this standard.

- (1) Updated 1.3, 5.1.1.4, 5.6, and 10.1.
- (2) Added Practice E 29.

- (3) Added Note 2.



# 2007 Publications Order Form

Effective January 1, 2007.

**API Members receive a 30% discount where applicable.**

The member discount does not apply to purchases made for the purpose of resale or for incorporation into commercial products, training courses, workshops, or other commercial enterprises.

Available through IHS:

Phone Orders: **1-800-854-7179** (Toll-free in the U.S. and Canada)  
**303-397-7956** (Local and International)

Fax Orders: **303-397-2740**

Online Orders: **global.ihs.com**

Date: \_\_\_\_\_

☐ **API Member** (Check if Yes)

**Invoice To** (☐ Check here if same as "Ship To")

Name: \_\_\_\_\_

Title: \_\_\_\_\_

Company: \_\_\_\_\_

Department: \_\_\_\_\_

Address: \_\_\_\_\_

City: \_\_\_\_\_ State/Province: \_\_\_\_\_

Zip/Postal Code: \_\_\_\_\_ Country: \_\_\_\_\_

Telephone: \_\_\_\_\_

Fax: \_\_\_\_\_

E-Mail: \_\_\_\_\_

**Ship To** (UPS will not deliver to a P.O. Box)

Name: \_\_\_\_\_

Title: \_\_\_\_\_

Company: \_\_\_\_\_

Department: \_\_\_\_\_

Address: \_\_\_\_\_

City: \_\_\_\_\_ State/Province: \_\_\_\_\_

Zip/Postal Code: \_\_\_\_\_ Country: \_\_\_\_\_

Telephone: \_\_\_\_\_

Fax: \_\_\_\_\_

E-Mail: \_\_\_\_\_

| Quantity | Product Number | Title | SO★ | Unit Price | Total |
|----------|----------------|-------|-----|------------|-------|
|          |                |       |     |            |       |
|          |                |       |     |            |       |
|          |                |       |     |            |       |
|          |                |       |     |            |       |
|          |                |       |     |            |       |
|          |                |       |     |            |       |
|          |                |       |     |            |       |
|          |                |       |     |            |       |

☐ **Payment Enclosed**      ☐ **P.O. No.** (Enclose Copy) \_\_\_\_\_

☐ **Charge My IHS Account No.** \_\_\_\_\_

☐ **VISA**    ☐ **MasterCard**    ☐ **American Express**    ☐ **Diners Club**    ☐ **Discover**

Credit Card No.: \_\_\_\_\_

Print Name (As It Appears on Card): \_\_\_\_\_

Expiration Date: \_\_\_\_\_

Signature: \_\_\_\_\_

**Subtotal**

**Applicable Sales Tax** (see below)

**Rush Shipping Fee** (see below)

**Shipping and Handling** (see below)

**Total (in U.S. Dollars)**

★ **To be placed on Standing Order for future editions of this publication, place a check mark in the SO column and sign here:**

*Pricing and availability subject to change without notice.*

**Mail Orders** – Payment by check or money order in U.S. dollars is required except for established accounts. State and local taxes, \$10 processing fee, and 5% shipping must be added. Send mail orders to: **API Publications, IHS, 15 Inverness Way East, c/o Retail Sales, Englewood, CO 80112-5776, USA.**

**Purchase Orders** – Purchase orders are accepted from established accounts. Invoice will include actual freight cost, a \$10 processing fee, plus state and local taxes.

**Telephone Orders** – If ordering by telephone, a \$10 processing fee and actual freight costs will be added to the order.

**Sales Tax** – All U.S. purchases must include applicable state and local sales tax. Customers claiming tax-exempt status must provide IHS with a copy of their exemption certificate.

**Shipping (U.S. Orders)** – Orders shipped within the U.S. are sent via traceable means. Most orders are shipped the same day. Subscription updates are sent by First-Class Mail. Other options, including next-day service, air service, and fax transmission are available at additional cost. Call 1-800-854-7179 for more information.

**Shipping (International Orders)** – Standard international shipping is by air express courier service. Subscription updates are sent by World Mail. Normal delivery is 3-4 days from shipping date.

**Rush Shipping Fee** – Next Day Delivery orders charge is \$20 in addition to the carrier charges. Next Day Delivery orders must be placed by 2:00 p.m. MST to ensure overnight delivery.

**Returns** – All returns must be pre-approved by calling the IHS Customer Service Department at 1-800-624-3974 for information and assistance. There may be a 15% restocking fee. Special order items, electronic documents, and age-dated materials are non-returnable.



# There's more where this came from.

The American Petroleum Institute provides additional resources and programs to the oil and natural gas industry which are based on API® Standards. For more information, contact:

- |   |  |
|---|--|
| • API Monogram® Licensing Program                         | Phone: 202-962-4791<br>Fax: 202-682-8070 |
| • American Petroleum Institute Quality Registrar (APIQR®) | Phone: 202-962-4791<br>Fax: 202-682-8070 |
| • API Spec Q1® Registration                               | Phone: 202-962-4791<br>Fax: 202-682-8070 |
| • API Perforator Design Registration                      | Phone: 202-962-4791<br>Fax: 202-682-8070 |
| • API ISO/TS 29001 Registration                           | Phone: 202-962-4791<br>Fax: 202-682-8070 |
| • API Training Provider Certification Program             | Phone: 202-682-8490<br>Fax: 202-682-8070 |
| • Individual Certification Programs                       | Phone: 202-682-8064<br>Fax: 202-682-8348 |
| • Engine Oil Licensing and Certification System (EOLCS)   | Phone: 202-682-8516<br>Fax: 202-962-4739 |
| • API PetroTEAM™ (Training, Education and Meetings)       | Phone: 202-682-8195<br>Fax: 202-682-8222 |

Check out the API Publications, Programs, and Services Catalog online at [www.api.org](http://www.api.org).



American Petroleum Institute

Helping You Get  
The Job Done Right.®







1220 L Street, NW  
Washington, DC 20005-4070  
USA

202.682.8000

**Additional copies are available through IHS**

Phone Orders: 1-800-854-7179 (Toll-free in the U.S. and Canada)  
303-397-7956 (Local and International)

Fax Orders: 303-397-2740

Online Orders: [global.ihs.com](http://global.ihs.com)

Information about API Publications, Programs and Services  
is available on the web at **[www.api.org](http://www.api.org)**

Product No. H10013