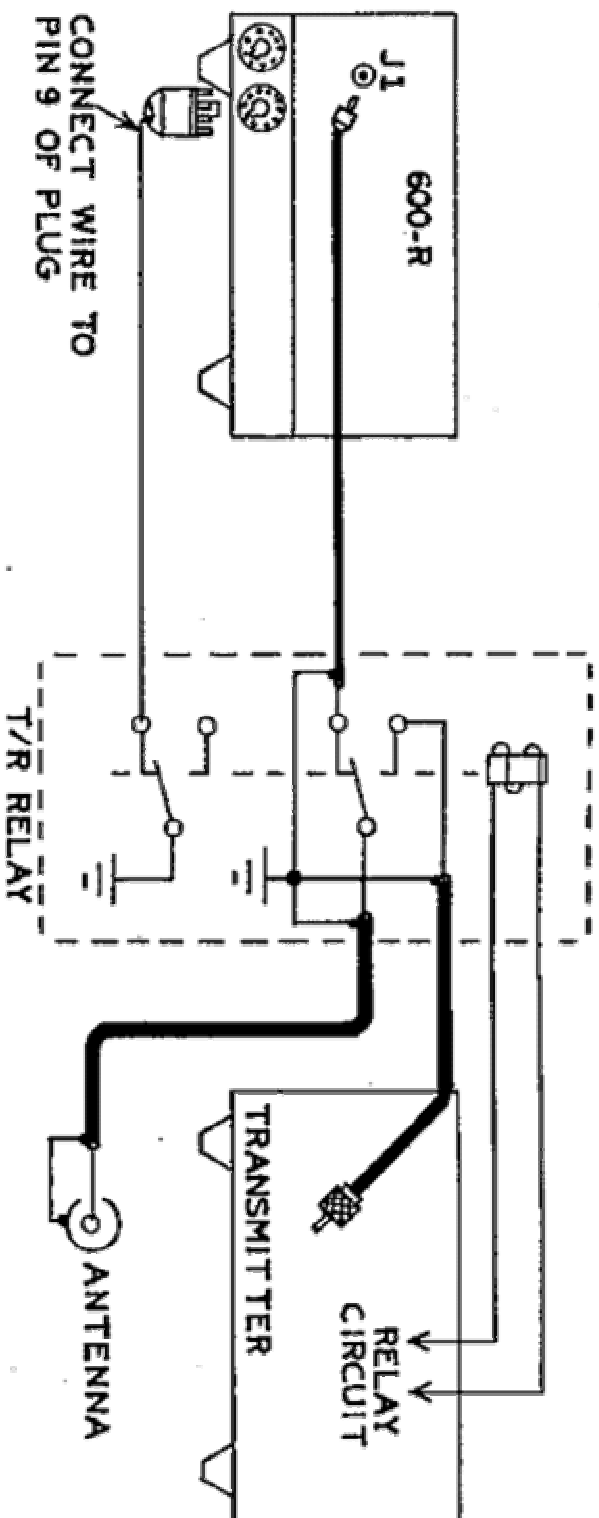


7. A low pitch tone will be heard in the receiver speaker, unless the oscillators are already zero beat. Place the receiver on its side, and locate the CAR. FREQ. ADJUST trimmers. Turn the NORMAL SIDEBAND trimmer slowly until exact zero-beat is heard.
8. Switch both units to OPPOSITE sideband. Adjust the OPPOSITE SIDEBAND trimmer for exact zero-beat.
9. The units are now fully synchronized.

Important: The carrier frequency trimmers on the transmitter should not be adjusted at this time. This has been factory adjusted during transmitter audio tests. Instructions for adjusting transmitter carrier frequencies are contained in the 600-T manual, as well as in the Swan Transceiver manuals. It is important to remember that if the 600-T carrier frequencies are ever re-adjusted for any reason, or if the Swan Transceiver carrier frequencies are changed, it will then be necessary to perform the Carrier Synchronizing procedure again on the 600-R.



NOTE: Most transmitters will have the Antenna Switching relay built-in, and will have auxiliary terminals for receiver muting. However, if your transmitter does not include relay switching, an external relay as illustrated, will be required. This may be a coaxial type antenna relay (which usually has auxiliary contacts), or any double pole-double throw relay suitable for R.F. Antenna switching. The relay coil must be energized by the transmitter T/R circuits, so its voltage rating will depend on the specific transmitter being used. Check transmitter schematic for information on this.

FIGURE 5. INTERCONNECTION CABLING FOR OTHER TRANSMITTERS/TRANSCEIVERS