



- () Install the circuit board on the chassis using 4-40 x 3/8" screws. Position the circuit board as shown. Be sure not to over-tighten the screws as the threads can be stripped from the nuts. CAUTION: Be sure the push-on nut indicated by the arrow in Pictorial 2-2 is not shorting to the foil that is outlined.

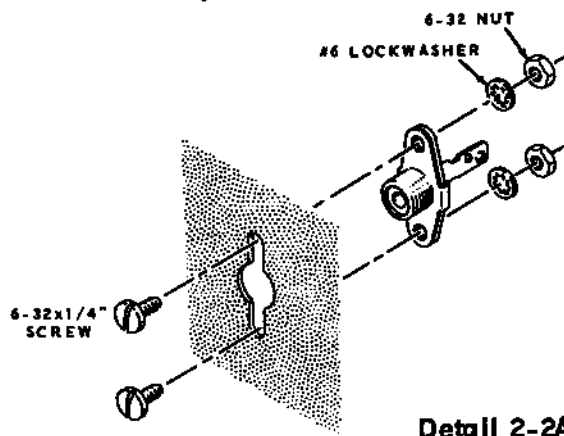
NOTE: Keep the plates of variable capacitors fully meshed (closed) at all times during the assembly of the kit, to prevent them from being damaged.

- () Locate variable capacitor #26-89 and bend lug 1 up as shown.
- () Mount this capacitor at the VFO Tune location using 4-40 x 5/16" screws, #4 lockwashers, and #8 flat washers. Position the capacitor back against the circuit board.
- () Mount variable capacitor #26-35 at the Final Tune location, with a #6 solder lug and a 3-lug terminal strip. Use 6-32 x 1" screws, #6 x 3/4" spacers, and #6 lockwashers.

Refer to Pictorial 2-2 (fold-out from Page 19) for the following steps.

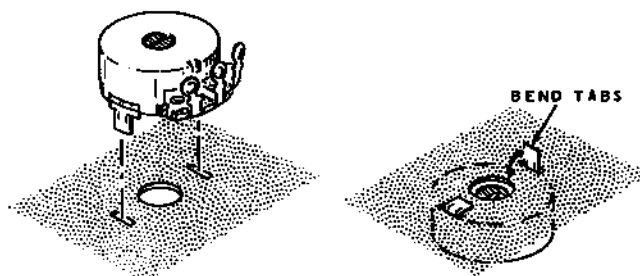
NOTE: When hardware is called for in a step, only the screw size will be given. For instance, if "6-32 x 1/4" hardware" is called for, it means that a 6-32 x 1/4" screw, one or more #6 lockwashers, and a 6-32 nut should be used. The Detail referred to in the step will show the proper number of lockwashers to use.

- () Refer to Detail 2-2A, and install a phono socket at the Receiver (RCVR) location. Use 6-32 x 1/4" hardware. Position the socket shown.



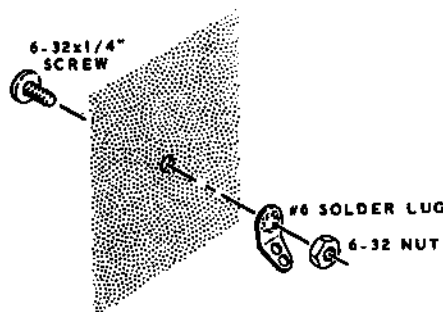
Detail 2-2A

- () In a like manner, install phono sockets at the Antenna (ANT), ALC, and Speaker (SPKR) locations. Use 6-32 x 1/4" hardware. Position each socket as shown.
- () Refer to Detail 2-2B, and install 100 K Ω tab-mount control #10-58 at the Tune Level location. Bend the tabs inward towards the center of the control.



Detail 2-2B

- () In a like manner, install 1 megohm tab-mount controls #10-127 at the VOX Sensitivity (VOX SENS) and VOX Delay locations. Bend the tabs as before.
- () Install 10 K Ω tab-mount controls (#10-57) at the S Meter Adjust and Bias Adjust locations.
- () Refer to Detail 2-2C, and install #6 solder lugs at locations BE and BG. Use 6-32 x 1/4" screws and 6-32 nuts.
- () Install rubber grommets in the square holes at locations BC and BD.



Detail 2-2C