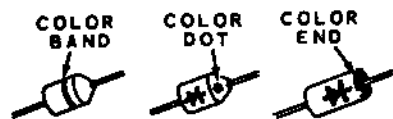




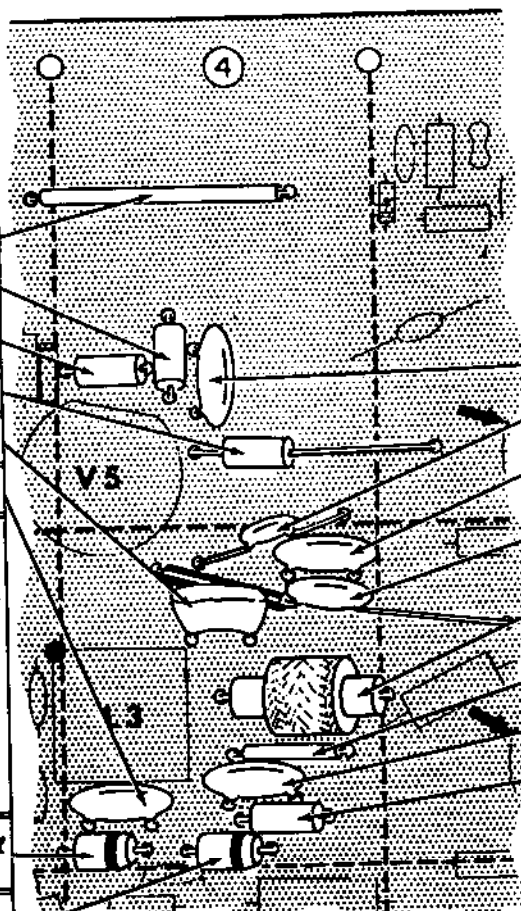
START

- () 2-1/2" jumper.
- () 100 K Ω (brown-black-yellow).
- () 47 K Ω (yellow-violet-orange).
- () 22 K Ω (red-red-orange).
- () 1300 pf mica.
- () .02 μ fd disc.

NOTE: When installing silicon diodes, the banded end should be placed as shown. The banded end is marked with a color end, a color dot, or a color band.



- () Silicon diode. Note position of banded end.
- () Silicon diode. Note position of banded end.
- () Solder all connections and cut off excess leads.



BOARD SECTIONS 4A AND 4B

CONTINUE

- () .005 μ fd disc.
- () 18 pf disc.
- () .02 μ fd disc.
- () .005 μ fd disc. Use sleeving on one lead.
- () 1 mh (#45-3) choke. Bend each lead toward the slot.
- () 1-1/2" jumper.
- () .02 μ fd disc.
- () 100 K Ω (brown-black-yellow).
- () Solder all connections and cut off the excess leads.

NOW PERFORM THE STEPS ON PICTORIAL 1-8.

PICTORIAL 1-7