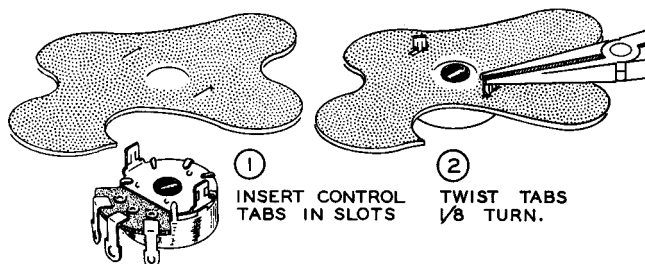


- (✓) C65. Install the Final Tune variable capacitor (#26-35), using 3/4" spacers, seven #6 lockwashers, a #6 solder lug, and 6-32 x 1" screws. Position solder lug AF as shown, and bend the capacitor lugs upward.
- (✓) Using the sandpaper supplied, lightly sand the foil around the outside edge of the circuit board to remove the lacquer coating and thus permit a good ground connection between the circuit board foil and the chassis. Also sand the mating surface of the chassis.
- (✓) Remove any mounds of solder along the outside edges of the circuit board.
- () Install the circuit board on the chassis, using 4-40 x 5/16" screws, eighteen #4 lockwashers, two #6 solder lugs, and 4-40 nuts. Position solder lugs AC and AD as shown. Be sure the REF-HOLE of the circuit board is positioned as shown.
- () Bend solder lug AD up, away from the circuit board.

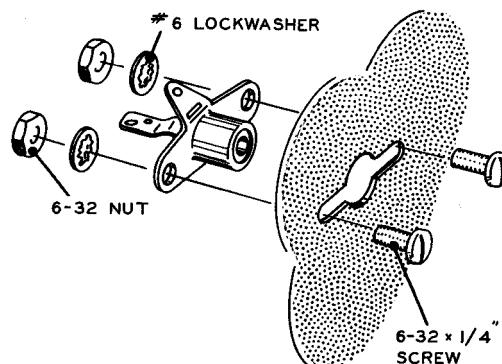
Refer to Pictorial 12 for the following steps.

- (✓) Referring to Detail 12A, install a 10 K Ω tab-mount control (#10-57) in the S Meter Adj location in the chassis divider. Twist the control mounting tabs 1/8 turn.
- (✓) Similarly install a 1 megohm tab-mount control (#10-127) at the VOX Delay location in the chassis divider.
- (✓) Install a 10 K Ω tab-mount control (#10-57) at the Final Bias location on the rear of the chassis.
- (✓) Install a 100 K Ω tab-mount control (#10-58) at the Tune Level location.
- (✓) Install a 1 megohm tab-mount control (#10-127) at the Mic Gain location.
- (✓) Referring to Detail 12B, install phono sockets at the Rcvr, Ant, Ext Relay, and Spkr locations. Use 6-32 x 1/4" screws, #6 lockwashers, and 6-32 nuts. Position these sockets as shown.

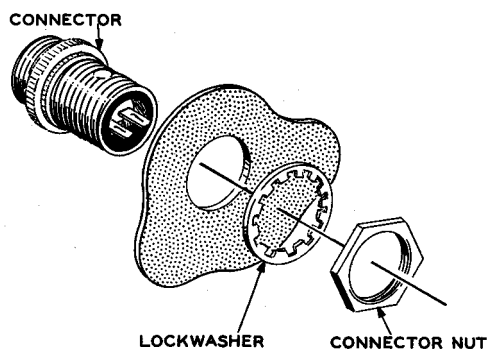
- (✓) Referring to Detail 12C, install the female microphone connector at the Mic location. Use the lockwasher and nut furnished on the connector. Position the connector lugs as shown in Pictorial 12. The lug numbers are molded into the connector.
- (✓) Install rubber grommets in holes AA and AB of the chassis divider.



Detail 12A



Detail 12B



Detail 12C