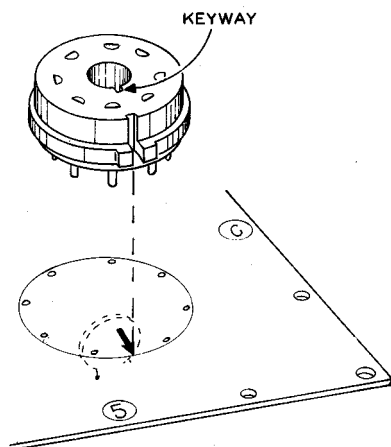


- (f) Referring to Detail 1D, install the 8-pin tube socket at the Calibrator location. Align the keyway of the socket with the arrow printed on the circuit board and solder all 8 pins.

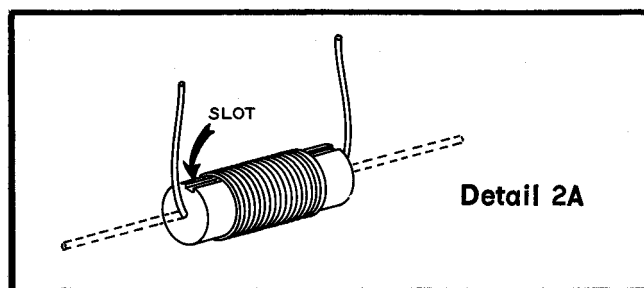


Detail 1D

NOTE: The circuit board can be supported on the chassis when installing and soldering components. This will keep the board level and make it easier to perform the following steps. Soldering to the circuit board foil will be easier if you solder and clip off excess leads after every six or eight components are installed. All resistors are 1/2 watt unless specified otherwise. Resistors will be called out by resistance value and color code only in the circuit board wiring steps.

NOTE: Use hookup wire for all jumper wires. Strip 1/2" insulation from each end of the wires.

Perform the steps on Pictorial 2.

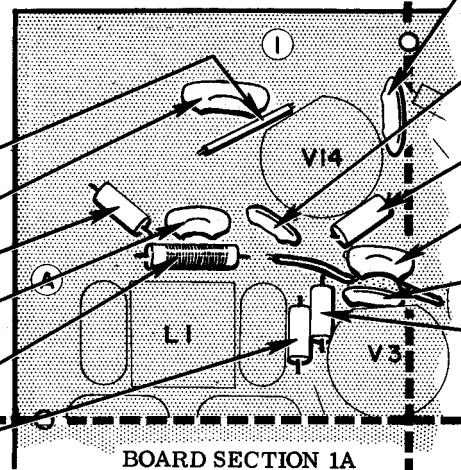


Detail 2A

CONTINUE

START

- (✓) 1-5/8" jumper.
- (✓) 1300 μf mica capacitor.
- (✓) 1000 Ω (brown-black-red).
- (✓) 310 μf mica capacitor.
- (✓) 15 μh (#45-51) choke. See Detail 2A for lead bending.
- (✓) 4700 Ω (yellow-violet-red).



BOARD SECTION 1A

PICTORIAL 2

- (✓) .02 μf disc capacitor.
- (✓) .005 μf disc capacitor. NOTE: Do not use the .005 μf 1.6 KV capacitors until they are called for specifically.
- (✓) 3300 Ω (orange-orange-red).
- (✓) 310 μf mica capacitor. Use sleeving.
- (✓) .1 μf disc capacitor.
- (✓) 220 Ω (red-red-brown).
- (✓) Check to see that all connections are soldered, and cut off excess leads.

FINISH

PERFORM THE STEPS ON PICTORIAL 3.